



Parallels Remote Application Server

Parallels Client for Windows User's Guide

v15

Parallels IP Holdings GmbH

Vordergasse 59

8200 Schaffhausen

Switzerland

Tel: + 41 52 632 0411

Fax: + 41 52 672 2010

www.parallels.com

Copyright © 1999-2016 Parallels IP Holdings GmbH and its affiliates. All rights reserved.

This product is protected by United States and international copyright laws. The product's underlying technology, patents, and trademarks are listed at <http://www.parallels.com/trademarks>.

Microsoft, Windows, Windows Server, Windows NT, Windows Vista, and MS-DOS are registered trademarks of Microsoft Corporation.

Apple, Mac, the Mac logo, Mac OS, iPad, iPhone, iPod touch, FaceTime HD camera and iSight are trademarks of Apple Inc., registered in the US and other countries.

Linux is a registered trademark of Linus Torvalds.

All other marks and names mentioned herein may be trademarks of their respective owners.

Contents

Getting Started	5
System Requirements	5
Installing Parallels Client Using an Invitation Email.....	5
Installing Parallels Client Manually.....	11
Manually Downloading and Installing Parallels Client.....	11
Connecting to Parallels Remote Application Server	13
Advanced Parallels Client Installation	17
Using Parallels Client for Windows.....	20
Adding a New Connection	20
Configuring a RAS Connection.....	22
Connection.....	23
Display	26
Printing.....	27
Scanning	29
Local Resources.....	30
Experience	31
Network	31
Authentication	32
Advanced Settings	32
Configuring an RDP Connection.....	33
Connection.....	34
Display	35
Local Resources.....	37
Programs	38
Experience	39
Network	39
Authentication	40
Advanced Settings	40

Contents

Configuring Global Options	42
Using a RAS Connection.....	44
Using an RDP Connection.....	46
Grouping RDP Connections Using Folders.....	47
Exporting and Importing Parallels Client Settings.....	47
Parallels Client Command Line Parameters	48
Index	50

CHAPTER 1

Getting Started

In This Chapter

System Requirements	5
Installing Parallels Client Using an Invitation Email	5
Installing Parallels Client Manually	11

System Requirements

Before installing Parallels Client on your Windows computer, please make sure that your system meets the following requirements:

- Windows XP SP3, Vista, Windows 7, Windows 8, Windows 10.
- The same hardware requirements as specified by Microsoft for the above versions of Windows.
- Some features (high color graphics, sound, etc.) will only be available if your Windows computer has the appropriate hardware installed and is properly configured.

Installing Parallels Client Using an Invitation Email

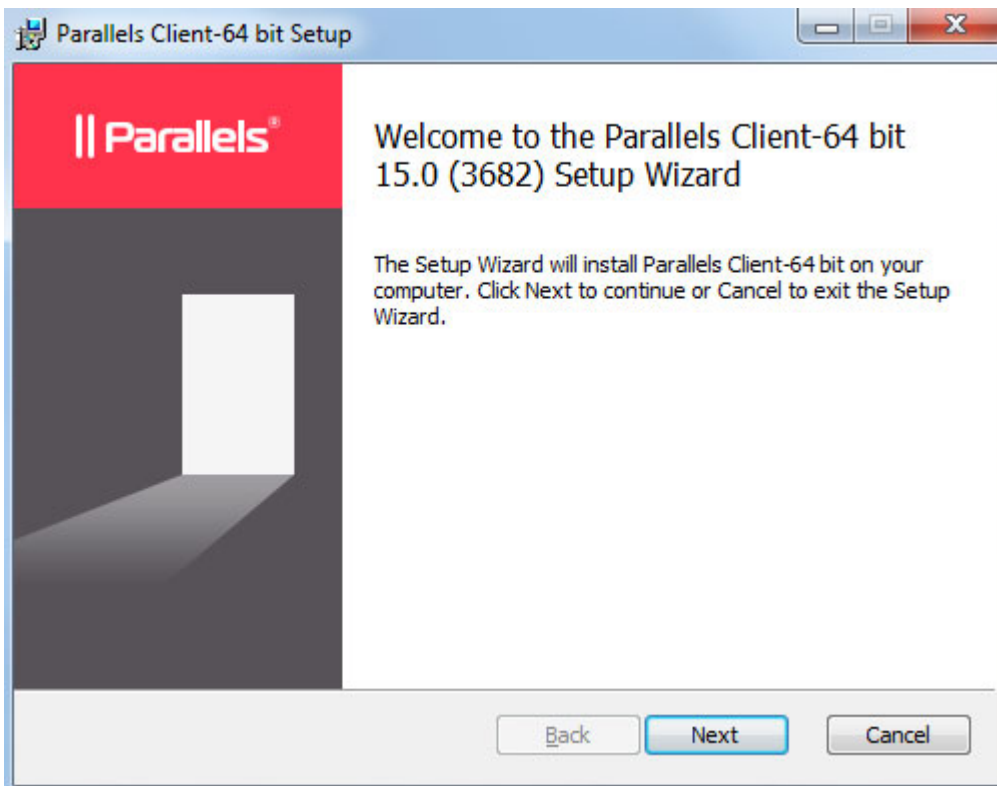
Your system administrator will send you an invitation email with the instructions on how to install Parallels Client for Windows and configure a Parallels Remote Application Server connection. The invitation email will contain the following information and action links:

- A message from your system administrator.
- A link to download Parallels Client for Windows (links to Parallels Client for other platforms may also be included if you are using other devices in addition to a Windows computer).
- A link to automatically configure Parallels Client on your computer, so you can connect to the Parallels Remote Application Server.
- Parallels Remote Application Server connection properties. You can use this information to manually create a Parallels Remote Application Server connection. The automatic configuration via the link (see above) is the preferred and the easiest method, but you can use this information to create a connection manually if needed for any reason.

To install Parallels Client for Windows using an invitation email:

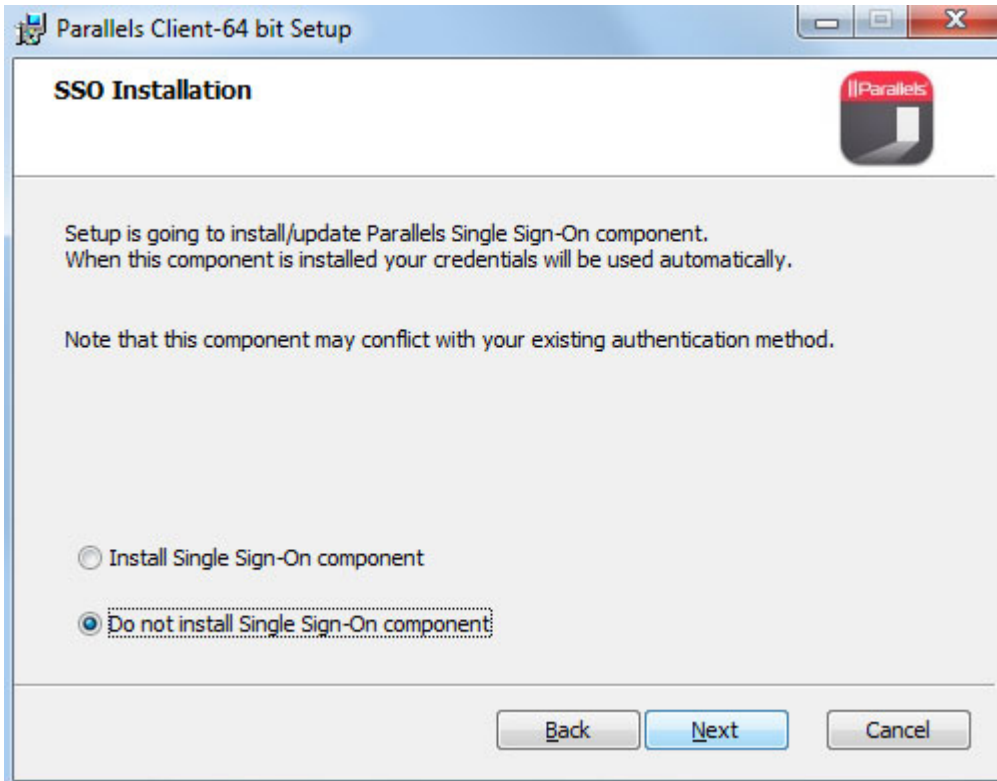
- 1 Make sure you are logged into your computer as a user with administrative privileges.

- 2 In the invitation email, click the Windows thumbnail to download Parallels Client for Windows installer.
- 3 When the download is complete, go to your download folder and run the `ClientDownloader.exe` file that you just downloaded. This is actually a small utility that detects the version of Windows that you are running and then downloads the appropriate Parallels Client for Windows installer.
- 4 When the download is complete, the Parallels Client installation wizard will automatically start.
- 5 On the **Welcome** page of the installation wizard, click **Next**.



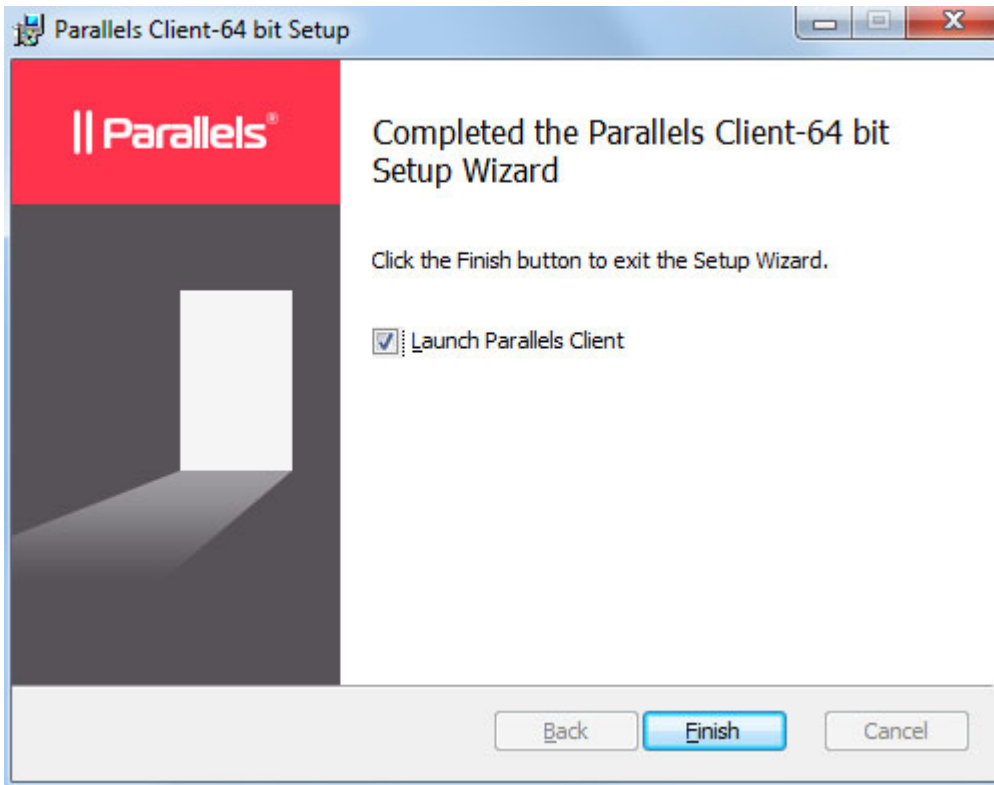
- 6 Accept the License Agreement and click **Next**.
- 7 Select the folder where you want to install Parallels Client and click **Next**.

- 8 The **SSO Installation** page will be skipped when installing Parallels Client on a Windows Server operating system. On all other supported versions of Windows, it will be shown. Use the page to specify whether you want to install the **Single Sign-On** component. The component will automatically use your credentials to connect to Parallels Remote Application Server. Please note that you will need to reboot your computer (or log off and then log on again) after the installation for the component to work.



- 9 Click **Next**.
- 10 On the **Ready to Install** page, click **Install**.

- 11 Once the installation is complete, you'll see the final wizard page.



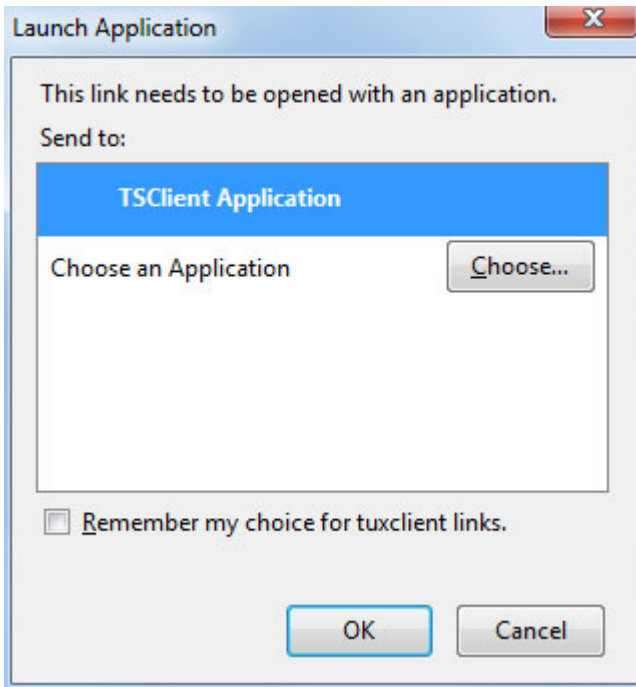
- 12 Clear the **Launch Parallels Client** option (we don't want to start the program just yet) and click **Finish** to close the wizard.

You now need to configure Parallels Client, so it can connect to Parallels Remote Application Server. The invitation email that you received from your system administrator includes a link that can accomplish this task automatically. Please follow the instructions below to configure Parallels Client.

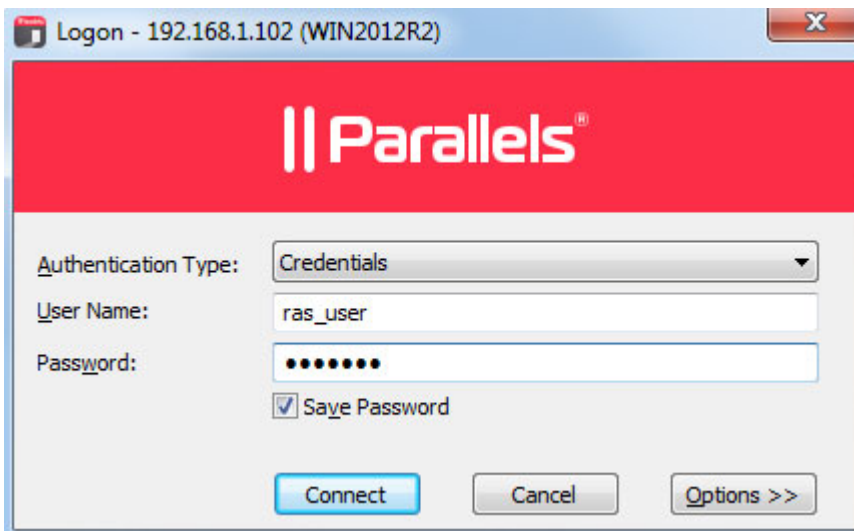
To configure Parallels Client for Windows:

- 1 In the invitation email, find the **Configure** section and click the **Click Here to auto configure the downloaded client** link.

- 2 The link will open in a web browser after which you should see the following dialog:



- 3 Make sure the **TSClient Application** item is selected and click **OK**. This will configure Parallels Client for Windows and then will display the **Logon** screen.



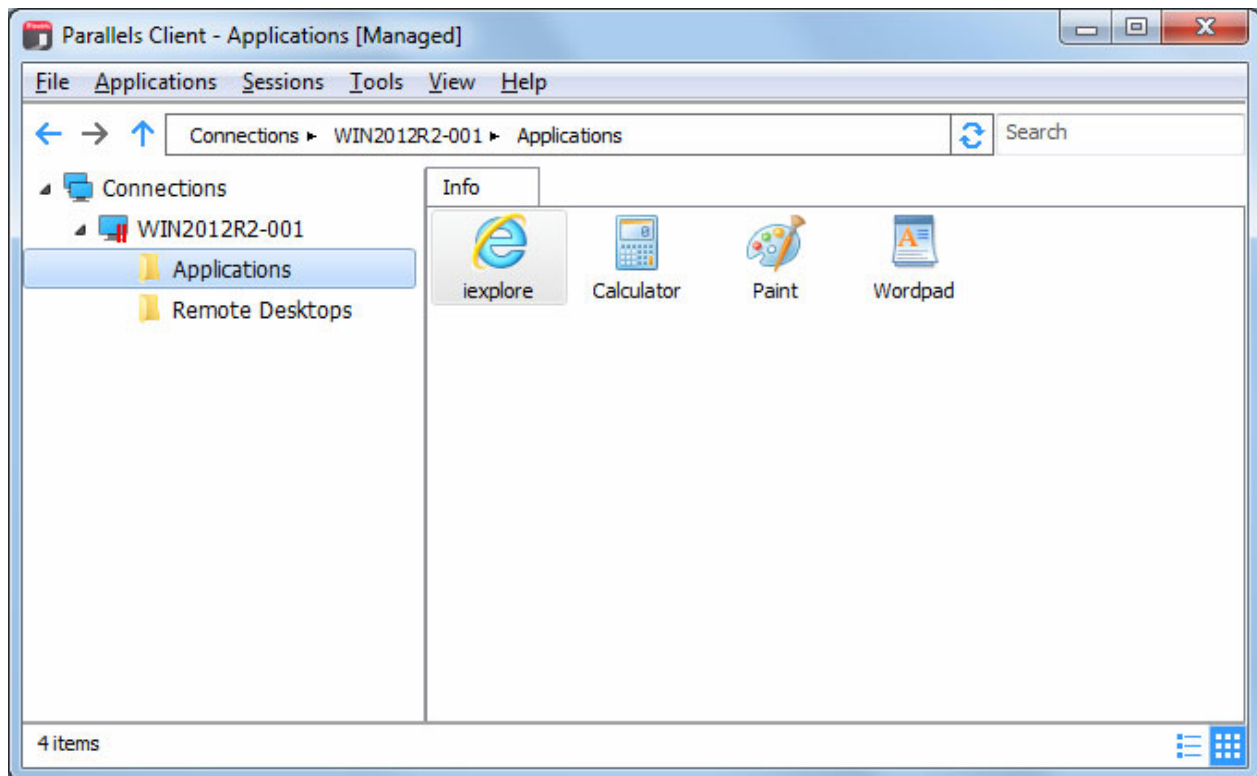
- 4 Select the **Authentication Type** from the following:
- **Credentials.** Select this option to connect to Parallels Remote Application Server by supplying your credentials, such as your domain user name and password.
 - **Smart card.** Select this option to connect to Parallels Remote Application Server using a smart card.

- **Single Sign-On.** This option will be included in the list only if the Single Sign-On module is installed during Parallels Client installation. Select this option to use local system credentials to connect to the remote server.

Note for Administrators: The allowed authentication type(s) must be specified in the RAS Console in **Connection / Authentication**.

- 5 Depending on the authentication type selected, type your user name and password or insert a smart card into a reader. If using a smart card, enter a PIN when prompted.
- 6 Click **Connect**.

You should now see the main **Parallels Client** window. The left pane of the window displays the connection that was automatically configured for you. The right pane displays published resources that you can use.



Double-click a resource to open it. The resource will open in a separate window on your local computer as if it was a local application or a document (or a remote desktop if one is available as a published resource).

Installing Parallels Client Manually

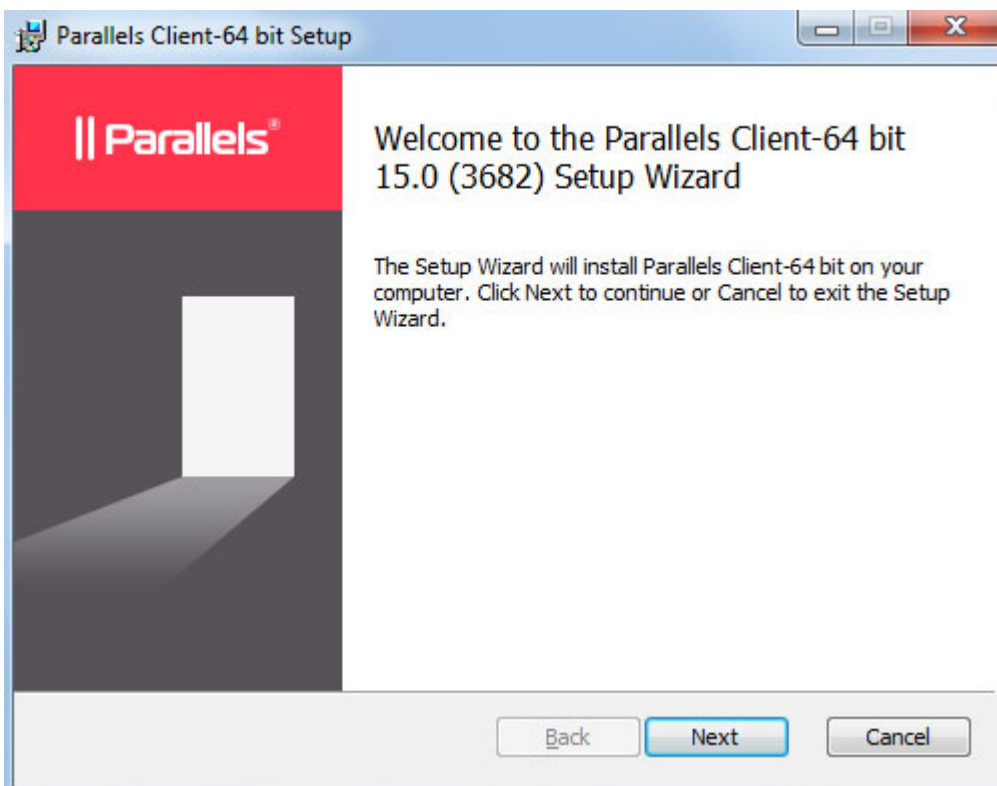
Manually Downloading and Installing Parallels Client

The preferred method of downloading and installing Parallels Client for Windows is via an invitation email as described in the previous section. If you would like to download the installer, so you can run it manually on a different computer or for any other reason, please use the following URLs:

- 32 bit version: <http://download.parallels.com/ras/v15/RASClient.msi>
- 64 bit version: <http://download.parallels.com/ras/v15/RASClient-x64.msi>

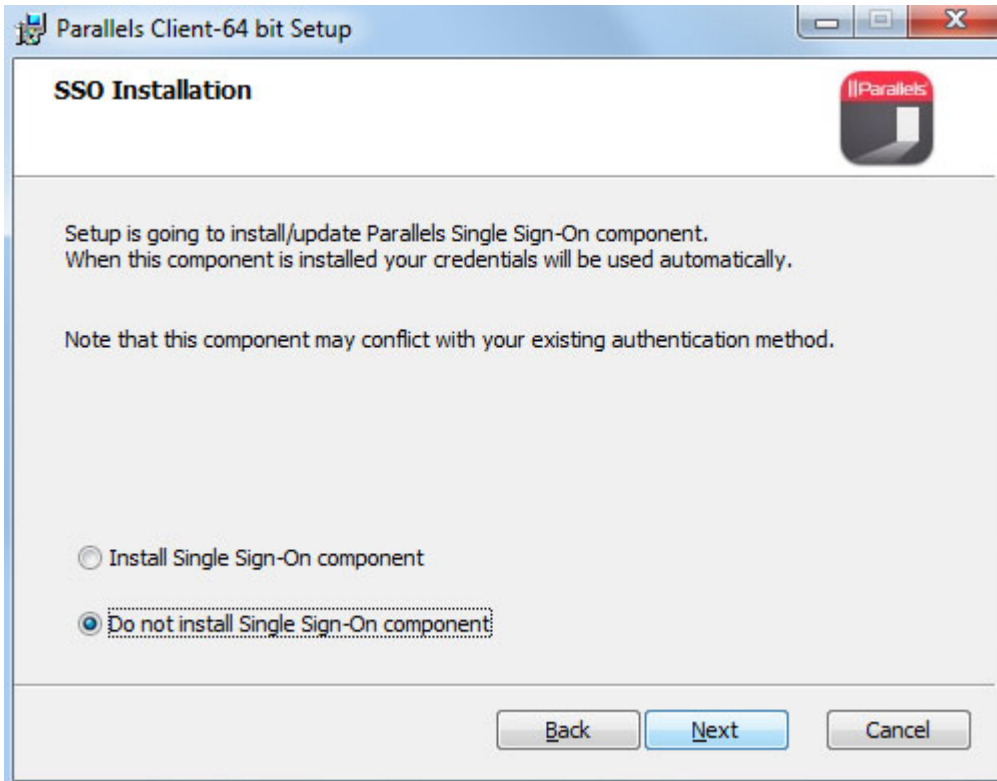
To install Parallels Client for Windows:

- 1 Make sure you are logged into your computer as a user with administrative privileges.
- 2 Run the Parallels Client installer that you've downloaded from the Parallels website.
- 3 On the **Welcome** page of the installation wizard, click **Next**.



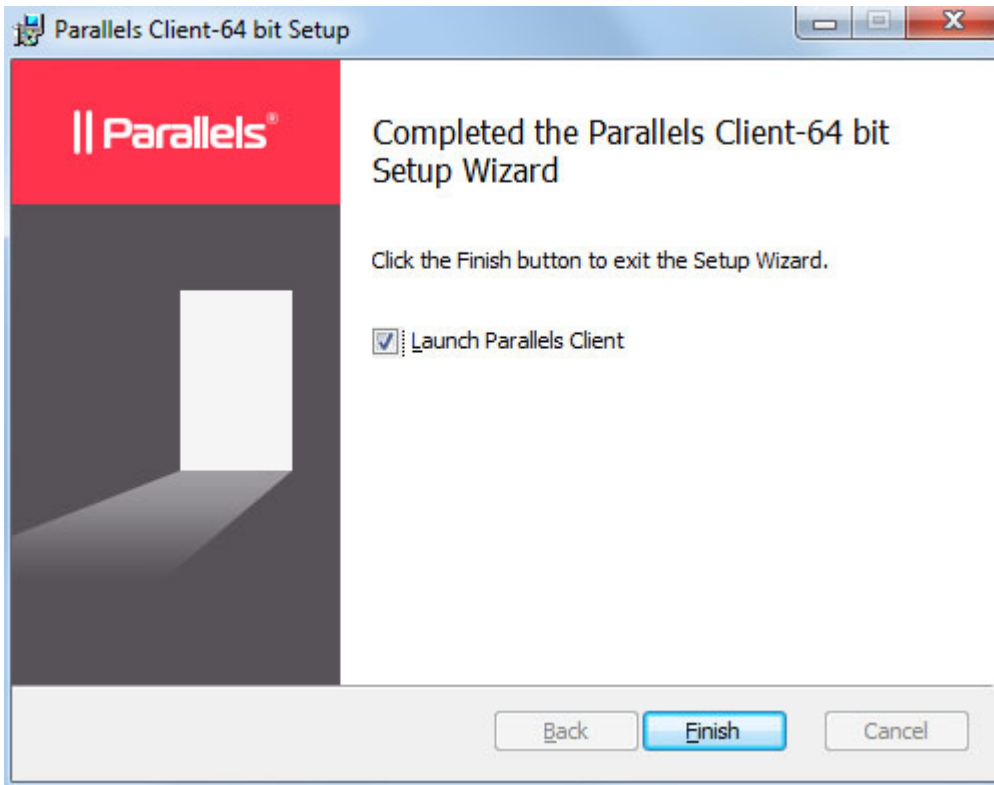
- 4 Accept the License Agreement and click **Next**.
- 5 Select the folder where you want to install Parallels Client and click **Next**.

- The **SSO Installation** page will be skipped when installing Parallels Client on a Windows Server operating system. On all other supported versions of Windows, it will be shown. Use the page to specify whether you want to install the **Single Sign-On** component. The component will automatically use your credentials to connect to Parallels Remote Application Server. Please note that you will need to reboot your computer (or log off and then log on again) after the installation for the component to work.



- Click **Next**.
- On the **Ready to Install** page, click **Install**.

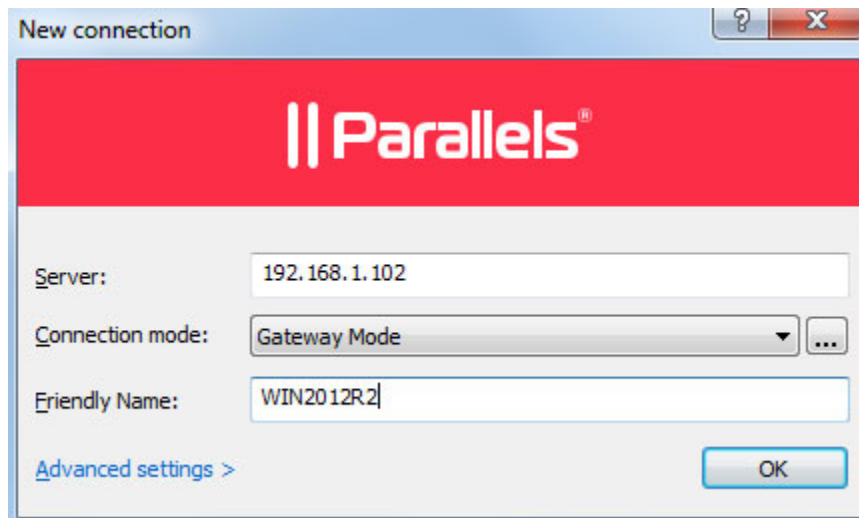
- 9 When the installation is complete, you'll see the final wizard page.



- 10 Click **Finish** to close the wizard and start Parallels Client for Windows.

Connecting to Parallels Remote Application Server

After you manually install Parallels Client and run it for the first time, you'll be asked if you would like to configure a new connection. Click **Yes**. This will open the **New connection** dialog.



Your system administrator should give you the connection information that must be specified in this dialog. If you received an invitation email from your administrator, you can find this information at the bottom of the message. The information will look similar to the following:

To manually configure the RAS Connection, use the following settings:

```
Server: 192.168.1.102
Port: 443
Connection Mode: Gateway Mode
```

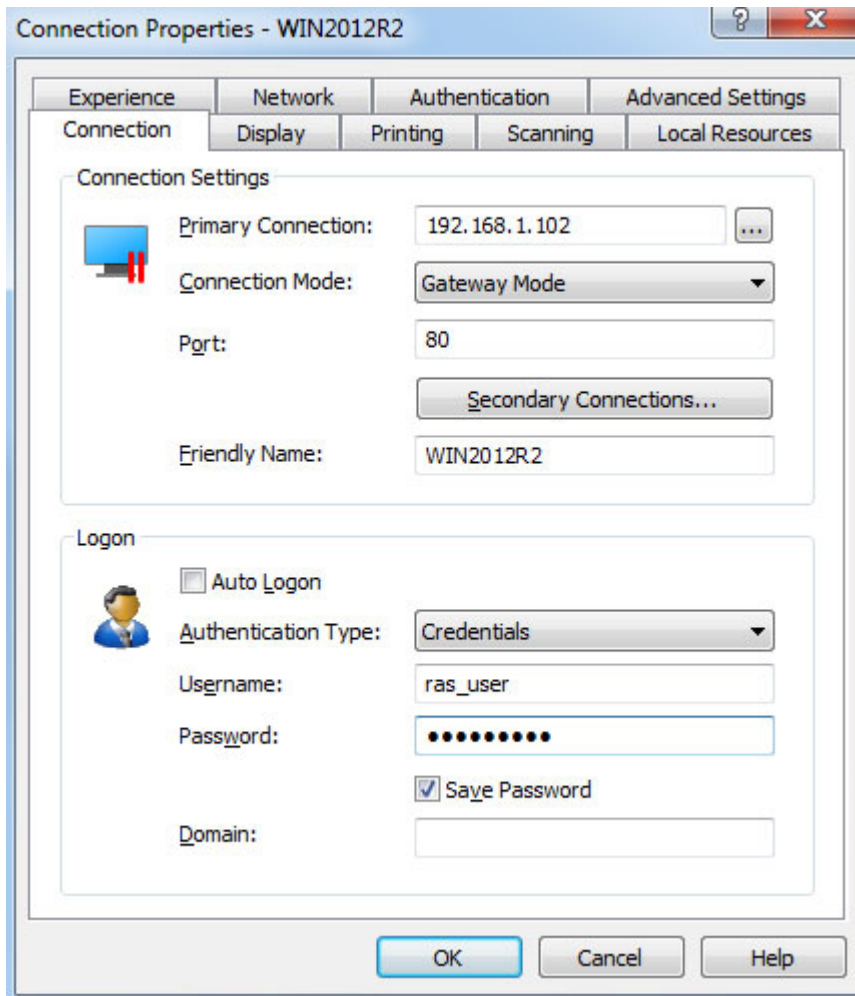
To specify the connection properties:

- 1** In the **Server** field, enter the Parallels Remote Application Server IP address or hostname (this should be the server where the RAS Secure Client Gateway resides).
- 2** In the **Connection mode** field, select one of the following options (please note that as a user, you don't have a choice here and must use the mode that your system administrator has asked you to use):
 - **Gateway Mode.** Parallels Client connects to the RAS Secure Client Gateway and the session connection is tunneled through the first available connection. This mode is ideal for servers that are only reachable via the gateway and do not require a high level of security.
 - **Gateway SSL Mode.** Same as the gateway mode above, but uses encryption to secure the data.
 - **Direct Mode.** Parallels Client first connects to the RAS Secure Client Gateway for the best available terminal server and then connects directly to that server. This is best used when the Parallels Client and the terminal server reside on the same network.
 - **Direct SSL Mode.** Same as the direct mode above, but uses encryption to secure the data.

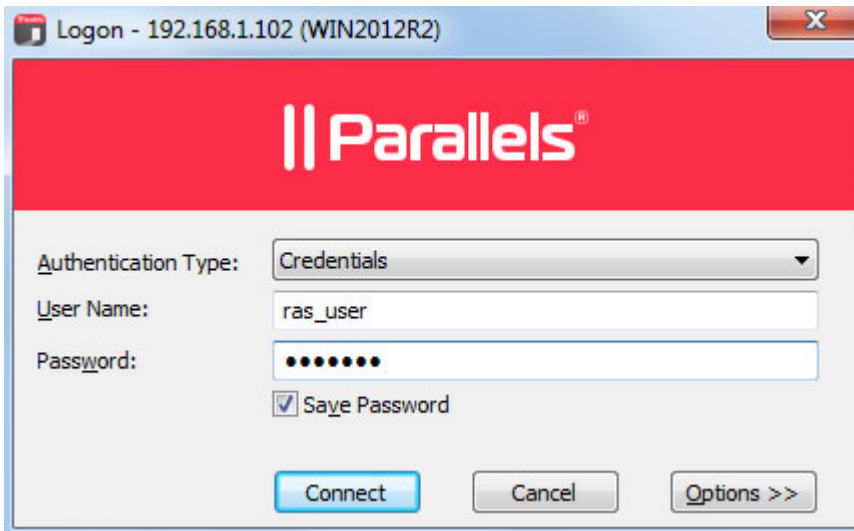
If your administrator enabled the **Broadcast RAS Secure Client Gateway Address** option for the gateway, you can click the [...] button and should see the available Parallels Remote Application Server connection in your area, which you can select. If no connections are displayed, then you need to enter the **Server** information manually, as described above.

- 3** In the **Friendly name** field, choose and type a friendly name for this connection.
- 4** If your system administrator told you to specify the port number, do the following:
 - a** Click the **Advanced settings** link. The **Connection Properties** dialog opens (see the screenshot below).
 - b** Specify the port number in the **Port** field.

- c While here, you can review and modify other properties if you wish. More on these later in this guide.



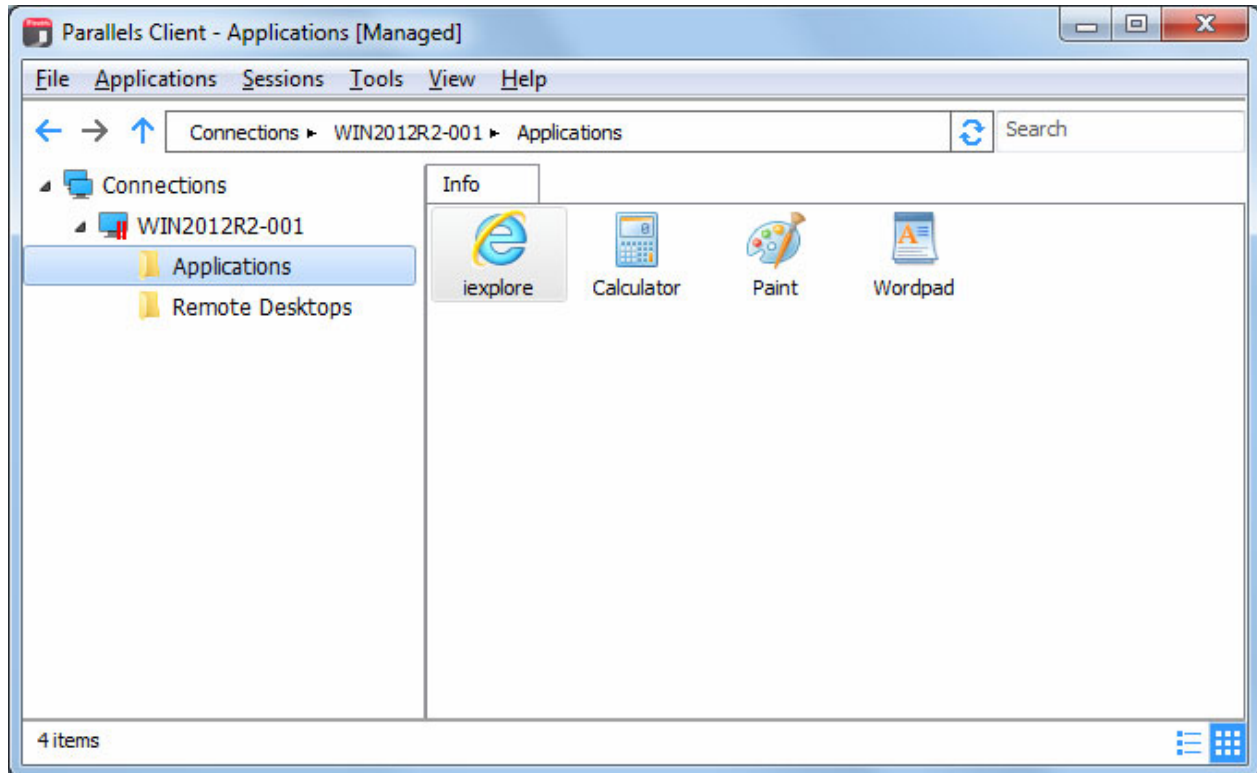
- 5 Click **OK**. The **Logon** dialog opens.



- 6 In the **Authentication type** drop-down list, select the desired method of authentication:
- **Credentials**. Select this option and then enter your username and password. You will be authenticated on the remote server using the specified credentials.
 - **Smart Card**. Select this option to authenticate using a smart card. When connecting to the remote server, insert a smart card into the card reader and then enter a PIN when prompted.
 - **Single Sign-On**. This option will be included in the list only if the Single Sign-On module is installed during Parallels Client installation. Select this option to use local system credentials to connect to the remote server

Note for Administrators: The allowed authentication type(s) must be specified in the RAS Console in Connection / Authentication.

- Click **Connect**. If the connection is successful, you'll see the main **Parallels Client** window. The left pane of the window displays your connection(s) and published folders. The right pane displays published resources that you can use.



Advanced Parallels Client Installation

Note: This section is intended for IT Administrators. If you are not an IT administrator in your organization, you may skip it.

The Parallels Client for Windows installer uses the MSI format. This enables you to deploy it remotely using Group Policies or any other deployment tool that can work with MSI installers.

There are two ways to modify the client installation settings:

- Modify the original file using Orca.exe.
- Run the installer from the command line: `msiexec.exe /i RASClient.msi` (or `RASClient-x64.msi` if using a 64 bit version)

Silent Install

To perform a silent install, run the following command:

```
msiexec.exe /qn /i RASClient.msi
```

In the command above, specify `RASClient-x64.msi` if using a 64 bit version of Parallels Client for Windows.

General Settings

When running an installation command specified above, you can pass the following properties to `msiexec.exe` using the `PROPERTY=VALUE` notation:

DEFSETTINGS: To use when Parallels Client installer reads `2xsetting.2xc` (the file containing all settings to be used by the client) as default settings.

DEFSETXML: To use when XML settings are entered manually.

OVERRIDEUSERSETTINGS: To override the user settings with client MSI settings.

- 0 – Client settings are not overridden
- 1 – Client settings are overridden with the new settings of the Client MSI setup.

DISABLEOPTIONS: To disable the **Options** button and hide the options to configure the client settings. This option can be applied to users without administrative rights.

- 0 – Options are enabled
- 1 – Options are disabled

DISABLEOPTIONSADMIN: To disable the **Options** button and hide the options to configure the client settings. This option can be applied to users with administrative rights.

DISABLESAVEPASSWORDADMIN: To disable the clients from saving the password even if they have administrative rights.

- 0 – Option to save password is enabled
- 1 – Option to save Password is disabled

DISABLESAVEPASSWORD: To disable the clients from saving the password. This option is ignored with users with administrative rights.

- 0 – Option to save password is enabled
- 1 – Option to save Password is disabled

TUXGINA: Exclude/Include SSO during a silent installation

- 0 – Install SSO
- 1 – Exclude SSO
- 2 – Prompt during installation [Default]

TUXGINASRV: Install SSO on both Client and Server

- 0 – Install SSO only on the Client

- 1 – Install SSO on both Client and Server

Using Active Directory

There are two different ways that you can deploy an application through Active Directory. You can either publish the application or you can assign the application.

You can publish applications to users only, but you can assign applications to either users or computers. The applications are deployed in different ways, depending on which method you decide to use.

Parallels recommends that administrators assign the applications to COMPUTERS. The main reason is that the application is actually installed the next time the computer reboots.

When assigning to users, the application is not installed until the user actually clicks on the icons created for the application.

To assign an application to certain computers, simply do the following in Active Directory:

- 1 Open the Group Policy Editor.
- 2 To assign an application to a computer, navigate through the group policy console to Computer Configuration / Software Settings / Software Installation. Right-click the Software Installation container and click **New > Package** in the context menu. Select the appropriate MSI file and click **Open**. You are now asked whether you want to publish or assign the application. Select **Assign** and click **OK**.

Please note that when doing a silent installation, the MSI can be deployed using the following syntax (for the 64 bit version, use `RASClient-x64.msi`):

```
msiexec /qn /i RASClient.msi
```

The following sample command installs Parallels Client using the `DISABLESAVEPASSWORD=0` option (enable the ability to save the password) while skipping the SSO installation:

```
msiexec /qn /i 2XClient.msi DISABLESAVEPASSWORD=0 TUXGINA=1
```

Using Parallels Client for Windows

In This Chapter

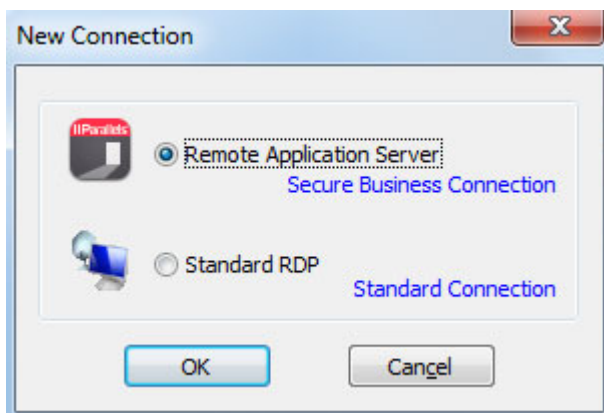
Adding a New Connection.....	20
Configuring a RAS Connection	22
Configuring an RDP Connection	33
Configuring Global Options.....	42
Using a RAS Connection	44
Using an RDP Connection.....	46
Exporting and Importing Parallels Client Settings	47
Parallels Client Command Line Parameters	48

Adding a New Connection

Parallels Client for Windows allows you to have more than one connection, so you could easily connect to different servers or using different connection properties, etc.

To add a connection:

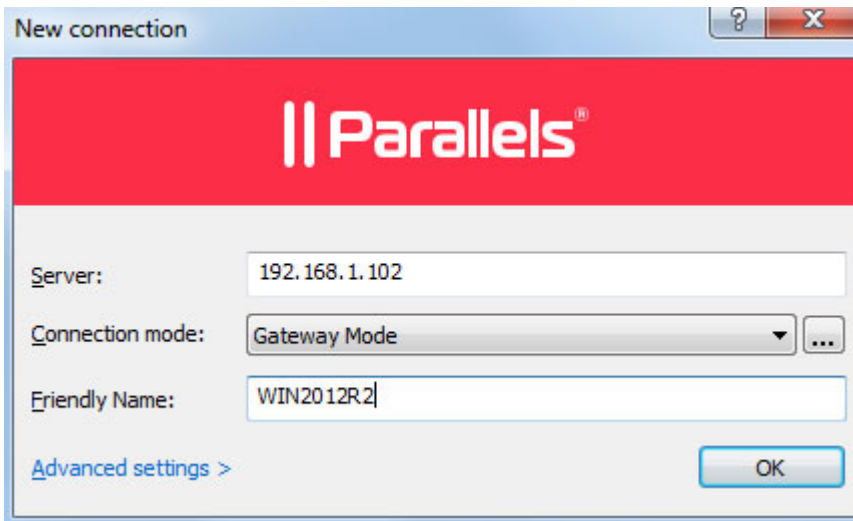
- 1 Open Parallels Client by clicking **Start > All Programs > Parallels > Client > Client** (or double-click the **Parallels Client** icon on your desktop).
- 2 In the main Parallels Client window, click the **File > New Connection** menu item. The **New Connection** dialog opens.



- 3 Specify a connection type you'd like to create:
 - **Remote Application Server.** Create a Parallels Remote Application Server connection.

- **Standard RDP.** Create a standard Remote Desktop connection. This option completely bypasses Parallels Remote Application Server and will establish an RDP connection with any computer on your network that accepts Remote Desktop connections and to which you are allowed to connect.

4 Click **OK**. The **New connection dialog** opens.



When creating a Remote Application Server connection, your system administrator should give you the connection information that must be specified in this dialog. If you received an invitation email from your administrator, you can find this information at the bottom of the message. The information will look similar to the following:

To manually configure the RAS Connection, use the following settings:

```
Server: 192.168.1.102
Port: 443
Connection Mode: Gateway Mode
```

When creating a Standard RDP connection, you need to know the IP address or hostname of the remote computer you want to connect to.

- 5 In the **Server** field, enter the Parallels Remote Application Server IP address or hostname (this should be the server where the RAS Secure Client Gateway resides). If creating a Standard RDP connection, specify the remote computer IP address or hostname.
- 6 The **Connection mode** drop-down list is enabled only when creating a Remote Application Server connection. Select one of the following options (please note that as a user, you don't have a choice here and must use the mode that your system administrator has asked you to use):
 - **Gateway Mode.** Parallels Client connects to the RAS Secure Client Gateway and the session connection is tunneled through the first available connection. This mode is ideal for servers that are only reachable via the gateway and do not require a high level of security.
 - **Gateway SSL Mode.** Same as the gateway mode above, but uses encryption to secure the data.

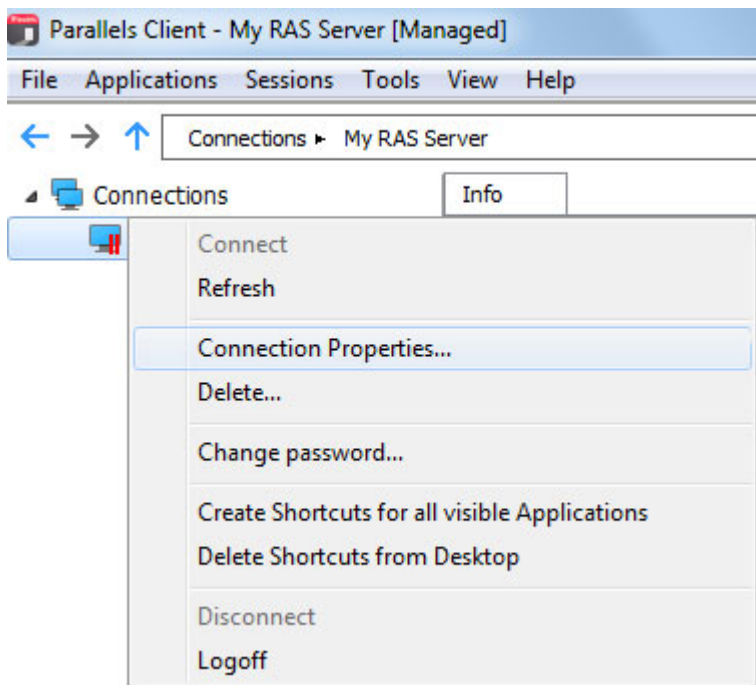
- **Direct Mode.** Parallels Client first connects to the RAS Secure Client Gateway for the best available terminal server and then connects directly to that server. This is best used when the Parallels Client and the terminal server reside on the same network.
- **Direct SSL Mode.** Same as the direct mode above, but uses encryption to secure the data.

If your administrator enabled the **Broadcast RAS Secure Client Gateway Address** option for the gateway, you can click the [...] button and should see the available Parallels Remote Application Server connection in your area, which you can select. If the list is empty, you need to enter the **Server** information manually, as described above.

- 7 In the **Friendly name** field, choose and type a friendly name for this connection.
- 8 The **Advanced settings** link opens the **Connection Properties** dialog where you can specify additional connection properties. For more information, please see **Configuring a RAS Connection** (p. 22) or **Configuring an RDP Connection** (p. 33).
- 9 Click **OK** to create a connection.

Configuring a RAS Connection

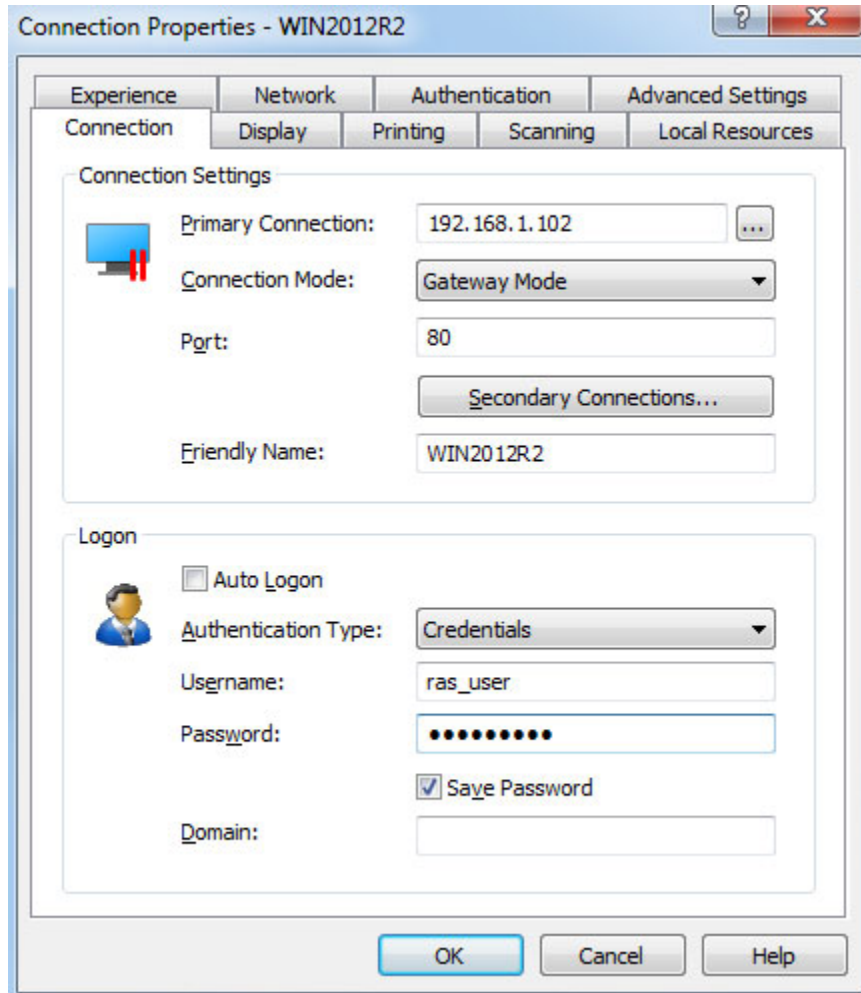
To view and modify the properties of an existing Remote Application Server connection, right-click it in the main Parallels Client window and then click **Connection Properties** in the context menu.



This will open the **Connection Properties** dialog. Properties are grouped in the dialog by functionality using tab pages. The following subsections describe each tab page in detail.

Connection

The **Connection** tab page allows you specify connection properties and logon information.



Configuring the Primary Connection

On the **Connection** tab page, you can define a *primary connection* and one or more *secondary connections*.

The primary connection is what Parallels Client will use first to connect to the specified server. This should be the server where the primary RAS Secure Client Gateway is running.

To specify the primary connection information:

- 1 In the **Primary Connection** field, specify the server name or IP address. You can click the [...] button and select a server from the list. If the server is not listed, it means that the system administrator disabled this functionality on the server side. In such a case, specify the server by typing its name or IP address in the **Primary Connection** field.

Note for Administrators: The **Broadcast RAS Secure Client Gateway Address** option must be enabled on the server side for the [...] button to display the server.

- 2 In the **Connection Mode** drop-down list, select one of the following options (once again, as a user, ask your system administrator which mode you should select):
 - **Gateway Mode.** Parallels Client connects to the RAS Secure Client Gateway and the session connection is tunneled through the first available connection. This mode is ideal for servers which are only reachable via the gateway and do not require a high level of security.
 - **Gateway SSL Mode.** Same as the gateway mode above, but uses encryption to secure the data.
 - **Direct Mode.** Parallels Client first connects to the RAS Secure Client Gateway for the best available terminal server and then connects directly to that particular server. This is best used when the Parallels Client and the terminal server are on the same network.
 - **Direct SSL Mode.** Same as the direct mode above, but uses encryption to secure the data.
- 3 In the **Port** field, specify the port on which the gateway listens for incoming connections. If the default value has been modified on the server side, you have to replace the default value here as well. Otherwise, leave the default value intact.
- 4 In the **Friendly Name** field, choose and type a name of your choice, so you could easily identify the server in Parallels Client later.

Configuring a Secondary Connection

If the Remote Application Server that you are connecting to has more than one RAS Secure Client Gateway, you can define a secondary connection, which will be used as a backup connection in case the primary gateway connection fails.

To add a secondary connection:

- 1 Click the **Secondary Connections** button.
- 2 In the **Secondary Connections** dialog, click the **Add** button and specify a server name or IP address. This should be a server hosting a secondary RAS Secure Client Gateway (the primary gateway is used by the primary connection). You can click the [...] button and select a server from the list. If none are available (or if the desired server is not in the list), type the server info in the field provided.
- 3 Select the connection mode and modify the port number if necessary. Click **OK**.
- 4 Back in the **Secondary Connections** dialog, if you have multiple secondary connections, you can move them up or down in the list. If the primary connection cannot be established, Parallels Client will use secondary connections in the order listed.
- 5 Click **OK**.

Configuring the Logon Information

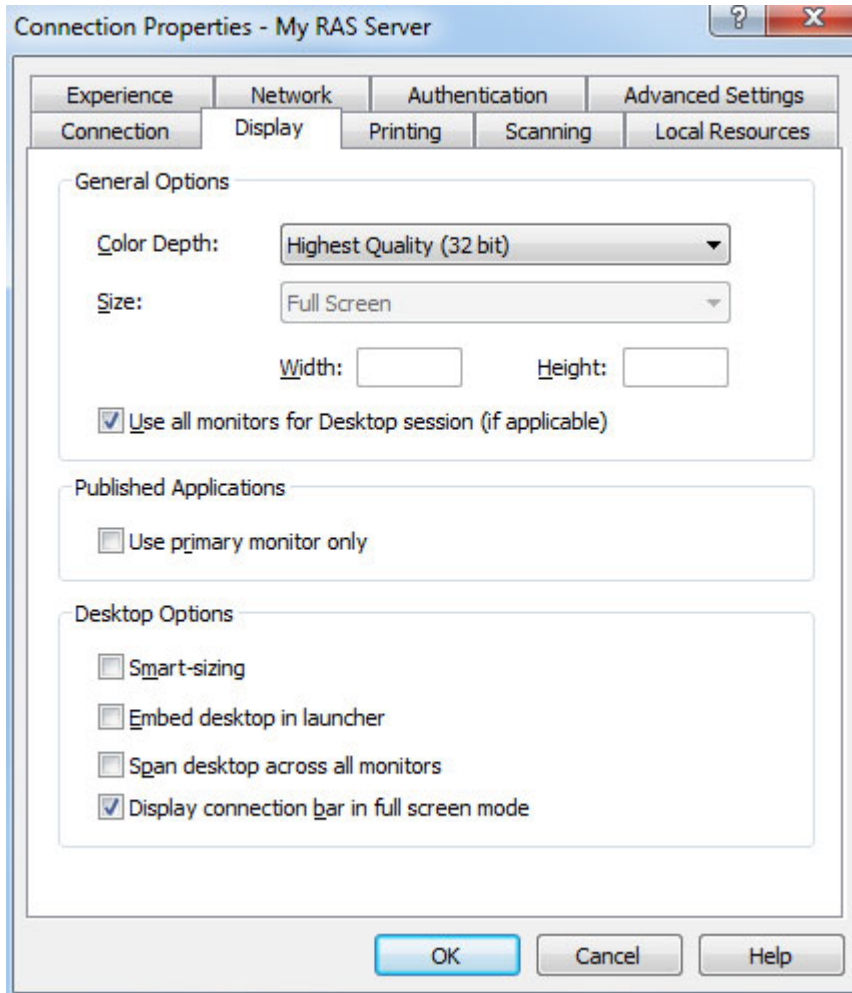
In the **Logon** section, specify the following properties:

- 1** Select the **Auto Logon** option to enable Parallels Client to connect automatically without displaying the **Logon** dialog every time you connect to a remote server.
- 2** In the **Authentication type** drop-down list, select the desired method of authentication:
 - **Credentials.** Select this option and then enter the username, password, and domain information. You will be authenticated on the remote server using the specified credentials.
 - **Smart Card.** Select this option to authenticate using a smart card. When connecting to the remote server, insert a smart card into the card reader and then enter a PIN when prompted.
 - **Single Sign-On.** This option will be included in the list only if the Single Sign-On module is installed during Parallels Client installation. Select this option to use local system credentials to connect to the remote server.

Note for Administrators: The allowed authentication type(s) must be specified in the RAS Console in **Connection / Authentication**.

Display

The **Display** tab page allows you to configure display options.



In the **General Options** section, specify the general display properties.

Select the **Use primary monitor only** option to start published applications on your primary monitor only. Other monitors connected to your system will not be used.

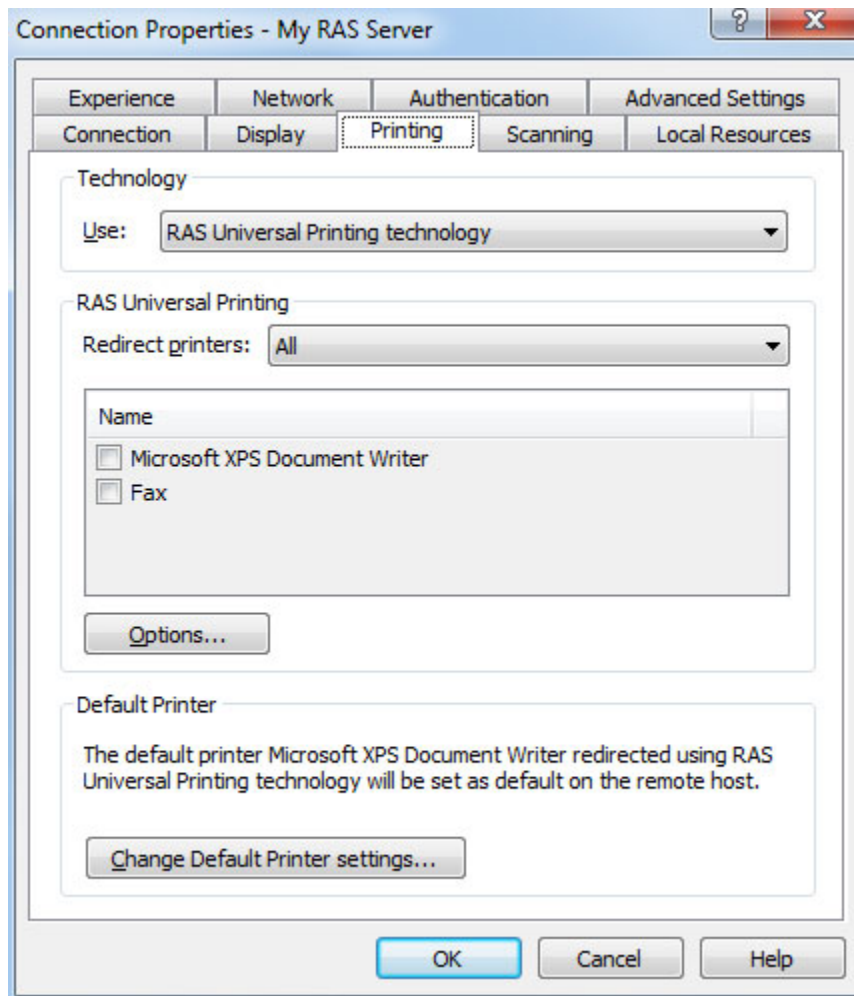
Specify the **Desktop Options** as follows:

- **Smart-sizing.** Desktop smart sizing will scale a remote desktop to fit the connection window.
- **Embed desktop in launcher.** Enable this option to access a published desktop inside Parallels Client.
- **Span desktop across all monitors.** Enable this option to span published desktops across all connected monitors.

- **Display connection bar in full screen mode.** Enable this option to show the connection bar when connecting in full screen mode.

Printing

The **Printing** tab page allows you to configure printing options.



In the **Technology** drop-down list, select the technology to use when redirecting printers to a remote computer:

- **None.** No printer redirection will be used.
- **RAS Universal Printing technology.** Select this option if you want to use RAS Universal Printing technology.
- **Microsoft Basic Printing Redirection technology.** Select this option if you want to use Microsoft Basic printing technology.
- **RAS Universal Printing and Microsoft Basic redirection technologies.** Select this option to use both Parallels RAS and Microsoft technologies.

RAS Universal Printing

If you selected **RAS Universal Printing technology**, select printers to redirect in the **Redirect Printers** drop-down list:

- **All.** All printers on the client side will be redirected.
- **Default only.** Only the Windows default printer will be redirected.
- **Specific only.** Select the printers to redirect from the provided list. The list becomes enabled only if you select this option.

Additional options can be configured by clicking the **Options** button, which will open the **RAS Universal Printing Options** dialog.

In this dialog, you can select the data format:

- **Portable Document Format (PDF).** Adobe PDF.
- **Enhanced Meta File (EMF).** Use vector format and embedded fonts.
- **Bitmap (BMP).** Bitmap images.

You can also choose to configure printer preferences before printing:

- **Never show the preference window.** The printer preferences window will never be shown before printing.
- **Show Preference window for all printers.** The printer preferences window will be shown for all printers before printing.
- **Show the preferences window only for the following printers.** The printer preferences window will be shown for all selected printers in the list box which becomes enabled when this setting is selected.

Default printer settings

To configure default printer settings, click the **Change Default Printer settings** button.

The default printer list shows printers that can be redirected by the client to the remote computer. The list also includes the printing technology that the available printers will use. The technology reflects the setting selected in the **Technology** section. For example, if the technology was set to **RAS Universal Printing technology**, only the printers using RAS Universal Printing will be listed.

To disable the default printer, select **<none>**. To redirect the default local printer on the client side to the remote computer, select **<defaultlocalprinter>**. When **<custom printer>** is selected, you can specify a custom printer which might be installed on the remote computer. The first printer that matches the printer name inserted in the custom text box, will be set as the default printer on the remote computer.

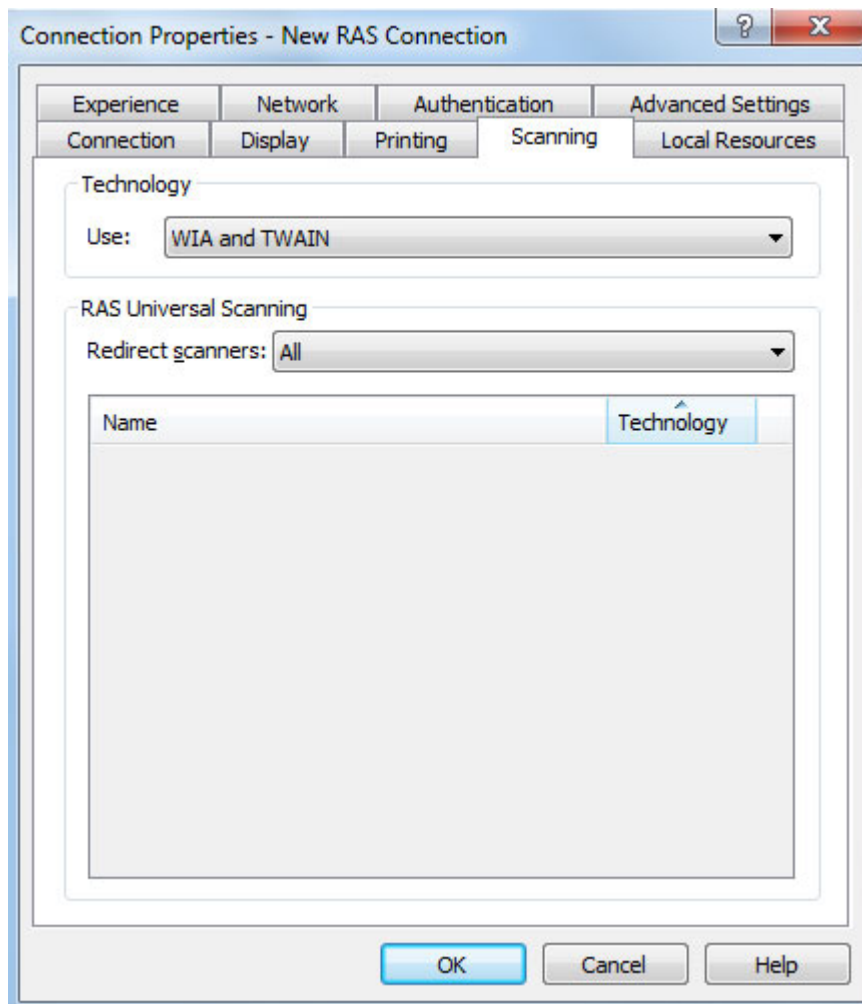
Select **Match exact printer name** to match the name exactly as inserted in the custom text box. Please note that the remote printer name may be different than the original printer name. Also note that local printers may not redirect due to server settings or policies.

You can specify the time a printer will be forced as default. If the default printer is changed during this time after the connection is established, the printer is reset as default.

Select the **Update the remote default printer if the local default printer is changed** option to change the remote default printer automatically when the local default printer is changed. Please note that the new printer must have been previously redirected.

Scanning

On the **Scanning** tab page, you can specify a scanner that should be used when one is required by a published application.

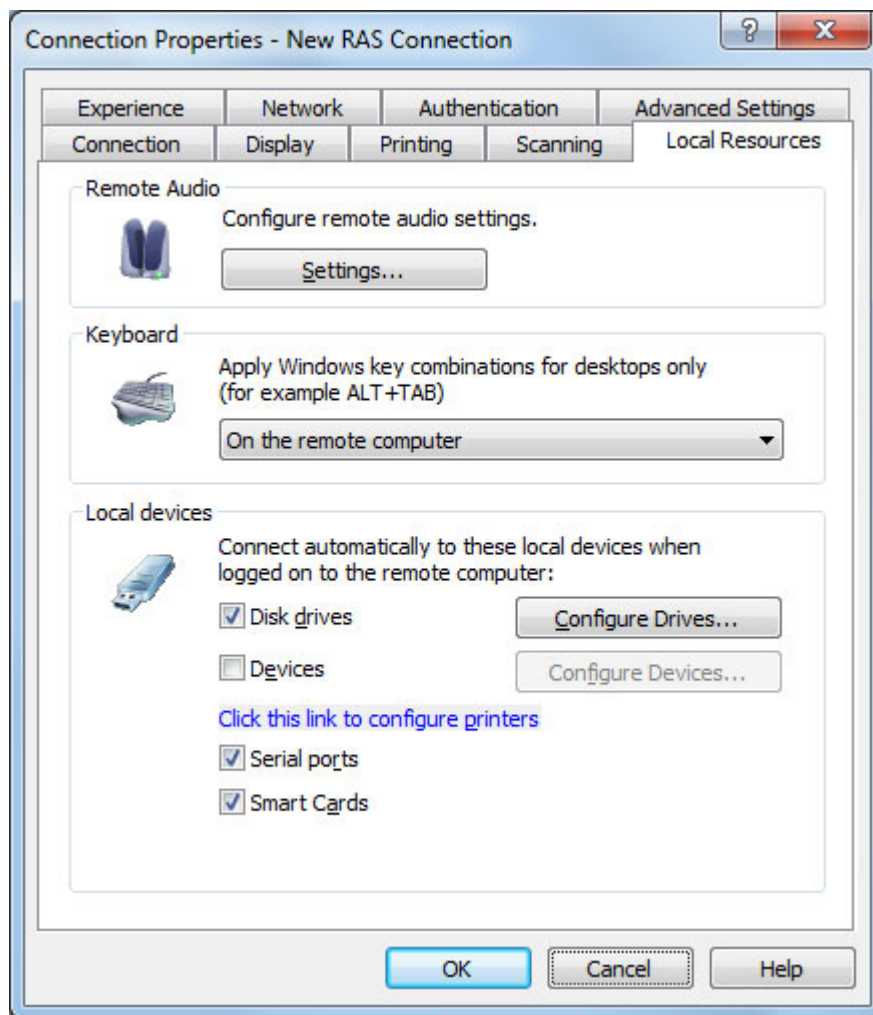


You can set the following options on the **Scanning** tab page:

- **Use.** Allows you to select a scanning technology. RAS Universal Scanning uses TWAIN and WIA redirection allowing an application to use either technology depending on the hardware type connected to the local computer. If you select **None**, scanning will be disabled.
- **Redirect Scanners.** Select scanners attached to your computer for redirection. You can select **All** (all attached scanners will be redirected) or **Specific only** (only the scanners you select in the provided list will be redirected).

Local Resources

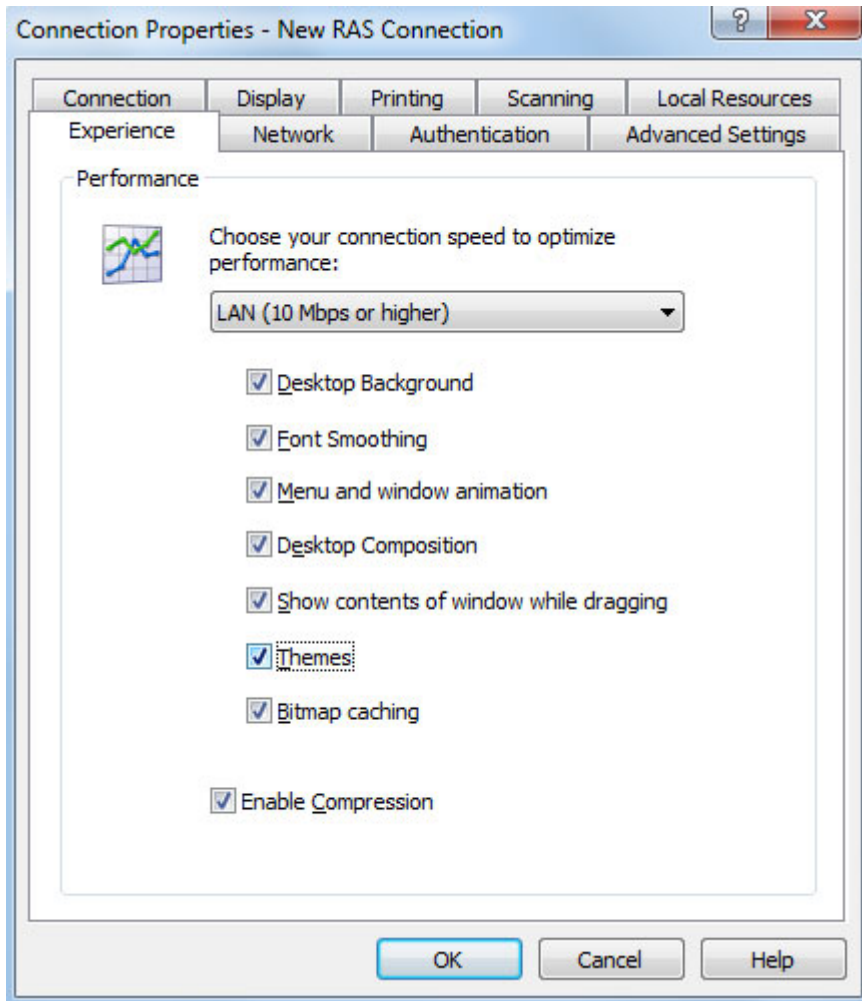
Use the **Local Resources** tab page to configure how local resources are handled by a remote server.



You can see that these are the same options that are available when using a standard Microsoft Remote Desktop Connection. The options are self-explanatory, so you can set them according to your preferences.

Experience

The **Experience** tab page allows you to tweak the connection speed to optimize the performance of the connection with the remote server.



If you are connecting to a remote server on a local network that runs at 100 Mbps or higher, it is usually safe to have all of the experience options turned on. It is also recommended to enable compression to have a more efficient connection.

Network

Use the **Network** tab page to configure a proxy server if you have to use one to connect to Parallels Remote Application Server.

To configure a proxy server, select the **Use proxy server** option and then select the protocol from the following list:

- **SOCKS4**. Enable this option to transparently use the service of a network firewall.
- **SOCKS4A**. Enable this option to allow a client that cannot connect to resolve the destination host's name to specify it.
- **SOCKS5**. Enable this option to be able to connect using authentication.
- **HTTP 1.1**. Enable this option to connect using a standard HTTP 1.1 protocol connection.

Specify the proxy host domain name or IP address and the port number.

For SOCKS5 and HTTP 1.1 protocols, select **Proxy requires authentication** and enter user credentials.

Authentication

Use the **Authentication** tab page to specify what happens if the server authentication fails.

In the **If authentication fails** drop-down list, select one of the following options:

- **Connect**. The user can ignore the certificate of the server and still connect.
- **Warn**. The user is alerted about the certificate and still has the ability to choose whether to connect or not.
- **Do not connect**. The user is not allowed to connect.

Advanced Settings

The Advanced **Settings** tab page allows you to customize the default behavior of Parallels Client.

You can specify the following properties:

- **Use client system colors**. Enable this option to use the client system colors instead of those specified on the remote desktop.
- **Use client system settings**. Enable this option to use the client system settings instead of those specified on the terminal server.
- **Create shortcuts configured on server**. For each published application, the administrator can configure shortcuts that can be created on the client's desktop and the Start menu. Select this option to create the shortcuts, or clear the option if you don't want to create them.
- **Register file extensions associated from the server**. For each published application, the administrator can create file extension associations. Use this option to either register the associated file extensions or not.
- **Redirect URLs to this computer**. Enable this option to use the local web browser when opening 'http:' links.
- **Redirect Mail to this computer**. Enable this option to use the local mail client when opening 'mailto:' links.

- **Always ask for credentials when starting applications.** If this option is enabled, the user will be prompted to enter their credentials when starting applications.
- **Allow Server to send commands to be executed by client.** Enable this option to allow commands being received from the server to be executed by the client.
- **Confirm Server commands before executing them.** If this option is enabled, a message is displayed on the client to confirm any commands before they are executed from the server.
- **Network Level Authentication.** Check this option to enable network level authentication, which will require the client to authenticate before connecting to the server.
- **Redirect POS devices.** Enables the Point of Service (POS) devices such as bar code scanners or magnetic readers that are attached to the local computer to be used in the remote connection.
- **Use Pre Windows 2000 login format.** If this option is selected, it allows you to use legacy (pre-Windows 2000) login format.

Connection Advanced Settings

Click the **Connection Advanced Settings** button to configure the following settings:

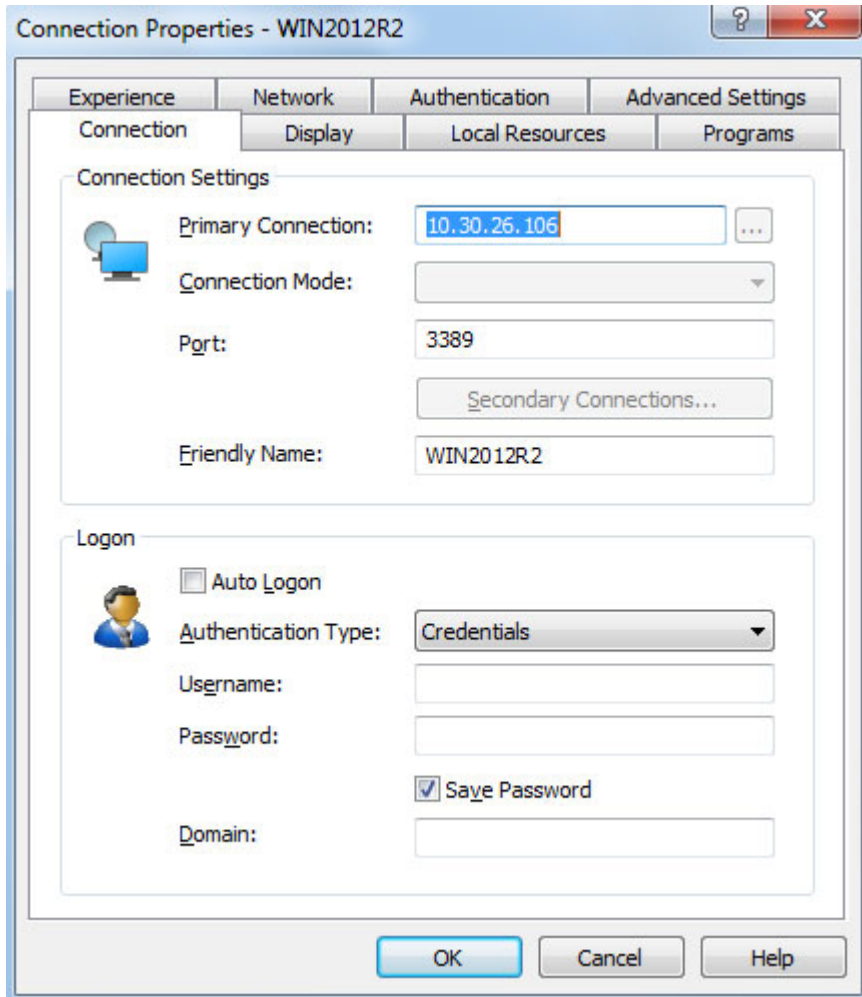
- **Connection Timeout.** This is the amount of time the client will try to connect to the Parallels Remote Application Server until the connection is aborted. While the connection is being established, the connection banner will be shown.
- **Show Connection Banner if connection is not established within.** Specifies the time period in seconds after which the connection banner will be displayed.
- **Show Desktop if published application does not start within.** If a published application is not launched within the time period specified in this field, the server's desktop will be loaded. This is helpful if an error occurs on the server while launching an application. By loading the server's desktop, the error can be seen.
- **Reconnect if connection is dropped.** Select this option and set the number of **Connection Retries**. If a connection is dropped, the Parallels Client will automatically try to reconnect.
- **Override computer name.** Specifies the name that your computer will use during a remote desktop session. If set, this will override the default computer name. Any filtering set by the administrator on the server side will make use of the **Override computer name**.

Configuring an RDP Connection

To modify the properties of an existing standard RDP connection, right-click it in the main Parallels Client window and then click **Connection Properties** in the context menu. This will open the **Connection Properties** dialog. Properties are grouped in the dialog by functionality using tab pages. The following subsections describe each tab page in detail.

Connection

The **Connection** tab page allows you specify connection settings and logon information.



In the **Connection Settings** section, specify the following properties:

- 3 In the **Primary Connection** field, specify the remote computer hostname or IP address.
- 4 The **Port** field contains the TCP port 3389 by default, which is the standard port for RDP connections. You can modify it if the port number was changed on the remote computer.
- 5 In the **Friendly Name** field, choose and type a name of your choice, so you could easily identify the server in Parallels Client later.

In the **Logon** section, specify the following properties:

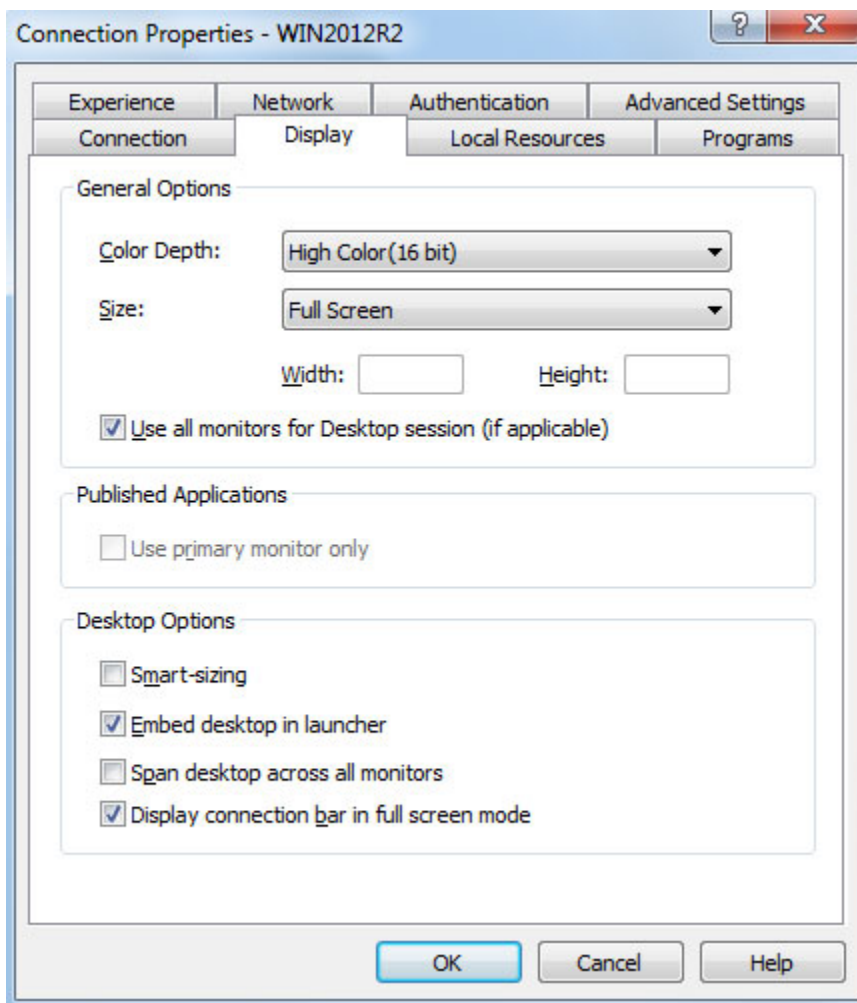
- 1 Select the **Auto Logon** option to enable Parallels Client to connect automatically without displaying the **Logon** dialog every time you connect to a remote server.
- 2 In the **Authentication type** drop-down list, select the desired method of authentication:

- **Credentials.** Select this option and then enter the username, password, and domain information. You will be authenticated on the remote server using the specified credentials.
- **Smart Card.** Select this option to authenticate using a smart card. When connecting to the remote server, insert a smart card into the card reader and then enter a PIN when prompted.
- **Single Sign-On.** This option will be included in the list only if the Single Sign-On module is installed during Parallels Client installation. Select this option to use local system credentials to connect to the remote server.

Note for Administrators: The allowed authentication type(s) must be specified in the RAS Console in **Connection / Authentication**.

Display

The **Display** tab page allows you to configure display options.



In the **General Options** section, specify the general display properties, including color depth and screen size. If you would like to specify a custom screen size, select **Custom** in the drop-down list and then specify the size using the **Width** and **Height** fields.

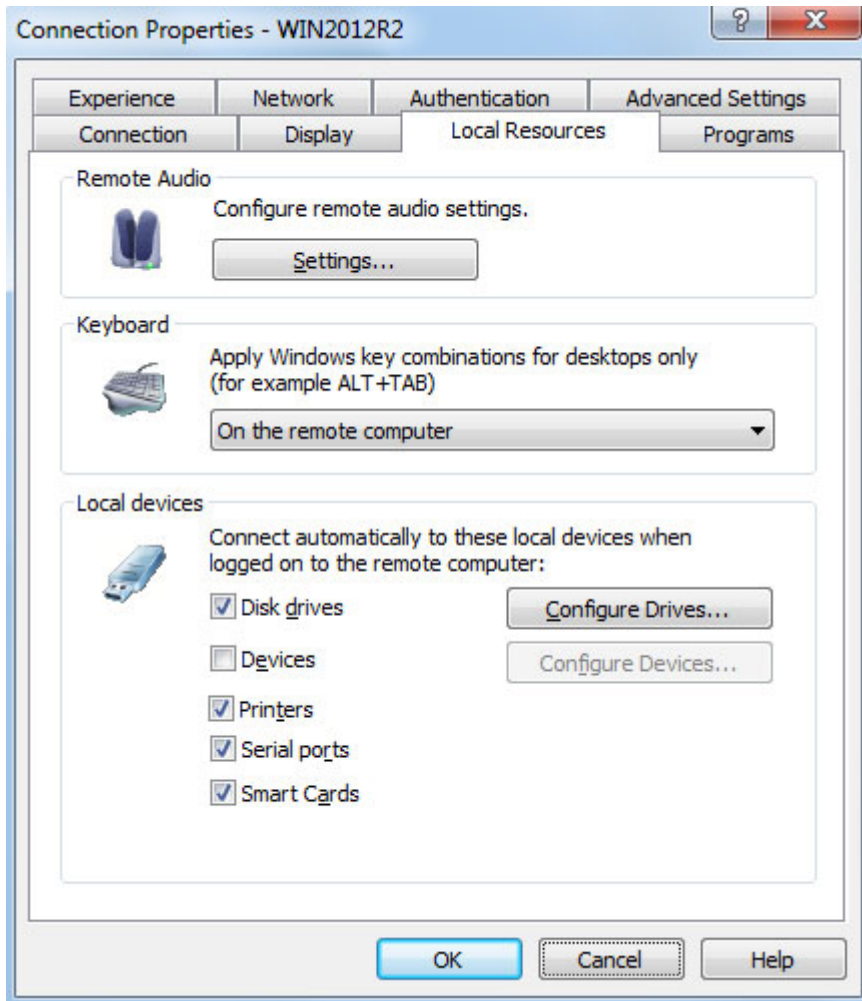
If you have more than one monitor connected to your computer, select the **Use all monitors for Desktop session** option to use all of them to display the remote desktop.

Specify the **Desktop Options** as follows:

- **Smart-sizing.** Desktop smart sizing will scale the RDP desktop to fit the connection window.
- **Embed desktop in launcher.** Enable this option to access the published desktop inside Parallels Client.
- **Span desktop across all monitors.** Enable this option to span the published desktops across all connected monitors (if you have more than one).
- **Display connection bar in full screen mode.** Enable this option to show the connection bar when connecting in full screen mode.

Local Resources

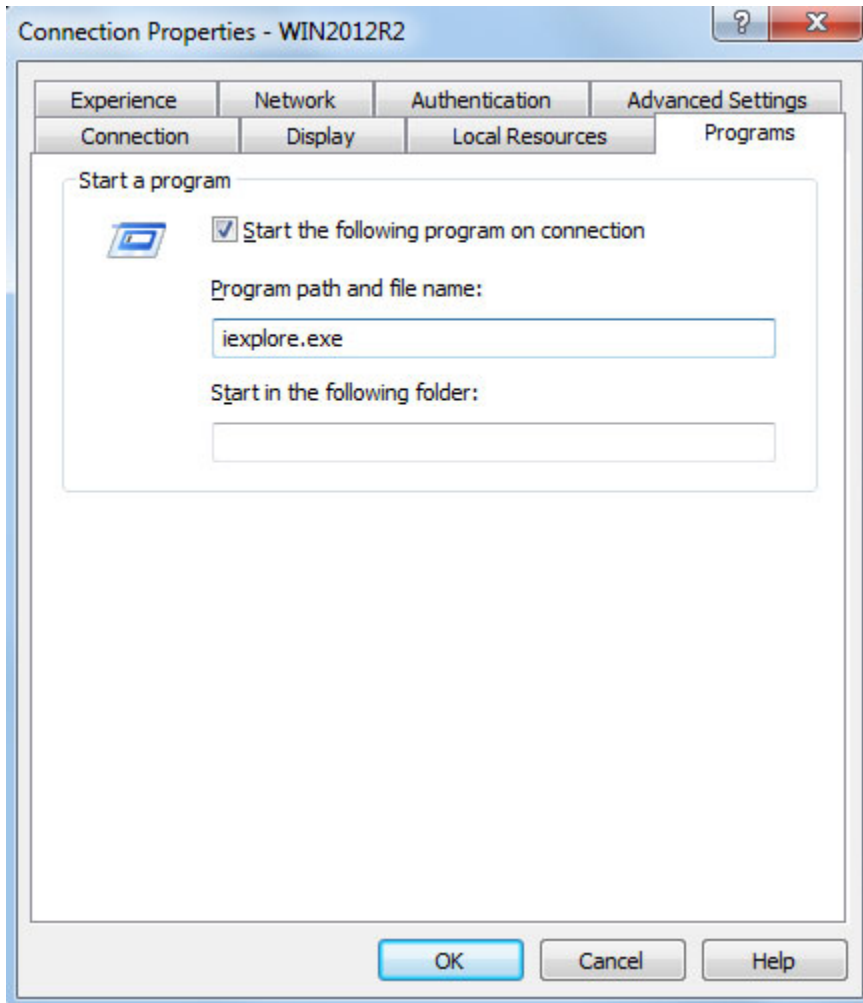
Use the **Local Resources** tab page to configure how local resources are handled by the remote desktop.



You can see that these are the same options that are available when using a standard Microsoft Remote Desktop Connection. The options are self-explanatory, so you can set them according to your preferences.

Programs

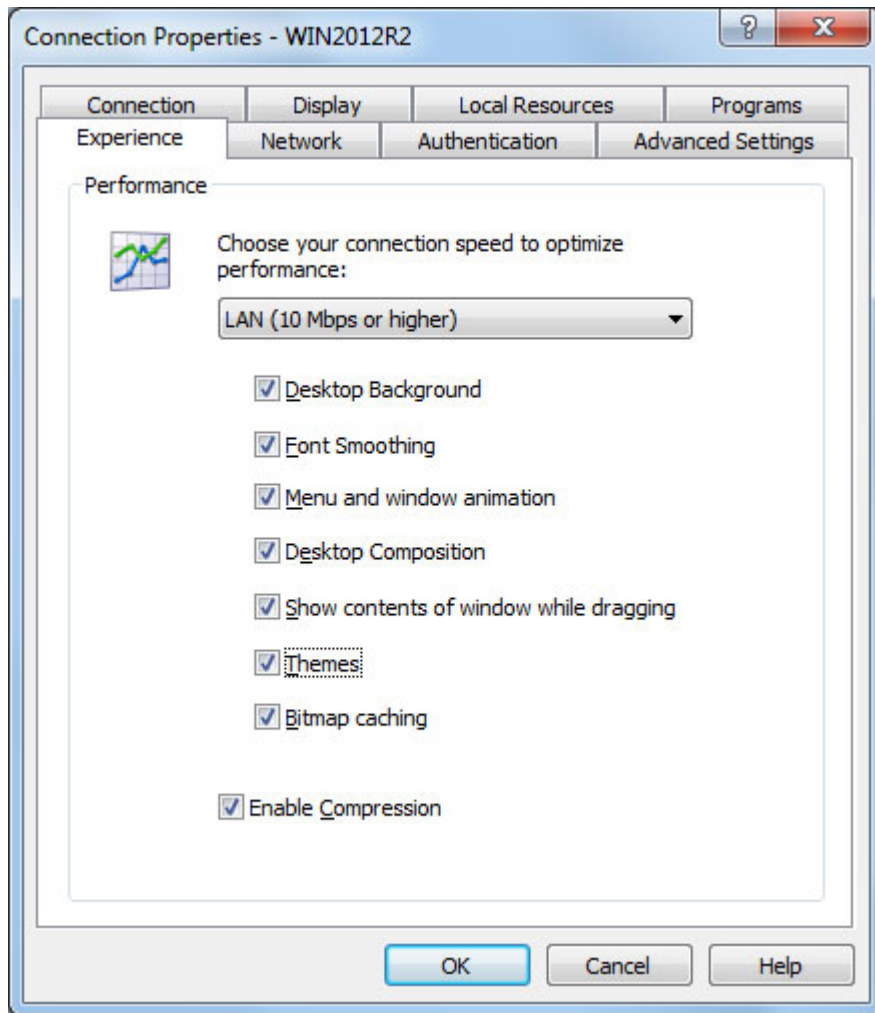
The Programs tab page allows you to specify a program that will be started automatically on the remote computer when you establish a connection with it.



Select the **Start the following program on connection** option and then specify the **Program path and file name** and **Start in the following folder** options.

Experience

The **Experience** tab page allows you to tweak the connection speed to optimize the performance of the connection with the remote computer.



If you are connecting to a remote computer on a local network that runs at 100 Mbps or higher, it is usually safe to have all of the experience options turned on. It is also recommended to enable compression to have a more efficient connection.

Network

Use the **Network** tab page to configure a proxy server if you have to use one to connect to the remote computer.

To configure a proxy server, select the **Use proxy server** option and then select the protocol from the following list:

- **SOCKS4**. Enable this option to transparently use the service of a network firewall.
- **SOCKS4A**. Enable this option to allow a client that cannot connect to resolve the destination host's name to specify it.
- **SOCKS5**. Enable this option to be able to connect using authentication.
- **HTTP 1.1**. Enable this option to connect using the standard HTTP 1.1 protocol connections.

Specify the proxy host domain name or IP address and the port number.

For SOCKS5 and HTTP 1.1 protocols, select **Proxy requires authentication** and enter user credentials.

Authentication

Use the **Authentication** tab page to specify what happens if server authentication fails.

In the **If authentication fails** drop-down list, select one of the following options:

- **Connect**. The user can ignore the certificate of the server and still connect.
- **Warn**. The user is alerted about the certificate and still has the ability to choose whether to connect or not.
- **Do not connect**. The user is not allowed to connect.

Advanced Settings

The Advanced **Settings** tab page allows you to customize the default behavior of Parallels Client.

You can specify the following properties:

- **Connect to console**. This option is used for administration of a Remote Desktop Session Host server. It acts as if a standard Remote Desktop connection is initiated from the command line with the `/admin` option.
- **Network Level Authentication**. Select this option to enable network level authentication, which will require the client to authenticate before connecting to the server.
- **Redirect POS devices**. Enables the Point of Service (POS) devices such as bar code scanners or magnetic readers that are attached to the local computer to be used in the remote connection.
- **Use Pre Windows 2000 login format**. If this option is selected, it allows you to use legacy (pre-Windows 2000) login format.

Connection Advanced Settings

Click the **Connection Advanced Settings** button to open the **Connection Advanced Settings** dialog.

In the Connection section, specify the following properties:

- **Connection Timeout.** The amount of time Parallels Client will try to connect to the remote computer until the connection is aborted. While the connection is being established, the connection banner will be shown.
- **Show Connection Banner if connection is not established within.** Specifies the time period in seconds after which the connection banner will be displayed.

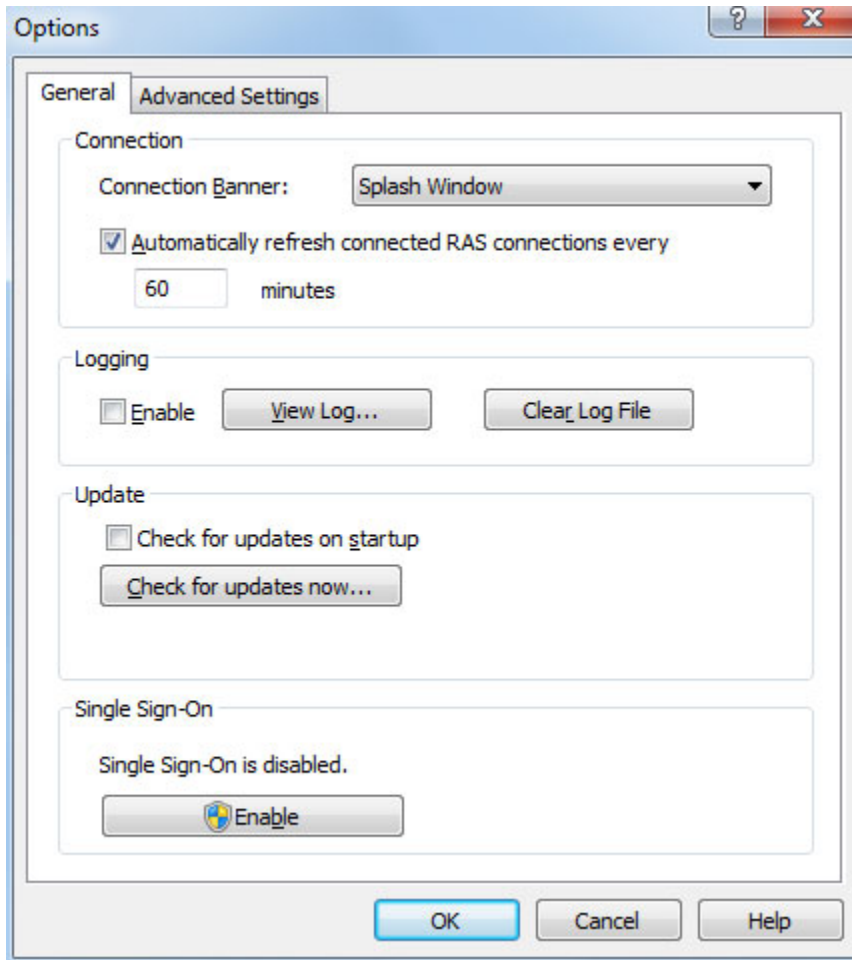
In the Reconnection section, specify the following properties:

- **Reconnect if connection is dropped.** Select this option and set the number of **Connection Retries**. If a connection is dropped, the Parallels Client will automatically try to reconnect.
- **Show Connection Banner if reconnection is not established within.** Specifies the time period in seconds after which the connection banner will be displayed.

Override computer name. Specifies the name that your computer will use during a remote desktop session. If set, this will override the default computer name. Any filtering set by the administrator on the server side will make use of the **Override computer name**.

Configuring Global Options

You can configure the Parallels Client global options by clicking the **Tools > Options** menu item. This will open the **Options** dialog.

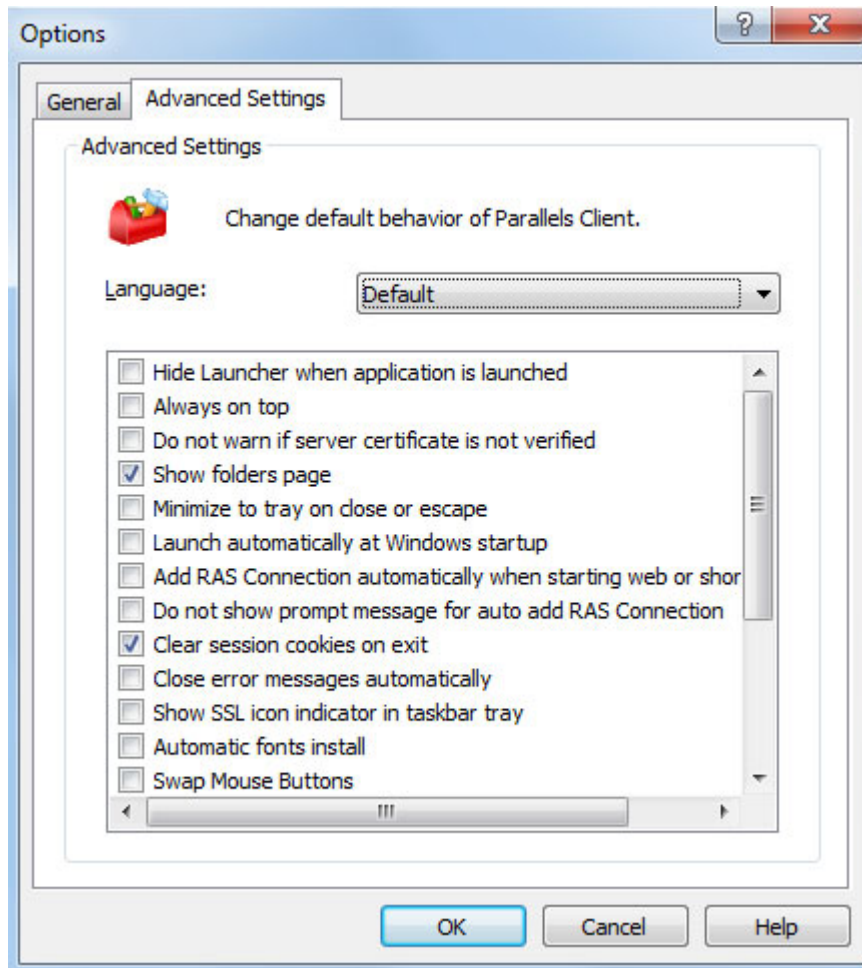


On the **General** tab page, specify the following options:

- **Connection Banner.** Connection banner is shown when the Parallels Client is connecting to a server or a desktop. You can choose to have a Splash Window, a Taskbar Toast Window icon, or you can choose to hide the connection banner.
- **Automatically refresh connected RAS connection every.** Specifies the auto refresh time frame for each connection.
- **Logging.** Enables or disables logging and allows you to view the log file.
- **Check for updates on startup.** This option is available only with administrative rights. If this option is selected, Parallels Client will check for available Parallels Client updates on startup. You can also click the button to check for updates.

- **Single Sign-On.** Single Sign-On should be enabled if you want to use your system credentials when connecting to a Farm.

The **Advanced Settings** tab page allows you to configure advanced options.



The following advanced options are available:

- **Hide Launcher when application is launched.** If this option is enabled, the launcher will be minimized in the system tray after an application is launched.
- **Always on Top.** With this feature enabled, other applications will no longer mask the launcher.
- **Do not warn if server certificate is not verified.** When connected over SSL, and the certificate is not verified, a warning message will be displayed. You can disable this warning message by enabling this option.
- **Show folders page.** Enabling this option will show the available folders while showing the hierarchy of the application groups as configured on the server.
- **Minimize to tray on close or escape.** Enable this feature to place the Parallels Client into the System Tray when you click on the **Close** button or hit escape.

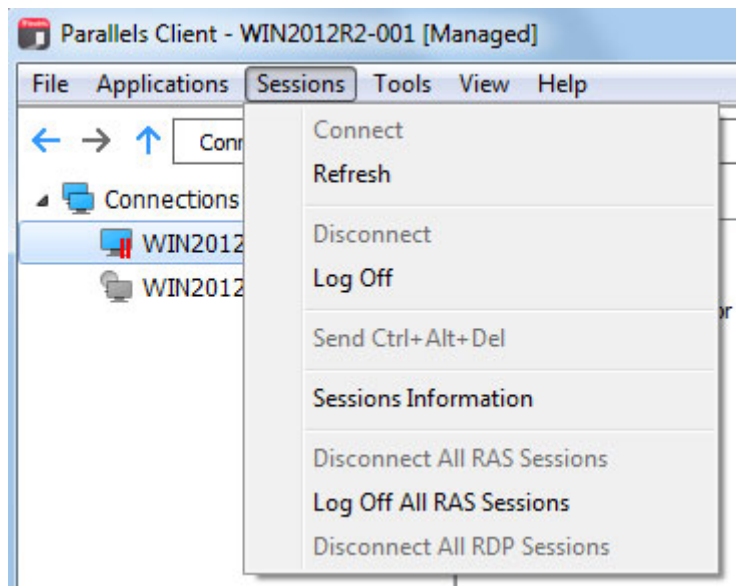
- **Launch automatically at Windows startup.** This option will place a shortcut in the start menu folder of the client and the Parallels Client will launch automatically on Windows startup.
- **Add RAS Connection automatically when starting web or shortcuts items.** This option will add the connection preferences in the Parallels Client when starting an item contained in a connection that is not yet listed.
- **Don't show prompt message for auto add RAS Connections.** Enable this option to disable prompt messages when adding auto connections.
- **Clear session cookies on exit.** When a user logs on, a Parallels Remote Application Server logon cookie is kept on the client side. This will allow the user to connect again with Remote Application Server without re-authenticating. Check this option to delete any cookies when the user closes the Parallels Client.
- **Close error messages automatically.** When a session disconnects because of an error, the error is automatically dismissed after 15 seconds.
- **Show SSL icon indicator on taskbar tray.** When a session connects using SSL, an icon is added on the taskbar tray. Double-click on the icon and you will see your certificate information.
- **Automatic fonts installed** (administrators only). If automatic fonts are installed on the server, they will be available when a session connects.
- **Swap Mouse Buttons.** When enabling this setting, the mouse buttons will be swapped on the remote computer.
- **Redirect vendor paper sizes for RAS Universal Printing.** When enabling this setting, non-standard paper sizes which are not included in the standard options will be redirected to the client. Sizes may vary depending on the vendor.
- **Raw printing support.** When enabling this setting, printing will still work for applications sending data in RAW format.
- **Convert non distributable fonts data to images.** During RAS Universal Printing, if a document includes non-distributable fonts, each page is converted to an image.
- **Cache printers hardware information.** Caching of printer hardware information locally to speed-up RAS universal printer redirection.
- **Cache RAS Universal Printing embedded fonts.** Caching of embedded fonts locally to speed-up RAS universal printing process time.
- **DPI aware.** This will force a published application to be DPI-aware depending on the client's DPI settings. This feature works on Windows 8.1 or higher.

Using a RAS Connection

To connect to Parallels Remote Application Server, double-click a connection in the **Connections** list (or right-click > **Connect**).

You can have multiple active connections at the same time (both Remote Application Server and standard RDP). To switch between active connections in Parallels Client, click a connection in the left pane or click the corresponding tab page in the right pane.

Every time you connect to a remote server from Parallels Client, a session is created for the connection. To manage a session, select a connection in the **Connections** list and then click the **Sessions** menu.



The menu has the following options allowing you to perform session management tasks:

- **Connect.** Connect to Remote Application Server using the selected connection settings. If the selected connection is active, this menu item will be disabled. Depending on whether a connection is active or not, other menu items will also be disabled or enabled.

Tip: Active connections have a blue monitor icon, while inactive connections have a gray monitor icon.

- **Refresh.** Use this option to refresh the session and the the published resources view in the right pane. If there were changes on the Parallels Remote Application Server side, they will be reflected in the Parallels Client. You can also use the recycle icon (next to the connection information bar at the top) to perform the same task.
- **Disconnect.** Disconnects the selected connection.
- **Logoff.** Logs off Parallels Client from the session.
- **Send Ctrl+Alt+Del.** Sends the key combination to the remote computer.
- **Sessions Information.** Opens the **Sessions** dialog that lists all active sessions. You can select a session and then click the **Show Information** button to see additional session info.
- **Disconnect All RAS Sessions.** Disconnects all active Remote Application Server sessions.
- **Log Off All RAS Sessions.** Logs off Parallels Client from all active Remote Application Server sessions.

- **Disconnect All RDP Sessions.** Disconnects all active RDP sessions.

Another menu can be accessed by right-clicking an active connection in the **Connections** list. The menu has the following items:

- **Connect.** This item is disabled if the connection is currently active.
- **Refresh.** Refreshes the published resources view in the right pane.
- **Connection Properties.** Opens the **Connection Properties** dialog where you can configure the connection. See **Configuring a RAS Connection** for details (p. 22).
- **Delete.** Deletes the connection.
- **Change Domain Password.** Allows you to change the current user's domain password. Click this item to open the **Logon** dialog where you need to type the current password. Click **OK** to open the **Change Password** dialog and type a new password in both fields. Click **OK** to change the domain password.
- **Create Shortcuts for All Visible Applications.** Creates shortcuts on the local desktop for all published applications displayed in the right pane of the main window.
- **Delete Shortcuts from Desktop.** Deletes the shortcuts that were created after clicking the **Create Shortcuts for All Visible Applications** menu item.
- **Disconnect.** Disconnects from Parallels Remote Application Server.
- **Log Off.** Logs off Parallels Client from the session.

Using an RDP Connection

After adding a Standard Remote Desktop connection, double-click it (or right-click > **Connect**) to establish a connection with the remote computer.

You can have multiple active connections at the same time (both standard RDP and Remote Application Server). To switch between active connections in Parallels Client, click a connection in the left pane or click the corresponding tab page in the right pane.

Right-click an active RDP connection in the **Connections** list to perform the following actions:

- **Connect.** This item is disabled for an active connection.
- **Connection Properties.** Opens the Connection Properties dialog where you can configure the connection. See **Configuring an RDP Connection** for details (p. 33).
- **Delete.** Deletes the connection.
- **Smart Sizing.** If enabled, smart-sizing will resize the remote desktop so it fits the available area.
- **Embed in Launcher.** Click this item to move the remote desktop to a new window (it will float outside the main Parallels Client window). To return the remote desktop back to the Parallels Client window, click the menu item again.
- **Create Shortcut on Desktop.** Creates a shortcut for this connection on the local desktop.

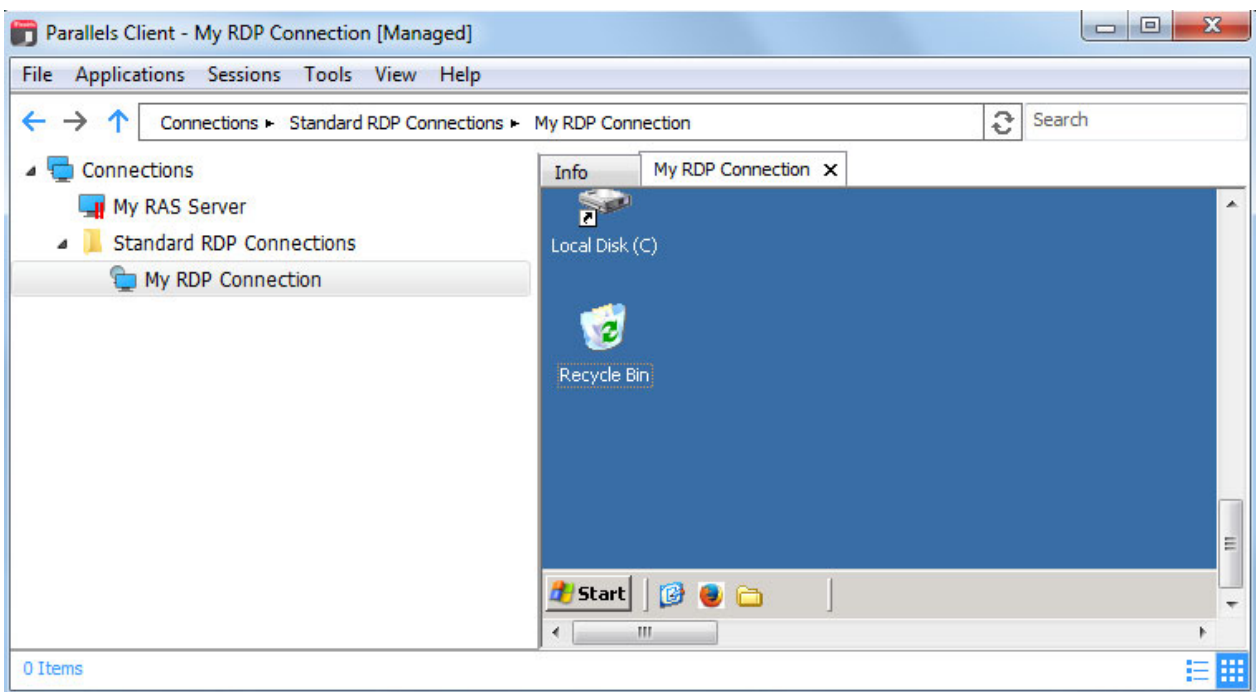
- **Delete Shortcut from Desktop.** Removes the connection shortcut from the desktop.

Grouping RDP Connections Using Folders

You can group standard RDP connections in the main Parallels Client window using folders.

To create a folder and add RDP connections to it:

- 1 In the main Parallels Client window, click **File > Add Folder**.
- 2 Type a folder name.
- 3 Click an RDP connection and drag it to the folder that you created.



Exporting and Importing Parallels Client Settings

You can export current Parallels Client settings to a file to have a backup or to import the settings into a Parallels Client installed on a different computer. The following settings are exported:

- All existing connections including all individual connection properties.
- Parallels Client global options.

To export the current Parallels Client settings to a file, click **File** on the main menu and then click **Export Settings**. In the dialog that opens, specify a file name and a destination folder. Click **Save** to export the settings. The file is saved with the ".2xc" extension.

To import the settings, click **File > Import Settings**. In the dialog that opens, select the ".2xc" file and click **Open**. Please note that the Parallels Client settings stored in a file will override the current Parallels Client settings.

Parallels Client Command Line Parameters

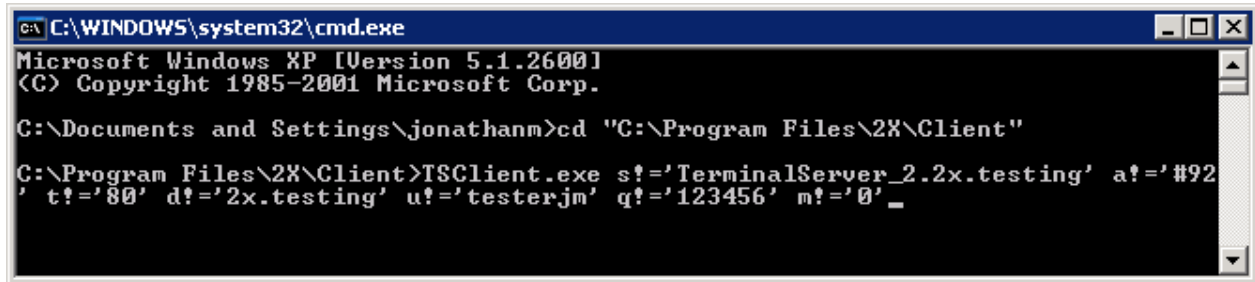
Parallels Client for Windows parameters are available when launching published application and published desktop from the command line.

Parameters	Note
s!='primary server'	Primary Server hostname or IP address.
b!='backup server'	Secondary Server hostname or IP address.
a!='application/desktop id'	Published Application/Desktop ID.
p!='override application params'	
t!='port'	Port of the RAS Remote Application Serverconnection.
u!='username'	Username for the user to connect with.
q!='password'	Password for the user.
d!='domain' ignored if user name is in UPN format	Domain name.
l!='0/1' 0 use primary server, 1 user backup server	Specify value in order to connect either to primary or backup server.
m!='connection mode' (gateway mode = 0, direct mode 1, gateway ssl mode = 2, direct ssl = 3, direct rdp=4)	Specify value for the connection mode.
o!='0/1' if set to 1 credentials are overwritten with SSO information if available	When set to 1, credentials are overwritten with SSO credentials.
i!='connection alias'	Specify a connection Alias.
c!	Always ask for credentials.
r!	Reconnect if connection is dropped .

Example:

- 1 In Command Prompt, go to the location were Parallels Client is installed and run the following command:


```
TSCClient.exe s!='2008ad1.2x.testing' a!='#50' t!='80' d!='2x.testing'  
u!='testerjm'q!='123456' m!='0'
```



```
C:\WINDOWS\system32\cmd.exe  
Microsoft Windows XP [Version 5.1.2600]  
<C> Copyright 1985-2001 Microsoft Corp.  
C:\Documents and Settings\jonathanm>cd "C:\Program Files\2X\Client"  
C:\Program Files\2X\Client>TSCClient.exe s!='TerminalServer_2.2x.testing' a!='#92'  
' t!='80' d!='2x.testing' u!='testerjm' q!='123456' m!='0' _
```

Running the above command will launch Published application with ID92, for user testerjm.

Index

A

- Adding a New Connection - 20
- Advanced Parallels Client Installation - 17
- Advanced Settings - 32, 40
- Authentication - 32, 40

C

- Configuring a RAS Connection - 22
- Configuring an RDP Connection - 33
- Configuring Global Options - 42
- Connecting to Parallels Remote Application Server - 13
- Connection - 23, 34

D

- Display - 26, 35

E

- Experience - 31, 39
- Exporting and Importing Parallels Client Settings - 47

G

- Getting Started - 5
- Grouping RDP Connections Using Folders - 47

I

- Installing Parallels Client Manually - 11
- Installing Parallels Client Using an Invitation Email - 5

L

- Local Resources - 30, 37

M

- Manually Downloading and Installing Parallels Client - 11

N

- Network - 31, 39

P

- Parallels Client Command Line Parameters - 48
- Printing - 27
- Programs - 38

S

- Scanning - 29
- System Requirements - 5

U

- Using a RAS Connection - 44
- Using an RDP Connection - 46
- Using Parallels Client for Windows - 20