



SWsoft, Inc.

SWsoft SiteBuilder 3.2 for Windows

Installation Guide



(c) 1999-2006

ISBN: N/A
SWsoft, Inc.
13755 Sunrise Valley Drive
Suite 325
Herndon
VA 20171 USA
Phone: +1 (703) 815 5670
Fax: +1 (703) 815 5675

Copyright © 1999-2006 by SWsoft, Inc. All rights reserved
Distribution of this work or derivative of this work in any form is prohibited unless prior written permission is obtained from the copyright holder.
Solaris is a registered trademark of Sun Microsystems, Inc.
X Window System is a registered trademark of X Consortium, Inc.
Intel, Pentium, and Celeron are registered trademarks of Intel Corporation.
MS Windows, Windows 2003 Server, Windows XP, Windows 2000, Windows NT are registered trademarks of Microsoft Corporation.
IBM DB2 is a registered trademark of International Business Machines Corp.
SSH and Secure Shell are trademarks of SSH Communications Security, Inc.
MegaRAID is a registered trademark of American Megatrends, Inc.
PowerEdge is a trademark of Dell Computer Corporation.
Request Tracker is a trademark of Best Practical Solutions, LLC
ActiveSite Compiller v4 is a trademark of Intorel, Inc.
XML-RPC Library under MIT License

Contents

Preface	6
About This Guide	6
Who Should Read This Guide	6
Organization of This Guide	7
Documentation Conventions.....	7
Typographical Conventions.....	7
General Conventions	8
Feedback	8
Preparing for Installation	9
About SiteBuilder	9
System Requirements	9
Software Requirements.....	10
Hardware Requirements	10
About SiteBuilder Installation Wizard	11
How It Works	12
Components Installed During Installation Process	13
Installing SiteBuilder	14
Launching SiteBuilder Installation Wizard.....	15
Selecting Type of Installation	18
Typical Installation.....	19
Custom Installation.....	20
Installing Templates and Language Packages	29
Configuring IIS Security Settings	30
Removing SiteBuilder from Your System	31
Removing SiteBuilder Using MS Windows Interface	31
Removing SiteBuilder Using SiteBuilder Installation Wizard	32
Remaining Data	34
Repairing SiteBuilder	35
Upgrading SiteBuilder	38
Migrating from SiteBuilder 2.0.5 to SiteBuilder 3.2	38
Initial Conditions	38
Migration Scheme	39
Migration General Rules	39
Transferring User Accounts.....	39
Transferring Sites	40
Limitations of Migration Procedure	40
Upgrading SiteBuilder 3.0 to SiteBuilder 3.2	41

Clustering Installation	44
Overview	45
Logical Architecture	45
Deployment Architecture	46
Installation Walkthrough	47
Prerequisites	47
Installing SiteBuilder Server	48
Appendix	50
Index	53

Table of Figures

Figure 1: Selecting SQL Server	15
Figure 2: Launching SiteBuilder Installation Wizard	16
Figure 3: Viewing SiteBuilder License Agreement	17
Figure 4: Selecting Type of Installation	18
Figure 5: Selecting Destination Folder	19
Figure 6: Completing SiteBuilder Installation	20
Figure 7: Selecting Destination Folders	21
Figure 8: Selecting Shortcuts Location	22
Figure 9: Indicating SQL Server Connection Parameters	23
Figure 10: Selecting Installation Scenario	24
Figure 11: Providing IIS Web Site Parameters	25
Figure 12: Selecting IIS Web Site	26
Figure 13: Launching Installation Process	27
Figure 14: Completing SiteBuilder Installation	28
Figure 15: Removing SiteBuilder, Welcome Screen	32
Figure 16: Selecting Removal Operation	33
Figure 17: Launching Removal Process	33
Figure 18: Completing Removal Operation	34
Figure 19: Repairing SiteBuilder, Welcome Screen	35
Figure 20: Selecting Repair Operation	36
Figure 21: Launching Repair Process	36
Figure 22: Completing Repair Operation	37
Figure 23: Upgrading SiteBuilder, Welcome Screen	41
Figure 24: Launching Upgrade Process	42
Figure 25: Completing Upgrade Operation	42
Figure 26: Application components	45
Figure 27: Web Farm	46

CHAPTER 1

Preface

In This Chapter

About This Guide.....	6
Who Should Read This Guide.....	6
Organization of This Guide.....	7
Documentation Conventions.....	7
Feedback	8

About This Guide

SWsoft SiteBuilder 3.2 for Windows Installation Guide instructs you how to install, upgrade, remove and repair SiteBuilder software. This guide also contains instructions on clustering installation.

Who Should Read This Guide

This guide is intended for those who downloaded SiteBuilder and want to install it in their systems.

Organization of This Guide

The guide consists of four chapters:

- **Chapter 2, Preparing for Installation**, describes the initial system requirements and preparations for the installation process.
- **Chapter 3, About SiteBuilder Installation Wizard**, provides detailed information about Installation Wizard and what components are installed during the process.
- **Chapter 4, Installing SiteBuilder**, describes types of the installation and provides a step-by-step description of two types of the SiteBuilder for Windows installation.
- **Chapter 5, Removing SiteBuilder from Your System**, describes the SiteBuilder for Windows uninstallation process.
- **Chapter 6, Repairing SiteBuilder**, describes the SiteBuilder for Windows repair operation.
- **Chapter 7, Upgrading SiteBuilder**, provides detailed information about the migration and upgrade processes.
- **Chapter 8, Clustering Installation**, describes the logic of clustering process and contains instructions on clustering installation.
- **Appendix**, contains the list of installer parameters for unattended installation.

Documentation Conventions

Before you start using this guide, it is important to understand the documentation conventions used in it.

Typographical Conventions

Before you start using this guide, it is important to understand the documentation conventions used in it.

The following kinds of formatting in the text identify special information.

Formatting convention	Type of Information	Example
Special Bold	Items you must select, such as menu options, command buttons, or items in a list.	Go to the System tab.
	Titles of chapters, sections, and subsections.	Read the Basic Administration chapter.

<i>Italics</i>	Used to emphasize the importance of a point, to introduce a term or to designate a command line placeholder, which is to be replaced with a real name or value.	The system supports the so called <i>wildcard character</i> search.
Monospace	The names of commands, files, and directories.	The license file is located in the http://docs/common/licenses directory.
Preformatted	On-screen computer output in your command-line sessions; source code in XML, C++, or other programming languages.	<pre># ls -al /files total 14470</pre>
Preformatted Bold	What you type, contrasted with on-screen computer output.	<pre># cd /root/rpms/php</pre>
CAPITALS	Names of keys on the keyboard.	SHIFT, CTRL, ALT
KEY+KEY	Key combinations for which the user must press and hold down one key and then press another.	CTRL+P, ALT+F4

General Conventions

- Chapters in this guide are divided into sections, which, in turn, are subdivided into subsections. For example, **Documentation Conventions** is a section, and **General Conventions** is a subsection.
- When following steps or using examples, be sure to type double-quotes ("), left single-quotes ('), and right single-quotes (') exactly as shown.

Feedback

If you spot a typo in this guide, or if you have thought of a way to make this guide better, we would love to hear from you!

If you have a suggestion for improving the documentation (or any other relevant comments), try to be as specific as possible when formulating it. If you have found an error, please include the chapter/section/subsection name and some of the surrounding text so that we could find it easily.

Please submit a report by e-mail to userdocs@swsoft.com.

CHAPTER 2

Preparing for Installation

This chapter provides general information about SiteBuilder itself and initial system requirements that must be met in order to launch SiteBuilder installed in user's system.

Before initiating the SiteBuilder installation process, check whether your system meets the following requirements:

- Software requirements (see page 10)
- Hardware requirements (see page 10)

After making sure that software and hardware described above are present in the system, you are ready to launch the installation process.

In This Chapter

About SiteBuilder	9
System Requirements	9

About SiteBuilder

SiteBuilder consists of two parts: the Wizard and the Administrator Panel.

Wizard is a web application enabling its users to create web sites and publish them on the Internet.

The Administrator Panel is a tool for managing and maintaining web sites created in the Wizard.

System Requirements

This section describes what software and hardware should be installed in your system for SiteBuilder to operate properly.

Software Requirements

In order for SiteBuilder to work properly, the following software should be installed in the system prior to the SiteBuilder installation:

- OS Windows 2000 Advanced Server with Service Pack 4 or OS Windows Server 2003 any edition with Service Pack 1.

Note: It is very important to have the latest service packs installed in your operating systems prior to installing SiteBuilder.

- If you have OS Windows 2000 Advanced Server with Service Pack 4 installed, then you need IIS 5.1 installed on your computer.
- If you have OS Windows Server 2003 any edition with Service Pack 1, then you need IIS 6.0 installed on your computer.

Note: If your IIS works in the 64-bit mode, it will be automatically switched to the 32-bit mode.

Below is the list of another type of software that should also be installed in the system prior to SiteBuilder installation. If this software is not installed in the system, the SiteBuilder Installation Wizard installs it automatically during the installation process:

- MS framework.net 2.0
- MS SQL Server 2005 Express Edition
- MDAC 2.8
- Windows Installer 3.1
- Internet Explorer 5.x or later

Note: Your computer must not be a domain controller. Otherwise, installation will end with the error.

Hardware Requirements

Prior to installing the SiteBuilder program, make sure that your server meets the following hardware requirements:

- Processor: 1-gigahertz (GHz) Pentium III-compatible or faster processor recommended
- Memory: 512 megabytes (MB) of RAM or more recommended
- Hard Disk: Approximately 350 MB of available hard-disk space for the recommended installation
- Drive: CD-ROM or DVD-ROM drive

CHAPTER 3

About SiteBuilder Installation Wizard

The main purpose of the SiteBuilder Installation Wizard is to copy SiteBuilder files to the user's system in the folders indicated by a user during the installation process. It also checks and then copies other software, necessary for running SiteBuilder, if you did not install it previously on the computer (see **Software Requirements** (see page 10)). This chapter describes operations performed by the SiteBuilder Installation Wizard and tells what SiteBuilder components are installed during the installation process.

In This Chapter

How It Works.....	12
Components Installed During Installation Process	13

How It Works

During the SiteBuilder installation process, the SiteBuilder Installation Wizard performs the following operations in the order as they are listed below:

- 1** Checks for prerequisites, i.e. checks your computer for other additional software, necessary for running SiteBuilder for Windows (see the detailed list of this software in **Software Requirements** (see page 10)). If this software is not found, the SiteBuilder Installation Wizard installs necessary programs to your system.
- 2** Stops the installation process if either one of the following software requirements is not met:
 - Your operation system is neither Windows Server 2003 Enterprise Edition nor Windows 2000 Advanced Server
 - Your computer is a domain controller
 - IIS version is earlier than 5.0
- 3** Copies all necessary SiteBuilder files (for a detailed information, read **Components Installed During Installation Process** (see page 13)).
- 4** Creates virtual directories and sites for Web and Sites folders.
- 5** Sets up “Site Builder for Windows Hosting Service” service and launches it.
- 6** Initializes database. In the case of remote server, it creates users, providing them, as well as local Network Service users, with rights to access databases.
- 7** Dynamically creates shortcuts for the Wizard and Administrator Panel default pages.
- 8** Uninstalls later versions of the product at the end of the installation process.
- 9** If required, the SiteBuilder Installation Wizard installs ASP.net extensions and allows them for site and virtual directories. It also installs ASP.net.

Components Installed During Installation Process

During the SiteBuilder installation process the following SiteBuilder components are dynamically generated by the Installation Wizard in your system:

- *Web application files.* Images, styles, DLL files, and design.
- *Content.* Templates of a site content placement on web pages.
- *Design.* Site skin templates.
- *Site Builder for Windows Hosting Service files.*
- *Other components:* Localization files, skins, modules,
- Empty folders to store sites and logs.

CHAPTER 4

Installing SiteBuilder

Before installing SiteBuilder, download the SiteBuilder Installation Wizard bundle. It can be found at SWsoft site (available [here](http://www.swsoft.com/) (<http://www.swsoft.com/>)).

In This Chapter

Launching SiteBuilder Installation Wizard.....	15
Selecting Type of Installation	18
Installing Templates and Language Packages.....	29
Configuring IIS Security Settings	30

Launching SiteBuilder Installation Wizard

➤ *To launch the SiteBuilder installation process:*

- 1 Open your Windows Explorer.
- 2 Go to the folder where you have downloaded the SiteBuilder Installation Wizard bundle.
- 3 Click the `sitebuilder4win_3.2.0_build060721.1xx.exe` file.
- 4 On the screen appeared, indicate what type of connection you have with the remote MS SQL server.

Note: You must be logged in to your computer as administrator.

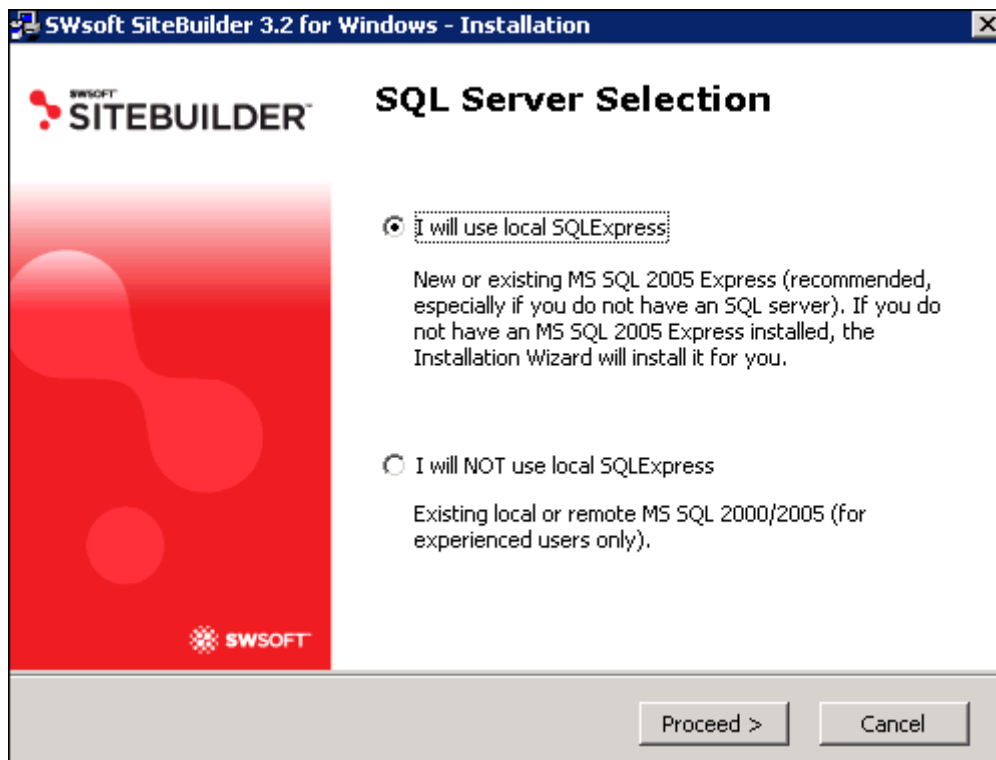


Figure 1: Selecting SQL Server

- 5 If you do not have a local MS SQL 2005 Express installed, but want to have it installed on your computer, select the **I will use local SQLExpress** option.

When you select this option, the SiteBuilder Installation Wizard runs a check on your computer to detect this software. If the software selected is not found, MS SQL 2005 Express is installed on your computer prior to the SiteBuilder installation. If the SiteBuilder Installation Wizard detects this software on your computer, the installation process continues.

Note: This option is recommended to regular users.

- 6 If you select the I will NOT use local SQLExpress option, set parameters of connection with a remote or local SQL server. SiteBuilder doesn't run a check for this software.

Note: Select this option only if you are an experienced computer user. Also you should be administrator of this remote server.

After the SiteBuilder Installation Wizard completes the software requirements check on your computer, the Welcome to the Installation Wizard for SWsoft SiteBuilder 3.2 for Windows screen appears.



Figure 2: Launching SiteBuilder Installation Wizard

- 7 Click Next to continue the installation.
The End-User License Agreement screen appears.
- 8 Read the terms and conditions for using SWsoft SiteBuilder 3.2 for Windows.

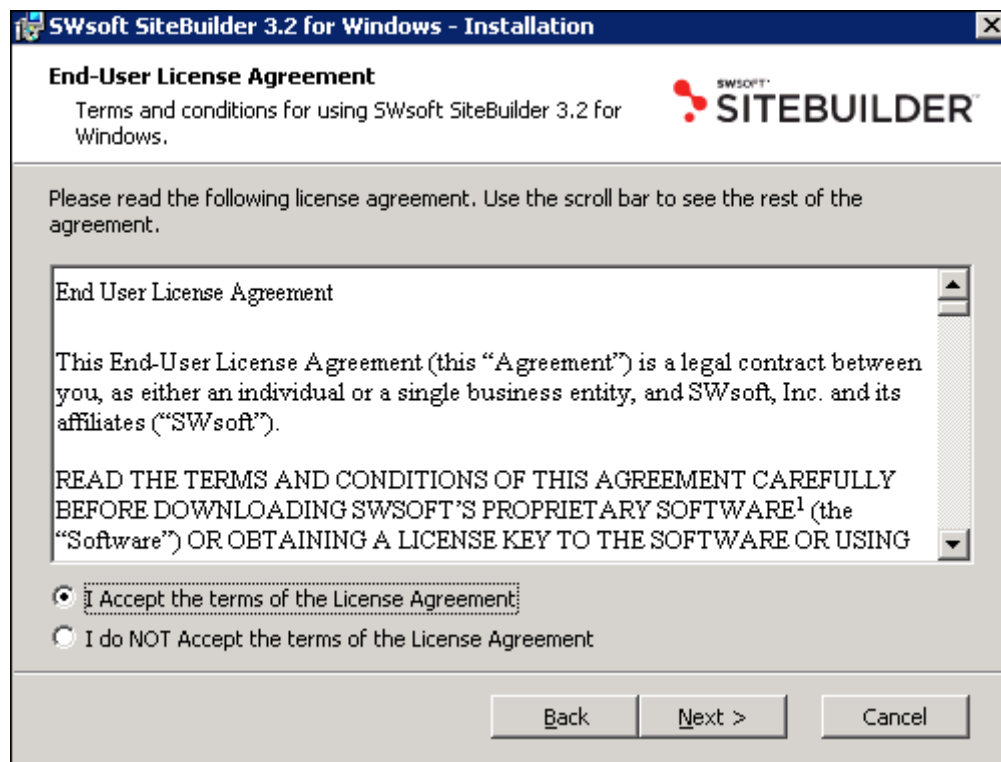


Figure 3: Viewing SiteBuilder License Agreement

- 9 If you agree with terms of the End User Agreement, select **I Accept the terms of the License Agreement** option and click **Next**.

The **Installation Type Selection** screen appears. Information about the installation types see in **Types of Installation** section later in this chapter (see page 18).

Selecting Type of Installation

There are two types of SiteBuilder installation:

- Typical installation (see page 19). This type of installation is recommended to users with a basic knowledge of computers. All data is installed automatically in the folder indicated by user.
- Custom installation (see page 20). During this installation a user can indicate the following:
 - Folders in the user's system, where SiteBuilder elements should be copied
 - SQL server parameters
 - Installation scenario
 - IIS web site parameters

Note: This type of installation better suits for users with the advanced computer knowledge.

Select the type of the installation on the **Installation Type Selection** screen and click **Next**.

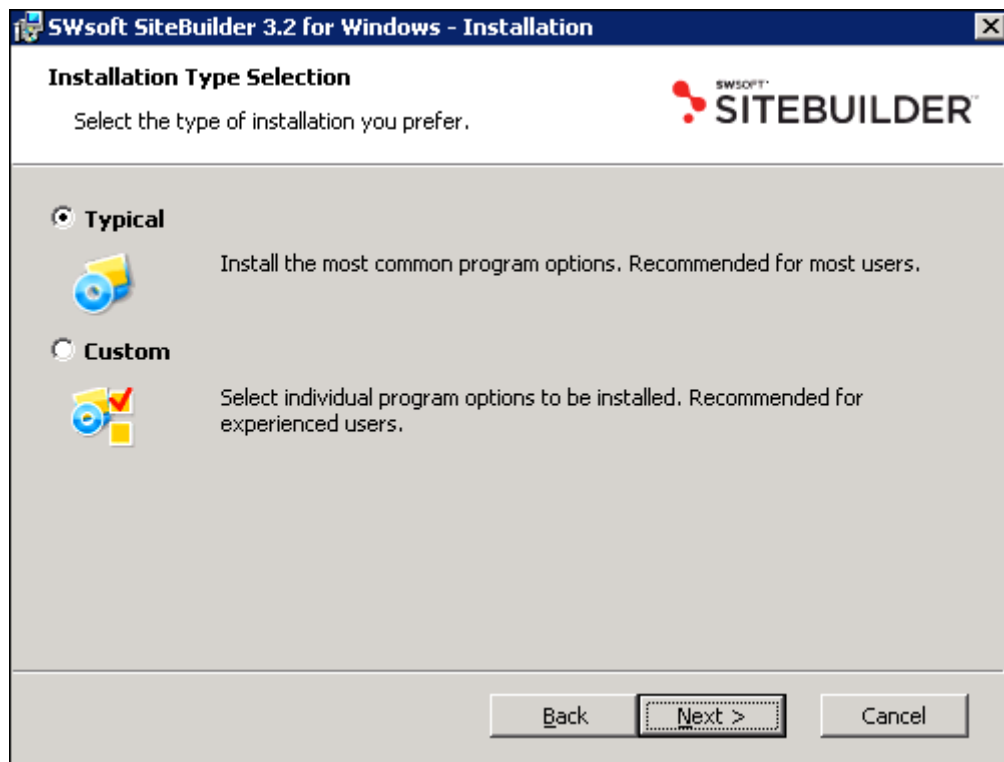


Figure 4: Selecting Type of Installation

Typical Installation

➤ *To launch typical installation:*

- 1 Select **Typical** on the **Installation Type Selection** screen and click **Next**.

The **Destination Folder Selection** screen appears.

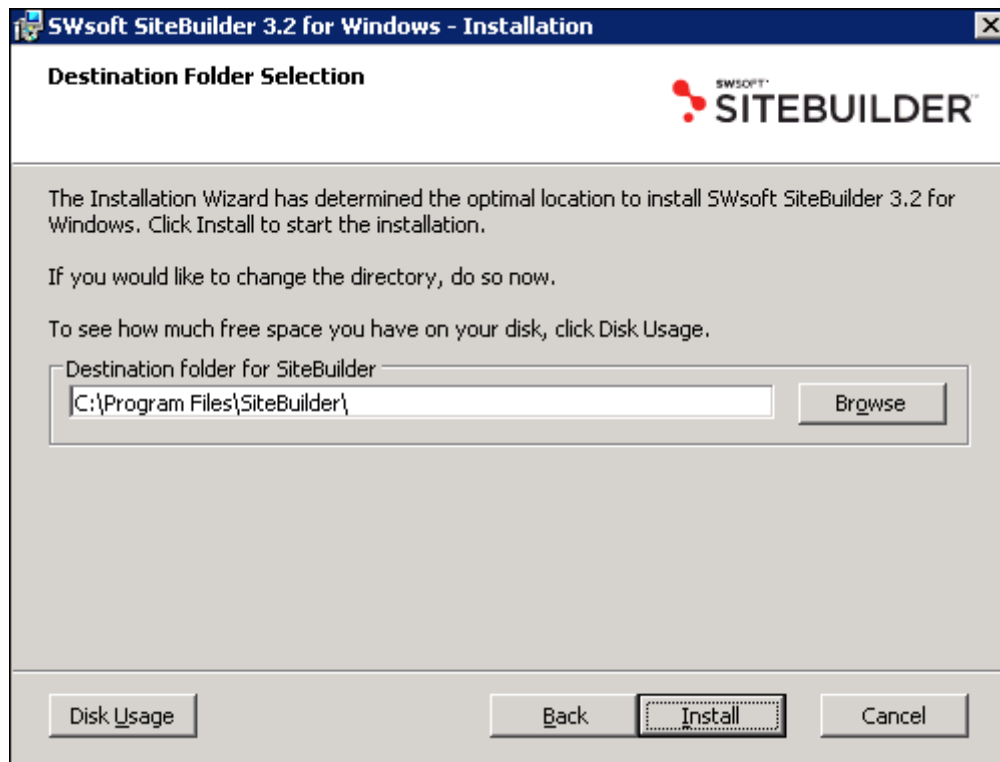


Figure 5: Selecting Destination Folder

- 2 To check how much available space you have on your disk, click **Disk Usage**.

The **Disk Space Requirements** screen appears, providing you with the following information about your hard disk:

- **Disk Size** is the total size of your hard disks.
- **Available** shows how much disk space is available at present.
- **Required** shows how much disk space is required for the SiteBuilder software to be installed.
- **Difference** is the difference between available disk space and required disk space.

- 3 Click **OK** to return to the **Destination Folder Selection** screen.

- 4 Indicate a folder that will contain SiteBuilder sub-folders and files.

Initially, the default folder will be displayed in the **Destination folder for SiteBuilder** field. To install SiteBuilder files into another folder, click **BROWSE** and select the folder you require.

- 5 Click **Install**.

SiteBuilder will be automatically installed in the specified folder. After the installation process is completed, the following screen is displayed.

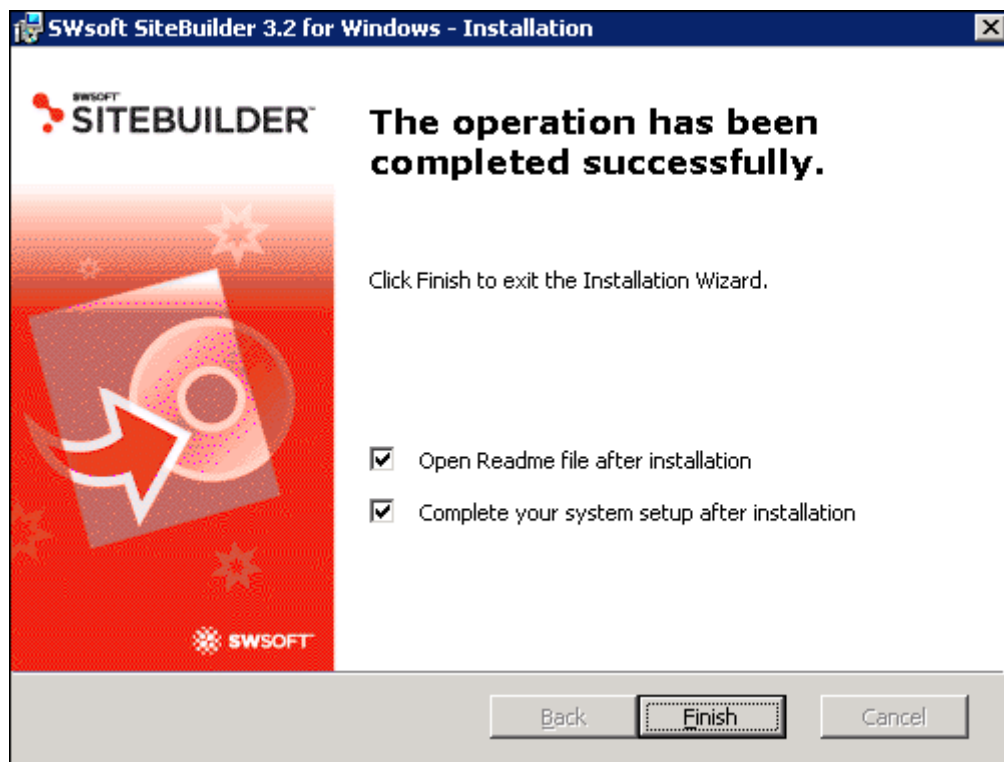


Figure 6: Completing SiteBuilder Installation

Before you exit the Installation Wizard, you can require to open the SiteBuilder `readme` file after the installation process is completed. Also you can select the **Complete your system setup after installation** check box. If you select this option then after you click **Finish**, the SiteBuilder registration form appears. In this form you can register your first administrator account. If you clear this check box and click **Finish**, the SiteBuilder Installation Wizard closes.

6 Click **Finish** to close the SiteBuilder Installation Wizard.

After the SiteBuilder installation is completed, the following shortcuts appear on your desktop and program menu:

- Shortcut to the SiteBuilder Administrator Panel
- Shortcut to the SiteBuilder Wizard

Custom Installation

If you click **Custom** on the **Installation Type Selection** screen, you initiate the custom SiteBuilder installation process. You should configure this installation process yourself. Following subsections describe this process in detail.

Selecting Destination Folders

On the Destination Folder Selection screen, you can select folders for storing the following SiteBuilder components:

- Core files are main SiteBuilder files
- Repository includes SiteBuilder components (modules, templates, etc.)
- Sites are folders containing sites data about trial sites created in SiteBuilder

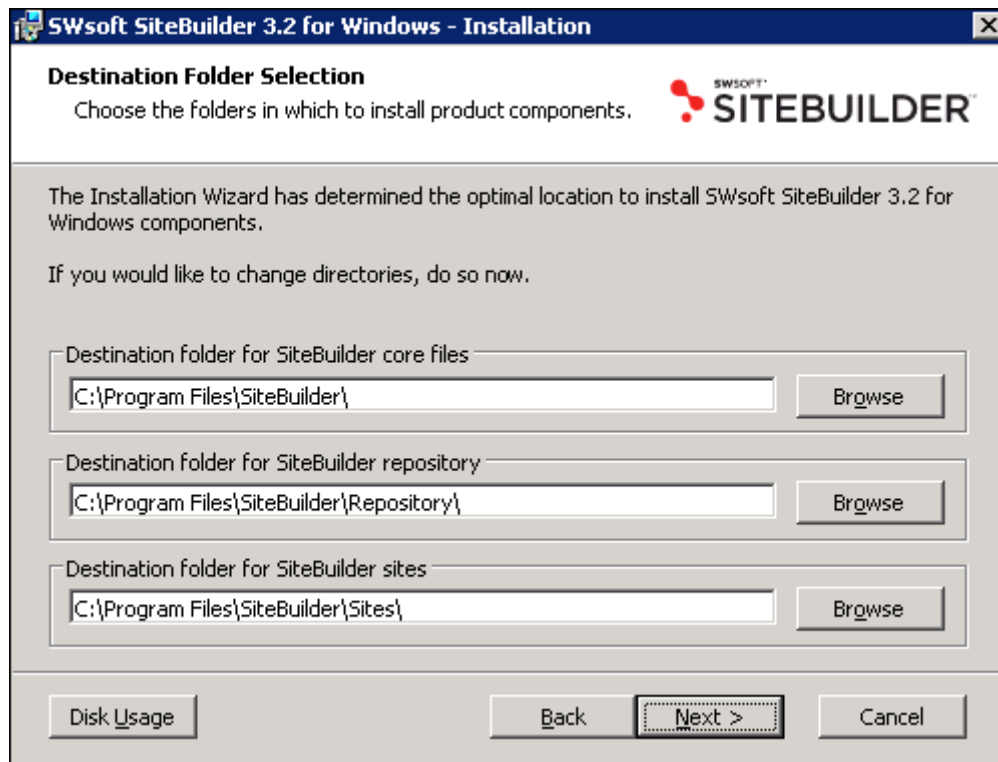


Figure 7: Selecting Destination Folders

- To select a destination folder for a certain SiteBuilder component:
- 1 Click **Browse** beside a corresponding field and select the folder.
 - 2 Click **Next**.

Selecting Shortcuts Location

- *To select where to install shortcuts to SiteBuilder:*
- 1 On the **Shortcuts Location** screen, select where to install the SiteBuilder for Windows shortcuts:
 - In the Program Menu
 - On your Desktop
 - 2 Click **Next**.

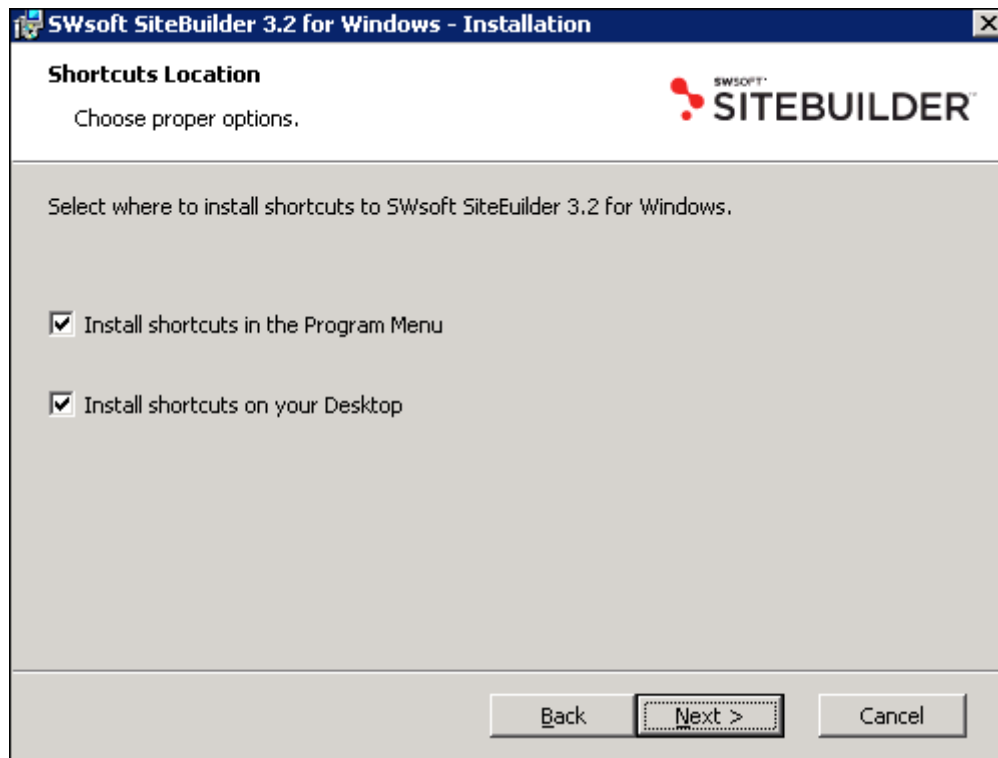


Figure 8: Selecting Shortcuts Location

Indicating SQL Server Parameters

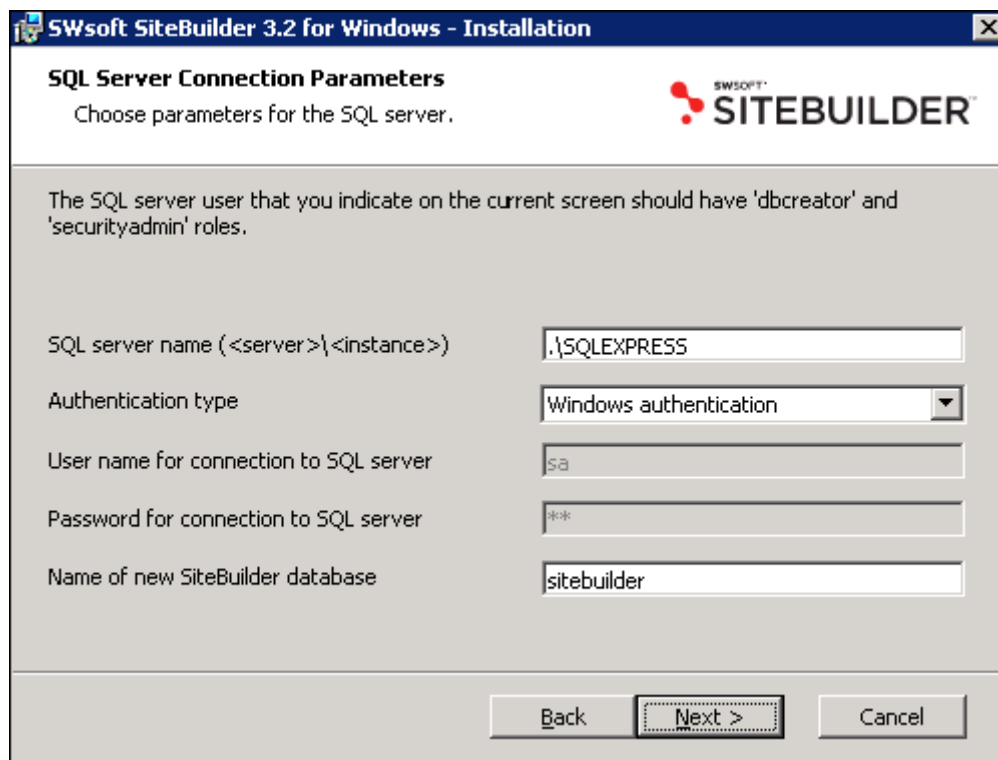
➤ *To configure SQL server connection parameters:*

- 1 Enter an SQL server name in the SQL server name field.
- 2 Select an authentication type:
 - If you select Windows authentication, the Username for connection to SQL server and the Password for connection to SQL server fields are grayed out.
 - If you select SQL server authentication, enter a username and password for connection to SQL server in the corresponding fields.
- 3 Enter a name of new SiteBuilder database in the Name of new SiteBuilder database field.

Note: 1) Your SQL server account will be used during the SiteBuilder installation only. After SiteBuilder is installed, it will create its own account on this SQL server.

2) If the database with the same name exists on your SQL server and you selected the Overwrite existing database check box, existing database will be deleted from your SQL Server and overwritten by the new database. If this checkbox will be left unselected, the installation process will be suspended and error message will be displayed.

- 4 Click Next.



The screenshot shows the 'SQL Server Connection Parameters' dialog box. The title bar reads 'SWsoft SiteBuilder 3.2 for Windows - Installation'. The main title is 'SQL Server Connection Parameters' with a subtitle 'Choose parameters for the SQL server.' and the 'SITEBUILDER' logo. A note states: 'The SQL server user that you indicate on the current screen should have 'dbcreator' and 'securityadmin' roles.' The form contains the following fields:

- SQL server name (<server>\<instance>): .\SQLEXPRESS
- Authentication type: Windows authentication (dropdown menu)
- User name for connection to SQL server: sa (disabled)
- Password for connection to SQL server: (disabled)
- Name of new SiteBuilder database: sitebuilder

At the bottom, there are three buttons: 'Back', 'Next >' (which is highlighted with a dashed border), and 'Cancel'.

Figure 9: Indicating SQL Server Connection Parameters

Selecting Installation Scenario

On the Installation Scenario Selection screen, you can select how to install SiteBuilder:

- If you want to create a new IIS web site for SiteBuilder, select the **New IIS web site** option and click **Next**. The **IIS Web Site Parameters** screen opens. For detailed information regarding this option, see **Providing IIS Web Site Parameters** (see page 25).
- If you want to choose an existing IIS web site for SiteBuilder, select the **Existing IIS web site** option and click **Next**. The **Selecting IIS Web Site** screen opens. For detailed information regarding this option, see **Selecting IIS Web Site** (see page 26).

Note: If there are no IIS sites in the system, the installation scenario automatically becomes **New IIS web site**.

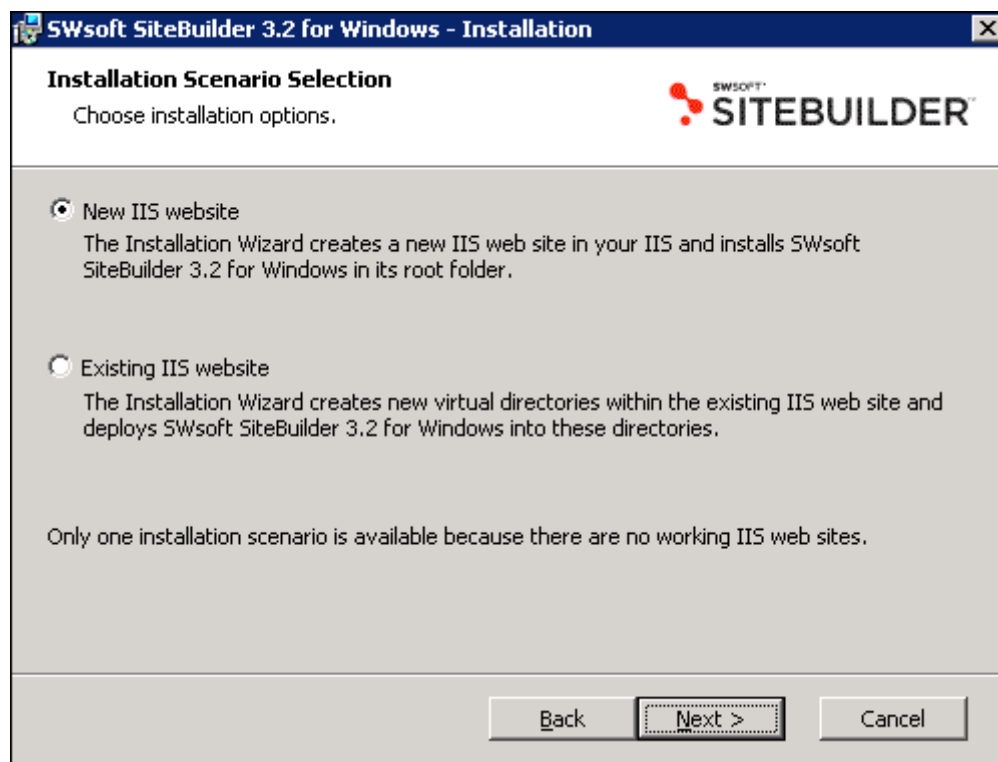


Figure 10: Selecting Installation Scenario

Note: If another application is installed in the existing IIS site root at the time of SiteBuilder installation, configuration of this application contained in the `web.config` file can conflict with the SiteBuilder settings that can lead to SiteBuilder crash. In order to avoid such situation, check `web.config` file of that application, and `web.config` file of your computer.

Providing IIS Web Site Parameters

When you select the **New IIS web site** scenario, the SiteBuilder Installation Wizard takes you to the **IIS Web Site Parameters** screen, where you can provide parameters for creation of a new IIS web site.

SWsoft SiteBuilder 3.2 for Windows - Installation

IIS Web Site Parameters
Specify parameters required to create a new IIS web site.

IIS web site name: SiteBuilder Web Site

HTTP port: 2006

Host headers:

IP address:

Important! Please make sure there is no IIS web site in your IIS with the same HTTP port, IP address and host headers. Otherwise, the installation ends with an error.

Back Next > Cancel

Figure 11: Providing IIS Web Site Parameters

➤ *To configure parameters required to create a new IIS web site:*

- 1 Enter a name of a new IIS web site in the **IIS web site name** field.
- 2 Enter an HTTP port for a new IIS web site in the **HTTP port** field.
- 3 Enter an IIS web site host header in the **Host headers** field.
- 4 Enter an IIS web site IP address in the **IP address** field.

Note:

1. Make sure that there is no IIS web site in your IIS with the same HTTP port, host headers, and IP address. If such site exists, your current SiteBuilder installation ends with an error.
 2. Make sure that no other application is used on the IIS site HTTP port. Otherwise, SiteBuilder software will not be installed in your system.
-

- 5 Click **Next**.

Selecting IIS Web Site

When you select the Existing IIS web site scenario, the SiteBuilder Installation Wizard takes you to the IIS Web Site Selection screen, where you can select an IIS site.

➤ *To launch installation according to the Existing IIS web site scenario:*

- 1 Select an IIS web site from the Existing IIS web site list.
- 2 If you require to install SiteBuilder in a new virtual directory of the existing IIS site, select the Create virtual directory check box and enter a name of this virtual directory.

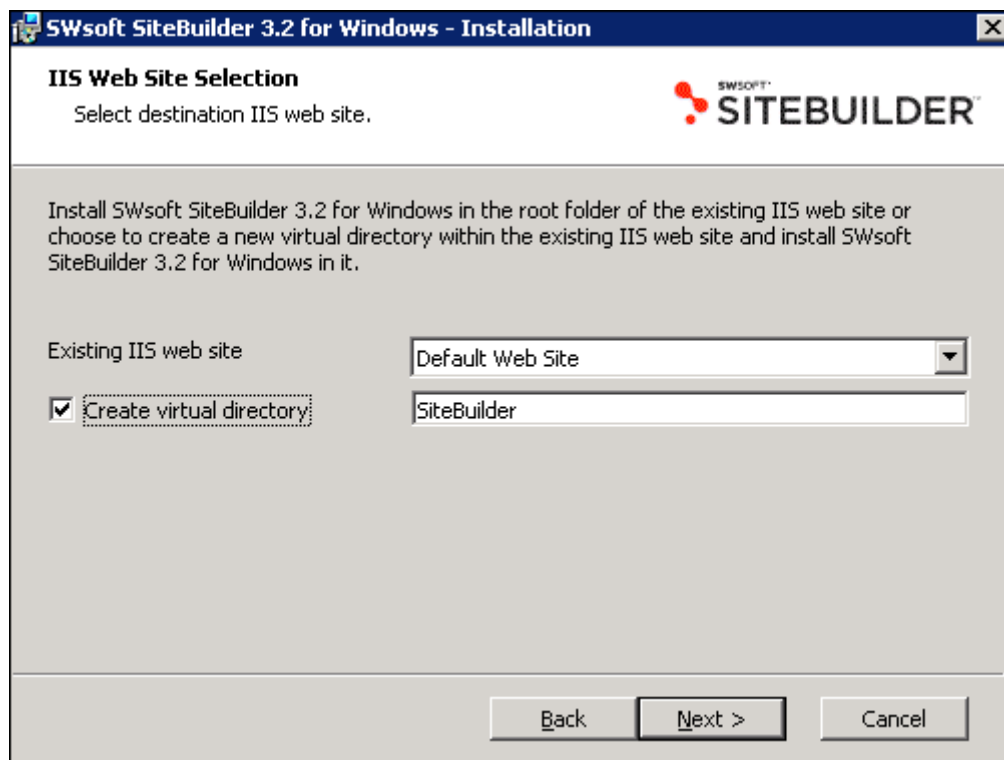


Figure 12: Selecting IIS Web Site

- 3 If you want to install SiteBuilder in the root folder of your existing IIS site, clear the Create virtual directory check box.
- 4 Click Next.

Installing SiteBuilder

Before launching the installation, read the information displayed on the **Ready to Install the Program** screen to make sure that all installation settings are specified correctly.

To initiate the SiteBuilder installation process, click **Install**.

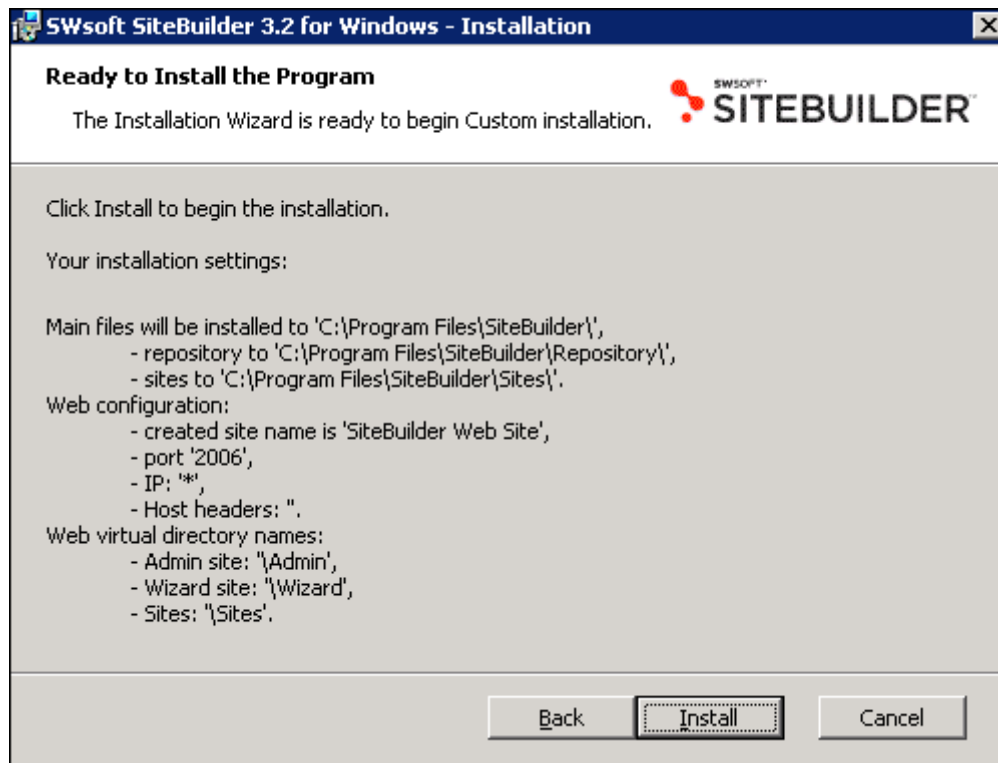


Figure 13: Launching Installation Process

Completing SiteBuilder Custom Installation

After the installation process is completed, the following screen is displayed.

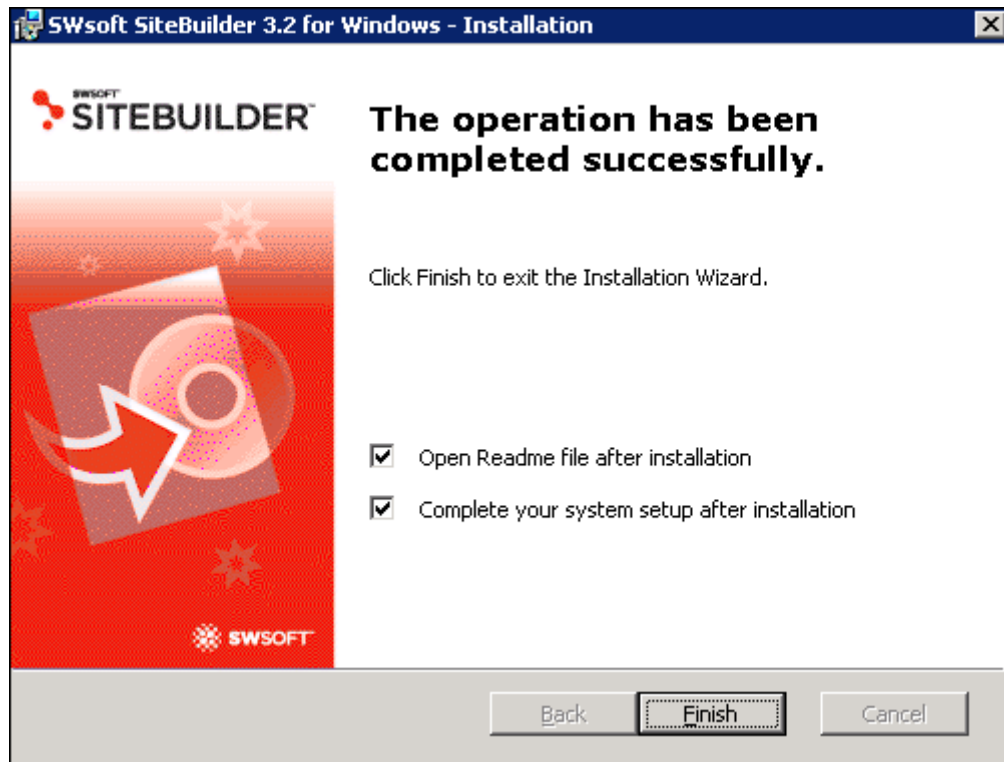


Figure 14: Completing SiteBuilder Installation

Before you click **Finish** and exit the Installation Wizard, you can require to open the SiteBuilder readme file after the installation process is completed.

Also you can select the **Complete your system setup after installation** check box. If you select this option then after you click **Finish**, the SiteBuilder registration form appears. In this form you can register your first administrator account. If you clear this check box and click **Finish**, the SiteBuilder Installation Wizard closes.

Installing Templates and Language Packages

After you install SiteBuilder, create your administrator account and register your copy of SiteBuilder. Now you can install additional templates and language packages.

➤ *To install the SiteBuilder templates and languages packages:*

- 1** Download the files with the desired packages from the SWsoft web site (<http://www.swsoft.com/>).
- 2** Launch the downloaded files.

The packages will be automatically installed on you computer.

Note: If the installed packages do not appear in the list of available SiteBuilder components, reload the IIS service by running the `iisreset` command in the command line interface.

Configuring IIS Security Settings

If you plan to use SiteBuilder web services, you should configure Internet Information Services (IIS) Web Site Security settings in order to access SiteBuilder web services from another computer. By default web services are allowed only from localhost.

Note: To prevent the unauthorized access to SiteBuilder web services, grant the access permissions only to the specific machines.

➤ *To configure IIS Web Site Security settings:*

- 1** Click **Start** in MS Windows 2003 Professional.
- 2** Click **Control Panel**.
- 3** Click **Administrative Tools**.
- 4** Click **Internet Information Services (IIS) Manager**.
- 5** In the **Internet Information Services (IIS) Manager**, click **Web Sites**.
- 6** Select the **SiteBuilder Web Site** folder. If you have installed SiteBuilder in any other virtual folder, select this folder.
- 7** Select the **Service Facade** folder.
- 8** Right click **Service Facade** folder to access its properties.
- 9** Click the **Directory Security** tab in the **Service Facade** properties.
- 10** Click **Edit** button in the **IP Address and Domain Name Restrictions** area.
- 11** Click **Add** in the **IP Address and Domain Name Restriction** dialog box.
- 12** Select **Single computer** option.
- 13** Enter the IP address of the computer from which you will be accessing SiteBuilder web services.
- 14** Click **OK**.

If you will have any questions regarding this procedure, click **Help** to read more help tips regarding IIS configuration.

CHAPTER 5

Removing SiteBuilder from Your System

There are instances where administrators may want to uninstall the SiteBuilder for Windows software. During the removal process, all the software elements copied are uninstalled from your computer and registry. It may be necessary for you to remove the software, if, for example, you need to move the SiteBuilder elements to another computer. Few elements that remain after such removal process are described in **Remaining Data** later in this chapter (see page 34).

In This Chapter

Removing SiteBuilder Using MS Windows Interface	31
Removing SiteBuilder Using SiteBuilder Installation Wizard.....	32
Remaining Data.....	34

Removing SiteBuilder Using MS Windows Interface

Note: After you remove SiteBuilder, all the language packages and template packages will be also removed.

➤ *To remove SiteBuilder using MS Windows interface:*

- 1 Open the MS Windows Control Panel.
- 2 Click **Add/Remove Programs**.
- 3 Click **Remove** next to the SiteBuilder software icon.
- 4 Click **Yes** when the **Add/Remove Programs** application asks you "Are you sure you want to remove this software?".
MS Windows automatically removes the SiteBuilder data from your system.
- 5 Click **Close**.

Removing SiteBuilder Using SiteBuilder Installation Wizard

Note: After you remove SiteBuilder, all the language packages and template packages will be also removed.

➤ *To remove SiteBuilder with the help of SiteBuilder Installation Wizard:*

- 1 Open the MS Windows Control Panel.
- 2 Click Add/Remove Programs.
- 3 Click Change beside the SiteBuilder icon.

The following screen opens.



Figure 15: Removing SiteBuilder, Welcome Screen

- 4 Click Next.

The Program Maintenance screen opens.

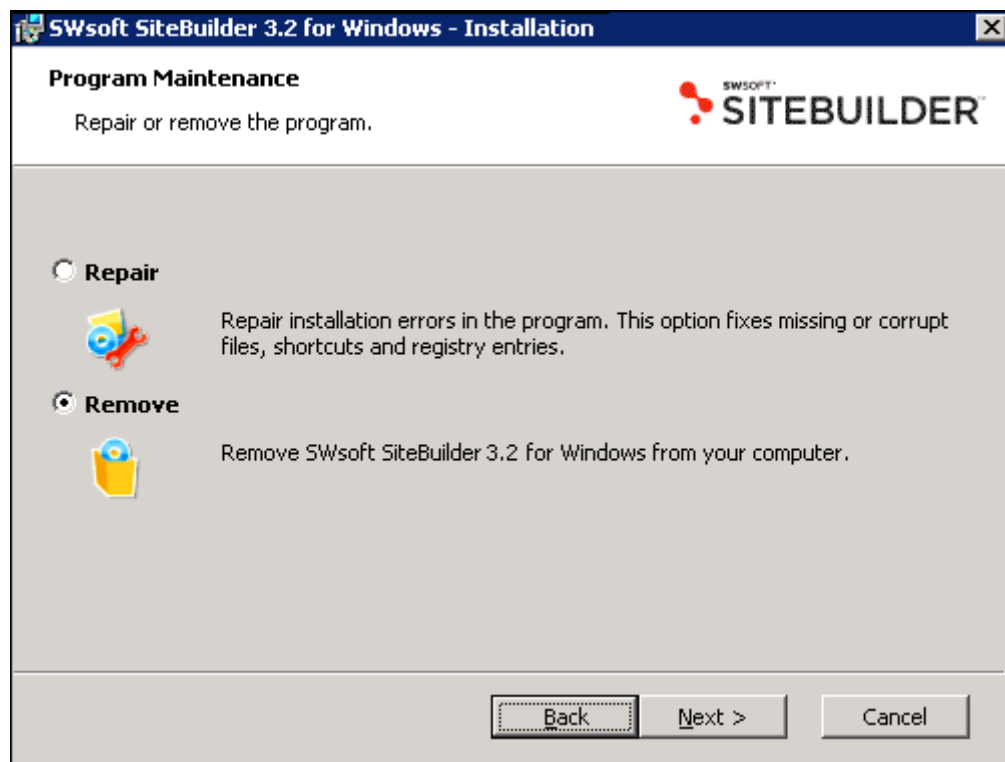


Figure 16: Selecting Removal Operation

- 5 Select the **Remove** option and click **Next**.

The SWsoft SiteBuilder 3.2 for Windows Removal screen opens.

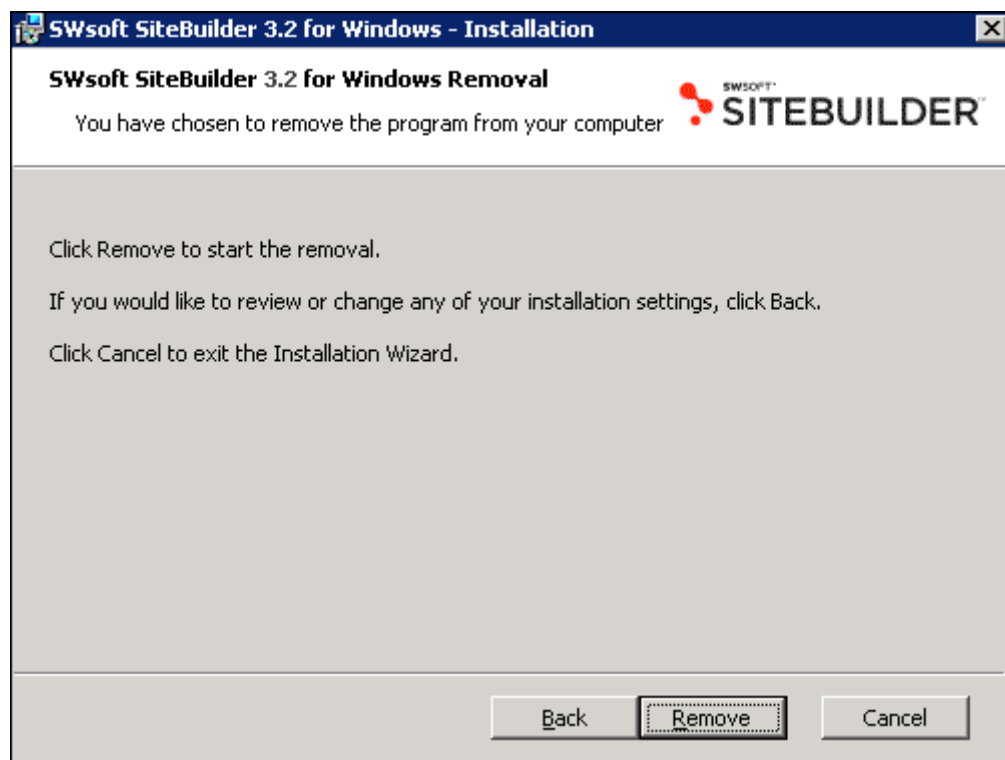


Figure 17: Launching Removal Process

6 Click Remove.

After SiteBuilder elements are removed from your system, the screen below is displayed.



Figure 18: Completing Removal Operation

7 Click Finish.

Remaining Data

After the SiteBuilder removal process is completed, the following elements copied to your system during the SiteBuilder installation remain in the system:

- SiteBuilder operation logs.
- Trial and regular sites created in your copy of SiteBuilder.
- Additional programs that the SiteBuilder Installation Wizard might have copied to your system during the installation process, such as:
 - MS framework.net 2.0
 - MS SQL Server 2005 Express Edition
 - MDAC 2.8
 - Windows Installer 3.1

CHAPTER 6

Repairing SiteBuilder

Besides removing SiteBuilder from your system, you can also initiate the SiteBuilder repair process. This repair process is useful in several cases, for example:

- If one or several SiteBuilder files copied to your computer during the SiteBuilder installation were removed.
- If shortcuts to the SiteBuilder Administrator Panel or Wizard were removed from your desktop.

During the repair process, the SiteBuilder Installation Wizard checks your system for SiteBuilder data and copies SiteBuilder elements if they are found as missing from the system.

➤ *To repair SiteBuilder:*

- 1 Go to the MS Windows Control Panel.
- 2 Launch the Add/Remove Programs application.
- 3 Click **Change** beside the SiteBuilder icon.

The following screen opens.



Figure 19: Repairing SiteBuilder, Welcome Screen

- 4 Click **Next**.

The following screen opens.

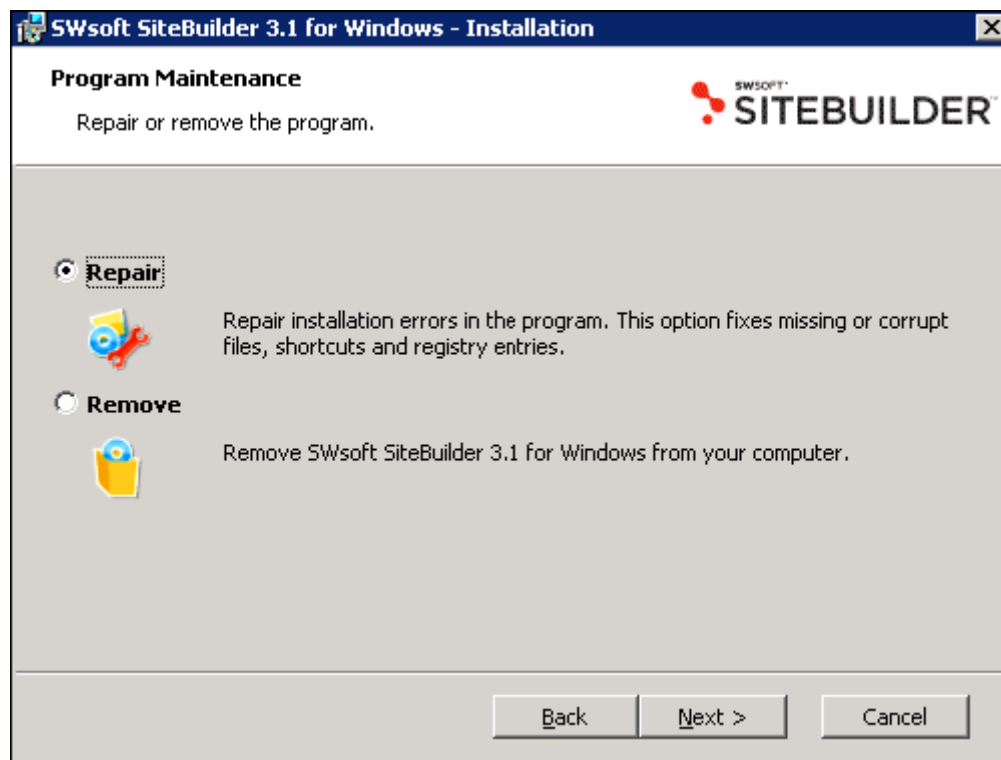


Figure 20: Selecting Repair Operation

5 Select the Repair option and click Next.

The following screen opens.

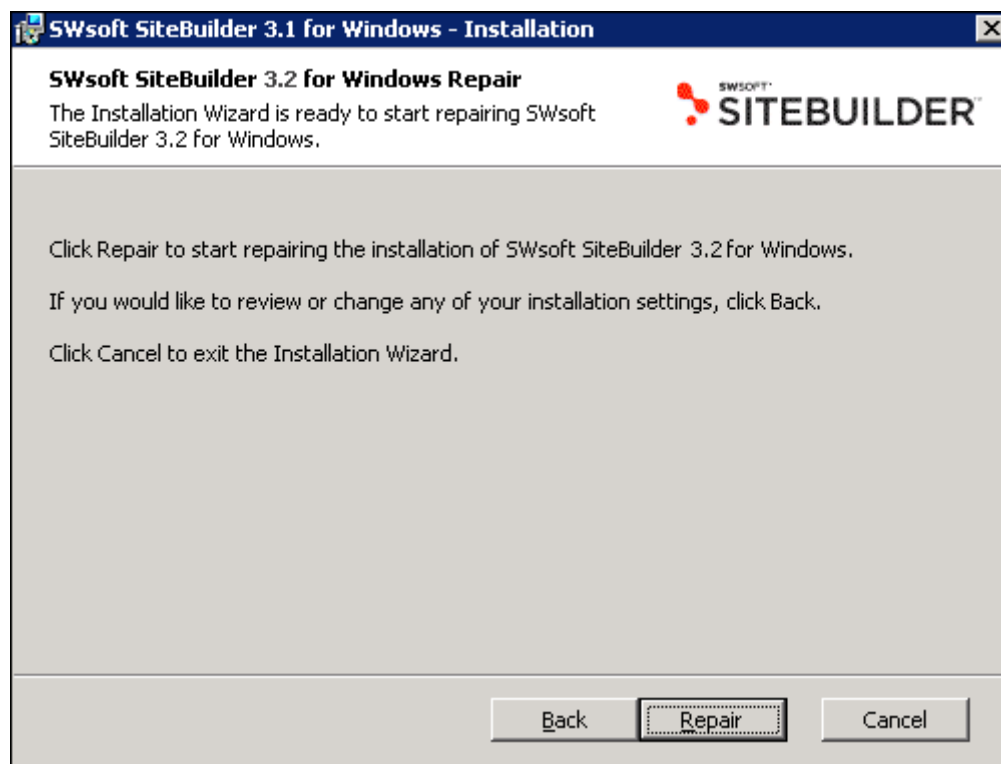


Figure 21: Launching Repair Process

6 Click Repair.

The repair process is automatic. SiteBuilder informs you about its progress in the Status line displayed on the Repairing SiteBuilder screen. After the repair process is completed, the following screen opens.



Figure 22: Completing Repair Operation

7 Click Finish.

CHAPTER 7

Upgrading SiteBuilder

This chapter describes the ways you can upgrade your SiteBuilder version.

In This Chapter

Migrating from SiteBuilder 2.0.5 to SiteBuilder 3.2.....	38
Upgrading SiteBuilder 3.0 to SiteBuilder 3.2	41

Migrating from SiteBuilder 2.0.5 to SiteBuilder 3.2

Migration from SiteBuilder 2.0.5 for Windows to SiteBuilder 3.2 for Windows is initiated by the SiteBuilder Migration Utility. This utility is contained in the SiteBuilder 3.2 for Windows Installation Wizard bundle.

Note: Prior to migration, it is necessary to backup SiteBuilder 2.0.5 for Windows and SiteBuilder 3.2 for Windows installations, including databases, file repositories of sites, etc.

This section provides the following information regarding the migration process:

- Initial conditions for migration procedure (see page 38)
- Scheme of migration procedure (see page 39)
- General rules for migration procedure (see page 39)
- Description of user account transfer (see page 39)
- Description of site transfer (see page 40)
- The list of migration process limitations (see page 40)

Initial Conditions

The following initial conditions should be met in order for the migration procedure to be successful:

- Fully installed SiteBuilder 2.0.5 for Windows (including full configuration of database and root)
- Fully installed SiteBuilder 3.2 for Windows (including fully completed configuration of administrator account and SiteBuilder registered License)

Migration Scheme

Migration Utility transforms and adds the contents of SiteBuilder 2.0.5 for Windows database, including file repository of sites and other data not stored in MSSQL to SiteBuilder 3.2 for Windows program.

The global settings, settings of existing users in SiteBuilder 3.2 for Windows, site settings, or other SiteBuilder settings are not re-configured.

Migration General Rules

There are two general rules for successful process:

- If Migration Utility fails to create a user account, site or any other SiteBuilder 3.2 for Windows entity, the warning message is displayed and the migration procedure of this entity and entities connected with it is terminated.
- If there are no corresponding values for some of the migrating parameters and settings of entities (such as: locale, skin, template and etc.) in SiteBuilder 2.0.5 for Windows, the default values are set for these parameters and settings in SiteBuilder 3.2 for Windows.

Transferring User Accounts

For each administrator and reseller account (except administrator root account) presented in SiteBuilder 2.0.5 for Windows the corresponding accounts with the same settings are created in SiteBuilder 3.2 for Windows.

Also for each regular site presented in SiteBuilder 2.0.5 for Windows SiteBuilder 3.2 for Windows creates site owner account. During this transfer process the site titles of SiteBuilder 2.0.5 for Windows sites become names of the corresponding site owners accounts in SiteBuilder 3.2 for Windows. E-mail notification address contained in the SiteBuilder 2.0.5 for Windows user account becomes the e-mail address in the site owner account in SiteBuilder 3.2 for Windows. E-mail address transfers are done this way because in SiteBuilder 2.0.5 for Windows different user accounts can have the same e-mail addresses, but in SiteBuilder 3.2 for Windows such occurrences are prohibited. If SiteBuilder 3.2 for Windows finds several user accounts presented in SiteBuilder 2.0.5 for Windows and containing the same e-mail addresses, this e-mail address is set as the e-mail address of the first site account transferred to SiteBuilder 3.2 for Windows, but for the rest of the user accounts the program generates new e-mail addresses.

User passwords for SiteBuilder 3.2 for Windows are generated randomly and stored in the `new_users_pwd` file, also containing user logins and e-mail addresses. The SiteBuilder administrator can send out new passwords and logins to users, who migrated to SiteBuilder 3.2 for Windows, using the data contained in `new_users_pwd`.

Transferring Sites

During the SiteBuilder migration procedure the sites are transferred according to the following scheme:

Reseller has trial and regular sites in SiteBuilder 2.0.5 for Windows. During the site transfer, trial sites are assigned to this reseller, but regular sites are assigned to newly created site owners accounts (see **Transferring User Account** section earlier in this chapter (see page 39)), dependent to that reseller.

Limitations of Migration Procedure

The content and structure of the transferred sites are copied with the following limitations:

- The module content migration is not supported during the transfer. Instead of modules, SiteBuilder 3.2 for Windows inserts the placeholders with messages and module names.
- It may be necessary to do some additional manual correction work on some of the references since the find/replace scheme of `src-` and `href-` references on the pages is based on the simple and regular expressions. Only `src-` and `href-` of regular attributes are replaced automatically, but for scripts and other elements, this replacement is not supported.
- Plans are transferred to SiteBuilder 3.2 for Windows without attributes which present only in the previous version of the program.
- The templates and modules, included in SiteBuilder 2.0.5 for Windows Plans, but not included in SiteBuilder 3.2 for Windows are ignored during transfer. If the elements, included in the SiteBuilder 2.0.5 for Windows Plan, do not correspond with SiteBuilder 3.2 for Windows elements completely, then SiteBuilder 3.2 for Windows Plan may include default limits, License limits, or limits contained in the “parents” Plan.

Note: During the host transfer, for the SiteBuilder 2.0.5 for Windows hosts, containing the range of hosts, one new host is created per one IP address of this range.

Upgrading SiteBuilder 3.0 to SiteBuilder 3.2

You can upgrade SiteBuilder 3.0 to SiteBuilder 3.2 using the SiteBuilder Installation Wizard. Remember that when you upgrade SiteBuilder, all SiteBuilder 3.0 templates and language packages are removed from your computer.

➤ *To upgrade SiteBuilder:*

- 1 Download the SiteBuilder 3.2 Installation Wizard bundle from the SWsoft web site (<http://www.swsoft.com/>).
- 2 Open your Windows Explorer.
- 3 Go to the folder where you have downloaded the SiteBuilder Installation Wizard bundle.
- 4 Launch the `sitebuilder4win_3.2.0_build060721.1xx.exe` file.

The Welcome to the Installation Wizard screen appears.



Figure 23: Upgrading SiteBuilder, Welcome Screen

- 5 Click Next.

The End-User License Agreement screen appears.

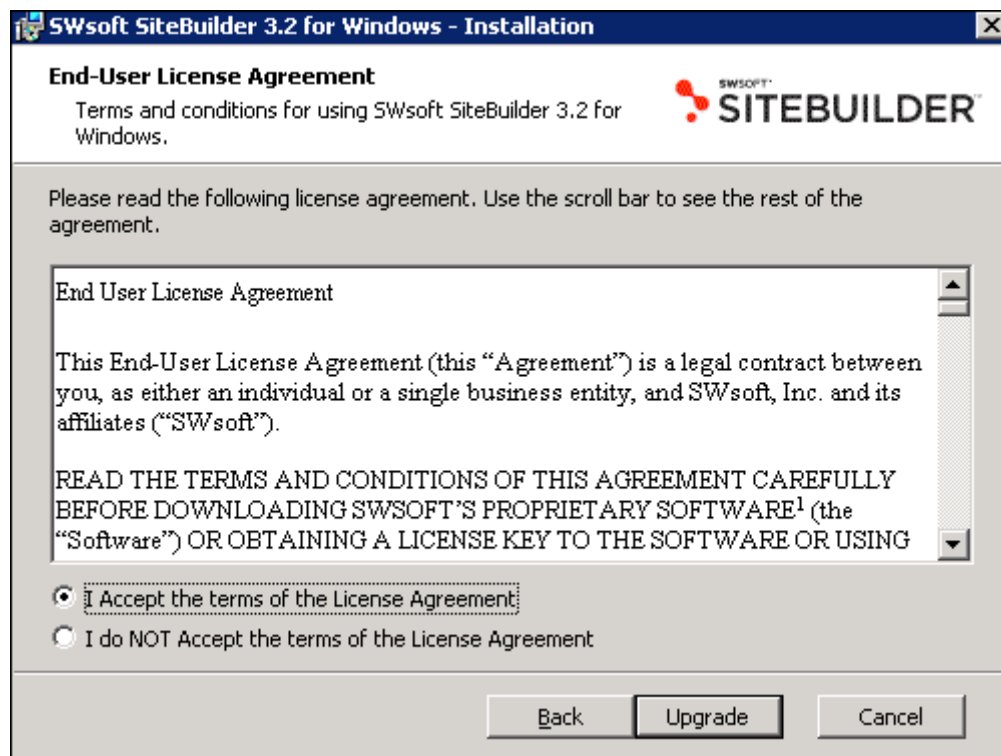


Figure 24: Launching Upgrade Process

- 6 Select the I Accept the terms of the License Agreement option and click Upgrade. After the upgrade process is completed, the following screen appears.

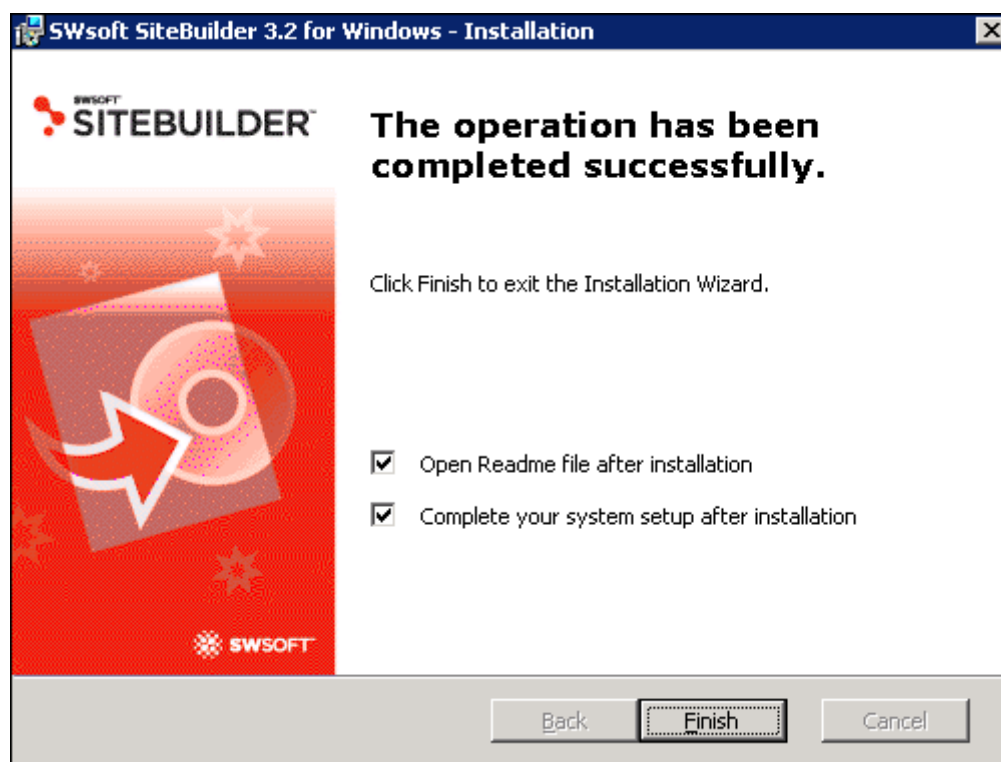


Figure 25: Completing Upgrade Operation

Before you click **Finish** and exit the Installation Wizard, you can require to open the SiteBuilder readme file after the installation process is completed.

Also you can select the **Complete your system setup after installation** check box. If you select this option then after you click **Finish**, the SiteBuilder registration form appears. In this form you can register your first administrator account. If you clear this check box and click **Finish**, the SiteBuilder Installation Wizard closes.

7 Click Finish.

Note: After you complete the upgrade process, create your administrator account and register your copy of SiteBuilder.

CHAPTER 8

Clustering Installation

In This Chapter

Overview	45
Installation Walkthrough.....	47
Appendix	50

Overview

Logical Architecture

SiteBuilder is based on layered architecture and supports several deployment scenarios in which system components may be distributed on multiple physical tiers. In terms of application deployment components are grouped into logical tiers which forms the deployment units. As shown in Figure 1, multi-tiered deployment architecture consists of Data, Storage and Application tiers.

Data Tier

Data tier consists of SQL Server database, which stores application business entities such as user accounts, sites and system settings.

Storage Tier

Storage tier consists of file-based Repository components providing persistence service for user sites and their building blocks such as design templates, page sets and modules.

Application Tier

Application tier is composed of Web-based front-end application and Windows Service that are integrated with Internet Information Services (IIS). Web application provides user interface (UI) for the end users and system administrators and also exposes several Web Services for integration and remote administration. Preview hosting service provides design time IIS hosting for the user web sites and manages their life time.

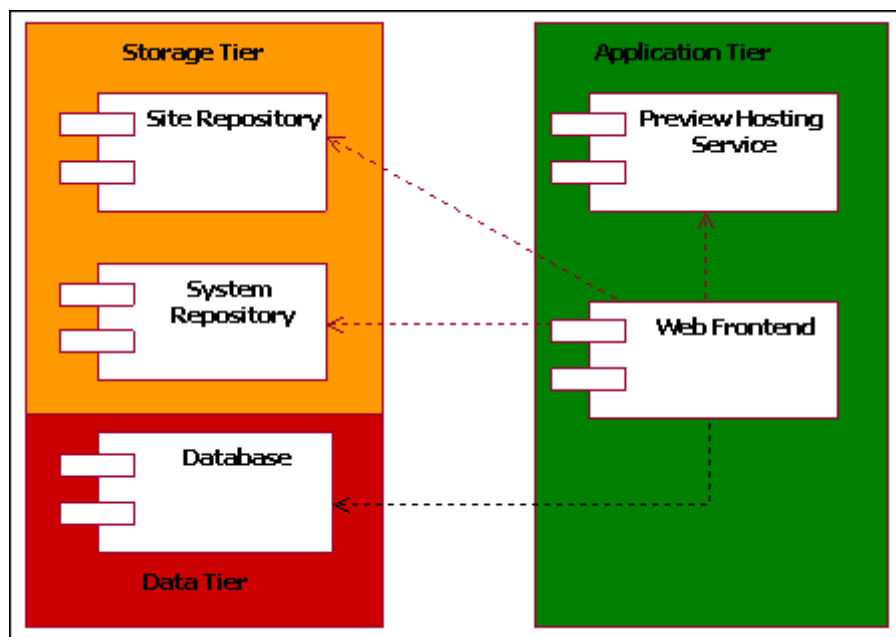


Figure 26: Application components

Deployment Architecture

You can install the logical tiers of the SiteBuilder server on one or more physical computers. In the context of this guide we will consider multi server deployment. Figure 2 shows typical implementation of Web Farm based on Network Load Balancing (NLB) clusters. For details of how to implement NLB cluster, see the deployment guide at [Microsoft web site](http://technet2.microsoft.com/WindowsServer/en/Library/e1aaa9e3-1e8d-408f-b00d-7de6521c00251033.msp?mfr=true) (<http://technet2.microsoft.com/WindowsServer/en/Library/e1aaa9e3-1e8d-408f-b00d-7de6521c00251033.msp?mfr=true>). Additional details regarding IIS scalability with Network Load Balancing may be found at [Microsoft web site](http://technet2.microsoft.com/WindowsServer/en/library/c40f7f5b-7d8c-48d9-81d0-dfcfa2fafa6b1033.msp?mfr=true) (<http://technet2.microsoft.com/WindowsServer/en/library/c40f7f5b-7d8c-48d9-81d0-dfcfa2fafa6b1033.msp?mfr=true>).

Web farm network segment represents NLB cluster consisting of two or more computers with NLB enabled network adapters. Application tier should be deployed on each web farm server which is part of virtual SiteBuilder cluster (within a single physical cluster there might be several virtual clusters distinguished by cluster address).

Important: NLB cluster should be configured to use a single client affinity to guaranty correct operations of SiteBuilder application tier components.

Storage and Data tiers reside within the private LAN segment. They might be deployed to storage and database servers correspondingly or installed on one computer. Though from the beginning it might be enough to have a single server with RAID 5 disk system for both storage and database tiers, it's recommended to deploy these tiers to different computers in order to be able to scale out the machines independently on demand to load growth.

To increase availability of the storage server, you may install the storage tier on several machines and then setup Distributed File System (DFS) with File Replication Service (FRS). If you decide to do so, you should manually configure DFS and FRS services; for details, see the guide at [Microsoft web site](http://technet2.microsoft.com/WindowsServer/en/library/42befce4-7c15-4306-8edc-a80b8c57c67d1033.msp?mfr=true) (<http://technet2.microsoft.com/WindowsServer/en/library/42befce4-7c15-4306-8edc-a80b8c57c67d1033.msp?mfr=true>).

To increase availability of the database server, you may implement failover SQL Server 2005 cluster; for details, see the guide at [Microsoft web site](http://msdn2.microsoft.com/en-us/library/ms179530.aspx) (<http://msdn2.microsoft.com/en-us/library/ms179530.aspx>).

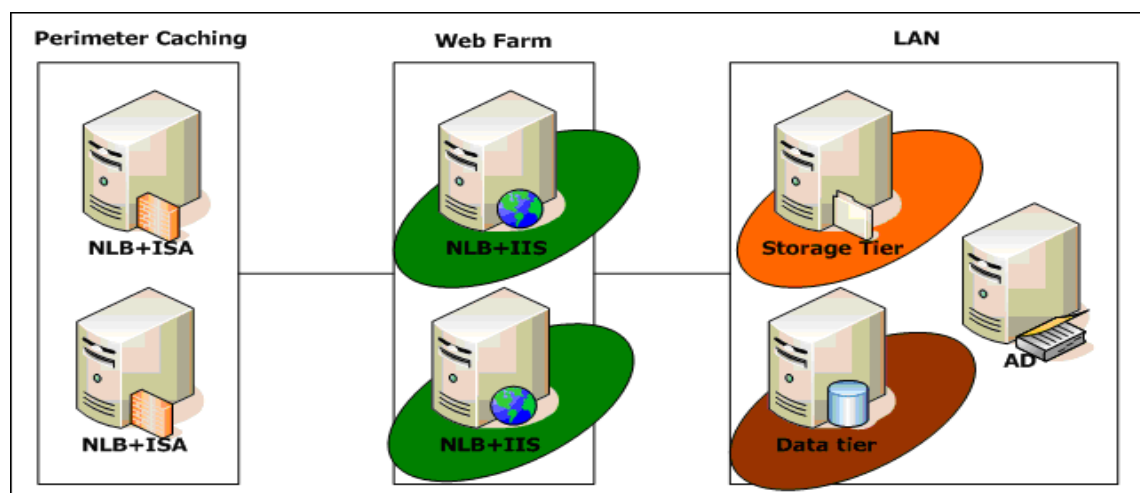


Figure 27: Web Farm

Installation Walkthrough

SiteBuilder components should be installed in a certain order. First you should prepare the database server and then install the storage tier components; SiteBuilder database is deployed as a part of the storage tier components installation. After you have completed the storage tier installation you are ready to deploy the application tier components to multiple nodes of SiteBuilder NLB cluster.

Prerequisites

- Active Directory domain.

To set up and configure a SiteBuilder Server in NLB cluster environment, you should use computers that are joined to an Active Directory domain.

- NLB cluster.

It's recommended to complete NLB cluster setup with at least one host before SiteBuilder installation.

- Two service accounts in the scope of AD for SiteBuilder server.

One account will be used for the web application pool identity (Worker Process Account), the second one - for previewing hosting windows service.

- A user account for completing setup that is a member of the **Administrator** security group on application and storage server computers.
- SQL server login having SA rights or at least **DBCcreator** and **SecurityAdmin** rights.

Application server software requirements

- Windows Server 2003 Enterprise or Datacenter edition
- Internet Information Services (IIS) 6.0
- .Net framework runtime 2.0

Storage server software requirements

- Windows Server 2003/2000 any edition
- .Net framework runtime 2.0

Database server software requirements

- Windows Server 2003/2000 any edition
- Microsoft SQL Server 2000/2005 any edition

Installing SiteBuilder Server

➤ *To install the storage tier components:*

- 1 Install and complete prerequisites for the storage server computer.
 - Ensure that the computer is a member of Active Directory domain.
 - Install Microsoft .Net Framework 2.0 runtime.
 - Obtain two domain user accounts, see Prerequisites section.
- 2 Create batch file for launching storage tier installer
(for complete parameters reference, see **Appendix** (see page 50)).
 - Set /q**b** - use basic GUI.
 - Set CLUSTER_INSTALLATION_TYPE=1.
 - Define SQL server connection parameters: SQLSRVER, SQLWINAUTH, SQLUSER and SQLPWD.
 - Define service accounts' parameters: SBWPA_USER, SBSERVICE_USER.
 - Define CLUSTER_ADDRESS parameter.
 - Optionally define INSTALLDIR_SB parameter to specify installation folder.
- 3 Launch installation using created batch file.

Sample batch file

```
SBInst.msi /qb CLUSTER_INSTALLATION_TYPE=1
SQLSERVER="tcp:dataserver,1433" SQLUSER=sa SQLPWD=sa
SQLWINAUTH=false SB_DOMAIN=vmfarm SBWPA_USER="sbwpa"
SBSERVICE_USER="sbsevice" CLUSTER_ADDRESS=cluster.domain.com
```

SiteBuilder storage-tier installer creates new file share named SiteBuilder, prepares `install_application_node.bat` batch file, and several additional files necessary to run application-tier installation, within the folder named `Installer`.

Use the batch file created by the Installer to run application tier installation.

➤ *To install the application-tier components:*

- 1 Install and complete prerequisites for the application tier computer.
 - Ensure that the computer is a member of Active Directory domain.
 - Install Internet Information Services (IIS) 6.0.
 - Install Microsoft .Net Framework 2.0 runtime.
- 2 Launch `install_application_node.bat` batch file from command line with passwords for user accounts as parameters. Example:

```
install_application_node.bat sqlPwd wpaPwd servicePwd
```

➤ *To install a language pack:*

A language pack should be deployed on the storage and application tiers. First you should install the language pack to the storage tier and then install on each node in the application tier.

Note: 1) The same language packs have to be deployed across all nodes in application tier.

2) You may see new languages in the admin panel\server\languages list, but users will not be able to use new languages until completion of the SiteBuilder installation registration procedure.

➤ *To install a template pack:*

A template pack should be installed on the data tier only. To install the template pack launch installer on the data tier machine. It will check SiteBuilder installation presence, extracts the templates' files and register them within the SiteBuilder database. After installation you may add new templates to the users' plans as necessary.

Appendix

Installer parameters for unattended installation

Parameter	Possible Values	Required	Description
INSTALLDIR_SB	Full path	No	Install folder for main product files.
INSTALLDIR_REP	Full path	No	Install folder for System Repository. Not used for clustering installation.
INSTALLDIR_SITES	Full path	No	Folder for user's sites storage. Not used for clustering installation.
INSTALLSCENARIO	1 2	No	Install scenario (default 1): 1 – install product into new Web Site 2 – install product into existing Web Site
WEBSITESERVERCOMMENT	string	No	Name to locate existing Web site (second scenario).
WEBSITEPORT	Number 0 - 65534	No	Listening Port; used to configure the existing Web Site (second scenario).
WEBSITEIP	IP *	No	Listening IP address; used to configure the existing Web Site (second scenario).
WEBSITEHH	string	No	Host headers; used to configure the existing Web Site (second scenario).
CREATEDWEBSITESERVERCOMMENT	string	No	Name of the new Web site (first scenario).
CREATEDWEBSITEPORT	Number 0 - 65534	No	Listening Port; used to configure the new Web Site (first scenario).
CREATEDWEBSITEIP	IP *	No	Listening IP address; used to configure the new Web Site (first scenario).
CREATEDWEBSITEHH	string	No	Host headers; used to configure the new Web Site (first scenario).
SBVDNAME	string	No	Virtual directory under Web site to install web application; leave blank to install into web site root.

Parameter	Possible Values	Required	Description
VDCREATE	1 0	No	Flag to force virtual directory creation, if it does not exist.
SQLSERVER	string	Yes	SQL Server name to connect to for database deployment.
SQLUSER	string	No	User name for SQL Server connection (install time only). Ignored when SQLWINAUTH = "1"
SQLPWD	string	No	User password for SQL Server connection (install time only). Ignored when SQLWINAUTH = "1"
SQLWINAUTH	1 0	Yes	Flag to use Integrated Windows Authentication for SQL Server connection. When this flag is set on, installer will connect to SQL Server under identity of currently logged in user and further on configure SiteBuilder to use Integrated Windows Authentication (grant rights to access SiteBuilder database to the Network Service or SBWPA_USER in case specified).
DBNAME	string	No	Database name.
INSTALL_DESKTOP_SHORTCUTS	1 0	No	Flag to install desktop shortcuts.
INSTALL_PMENU_SHORTCUTS	1 0	No	Flag to install program menu files shortcuts.
WSB_USER	string	No	User name for SiteBuilder administrator account to create during the installation process. If blank or not set, SiteBuilder will show registration form to create administrator account on first request to application.
WSB_USER_PWD	string	No	User password for SiteBuilder administrator account created during the installation process.

Parameter	Possible Values	Required	Description
CLUSTER_INSTALLATION_TYPE	0 1 2	Yes	Cluster installation node type: 0 – Single server (default) 1 – Storage tier 2 – Application tier
CLUSTER_FILESERVER_NETWORK_PATH	string	No	Storage tier server NetBIOS name or IP. Example: \\fs.domain.com
CLUSTER_ADDRESS	string	Yes	Cluster address; IP or domain name.
SB_DOMAIN	string	Yes	NetBIOS domain name for process accounts defined below.
SBWPA_USER	string	Yes	User name for SiteBuilder worker process account (Web App pool identity).
SBWPA_PWD	string	Yes	Password for SiteBuilder worker process account.
SBSERVICE_USER	string	Yes	User name to run SiteBuilder hosting service process.
SBSERVICE_PWD	string	Yes	Password for service process account.

Index

A

About SiteBuilder • 9
About SiteBuilder Installation Wizard • 11
About This Guide • 6
Appendix • 52

C

Clustering Installation • 44
Completing SiteBuilder Custom Installation • 28
Components Installed During Installation Process • 13
Configuring IIS Security Settings • 30
Custom Installation • 20

D

Deployment Architecture • 47
Documentation Conventions • 7

F

Feedback • 8

G

General Conventions • 8

H

Hardware Requirements • 10
How It Works • 12

I

Indicating SQL Server Parameters • 23
Initial Conditions • 38
Installation Walkthrough • 48
Installing SiteBuilder • 14, 27
Installing SiteBuilder Server • 50
Installing Templates and Language Packages • 29

L

Launching SiteBuilder Installation Wizard • 15
Limitations of Migration Procedure • 40
Logical Architecture • 45

M

Migrating from SiteBuilder 2.0.5 to SiteBuilder 3.2 • 38
Migration General Rules • 39
Migration Scheme • 39

O

Organization of This Guide • 7
Overview • 45

P

Preface • 6
Preparing for Installation • 9
Prerequisites • 49
Providing IIS Web Site Parameters • 25

R

Remaining Data • 34
Removing SiteBuilder from Your System • 31
Removing SiteBuilder Using MS Windows Interface • 31
Removing SiteBuilder Using SiteBuilder Installation Wizard • 32
Repairing SiteBuilder • 35

S

Selecting Destination Folders • 21
Selecting IIS Web Site • 26
Selecting Installation Scenario • 24
Selecting Shortcuts Location • 22
Selecting Type of Installation • 18
Software Requirements • 10
System Requirements • 9

T

Transferring Sites • 40
Transferring User Accounts • 39
Typical Installation • 19
Typographical Conventions • 7

U

Upgrading SiteBuilder • 38
Upgrading SiteBuilder 3.0 to SiteBuilder 3.2 • 41

W

Who Should Read This Guide • 6