

Express

The Fun and Easy Way to
Share Your Home Movies
on DVD

User Guide

Special thanks to Mike Iampietro, William Chien, Brian Lane, Bill Loesch, Ivan Maltz, Chris Zamara, and Nick Sullivan.

Writing: René White

Express, Pinnacle Systems, and the Pinnacle Systems logo are registered trademarks of Pinnacle Systems, Inc.

All rights reserved. QDesign MPEG-2 Layer II Fast Encoder/Decoder (c) 1996-2001 by QDesign Corporation. Windows Media is a trademark of Microsoft Corporation. All other trademarks are the property of their respective owners. You agree not to remove any product identification or notices of the proprietary restrictions from Pinnacle Systems' products or manuals.

All products mentioned in this manual are trademarks of their respective owners.

Express User Guide © 2001 by Pinnacle Systems, Inc. All rights reserved.

No part of this manual may be copied or distributed, transmitted, transcribed, stored in a retrieval system, or translated into any human or computer language, in any form or by any means, electronic, mechanical, magnetic, manual, or otherwise, without the express written permission of Pinnacle Systems, Inc.

Pinnacle Systems, Inc.
280 North Bernardo Avenue
Mountain View, CA 94943

Pinnacle Part Number 41001018

Printed in the USA.

Table of Contents:

Pinnacle Express

CHAPTER 1: OVERVIEW

COMPUTER REQUIREMENTS.....	2
INSTALLING YOUR SOFTWARE.....	3
CONNECTING THE CAMERA.....	4
ON-LINE HELP.....	4
ABBREVIATIONS AND CONVENTIONS.....	5

CHAPTER 2: BRINGING IN VIDEO

TRANSPORT CONTROLS.....	8
SOURCE MATERIAL OPTIONS.....	8
CAPTURE VIDEO DIALOG BOX.....	10
THE CAPTURED AND IMPORTED FILE WINDOW.....	12
SCENE DETECTION OPTIONS.....	13

CHAPTER 3: PREVIEWING THE DISC

THE TV SCREEN.....	16
THE REMOTE CONTROL.....	16
THE DISC METER.....	17
OUTPUT MEDIA SETTINGS.....	18

CHAPTER 4: TV SCREEN AND REMOTE CONTROL

TV SCREEN.....	21
REMOTE CONTROL NAVIGATION.....	22

CHAPTER 5: CUSTOMIZING MENU PAGES

MENU PAGE ELEMENTS.....	25
THE STYLE CHOOSER.....	28
CREATE CUSTOM MENU DIALOG BOX.....	30

CHAPTER 6: EDITING SCENES AND STILL IMAGES

THE EDIT VIDEO DIALOG BOX.....	34
THE THUMBNAIL LIST VIEW.....	35
THE ICON LIST VIEW.....	37
THE EDIT TOOLS.....	38
EDIT OPTIONS.....	39
THE PLAYER.....	40
TRIM A SCENE.....	41
IMPORTING FOLDERS.....	43
SLIDESHOW.....	44

CHAPTER 7: MAKING THE DISC

ASSIGNING YOUR FILES.....	47
TRANSCODING AND COMPILING YOUR PROJECT.....	48
BURNING THE DISC.....	49
THE CLEAN-UP FILES BUTTON.....	50

APPENDIX

TECHNICAL SUPPORT.....	51
LICENSE AGREEMENT.....	53
INDEX.....	57

Chapter 1: Overview



Pinnacle Express lets you use your personal computer to turn your home movies into DVDs and Video CDs. Soon you'll be able to send a friend or family member movies that they can play in their DVD player. With Pinnacle Express, it's as easy as 1-2-3.



First, Pinnacle Express lets you “capture video” or transfer the video from your camcorder to your PC's hard drive. You can also include videos and stills you have saved on the PC.



Next, preview what your disc will look like on a DVD player. Pinnacle Express automatically creates a scene index menu page for you! You can test your disc with the on-screen remote or just click on a menu page item and see it play. From this screen you can access tools that let you pick a menu page style, customize menu pages, arrange the video scenes and/or still images in any order, or delete, combine, or split scenes.



The final step is to burn your movies to CD or DVD using your burner. Pinnacle Express lets you create VideoCD, Super VideoCD, or DVD discs.

COMPUTER REQUIREMENTS

In addition to your Express software, you need a PC-compatible computer with:

- Pentium II 300 or higher or equivalent
- Microsoft Windows 98 Second Edition, Windows Millennium, Windows 2000 or Windows XP
- DirectX-compatible graphics card
- DirectX-compatible sound card
- 64 MB of RAM (128 MB recommended)
- 200 MB of free hard disk space to install software
- Your hard drive must be capable of sustained reading and writing at 4 MB/sec. All SCSI and most UDMA drives are capable of this. DV-format video consumes 3.6 MB of hard disk space for every second of video, so four minutes of DV video will require almost 900 MB of hard disk space.
- CD-ROM drive
- Speakers
- Mouse

INSTALLING YOUR SOFTWARE

To install your Studio Express software:

1. Insert the Express CD-ROM into your CD-ROM drive. If you have Autorun enabled for your CD-ROM, Setup will run automatically.
2. If you do not have Autorun enabled, navigate to your CD-ROM drive, and double-click on Setup.exe.
3. Select the language of your choice.
4. Enter your serial number (found on the outside back cover of this manual).
5. Agree to the Express software license terms (click “I Agree”). If you do not accept or understand the terms, you should promptly return this product to your dealer.
6. Choose “Typical” installation (recommended). Only advanced computer users should choose “Custom.”
7. Click “Next” until the installation is completed.
8. Restart. In some cases, you may be instructed to restart your PC.
9. Next, you will be given the opportunity to register your copy of Express. You can quickly and easily register using your Internet connection. Registration is important for three reasons:
 - Registration allows Pinnacle Systems to inform you of free upgrades to the Express software
 - Registration makes you eligible for special offers and promotions from Pinnacle Systems
 - Registration is required to receive technical support

CONNECTING THE CAMERA

After the software application installation is complete, connect your DV video device to your PC, using any IEEE-1394 DV cable (4-pin to 6-pin). If you have a laptop computer, you may have a 4-pin IEEE-1394 connector.

To connect your DV camcorder/VCR to your PC:

1. Connect the IEEE-1394 cable to your PC.
Connect the 6-pin connector of the IEEE-1394 DV cable to one of the IEEE-1394 data ports on your DV board.
2. Next, connect the IEEE-1394 cable to the DV device.
Connect the 4-pin connector of the IEEE-1394 DV cable to the DV IN/OUT or the DV OUT connector of your DV camcorder/VCR. Make sure that your camcorder is turned on and in VTR mode.

ON-LINE HELP

On-line help is right where you need it, when you need it, while you're working in Express.

Standard On-line Help: Click the *Help* button in the Express main menu bar, or press F1 to display the table of contents page of the standard help topics. Click *Help > Help Topics* if you want to search for a specific topic, or command.

Tool Tips: To find out what a button or other Express control does, pause your mouse pointer over it and a Tool Tip appears explaining its function.

ABBREVIATIONS AND CONVENTIONS

This guide uses the following conventions to help organize the material.

Terminology

Express refers to Pinnacle's video capture and disc authoring software.

The term *DV* refers to DV and Digital8 camcorders, VCRs, and tapes.

The term *1394* refers to OHCI-compliant IEEE-1394 FireWire, DV, or iLink interfaces, ports and cables.

The term *Analog* refers to 8mm, Hi8, VHS, SVHS, VHS-C or SVHS-C camcorders, VCRs and tapes, and to Composite (RCA) and S-Video cables and connectors.

The term *assets* refers to video and audio files and scene index menu pages.

The term *video file* refers to source video/audio from a DV capture device, or analog video/audio that has been digitized and saved to disk.

The term *scene* refers to a video file that Express has Scene Detected and placed in List View.

The term *scene index menu page* (or just *menu page*) refers to a graphic background for up to nine interactive buttons, and to the layouts, text styles, and frame types comprising the menu page.

The term *thumbnail* refers to the reduced-sized scene image covering each menu button.

Dialog Box and Window Names

Names of buttons, dialog boxes, windows and related items are written in *Italics* so you can find them in the text faster.

Example: Click the *Accept* button in the *TitleDeko* window.

Choosing Menu Commands

The right angle bracket symbol (>) denotes the path for hierarchical menu items. For example, to create a new file, the instruction would be

Example: Select *File > New Project*

Keyboard Conventions

Key names are spelled with initial caps. A plus sign denotes a key combination.

Example: Press Ctrl + A to select all the video scenes in the List View.

Brackets denote keys that do not have names printed on them.

Example: Press the [Spacebar] to pause the slideshow.

Mouse Clicking

When a mouse click is required, the default is always a left-click unless specified.

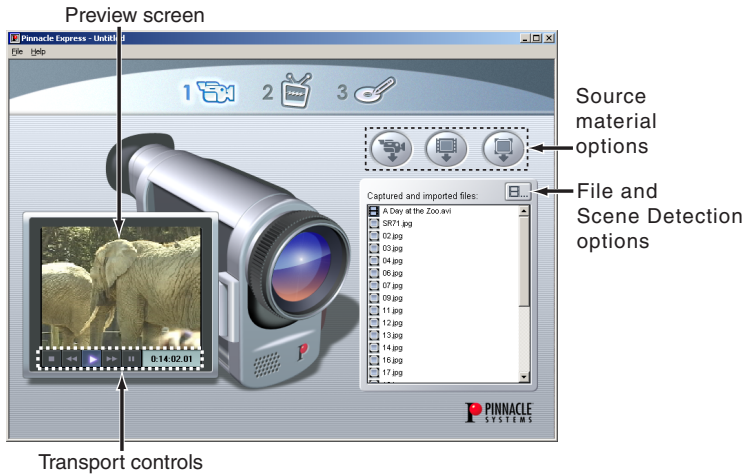
Chapter 2: Bringing In Video

As mentioned earlier, you make a CD or DVD in three steps: (1) Bring In Video, (2) Preview and Edit your video in the TV Screen, and (3) Make your Disc. These modes are represented by three buttons atop the Express interface, which are ordered in the sequence used to make a disc.



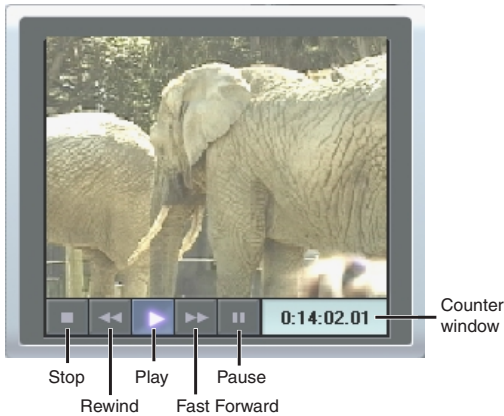
Bring In Video is the process of transferring a video file from a digital camcorder or other source to your PC's hard drive.

Your Bring In Video screen looks like this:



Transport Controls

Use the *Transport controls* to view your tape or seek to the tape location at which capture is to begin. The *Counter window* displays the current position of the tape, and the *control buttons* display the current mode of the camcorder or VCR.



Source Material Options

The three buttons on the right side of the screen allow you to capture video via a 1394 (FireWire) connection from a DV device, import video from an AVI file, or import a still image.



The Asset List: Express shows the file name and type of each *asset* (the files you capture and import) in the *Captured and imported files* window (see below).

Capturing Video from Your Camcorder

Often you will want to start your project by bringing in video from your camcorder. Express supports digital camcorders and VCRs using your PC's 1394 (Firewire) interface. Your DV device (camcorder or VCR) is connected to your PC as described in Chapter 1. You may capture an entire tape, or start and stop capture at any point in the tape.


The *Capture video* button  begins the capture process by opening the *Capture Video from DV Camcorder* dialog box (see below).

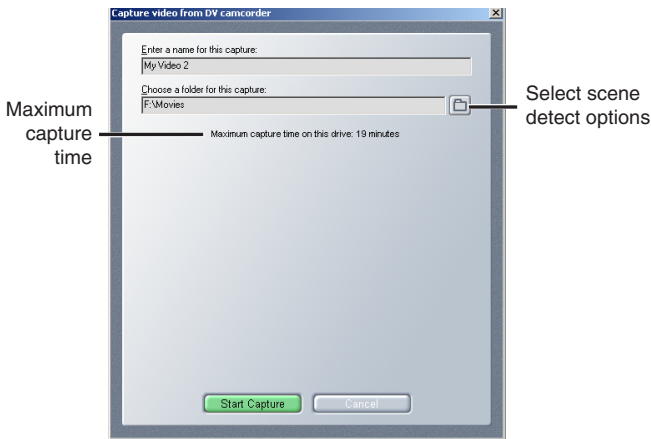
Import File

Express also allows you to import video files already on your PC's hard disk. If you wish to import video from a type 2 AVI file (the type created by a DV camcorder), click the *Import video* button  to open a browser. Click the *Import still* button  to bring in still images from your hard drive.

You can also import video and still image files by dragging them from Windows Explorer into the *Captured and imported files* window (see below).

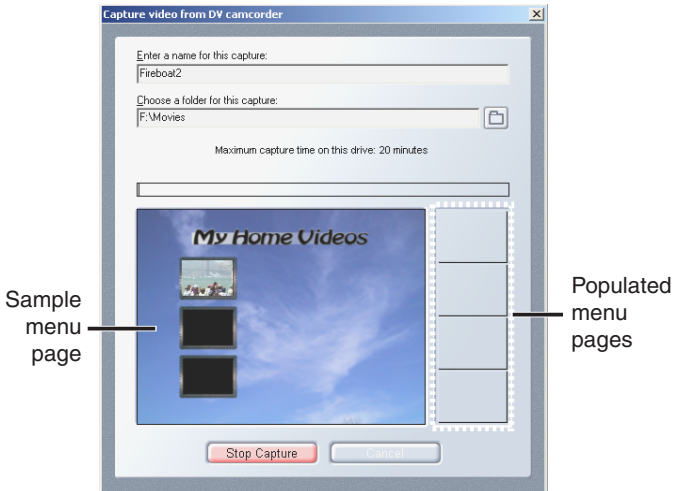
The Capture Video From DV Camcorder Dialog Box

The *Capture video* button  begins the capture process by opening this dialog box:




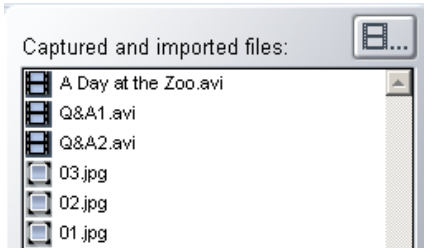
The Preview screen above the Transport Controls continues to display incoming video. When you choose the drive where the video will be captured, Express calculates and displays the maximum capture time. Enter a name for your capture, and click the *Start Capture* button.

The *Start Capture* button triggers the display of a sample scene index menu page with scene *thumbnails* created from the initial frame of each video scene detected. When one menu page is populated with thumbnails, it slides to the right and another menu page is generated. This continues until you click the *Stop Capture* button to end your capture session.



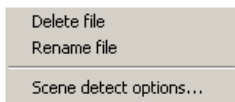
The Captured and Imported Files Window

As you capture and import, Express shows the file name and type of each asset in this window. The *Asset menu* button  at the top right of the window gives you commands for managing your assets.



Deleting and Renaming assets

To delete or rename any asset, select the file name from the list, click the *Asset menu* button, and select the desired operation from the pop-up *Asset menu*.



Scene Detection options

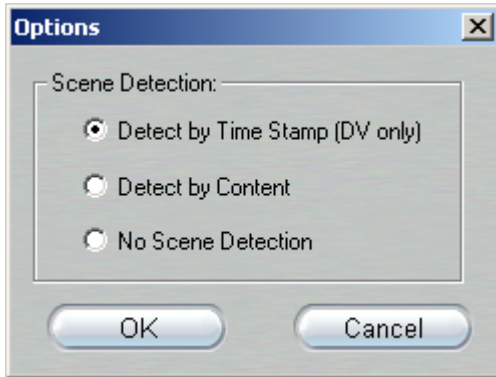
The *Scene detect options* choice on the *Asset menu* opens the Scene Detection Options dialog box where you choose how you want Scene Detection to operate (see below).

Importing assets by dragging from Explorer

Another way to import files is to select them in Windows Explorer and drag them onto the asset list. You can instantly create a slide show by dragging in a folder of images in one operation!

The Scene Detection Options Dialog Box

Open this dialog with *Scene detect options* from the *Asset* menu in the *Captured and imported files* window.




Automatic Scene Detection is a key feature of Express. It eliminates the drudgery of manually marking the beginnings and ends of video scenes. When Express captures your video to your hard drive, it automatically detects natural breaks that occur in that video.

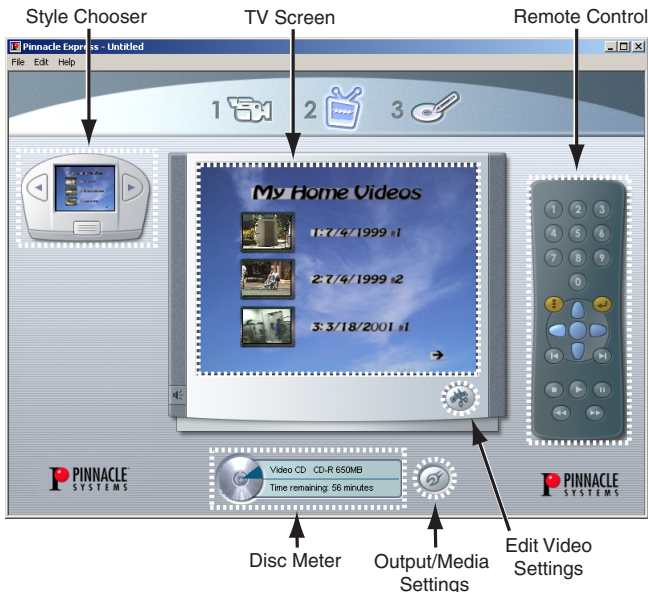
Your choices are:

- **Detect by Time Stamp:** This option only works with DV video. It detects scenes by sensing a discontinuity in the time of day recorded along with the video.
- **Detect by Content:** This option, which detects scenes by changes in brightness, works with any video. Use it if when bringing video from tape that has been dubbed, or when using analog tapes with a Digital8 camcorder.
- **No Scene Detection:** This option skips the scene detection feature (don't worry—you'll still be able to divide video clips into scenes manually).

Chapter 3: Previewing The Disc

Clicking on this TV icon  takes you to the Preview/Edit screen, where Express shows how your finished project will look when played on your DVD player and TV. The on-screen DVD Player Remote Control gives you a realistic feel for the interactivity you build into each project.

In addition to previewing your project, this screen is also where you design menu pages, rearrange and trim scenes, and choose the type of blank media on which you'll be recording. You'll learn more about these subjects in later chapters.



The Preview/Edit mode displays six areas of interest: the *Style Chooser*, the *TV Screen*, the *Remote Control*, the *Edit Video Settings* button (which opens the **Edit Video Settings** dialog box), the *Output Media Settings* button, (which opens the **Output Media Settings** dialog box), and the *Disc Meter*. This chapter describes the *TV Screen*, the *Remote Control*, the **Output Media Settings** dialog box and the *Disc Meter*.

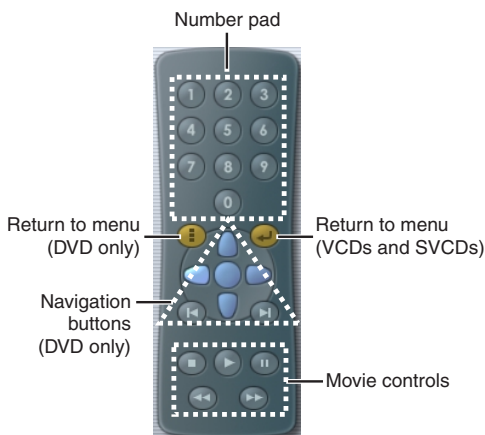
The TV Screen

The TV screen previews what you will see on your TV when the completed disc is played in a VideoCD or DVD player. It displays menu pages as well as full-motion video and still images from your project.

Click your mouse on the scene icons within the menu pages to play the corresponding scenes. Use the remote control to return to menu pages. You can also use mouse clicks to navigate from one menu page to another.

The Remote Control

This control allows you to navigate between menu pages, and to play scenes in any order.





Number pad


When the menu page displays, press any two-digit scene number for direct access to the corresponding scene.

Navigation buttons

Move (Up, Down, Left, Right) through a DVD menu page, and once a scene is selected, play it by clicking the center button.

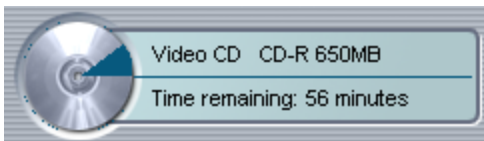
Jump to the previous  or next  scene or menu page.

Return to Menu Button

Click  at any time to return to the most recently-displayed menu page.

The Disc Meter

This display shows you the current recordable capacity on your output disc. The figure depends on both the output format chosen in the *Output Media Settings* dialog box (see below) and the estimated space remaining on the disc.



Output Media Settings

Click the *Settings* button  to open this dialog box:



Output Format

Select the type of disc you wish to create.

VCD (VideoCD): This is an extremely popular format in China and other parts of the world. A VideoCD disc allows up to 70 minutes of VHS-quality video to be burned onto a CD and is supported by a large number of DVD players. Check the Pinnacle web site for a list of compatible players.

S-VCD (Super-VideoCD): Super-VideoCD is an enhancement to the VCD format. An S-VCD disc allows up to 30 minutes of near-DVD quality video to be burned onto a CD and is supported by a number of DVD players. Check the Pinnacle web site for a list of compatible players.

DVD (Digital Versatile Disc): A DVD disc is the ultimate in video quality. Express can burn up to 90 minutes of high-quality video and audio onto a DVD-R/RW disc. For a list of compatible DVD burners, check the Pinnacle web site.

Media

Based on the output format you choose, Express will prompt you as to which type of media is needed.


CD-R (and CD-RW): Use for VCD and S-VCD titles. If you are using CD-RW, Express will prompt you to erase the disc.

DVD-R (and DVD-RW): Express supports General DVD-R (write once) and DVD-RW (write many) media. Express will support other DVD formats in the future. Check the Pinnacle web site for updates.

Check Media

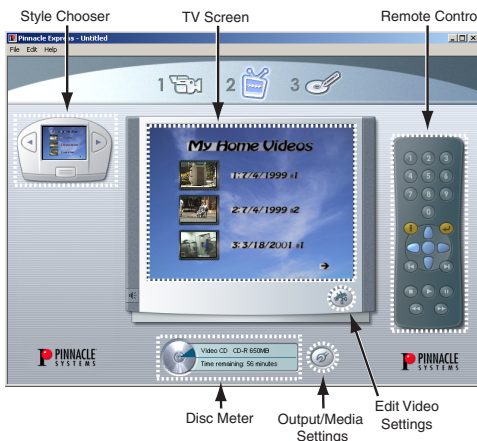
Place the blank or erasable disc into your drive and Express will verify its usability.

Chapter 4: TV Screen and Remote Control

 This is where Express shows you how your project will look on a television screen. The DVD Player Remote Control gives you a realistic feel for the interactivity you build into each project.

TV Screen

The TV Screen is designed to have the look and feel of a television you would find in your living room. It displays scene index menu pages as well as full-motion video and still images from your project. You navigate in the TV Screen with either your cursor or the Remote Control.



Cursor Navigation

If a project has more than one menu page, left- and right- arrows appear at the bottom of the page to indicate previous or subsequent pages. Click these arrows with your cursor to move through menu pages.





Click any thumbnail with your cursor and the corresponding scene or still image will activate, come full-screen, and play.

Click any title with your cursor and a text field opens. Modify or create a new title, then press [Enter] and the modifications are applied.

Remote Control Navigation

The Express Remote Control features all functions needed to navigate through VideoCDs, Super VideoCDs, and DVDs.

Number Pad

The 10-digit number pad allows direct access to any scene in a movie. If you are not already on a menu page, use the *Go To Menu Page* button (click  for DVDs and  for Video CDs and Super Video CDs) to return to a menu page. Then key in the scene number you want to access, and Express plays that scene immediately.

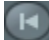

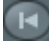
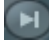


Display of scene number keyed into number pad

DVD Navigation Buttons



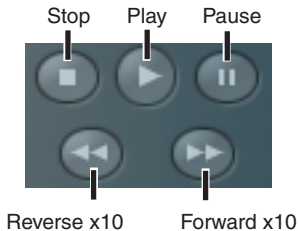
These seven buttons provide navigation to selected scenes within a menu page. Selected scenes are highlighted. Blue buttons take you Up, Down, Left and Right. The center blue button is *Play Selected Scene*. The two remaining buttons have dual functions:

- When a scene is playing or paused,  is *Play Previous Scene* and  is *Play Next Scene*.
- When a menu page is displayed,  is *Show Previous Menu Page*, and  is *Show Next Menu Page*.

Note: if you can't navigate through DVD menu pages with the blue buttons, click the Settings button (see Chapter 3) and verify you've selected DVD as your Output Format.

Movie Controls

These are controls for the movie only, and do not affect scenes or menu pages.



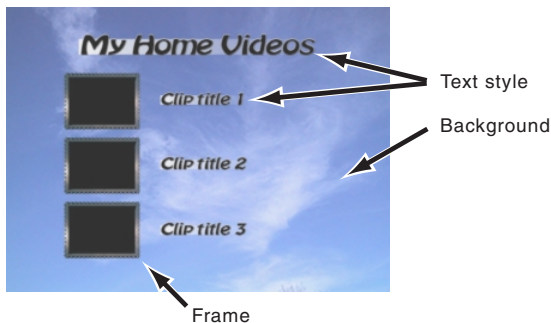
Chapter 5: Customizing Menu Pages



This is where you choose pre-made styles for your scene index menu pages, or design custom menu pages. Before describing both approaches, here's an overview of the elements which combine to make Express menu pages.

MENU PAGE ELEMENTS

An Express scene index menu page is comprised of four graphic elements and one audio element. The graphic elements are Layout, Background, Text style, and Frames. The audio element is a WAV or MP3 file you can assign to any menu page.

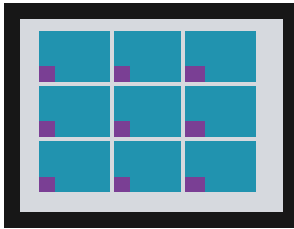


You can access each element when you customize a menu page, a process described later in this chapter.

Layout

This menu page element is the template that determines how frames, main title, and scene title are arranged on the page. Layouts differ in the number and position of frames, and whether or not they include main titles or scene titles.

To illustrate, here are two Express layout templates and their associated menu pages with background, text and frames. Notice that although there are nine scenes in the top menu page, there is no main title, and the scene titles are limited to ascending numbers.



Menu page layout

Menu page with elements

The layout indicates the positioning of frames, main title, and scene titles/numbers within the menu page. Layouts are selected in the Create Custom Menu dialog box (see below).

Background

This menu page element is the image which creates the graphic background. Express comes with a number of attractive backgrounds, and also allows you to import any BMP, JPG, PCD, PCT, TGA, TIF, or WMF file for use as a custom background.

The Express background aspect ratio is 4 to 3. If you import an image with a different aspect ratio, Express will scale it to fit within the frame, and fill the remaining area with the color of the top-left pixel of the imported image.

Backgrounds are found and imported in the Create Custom Menu dialog box (see below).

Text style

With this menu page element, Express offers you multiple text styles with different fonts and colors that you can apply to your menu pages. Text Styles are found in the Create Custom Menu dialog box.

Frames

Frames surround each scene thumbnail, and you can choose frames that differ in color and transparency.

In addition to being a graphic element on the menu page, frames are highlighted to indicate which scene is selected when navigating through a DVD menu page.

Frames are found in the Create Custom Menu dialog box.

Sound

Sound can be used as a menu page element. Express comes with a selection of music and sound effect WAV files. You can also import custom WAV or MP3 files (e.g. sound effects, music, or voice-over narration). You can attach any WAV or MP3 file to any menu page or still image.

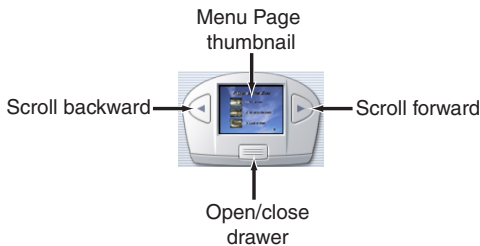
Audio files are found and imported in the Create Custom Menu dialog box (see below).



THE STYLE CHOOSER

For fast and easy menu pages, use the Express Style Chooser. It's pre-loaded with numerous styles featuring different combinations of layouts, backgrounds, text styles and frames.

Navigating the Style Chooser

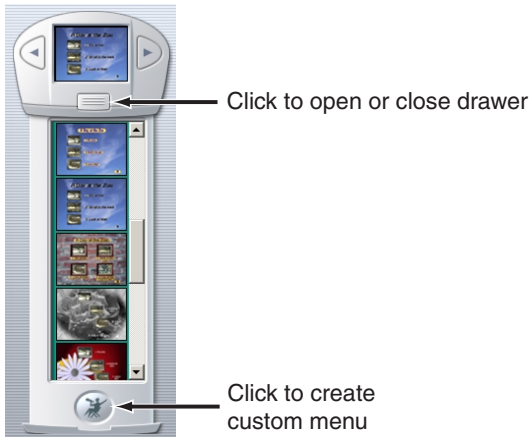
The Style Chooser displays a thumbnail of the current menu page appearing on the TV Screen. As you scroll forward or backward through the style choices, each thumbnail is replicated in the TV screen for immediate viewing.



The Style Chooser also offers a No Menu choice: when your disc is inserted in a player, the disc plays from start to finish without displaying a menu page. The viewer still has the ability to jump forward  or back  between scenes with the remote control.

The Style Chooser Drawer

Click the *Open Drawer* button on the Style Chooser to display five style thumbnails at a time. Click on any style and it appears instantly in the TV Screen, displaying scene thumbnails and titles of imported or captured assets.

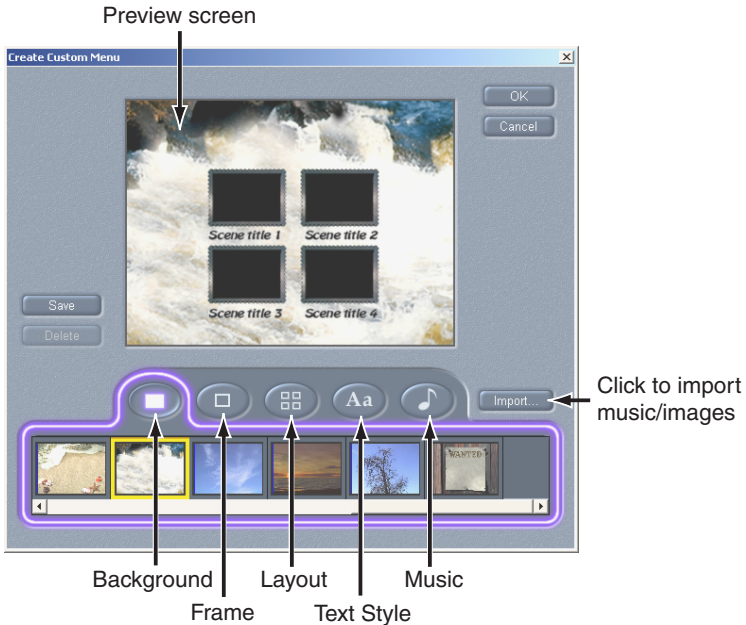


Click on the button at the bottom of the drawer to customize a menu page.

Create Custom Menu Dialog Box

Access this dialog box by clicking the *Create Custom Menu* button on the Style Chooser. This is where you may customize each element of a menu page. Click on any of the five element buttons and choices appear. Click on any choice and the sample menu page is immediately updated in the Preview screen with the new element choice.

To use your own background images, MP3 or .WAV files, click the *Import* button and make your selection to open a browser.



Menu Page Audio Files

When attaching an audio file to a menu page, Express sets the minimum duration at 40 seconds, and the maximum duration at 280 seconds. Here are three examples:

- When displaying a menu page with a 15-second audio file attached, Express plays the audio file and adds another 25 seconds of silence before playing the file again. This continues for as long as the menu page displays.
- When displaying a menu page with a 120-second audio file attached, Express plays the audio file and immediately plays it again (loops the audio file). This continues for as long as the menu page displays.
- When displaying a menu page with a 300-second audio file attached, Express plays the first 280 seconds and begins playing it immediately from the start. This continues for as long as the menu page displays.

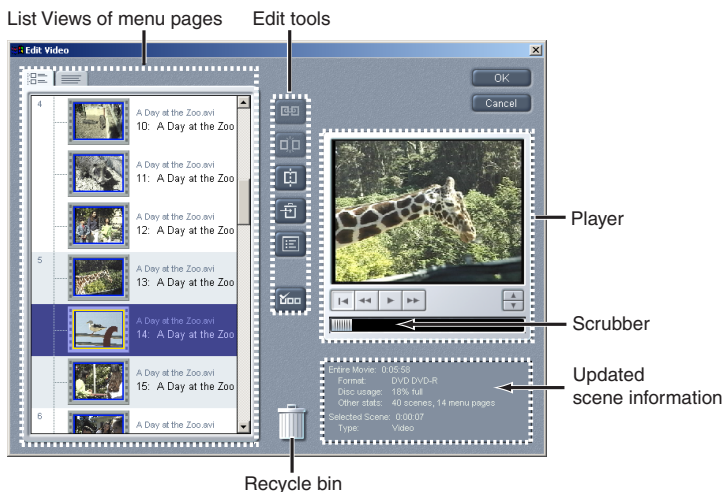
Chapter 6: Editing Scenes and Still Images

When you have a menu page constructed to your liking, you may wish to edit your video scenes and still images. Click the *Edit Video* button to open the *Edit Video* dialog box. This is where you rearrange, trim, and rename scenes, change scene thumbnails, attach audio files to Slideshows, and add dissolves and fades between scenes and still images.



THE EDIT VIDEO DIALOG BOX

This dialog box opens with two *List Views* of the menu pages, a *Player* to view scenes and still images, a scene information box that updates with each selection in the List View, and a suite of edit tools. Each List View is a view of the menu pages, one that allows you to scroll through all scenes and still images.



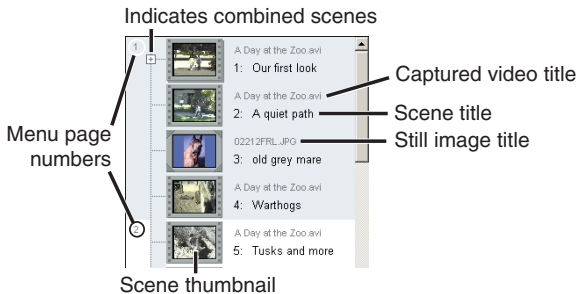
When Express brings in video from a DV device, it assigns scenes a *captured video title* and a *scene title*. The default captured video title is the recording date of the video, and the default scene titles are ascending numbers assigned in the order each scene is detected.

The Thumbnail List View

Access this List View by clicking the *Thumbnail* tab



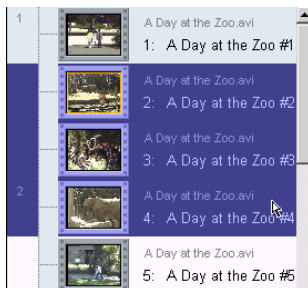
at the top of the dialog box. This view of the menu page displays the thumbnail representing the scene, the title of the captured video file or still image, and the scene title.



The menu pages illustrated above have four scenes per page, indicated by the alternating gray and white horizontal list sections.

Navigating the Thumbnail List View

Click any list section and it turns blue, indicating that it is selected. Click and drag between sections to select multiple sections.



Click and drag cursor
to select multiple sections

When your cursor passes over the scene thumbnail, it turns into the grabber symbol. The grabber will take a scene (or scenes if selected) and move it anywhere within the list. This is the key to rearranging scenes and still images in Express.



As you click and drag with the grabber, it changes to an arrow with a rectangle, signifying that moving the selection is allowed.



Renaming Scene and Still Image Titles


Click a title and a text field opens with an I-Beam cursor. Type in your new title and press **[Enter]**.

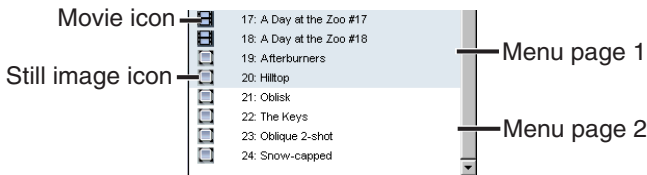


Duplicating Selected Scenes

You can duplicate selected scenes and still images in both the Thumbnail and Icon List Views by using the standard Windows keyboard commands for Copy (Ctr + C), Cut (Ctr + X), and Paste (Ctr + V).

The Icon List View

Access this List View by clicking the *Icon* tab  at the top of the dialog box. This Icon View of the menu page displays three times as many scenes as the Thumbnail View.



Navigating in the Icon List View

Just as with the Thumbnail View, click any list section and it turns blue, indicating that it is selected. Click and drag between sections and you select multiple scenes.


Your cursor turns into a grabber symbol when you move over the movie or still image icon. Click and drag to reposition a scene (or scenes).


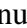


Note: Unlike the Thumbnail List View, you cannot rename scenes in this view.


The Edit Tools

Combine Scenes


This allows two or more scenes to play as one extended scene. This button  becomes active when two or more scenes are selected in either of the List Views (you can also left-click in a selected scene and choose *Combine* from the dropdown menu).

Clicking the button combines the scenes, and is indicated by the Plus sign  in the List View. Clicking the Plus sign changes it to a Minus sign  and expands the List, displaying all combined scenes.



Uncombine Scenes

This separates scenes which have previously been combined. This button  becomes active when a combined scene is selected in a List View, and the combined scene is collapsed.

Split

This button  divides a scene at the frame displayed in the Player window. This is a powerful editing tool used along with the Delete button, because it allows you to trim the beginning or end of any scene to frame accuracy.

Delete

This button  sends the selected scene or scenes to the *Recycle Bin* . After splitting a scene, send the unwanted portion to the Recycle Bin.

The Recycle Bin

Click on the icon to view deleted scenes. You have the option to restore deleted scenes to your list view.

Thumbnail



This button creates a new scene thumbnail from the frame displayed in the Player window. This means that you can choose the most representative frame in any scene, and not be locked into using the initial frame of that scene. (Hint: use the *Frame Forward* and *Frame Reverse* buttons in the Player to choose the precise frame you wish to designate, then click the *Thumbnail* button to update that scene's thumbnail).

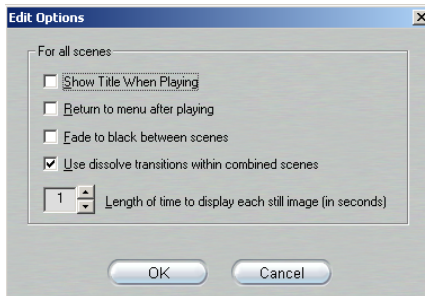
Scene Options



This button opens the *Edit Options* dialog box (see below).

Edit Options

The *Edit Options* dialog box offers choices which affect how your disc will be viewed by the user:



Show title when playing: This displays the scene title for 2 seconds at the beginning of each scene. This is a global setting for all scenes.

Return to menu after playing: This returns the user to the menu page after each scene. This is a global setting for all scenes. If this choice is not made, each subsequent scene plays automatically without user intervention.

Fade to black between scenes: Choose this and Express globally places a video cross-fade between all scenes. The cross-fade does not affect audio.

Use dissolve transitions within combined scenes: Choose this and Express places a dissolve between all combined scenes and still images (see Slideshow below).

Length of time to display each still image: This sets the duration for display of still images. Minimum duration is 1 second; maximum is 999 seconds. This is a global setting for all still images.

The Player

The buttons and controls in the *Player* window let you navigate through a scene.





Play/Pause: The *Play* button previews the scene from the current position. Once preview begins, *Play* toggles to a *Pause* button. When paused, the frame on which Preview stops becomes the selected frame.



Scrubber: Grab the *Scrubber* with your cursor to quickly transverse forward and backward through the scene. The Scrubber shows at a glance your relative position within a scene. Regardless of length, the Scrubber

bar represents the entire length of the scene, with the left edge as the beginning.



Frame Forward/Reverse: The *Frame Forward*  button advances the Scrubber incrementally one frame forward with each click. The *Frame Reverse*  button reverses the Scrubber incrementally one frame backwards with each click.



Fast Reverse: Plays the scene in fast-reverse mode at 10x the normal speed.



Fast Forward: Plays the scene in fast-forward mode at 10x the normal speed.



Go To Beginning: Moves Scrubber to the first frame of your scene.

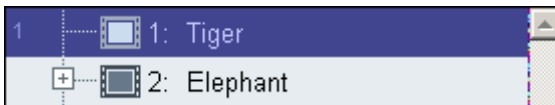
TRIM A SCENE

A *video scene* is a number of video frames joined together and displayed at a constant rate, giving a viewer the perception of motion.

To trim a scene, we'll use this sample video scene named Tiger, 7 frames in length (for purposes of illustration).



This is Tiger in the Express List View:



We want a new, trimmed scene to start with frame 2 and end with frame 5.

To trim the scene:

1. Select the scene. If either the *Fade to black between scenes* or *Use dissolve transitions within combined scenes* edit options are selected, deselect them (either choice can be re-initiated after trimming).
2. Use the Scrubber to move within proximity of frame 2.
3. Use the *Frame Forward/Reverse* buttons to display frame 2 in the Player. This is the first frame of your trimmed scene.
4. Click the *Split* button. Express places both new scenes in the List View, and names Frame 1 “Tiger,” and Frames 2 through 7 “Tiger-1.”



5. Select “Tiger” in the List View and click the *Delete* button. “Tiger-1” remains in the List View.
6. Select “Tiger-1” and scrub to frame 6. This is the frame following the last frame of our new trimmed scene.
7. Click the *Split* button. Express places both new scenes in the List View, and names Frames 2 through 5 “Tiger-1” and Frames 6 and 7 “Tiger-2.”



8. Select “Tiger-2” in the List View and click the *Delete* button. “Tiger-1” remains in the List View and is our desired trimmed scene, beginning at Frame 2 and ending with Frame 5.






SLIDESHOW


Another powerful feature of Express is *Slideshow*, the ability to take a collection of digital still images, combine them in List View, choose whether to cut or dissolve between images, and set durations for image display. You even have the option to attach an MP3 or WAV file to each Slideshow.

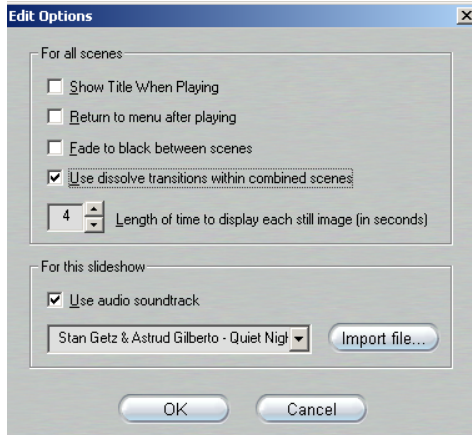
Creating a Slideshow

To create a Slideshow:

1. Click on the *Edit* button  to open the List View.
2. Use your cursor to select the still images you wish to include in your Slideshow (you can also include video scenes in a Slideshow; see *Intermixing Still Images and Video Scenes* below).
3. Click the *Combine Scenes* button  to condense all selected still images and scenes into one scene. Your new condensed scene now has a plus sign  to the left of its icon.
4. To re-arrange still images and video scenes within the Slideshow, click the plus sign. It toggles to a minus sign and expands the condensed scene. Drag and drop individual still images and video scenes as described

under the Thumbnail List View and the Icon List View topics above.

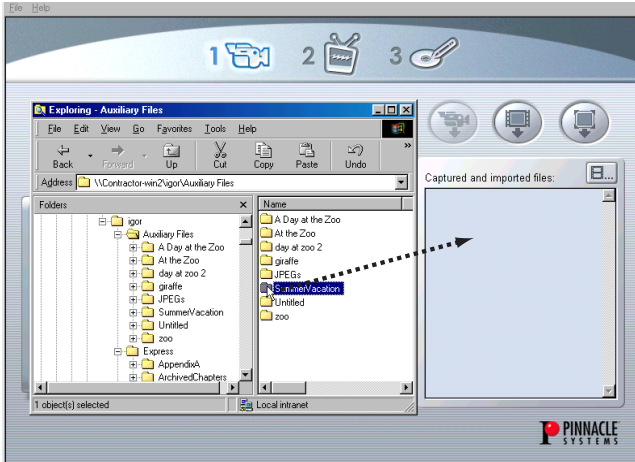
5. Finally, click the *Scene Options* button  and:



- Choose a duration for displaying each still (from 1 to 999 seconds). This is a global setting in Edit Options.
- Choose whether or not to fade up from black with the first still image and fade to black after the final still image. This is a global setting in Edit Options.
- Notice that Express offers additional options for Slideshow. Choose whether or not to add an audio file (WAV or MP3) to a Slideshow.
- You can construct multiple slideshows in a project, and import separate audio files for each one.

Importing Folders

A time-saving technique for importing multiple images is to place them in a folder, and drag that folder from Explorer directly into the Captured and Imported Files list.



Still Image Ordering

When importing a folder of still images, the images appear in their original order. However, they can be rearranged in any order when you open the Express List View.


Keep in mind that still images can be added or deleted once in the List View.

Intermixing Video Scenes and Still Images in Slideshow

You have the flexibility to combine video scenes with still images in a Slideshow. If you have attached an audio file, however, keep in mind that any natural audio from the video scene will be mixed with the attached audio file.

Chapter 7:

Making the Disc

Prior to *Making the Disc* , you must already have chosen the Output format from the *Output Media Settings* dialog box (Chapter 3).

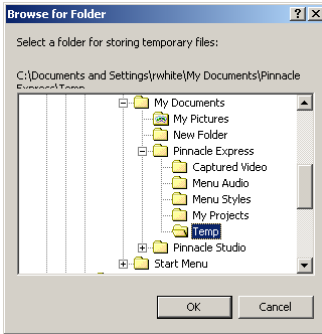
When the *Making the Disc* window opens, you have the *Transcoding*, *Compiling*, and *Disc Burning* elements of making a disc displayed on-screen.

Assigning Your Files

If you're making a VCD, you're transcoding your files to MPEG-1. If you're making an S-VCD or DVD, you're transcoding to MPEG-2.

By default, Express assigns these files to a *Temp* folder in *Pinnacle Express* on your C: drive. These can be quite large files, depending on the length of your project.

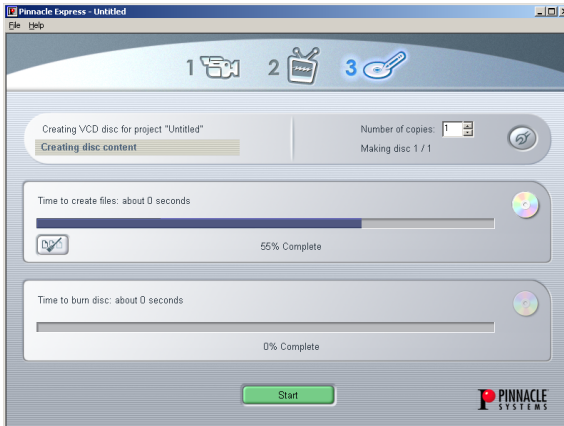
Click the *Options* button to open a **Browse for Folder** dialog box where you can choose any location for these transcoded and compiled files.



When you have your files assigned, click the *Start* button to begin burning your disc.

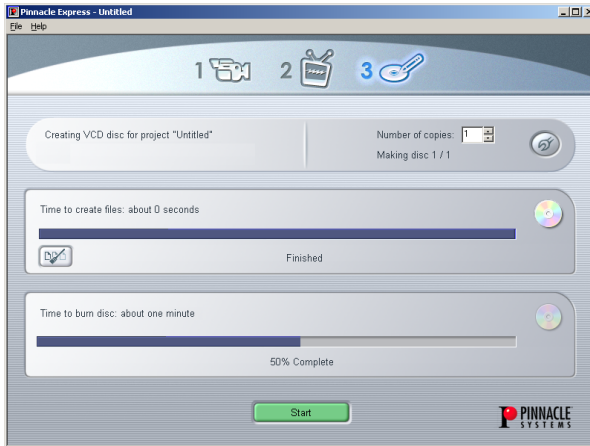
Transcoding and Compiling your Project

This screen displays the progress of transcoding and compiling your AVI files and still images. The time needed for these operations is related directly to the speed of your hard drive.

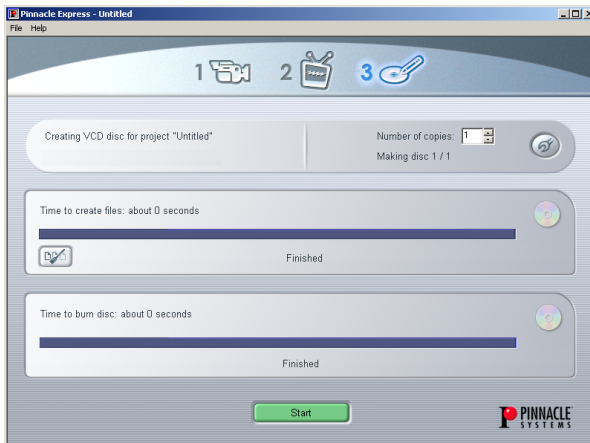


Burning the Disc

Express takes the compiled files and burns a disc. Progress is displayed here.




When the disc is completed, the screen reads “Finished” and your disc tray opens with the completed disc.

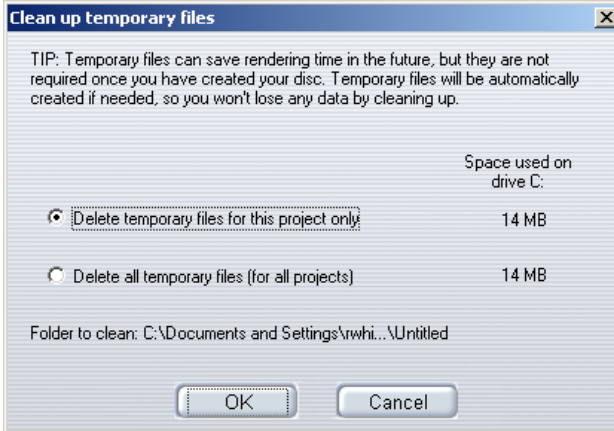


If you're burning more than one disc, Express prompts you to load another blank.

The Clean-up Temporary Files Option

Once you have transcoded, compiled, and rendered a project, you can have potentially huge files.

Express displays the *Clean-up* button , which offers two options:



Appendix A: Technical Support

Pinnacle Systems has FREE 24 x 7 self-service troubleshooting assistance. 24 hours a day, 7 days a week, you have two ways to find answers to your questions. You can use:

FAQs (Frequently Asked Questions)

Go to <http://www.pinnaclesys.com/support/express>

This is the best way to get your questions answered. Here you can easily find answers to the most common questions, as well as download the latest updates.

1. Discussion Forum

Go to <http://www.pinnaclesys.com/support/express> and select *Pinnacle Express Discussion Forum*.

Search Pinnacle Systems' online Discussion Forum to see if someone has already encountered your question. Post your question on the Discussion Forum and get help from Pinnacle Systems and other users. This forum is also searchable so you can—for example—type in “mp3 file size limits,” and discussions with solutions on this topic will be displayed.

2. **Email Support**

If you are unable to find answers to your questions using our website, Pinnacle Systems also offers troubleshooting and technical support by email. Email is usually responded to within 48 hours (excluding weekends and holidays). Our email address is consumer-support-us@pinnaclesys.com

Additional Support

Pinnacle Systems gives priority to electronic support vehicles (FAQs, Forums and email). However, if you wish to contact us directly, telephone support is available at 1-650-237-1800, from 8AM to 5PM Monday through Thursday, and 10AM to 5PM Friday (all times are Pacific time).

Appendix B:

License Agreement

CAREFULLY READ THE FOLLOWING TERMS AND CONDITIONS BEFORE USING THIS PROGRAM. USING THIS PROGRAM INDICATES YOUR ACCEPTANCE OF THESE TERMS AND CONDITIONS. IF YOU DO NOT ACCEPT OR UNDERSTAND THEM, YOU SHOULD PROMPTLY RETURN THIS PRODUCT TO YOUR VALUE-ADDED RESELLER OR DEALER.

The export and re-export of Pinnacle software products are controlled by the United States Export Administration Regulations and such software may not be exported or re-exported to any country to which the United States embargoes goods. In addition, Pinnacle software may not be distributed to persons on the Table of Denial Orders, the Entity List, or the List of Specially Designated Nationals.

By downloading or using a Pinnacle software product you are certifying that you are not a national of any country to which the United States embargoes goods and that you are not a person on the Table of Denial Orders, the Entity List, or the List of Specially Designated Nationals.

Proprietary Property

The Express program, Pinnacle Systems' trademarks, product names, user manuals, documentation and other support materials are either patented, copyrighted, trademarked, constitute valuable trade secrets (whether or not they or any portion thereof may be copyrighted or patented) or are otherwise proprietary to Pinnacle Systems. In addition, this program may contain the proprietary property of others which has been licensed to Pinnacle Systems (such as utility or plug-in software or programs, clip art and sample files).

QDesign MPEG-2 Layer II Fast Encoder/Decoder (c) 1996-2001 by QDesign Corporation. Windows Media is a trademark of Microsoft Corporation. All other trademarks are the property of their respective owners. You agree not to remove any product identification or notices of the proprietary restrictions from Pinnacle Systems' products or manuals.

License and Prohibitions

You may:

- (a) use the Express program and accompanying written materials (“programming materials”) in connection with a single computer. A copy of the program is being furnished to you along with this license agreement. If you wish to use this program on more than one computer, you must license additional copies of the program;
- (b) use the program and accompanying written materials on a licensed computer network. A “computer network” is any combination of two or more terminals or computers that are electronically linked and capable of sharing the use of a single software program. A “licensed computer network” is a computer network for which you have purchased from Pinnacle Systems, or its dealer, sufficient copies of this program so that the number of concurrent users of this program on the computer network at any given time is not greater than that number of copies of the program so purchased;
- (c) copy the program once only solely for backup purposes in support of your use of the program so long as you prominently label the backup copy with the appropriate copyright notice;
- (d) use the program for your personal use or in your business or profession. Permitting unauthorized users access to the program and program materials is a violation of this license agreement; and
- (e) transfer the program and license to another party if the other party agrees to accept the terms and conditions of this agreement. If you transfer the program, you must at the same time either transfer all copies to the same party or destroy any copies not transferred. If you transfer possession of any copy of the program to another party, your license is automatically terminated.

Prohibited Uses

You may not, without explicit prior written permission from Pinnacle Systems:

- (a) use, modify or transfer the program, or copy the program in whole or in part, except as expressly provided herein;
- (b) reverse-engineer, decompile or otherwise recreate the program or hardware in whole or in part;
- (c) make copies of or distribute, for profit or otherwise, or authorize the copying or distribution of the program, hardware, or materials related thereto, except as herein provided;

- (d) make alterations to the program or merge it into any other software;
- (e) grant sublicenses and leases or other rights in the program or program materials to others;
- (f) make verbal or media translations of the program, in whole or in part, or of the program materials;
- (g) modify the program for use on non-compatible hardware;
- (h) make telecommunications data transmissions of the program in whole or in part;
- (i) distribute the program on either a permanent or temporary basis to others;
- (j) make available any part of the program or program materials to any third party, other than your own properly authorized employees; or
- (k) make any alteration, modification, connection, disconnection, improvement or adjustment of any kind to or use Express except as explicitly contemplated in the enclosed programming materials.

It is agreed that the violation by you of any of the prohibitions described above shall be a material breach by you of this license agreement, and any attempt to sublicense, assign, or transfer any of the rights, duties, or obligations under this agreement, except as expressly provided herein, is void.

Term

The license is effective until terminated. You may terminate it at any time by destroying the program together with all copies in any form. It will also terminate upon conditions set forth elsewhere in this agreement or if you fail to comply with any term or condition of this agreement. You agree that upon such termination you will destroy the program together with all copies in any form.

Limited Warranty

The program is provided “as is” without warranty of any kind, either expressed or implied, including but not limited to the implied warranties of merchantability and fitness for a particular purpose, with the sole exception of defective diskette(s) and Express described below. The entire risk as to the quality and performance of the program is assumed by you. If the program proves defective, you (and not Pinnacle Systems, its Licensors, or its dealers) assume the entire cost of all necessary servicing, repair or correction.

Program Warranty

Pinnacle Systems warrants to the original licensee that the diskette(s) on which the program is recorded, shall be free from defects in material and workmanship only for a period of thirty (30) days from the date of original purchase. If a defect covered by this warranty occurs during this period, and it is returned to the dealer from whom it was purchased not later than five (5) days after the end of such period, the dealer shall, at its option, either repair or replace the item. This warranty is in lieu of all other express or statutory warranties, and the duration of any implied warranty, including but not limited to the implied warranties of merchantability and fitness for a particular purpose, is hereby limited to said thirty (30) day period.

Updates

Periodically Pinnacle Systems may introduce new versions or releases of the software. To qualify for notification of the availability of these new versions or releases and their prices, you must first complete and return the enclosed program registration card. All new versions or releases which are provided to you shall become part of the program and shall be governed by the terms of this license agreement.

Pinnacle Express: Index

—Numbers—

1394. *See* IEEE-1394

8mm

Video equipment,

—A—

Abbreviations and

conventions, 5

Analog

Defined, 5

Aspect ratio

For menu page

backgrounds, 27

Asset

Deleting, 12

List, 8

Menu button, 12

Renaming, 12

Asset List, 12

Assets

And Style Chooser, 28

Defined, 8

Assigning your files, 9

Audio

Importing, 28, 30

Audio file formats, 28

AVI files, 9

—B—

Background (menu page
element), 27

Background image file
formats, 27

Bring In Video

Defined, 7

Screen, 7

Source material options, 8

Bring In Video mode, 7

Burning the disc, 49

Buttons

Asset Menu, 12

Capture video, 9

Check Media, 19

Clean up (temporary
files), 50

Create Custom Menu, 30

Edit Video, 33

Help, 4

Import Video, 9

Import Still, 9

Open Drawer (on Style
Chooser), 29

Options (in Make Disc
mode), 48

Start (in Make Disc
mode), 48

- Start capture, 11
- Stop capture, 11
- Tools tips for, 4
- Transport control, 8
- C—
- Cables and connectors
 - Analog, 5
- Camcorder
 - Capturing from, 9
 - Connecting, 4
- Capture video
 - Button, 10
 - Dialog box, 10
- Captured and Imported Files window, 12
- CD-R, CD-RW, 19
- Check Media button, 19
- Clean up temporary files, 50
- Combine Scenes tool, 38
- Commentary. *See* Voice-over
- Compiling, 48
- Composite
 - Cables and connectors, 5
- Computer
 - Minimum requirements for, 2
- Connecting the camera, 4
- Conventions and abbreviations, 5
- Copying
 - Scenes and images, 37
- Counter window, 8
- Create Custom Menu button, 8
- Create Custom Menu dialog box, 30
- Create Thumbnail tool, 39
- Creating a slide show, 43
- Creating DVDs and VideoCDs
 - Three-step process, 1
- Cursor navigation
 - In TV Screen, 22
- Customizing menu pages, 30
- D—
- Delete Scene tool, 12
- Deleting
 - Assets, 12
- Dialog boxes. *See* Windows
- Digital Versatile Disc. *See* DVD
- Digital8
 - Included under "DV", 5
 - With analog tapes, 13
- DirectX
 - Graphics card, 2
 - Sound card, 2
- Disc Meter, 17
- Discs
 - Burning multiple, 49
- Disk space requirements, 2
- Dissolves, 40
- Duplicating
 - Scenes and images, 37
- Duration, 40

- Duration limits of sound files, 31
- DV
 - And automatic scene detection, 13
- DVD
 - Creation process, 1
 - Navigation buttons, 24
 - Select as output format, 18
 - Transcoding, 47
- DVD-R, DVD-RW, 19
- E—
- Edit mode, 33
- Edit Scene Options dialog box, 39
- Edit Video button, 33
- Edit Video dialog box, 34
 - Icon tab, 37
 - Thumbnail tab, 39
- Editing scenes, 41
- Editing with frame accuracy, 38
- Elements of menu pages, 25
- Equipment requirements,
 - Computer, 2
 - Hard disk, 2
- Express
 - Defined, 1
 - Registration of, 3
 - Software installation, 3
 - Software license, 3, 53
 - Technical support, 51
 - Upgrades, 3

- F—
- Fade to black (scene option), 40
- Fast Forward button, 41
- Fast Reverse button, 41
- File formats
 - Audio, 28
 - For menu page backgrounds, 31
- Files
 - AVI, 9
 - Captured and imported, 12
 - Temporary, cleaning up, 50
- FireWire. *See* IEEE-1394
- Fonts for menu page text, 30
- Frame accuracy in editing, 38
- Frame Forward button, 41
- Frame Reverse button, 41
- Frames
 - In menu page layout, 27
- G—
- Go To Beginning button, 41
- Grabber, 36
- Graphic
 - Menu page background, 27, 30
- Graphics card
 - DirectX-compatible, 2

—H—

Hard disk

Performance test, 2

Requirements, 2

Transferring video to, 2

Help. *See* On-line help

Help button, 43

Hi8

Video equipment, 5

—I—

Icon list view, 37

Navigating, 37

IEEE-1394

DV cable, 4

iLink. *See* IEEE-1394

Images

Arranging, 45

Creating a slideshow, 431

Duplicating, 37

Editing, 33

Importing, 12, 30

Intermixing with scenes,
46

Previewing, 34

Renaming, 36

Reordering, 43

Transcoding and
compiling, 48

Import Video button, 9

Import Still button, 9

Importing

Backgrounds and audio,
27-28

Files from Windows

Explorer, 46

Folders (of images files),
46

Incoming video display, 7

Installation

"Typical", 3

Camcorder, 4

Manual (without
Autorun), 3

Software, 3

Intermixing scenes and
images, 461

Introduction to Express, 1

Italics, 5

—K—

Keyboard conventions, 5

—L—

Layout (menu page element),
28

License terms, 53

List views

Introduced, 34

Multiple selection in, 35

Navigating, 35

Reordering scenes and
images, 35-36

List Views

Icon, 37

Thumbnail, 35

—M—

Make Disc Mode, 47
Managing large files, 50
Manual installation, 3
Maximum duration of sound files, 31
Media
 Checking, 19
 Choice of, 18
 Format, 18-19
 Settings, 18
Memory - minimum required, 2
Menu commands, 6
Menu page
 Defined, 25
Menu pages, 25
 Aspect ratio of background, 27
 Background, 27
 Creating discs without, 29
 Customizing, 30
 Elements of, 25-28
 Frames, 27
 Importing audio files, 28
 Layout, 26
 List views, 34
 Multiple, 34
 Navigating, 35, 37
 Renaming scenes, 36
 Thumbnails, 35
Minimum duration of sound files, 31

Mixing scenes and still images, 46
Modes
 Bring In Video, 7
 Edit, 33
 Make Disc, 47
Mouse clicking, 6
Movie controls
 On Remote Control, 24
MPEG-1, MPEG-2, 47
Music,
 File formats, 28
 Importing, 28
—N—
Narration. *See* Voice-over
Navigating
 Icon list view, 37
 Thumbnail list view, 35
Navigating menu pages, 22-24
Navigation
 Buttons (DVD), 24
 In the Style Chooser, 27
 In TV Screen, 21-24
No Menu
 Style Chooser option, 29

—O—

OHCI-compliant IEEE-1394.

See IEEE-1394

On-line help

Button, 4

How to use, 4

Types of, 43

On-screen remote control.

See Remote control

Open Drawer button (Style

Chooser), 29

Operating systems

supported, 2

Options

For Bring In Video, 8

Scene, 39

Scene detection, 13

Options button (in Make

Disc mode), 48

Output media

Format, 18

Output Media Settings

dialog box, 18

Overview, 1

—P—

Pause button, 40

Play button, 401

Playback controls

Frame Forward/Reverse,
41

Play/Pause, 40

Scrubber, 40

Fast Forward, 41

Fast Reverse, 41

Go To Beginning, 41

Player (in Edit Video dialog
box), 40

Positioning of frames and
titles, 30

Preview window (video
capture), 12

Preview/Edit mode, 15

Project

Editing, 33

Previewing, 15

Transcoding and
compiling, 48

—R—

RAM, 2

RCA. *See* Composite

Recycle Bin tool, 38

Registration

And technical support, 3

Of Express, 3

Remote Control, 16

Navigation in TV Screen,
22

Number pad, 23

Renaming

Assets, 12

Images, 36

Scenes, 36

Reordering

Scenes and images, 36

Requirements, equipment, 2

Return to menu (scene
option), 40

—S—

Scene

- Defined, 5
- Selected, 36

Scene detection

- Explained, 13
- Options, 13
- Options dialog box, 13
- Thumbnail frames, 39

Scene Options tool, 39

Scenes

- Arranging, 36
- Duplicating, 37
- Editing, 41
- Editing options, 381
- Intermixing with images, 46
- Playing back, 22
- Previewing, 34
- Renaming in list view, 36
- Reordering, 36
- Titles of, 35
- Trimming, 41

Scrubber, 40

Selected scene (indicated by highlighted frame), 24

Serial number, Express, 3

Setup. *See* Installation

Show title (scene option), 40

Slideshow, 43

- creating, 43
- Intermixing scenes and images, 46

Software

Installing, 3

Upgrades, 3

Software license terms, 3

Software registration

- Importance of, 3

Sound

- Effects, 28
- File formats, 28

Sound card

- DirectX-compatible, 2

Sound effects

- Importing, 28

Source material options, 8

Split Scene tool, 38

Start button (in Make Disc mode), 48

Start capture button, 10

Still images. *See* Images

Stop capture button, 102

Style Chooser, 28

- Drawer, 29

- Navigating, 28

- No Menu option, 29

Styling menu page text, 30

Super-VideoCD. *See* S-VCD

S-VCD

- Described, 18

- Select as output format, 18

- Transcoding, 47

SVHS, SVHS-C

- Video equipment, 5

S-Video

- Cables and connectors, 5

—T—

Tapes. *See* Videotapes

Technical support, 3, 51

Television. *See* TV Screen

Templates (for menu page layout), 26

Text style (menu page element), 26

Thumbnail list view, 35

 Navigating, 35

Thumbnails

 Changing, 39

 Defined, 12

 During capture, 11

 Frames for, 27

 In Style Chooser, 27

 On menu pages, 22

 Style, 29

Titles

 Automatically assigned,
 34

 Changing, 36

Tool tips, 4

Tools

 Combine Scenes, 38

 Create Thumbnail, 39

 Delete Scene, 38

 Edit Scene Options, 39

 Recycle Bin, 38

 Split Scene, 38

 Uncombine Scenes, 38

Transcoding, 48

Transition effects, 40

Transport controls, 8

Trimming scenes, 41

TV Screen, 16, 21

 Navigation options, 22-24

Typical installation, 3

—U—

Uncombine Scenes tool, 38

Upgrades

 Information about, 3

—V—

VCD

 Described, 18

 Media type selection, 18

 Select as output format, 18

 Transcoding, 47

VCR

 Capturing from, 9

VHS, VHS-S

 Video equipment, 5

Video

 Displayed during capture,
 10

Video capture

 Capture video button, 9-10

 Dialog box, 10

 Hard disk requirements, 2

 Preview window, 10

 Starting, 11

 Stopping, 11

 Thumbnail frames, 11

Video equipment

 Analog, 5

 Installation, 4

Video file, 5

Video scenes. *See* Scenes

- VideoCD. *See* VCD
 - Creation process, 1
- Videotape
 - Current position, 8
- Videotapes
 - Analog, and scene detection, 13
 - DV, 13
- Voice-over, 28
- W—
- Windows
 - Capture Progress dialog box, 10
 - Capture Video dialog box, 10
 - Captured and Imported Files, 12
 - Counter (on transport controls), 8
 - Create Custom Menu dialog box, 30
 - Edit Scene Options dialog box, 11
 - Edit Video dialog box, 34
 - Making the Disc, 47
 - Output Media Settings dialog box, 18
 - Scene Detection Options dialog box, 13
 - The Player, 40
- Windows (operating system)
 - Versions supported, 2
- Windows Explorer, 45

