

T-Mobile

Welcome

Start Guide



SAMSUNG **Gear S3** frontier

Table of Contents

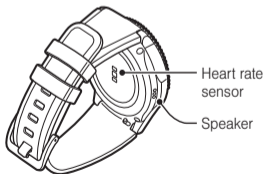
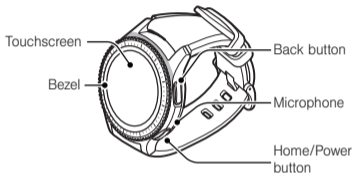
1	Device layout
2	Charge device
3	Pair
5	Navigation
6	Customization
9	Status panel
10	Apps screen
11	Widgets
12	Notifications
13	Phone
16	Messages
19	S Health

21 Find my device

22 Samsung Pay

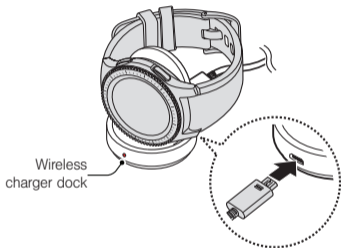
Device layout

To turn on the Gear S3, press and hold the **Home/Power** button.



Charge device

Fully charge the Gear S3 before using it.



Pair

Download the Samsung Gear app


- ◆ To connect the Gear S3 to a smartphone, download the Samsung Gear app onto your smartphone from **Galaxy Apps** or the **Google Play™** store.

Compatible with select devices using Android 4.4 and later with at least 1.5 GB RAM. Supported devices may vary by carrier and device. Some features may not be available. For best results, connect with compatible Samsung Galaxy devices. For a list of compatible smartphones, please visit samsung.com/gearS3.

Pair the Gear S3 to a smartphone

1. Ensure the Gear S3 is on.

From the smartphone:

2. Turn Bluetooth® on.
3. Open the **Samsung Gear** app  and tap **CONNECT TO GEAR**.
4. Confirm the passkey on both devices, and tap **OK**.
5. Follow the prompts to complete the setup.

Navigation



- **Rotate** the bezel left to view notifications, or rotate it right to view widgets.

Swipe left to view widgets or right to view notifications.

- **Rotate** the bezel to highlight an application and then tap the application to open it.
- **Rotate** the bezel right or left to return to a previous screen.
Swipe left or right to return to a previous screen.

Customization

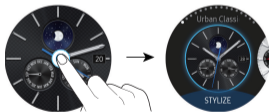
Always on

Set the Gear S3 to always display the watch screen.

- ◆ From the Apps screen, tap **Settings**  → **Style** and tap **Watch always on**.

Change watch faces

1. From the Watch screen, touch and hold the screen.



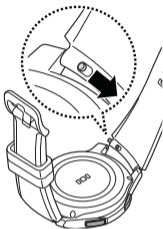
2. Rotate the bezel or swipe to scroll through watch faces.

3. Tap a watch face to select it, and then tap **OK**.

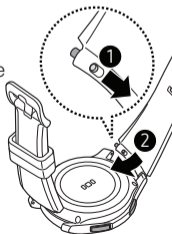
Note: Tap **STYLIZE** to customize the watch. To download additional watch faces directly from the Gear S3, tap **Get more watch faces**.

Change watch bands

1. To remove, push the pin tab inward to release the strap.



2. To connect, push the pin tab inward while aligning the strap with the pin holes.



Status panel

View the current status and configure basic settings.

- ◆ From the Watch screen, swipe down from the top edge.



- 🎵 Plays music saved on the Gear S3 or smartphone.
- ☎ Forward calls from your Gear S3 to your phone.
- ✈ Disconnects the device from all networks in Airplane mode.
- 🔕 Turns off vibration, incoming calls, and alerts in Do not disturb mode.
- 🔊 Adjusts the device volume.
- ⚙ Adjusts the screen brightness.

Apps screen


The Apps screen displays icons for all apps.

1. From the Watch screen, press the **Home** button to open the Apps screen.
2. To view additional panels, rotate the bezel, or swipe left or right.




Widgets

Add widgets

- ◆ From the Widget screen, scroll to the end, tap  then select a widget.



Remove widgets

- ◆ Tap and hold a widget and then tap .

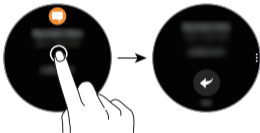


Notifications

Stay up to date with events, notifications, and messages.

View a notification

When a notification is received, tap the notification to view details.



Delete a notification


While viewing a notification, swipe up from the bottom edge of the screen to delete.



Phone

Use the Gear S3 to make and answer calls.

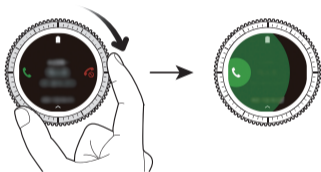
Make a call

- ◆ Tap **Apps** → **Phone** → enter a number using the keypad, and then tap .


Note: To use calling features, the Gear S3 must be paired with a smartphone and connected using Bluetooth.

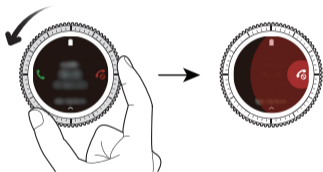
Answer a call

- ◆ To answer an incoming call, rotate the bezel right or swipe right to **Answer** 📞.



Reject a call


- ◆ To reject an incoming call, rotate the bezel left or swipe left to **Reject**  and send the caller to voice mail.




Messages

View and reply to messages, or call the sender using the Gear S3.

View messages



1. From the Apps screen, tap **Messages** .
2. Scroll through the message list. Tap a message to view the conversation.

Reply to a message

- ◆ Tap  to reply with a preloaded quick response or tap one of the following options:

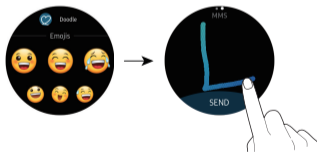


Voice input


Tap  and speak to enter a message.
To change the language recognized, tap **Options**  → **Language**.

Emoticons

Tap  and select the emoticon to send or tap **Doodle**  at the top of the screen, to draw the message.



Handwriting and keyboarding

Tap  to open handwriting mode and write on the screen.



Rotate the bezel to enter text using the keyboard.



S Health

S Health helps you manage wellness and fitness.

Steps

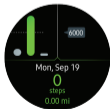
Count the number of steps taken, and measure the distance traveled.

1. From the Apps screen, tap **S Health** .

2. Rotate the bezel clockwise to open the steps tracker.





Tap the screen to view a graph of the step count records.



Heart rate

Measure and record your heart rate.



1. From the Apps screen, tap **S Health** .
2. Rotate the bezel clockwise and open the heart rate tracker screen.
3. Tap  to begin measuring your heart rate. After a moment, your current heart rate will be displayed on the screen.





Find my device

If the Gear S3 or the connected smartphone is misplaced, use the Samsung Gear app to find it.

Find my Gear S3

1. From the smartphone, tap **Samsung Gear**  → **Find my gear**.
2. Tap **Start** .


Find My Phone

1. From the Gear S3 Apps screen, tap **Find My Phone** .
2. Tap **Start** .


Samsung Pay

Pay almost anywhere that accepts a debit, credit, or gift card.

Set up

1. From the Gear S3, press and hold the **Back** button to launch **Samsung Pay**  .
2. Rotate the bezel to the right to and follow the prompts to complete the setup.

Make a payment

1. From the Gear S3, press and hold the **Back** button to launch **Samsung Pay**  .
2. Enter the four-digit PIN you set up previously.

3. When the card is displayed, tap **Pay** and hold the Gear S3 near the terminal.



Important: Use the Samsung Pay application for up to 5 transactions without the smartphone. This may vary depending on the bank/ institution issuing the account.

APPROVED FIRMWARE VERSIONS

This device will only operate with firmware versions that have been approved for use by T-Mobile and the device manufacturer. If unauthorized firmware is placed on the device it will not function.

ADDITIONAL INFORMATION

Use of some content or features may incur separate, additional charges and/or require qualifying service, or access to a Wi-Fi connection.

Coverage not available in some areas. See **Terms and Conditions (including arbitration provision)** at T-Mobile.com, for rate plan information, charges for features and services, and restrictions and details.

T-Mobile®

©2016 Samsung Electronics America, Inc. Samsung and Samsung Gear S are both trademarks of Samsung Electronics Co., Ltd. LTE is a trademark of ETSI. T-Mobile and the magenta color are registered trademarks of Deutsche Telekom AG. Other company and product names mentioned herein may be trademarks of their respective owners. Device and screen images simulated. Appearance of device may vary.



GH68-46972A
Printed in Vietnam
TCS534369.1

