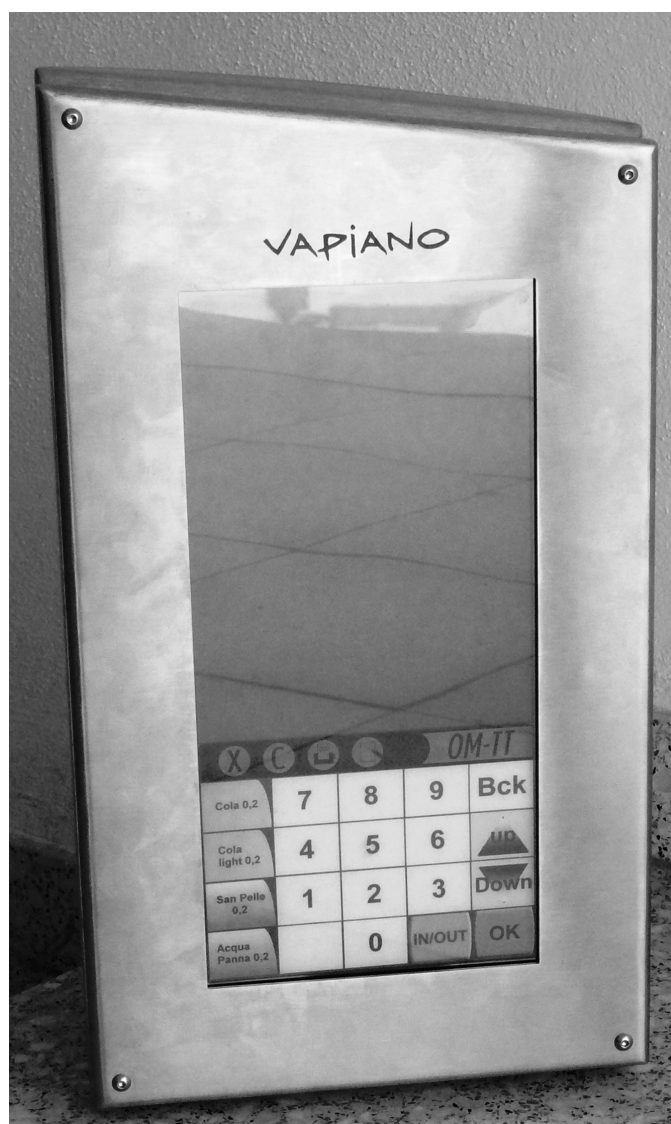


User Manual

 ORDERMAN®

Touch Terminal



© 2005 by



Bachstraße 59,
5023 Salzburg – Österreich

www.orderman.com

Errors and misprints excepted.
Copyright, all rights reserved.
Duplication, reproduction or distribution, even in part, is prohibited without the written consent
of think dig high tech solutions gmbh.

P3.65-088 V1.0

- think dig assumes no responsibility for injuries or losses resulting from the utilization of these instructions.
- think dig assumes no responsibility for losses or claims by third parties resulting from the use of the charging station.
- The contents of these instructions are subject to changes, which can be carried out without prior notice.
- These operating instructions do not constitute part of a contract.
- Any changes or modifications not expressly approved by the party responsible for compliance could void the user's authority to operate the equipment.

Windows, Windows CE and ActiveSync are registered trademarks from Microsoft Corporation.
Products and corporate names appearing in this manual may or may not be registered trademarks or copyrights of their respective companies and are used only for identification or explanation and to the owners' benefit, without intent to infringe.

1	Introduction of the ORDERMAN®-Touch Terminal.....	4
2	The MenuCard.....	5
2.1	The ORDERMAN® Toolbar	5
3	The Operating system of the ORDERMAN®-Touch Terminal.....	6
3.1	The Windows CE licence	6
3.2	The Desktop	6
3.3	The Start menu	7
3.3.1	Run	7
3.3.2	Help.....	7
3.3.3	Settings	7
3.3.4	Programs	7
3.4	The Taskbar Icons	7
3.5	The Input Panel.....	8
3.6	MyComputer	8
3.7	The Control Panel	8
4	Saving files and settings (registry)	8
5	HowTo	9
5.1	Connect the OM-TT to a Local Area Network.....	9
5.2	Active Sync	10
5.3	Use the Registry Editor	11
5.4	Install a Compact Flash Card	11
5.5	Install a program	11
5.6	Remove a program	11
5.7	Save system settings / changes in the registry.....	12
5.8	Change the MenuCard.....	12
5.9	Change the Keyboard layout.....	12
5.10	Re-calibrate the touch.....	13
5.10.1	Calibrate by using the Control Panel.....	13
5.10.2	Shortcut to the touch calibration.....	13
5.11	Starting Programs at Start Up	14
5.12	Add a Link to the Desktop	14
5.13	Change the background image of the Desktop	14
5.14	Hide the Taskbar.....	14
5.15	Use Remote Desktop / RDP.....	14
5.15.1	Automatic start of the Remote Desktop Connection	15
5.16	Restart the ORDERMAN® Touch Terminal	16
5.17	Set the ORDERMAN® Touch Terminal back to factory defaults	16
6	Programs on the ORDERMAN® Touch Terminal	16
6.1	OM-TT Process Viewer.....	16
6.2	SDAuthUtilDevice	17
6.3	RegClear.....	17
6.4	RegFlush	17
6.5	RegEditSave.....	17
6.6	Installation Backup / FileSystemWatcher	17
6.7	TextEditor	17
6.8	OMTTHWManager.....	17
7	Special Files/Folders on the ORDERMAN® Touch Terminal.....	18
8	FAQ's	19
8.1	What's the Installation Backup good for ?	19
8.2	My settings are lost after re-starting the system.	19

1 Introduction of the ORDERMAN®-Touch Terminal



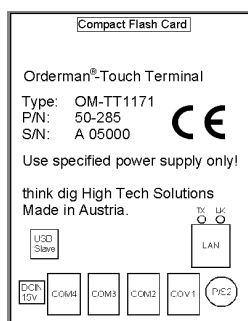
The ORDERMAN®-Touch Terminal contains the following interfaces:

External interfaces:

- 1x Ethernet 100Mbit, 100 Base-TX, RJ45
- 4x Serielle Ports RS232, RJ 11
- 1x PS/2 keyboard
- 1x Compact Flash Card Type 1
- 1x USB-Slave

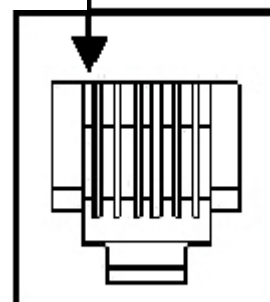
Internal interfaces for optional hardware:

- 1x Waiterlock
- 1x OM-TT customer VFD 140 x 16 Dots
- 1x ORDERCARD® reader



The location of the interfaces can be found on the serial number sticker.

Pin assignment of the serial ports
Pin 1



Pin 1...RTS
Pin 2...TxD
Pin 3...RxD
Pin 4...CTS
Pin 5...GND
Pin 6...NC

NC... Not connected

2 The MenuCard

The MenuCard (e.g. figure on the right) is part of the ORDERMAN® Touch Terminal and can be configured for your specific purpose.

Use the ORDERMAN® MenuCardDesigner to create your MenuCard.

(Detailed description for using the ORDERMAN® MenuCardDesigner see its online help)

Hot Drinks		Starters		Main Course	
Non Alc		Salad		Sweets	
Beer 0,3	Beer 0,5	Apple Juice	Fresh Orange	Fanta medium	Sprite medium
Water sparkling	Espresso single	Espresso double	Cappuccino	Hot Chocolat	Tea
Menu 1	Menu 2	Soup of day	Mixed Grill	Rump Steak	Roast Beef
Greek Salad	Mixed Salad	Pizza	Spaghetti	Lasagne	Quiche

2.1 The ORDERMAN® Toolbar

The Toolbar contains five buttons with fix Scancode which can be used for your specific purpose.



Scancode 101



Scancode 102



Scancode 103



Scancode 104



Scancode 105

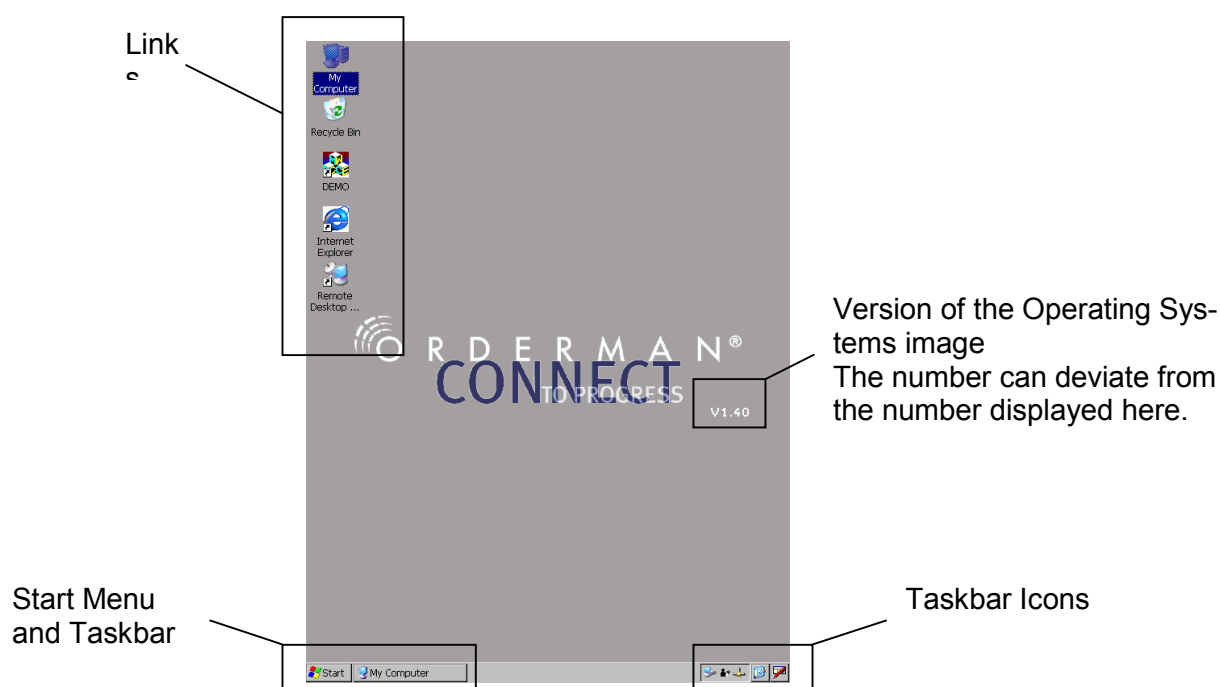
3 The Operating system of the ORDERMAN[®]-Touch Terminal

The ORDERMAN[®]-Touch Terminal is running Microsoft WindowsCE 4.2, so working is comparable to your desktop PC. Here only some parts of Windows are brought up for a detailed description of Microsoft WindowsCE see the Microsoft Help (see "[3.3.2 Help](#)").

3.1 The Windows CE licence

The Microsoft Windows CE licence can be found on the sticker on the bottom side of your ORDERMAN[®]-Touch Terminal.

3.2 The Desktop

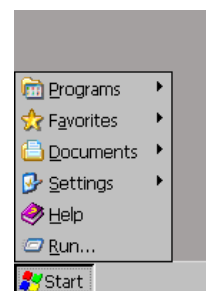


The Desktop is the screen that is displayed after starting the ORDERMAN[®]-Touch Terminal. The Desktop contains things like the Start Menu or Links. For adding a link to the Desktop see "[5.12 Add a Link to the Desktop](#)"

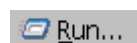
3.3 The Start menu

The Start menu contains the following items which are described below.

Programs
Favorites
Documents
Settings
Help
Run



3.3.1 Run

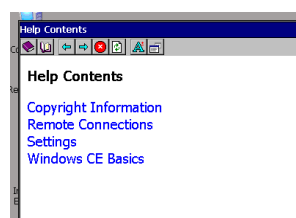


Run is used to launch programs.

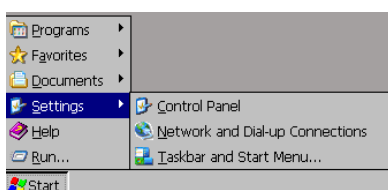
3.3.2 Help



Via the Help link you can open the Microsoft WindowsCE Help which contains common Help topics like connecting to a local area network.



3.3.3 Settings



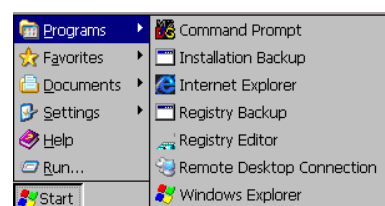
The Settings folder contains links to

- Control Panel (see [“3.7 The Control Panel”](#))
- Network and Dial-Up Connections (see [“5.1 Connect the OM-TT to a Local Area Network”](#))
- Taskbar and Start Menu (see Microsoft Help).

3.3.4 Programs

The Programs section of the Start Menu contains this entries by default.

- Command Prompt: starts the DOS shell for those who dislike the Windows Explorer.
- Installation Backup: see [“5.5 Install a program”](#)
- Internet Explorer: visit the www (see Microsoft Help)
- Registry Backup: see [“5.7 Save system settings / changes in the registry”](#)
- Registry Editor: see [“5.3 Use the Registry Editor”](#)
- Remote Desktop Connection: see [“5.15 Use Remote Desktop / RDP”](#)
- Windows Explorer (see Microsoft Help)



3.4 The Taskbar Icons





An Active Sync connection is established. See [“5.2 Active Sync”](#)



The ORDERMAN® Touch Terminal is connected to a LAN. (see [“5.1 Connect the OM-TT to a Local Area Network”](#))



The LAN connection is interrupted (see [“5.1 Connect the OM-TT to a Local Area Network”](#))



The OMTTHWManager is running. (see [“6.8 OMTTHWManager”](#))



Tapping this button brings the Desktop to the front.

[e Input Panel”](#))

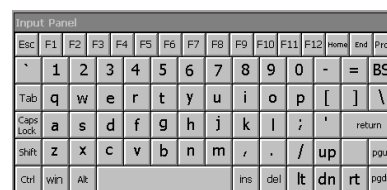


Tip

The Taskbar Icons section can deviate from this figure, this depends on the programs running on the ORDERMAN® Touch Terminal.

3.5 The Input Panel

The Input Panel is a virtual keyboard on your screen which can be used, for example, to enter a password without connecting a real keyboard to your ORDERMAN® Touch Terminal.



Large Keyboard

3.6 MyComputer



The MyComputer link leads you to the root directory of your ORDERMAN Touch Terminal.

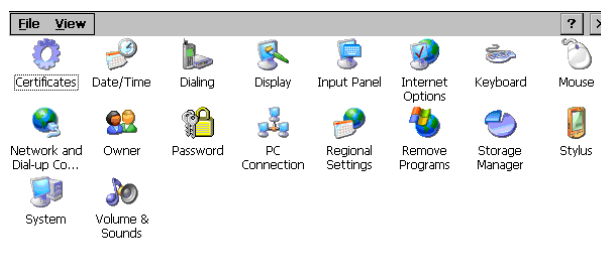
Here you can access e.g. the FlashDisk or the Harddisk/CompactFlash Card (option). For using MyComputer respectively the Windows Explorer see the Microsoft Help.

3.7 The Control Panel



Control Panel You can access the Control Panel via the link in the Start Menu (see [3.3 The Start menu](#)) or through MyComputer and the Windows Explorer.

The Control Panel allows users to set a variety of system-wide properties, such as network setup, and the desktop color scheme. For a detailed description of the Control Panel see the Microsoft Help.



4 Saving files and settings (registry)

The ORDERMAN® Touch Terminal consists of a RAMdisk, a Flashdisk and an optional Harddisk (CompactFlash card).

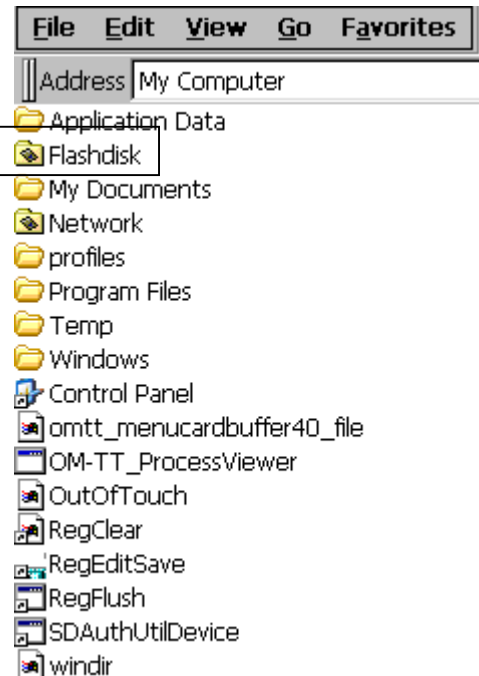
This is important if you want to make changes to the system (e.g. Create a link on the Desktop), the registry or install any software.

All settings, files and folders except the Flashdisk and the Harddisk (CompactFlash card) are saved in RAMdisk. This means everything installed into RAMdisk that don't belong to the default image of WindowsCE is lost after a restart of the system or a power failure (blackout).

Files copied to the Flashdisk directory are save in case of a system restart.

The Flashdisk, the Harddisk (optional CompactFlash card) can be used to save your data.

All other directories are placed in RAMDisk and are not safe in case of a system restart.



- Although you install something to the Flashdisk or Harddisk with an installation routine, some files may be copied to the Windows directory (RAM-Disk). To avoid to loose this data you have to run Installation Backup (Start => Programs => Installation Backup).
- If you change settings e.g. if you change the background image on the Desktop, you have to save the registry with the Registry Backup tool (Start => Programs => Registry Backup).
- If you don't use the installed registry editor to change the registry you have to save the registry with the Registry Backup tool witch can be found in the Programs section of the Start Menu (Start => Programs => Registry Backup).



After committing changes in the Systemsettings call the Registry Backup. See [„5.7 Save system settings / changes in the registry“](#)

5 HowTo

5.1 Connect the OM-TT to a Local Area Network

Connect the ORDERMAN® Touch Terminal to your network by using a network cable.



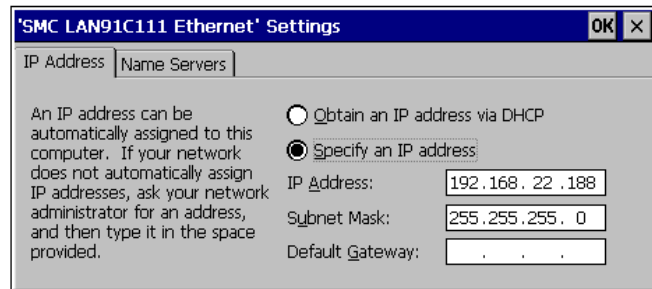
Open the Control Panel (see “[3.7 The Control Panel](#)”) and double tap the Network and Dial-up Connection button.



Open the settings for the Network connection by double tapping the button.

If your network uses DHCP select “Obtain an IP address via DHCP”, otherwise enter a correct IP Address and Subnet Mask to the form.

For details and questions about networks, DHCP or which IP Address to use see Microsoft Help and/or ask your network administrator.



5.2 Active Sync

Active Sync is a program used to synchronize your device to a Desktop PC and/or a Server. You can download Active Sync from the Microsoft homepage.



You need at least Active Sync V3.7.



The grey icon indicates that Active Sync is available.

Connect the ORDERMAN® Touch Terminal to your PC by using an USB cable.



The Active Sync icon changes to connected (green).



If you are asked to set up a partnership select “NO”.

After that you can access the ORDERMAN® Touch Terminal with your Explorer or the Explore button in the Active Sync Window.

5.3 Use the Registry Editor

Launch the Registry Editor out of the “Programs” section of the “Start Menu” or the “RegistryEditSave” shortcut in the “My Computer” section.

After changing the registry settings you have to save the changes to the flashdisk.

This can be done by tapping “Registry Backup” in the “Programs” section of the “Start Menu”.

5.4 Install a Compact Flash Card

The CompactFlash Card slot on the ORDERMAN® Touch Terminal is NOT “Hot Plug&Play”. This means you have to disconnect power before inserting a CF card.

5.5 Install a program

Copy the files to the ORDERMAN® Touch Terminal by using e.g. an ActiveSync connection. You can also copy it to a CompactFlash card (option).

Install the files to Flashdisk or Harddisk.

After the installation has completed you have to initiate a backup copy of files copied to the windows directory and save registry settings.

Tap Start => Programs => Installation Backup.

(see [“4 Saving files and settings \(registry\)”](#) for details)



Tip

If you install anything on the ORDERMAN Touch Terminal you have to copy/install it to the Flashdisk or the Harddisk and run the Installation Backup. Otherwise it is not guaranteed that the installed program works correct. (see [“4 Saving files and settings \(registry\)”](#) for details).

5.6 Remove a program



Remove Programs

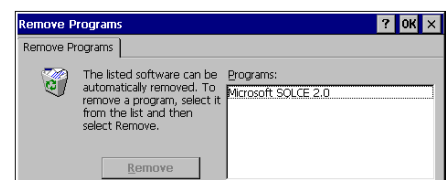
Select the Remove Programs button in the Control Panel. (How to enter the Control Panel see [3.7 The Control Panel](#))



Tip

Only programs which were installed with an installation routine (*.cab files) are listed up here.

- Select the program you want to uninstall in the list by tapping on it.
- Tap the “Remove” button in the dialog.



- Tap “Yes” to confirm that the program is removed.
- After the program is uninstalled call the Installation Backup out of the Programs section in the Start Menu. This is required to delete the backup files of the installation. (“[4 Saving files and settings \(registry\)](#)” for details).

5.7 Save system settings / changes in the registry

See “[4 Saving files and settings \(registry\)](#)”

To ensure that your changes in system settings (e.g. You have set the Taskbar to be always visible or changed the view options of the Explorer) are available after restarting the system you have to call Registry Backup in the Programs section of the Start Menu.

5.8 Change the MenuCard

For details of the MenuCard see “[2 The MenuCard](#)” first.

You can only change the MenuCard if your software supports this feature. For details please see its manual.

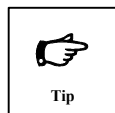


Information

Information for developers:

There are two ways to change the MenuCard:

- You can use the OMTTHWHandler to change the MenuCard by software (see its documentation for details).
- Copy the “omtt.bly” file to Flashdisk\ORDERMAN\MenuCard and replace the existing file. After that tap the LoadMC link. Now you can use the new MenuCard file.



Tip

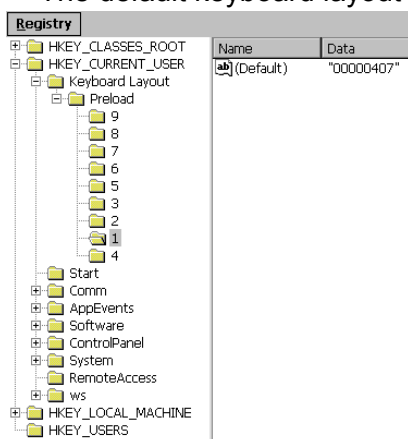
The name of the MenuCard file has to be “**omtt.bly**”.

5.9 Change the Keyboard layout

For using a special character set on your keyboard e.g. the german “Ö” you have to change the keyboard layout to this language.

See the table for available keyboard layouts.

The default keyboard layout is 00000407 - German.

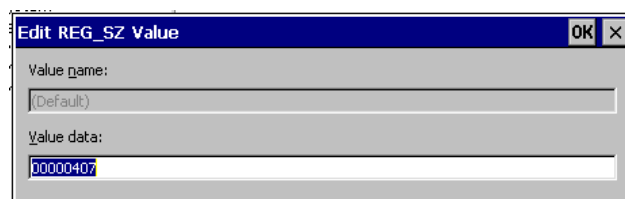


For changing the Keyboard layout open the RegistryEditor in the Programs section of the Start Menu.

Go to HKEY_CURRENT_USER => Keyboard Layout => Preload => 1

Double tap Default in the right column and enter the Value of the keyboard layout you want to use.

Tap OK to confirm your settings.



Close the RegistryEditor by tapping Exit in the Registry Menu.

After closing the Registry Editor you receive a message box. Tap Yes to save the registry to internal flash. (for details see [“4 Saving files and settings \(registry\)”](#))

5.10 Re-calibrate the touch

5.10.1 Calibrate by using the Control Panel



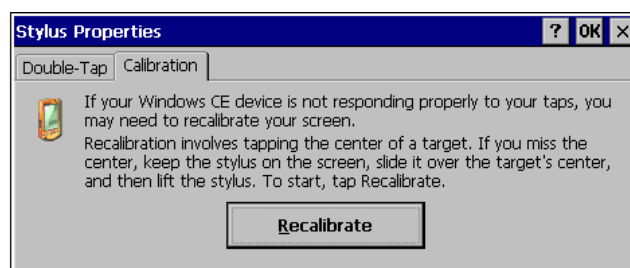
Stylus

Double tap the Stylus button in the Control Panel. (How to enter the Control Panel see [“3.7 The Control Panel”](#))

Select the Calibration tap in the Stylus Properties and tap the “Recalibrate” button.

Follow the instructions on the screen and save the calibration.

Exit the Stylus Properties with the “OK” button. (For more information see the Microsoft Help)



Italian	00000410
Croatia	0000041a
Spanish int.	00000c0a
UK	00000809

5.10.2 Shortcut to the touch calibration

- Tip and hold down anywhere on the touch.
- Switch Off the ORDERMAN® Touch Terminal with the ON/OFF button (see [“1 Introduction of the ORDERMAN®-Touch Terminal”](#))
- Switch On again
- Release the touch.
- Now you are in the touch calibration mode. Follow the instructions on the screen.
- Save the settings after finishing calibration.



Tip

Use the ORDERMAN®-touch pen for calibration. Only precise calibration insures precise operation.

5.11 Starting Programs at Start Up

Copy your file or link to “\Flashdisk\Autostart”. This ensures that all optional hardware components are available.

5.12 Add a Link to the Desktop

Create the link on the Desktop and run the Installation Backup.
For details how to create a link see Microsoft Help.

(See “ [4 Saving files and settings \(registry\)](#)”)

5.13 Change the background image of the Desktop

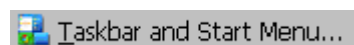
- Go to the Desktop.
- Tip and hold down the touch.
- Open the properties.
- Tap the “Browse” button and select a bitmap file (*.bmp)
- Tap “OK” and save the changes to the registry with the Registry Backup in the Programs section of the Start Menu.



You can also enter the display properties via the Control Panel.

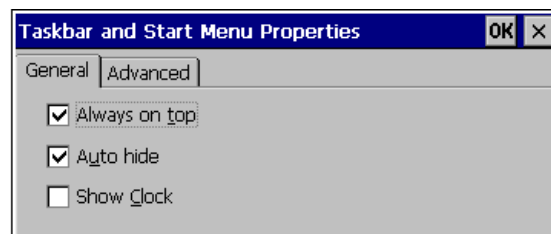
The “Orderman_Logo.bmp” (background image) is saved in the “Windows” directory .

5.14 Hide the Taskbar



Open the “Taskbar and Start Menu” in the “Settings” part of the “Start Menu”.

(Start => Settings => Taskbar and Start Menu)
In the properties uncheck the “Always on top” control box and enable the “Auto Hide property”.

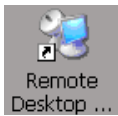


5.15 Use Remote Desktop / RDP

Remote Desktop is used to connect to a terminal server or a computer running remote desktop. For details to RDP see Microsoft Help and/or ask your administrator.

For using Remote Desktop you need a computer running remote desktop Server and a network connection. (see “ [5.1 Connect the OM-TT to a Local Area Network](#)”).

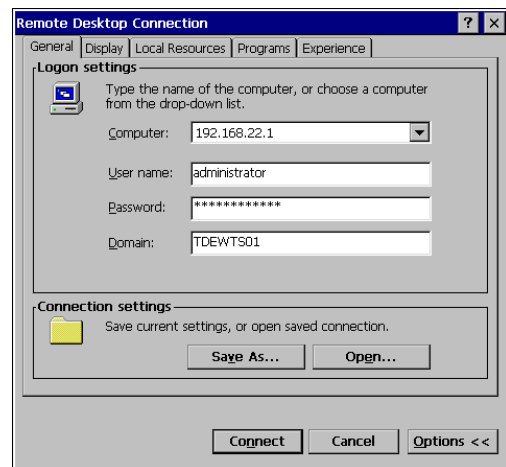
Before opening you have to configure the connection.



Open the Remote Desktop Connection link on the Desktop or via the Programs section in the Start Menu and Expand the Options section.

In the General tab you have to enter the IP – Address of the remote Computer, your user name, password to login and the domain you are working in.

Here you can also save your connection settings.



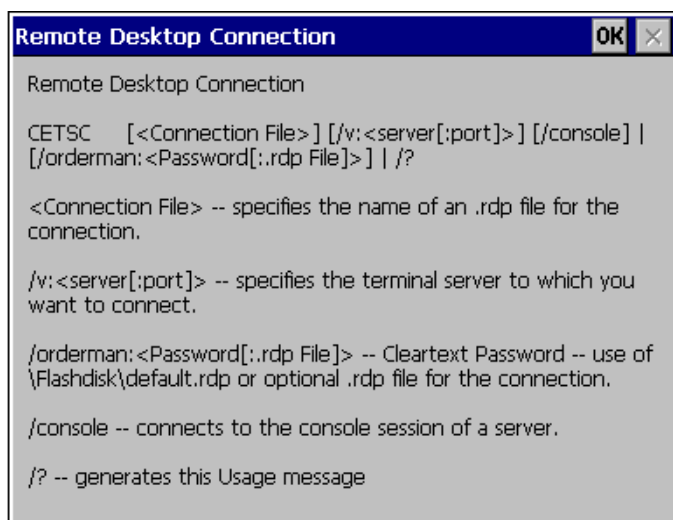
- In the Display section of the Remote Desktop Connection settings you can disable the connection bar
- The Local Resources section holds the settings for connecting the serial Ports or your disk drives of the ORDERMAN® Touch Terminal to the remote computer.
- The Experience form holds the settings to optimize performance for your connection speed
- In the Program section you can enter an application to run after connecting to the remote Computer



After configuring your Remote Desktop Connection you have to save your setting.

5.15.1 Automatic start of the Remote Desktop Connection

Because the password isn't saved in the configuration file, the ORDERMAN® Touch Terminal uses a modified version of the RDP-client to simplify the start-up of your Remote Desktop Connection. (cetsc.exe can be found in the windows directory)



Parameters to start CETSC.exe

To start the Remote Desktop Connection automatically use the following parameters:

/orderman:<password[:<connection file>]>

e.g. :

\windows\cetsec.exe /orderman:1234:\flashdisk\myRDPSettings.rdp

5.16 Restart the ORDERMAN® Touch Terminal

Hold down the ON/OFF Button (approximately 6 sec.) until you here the buzzer, than release the ON/OFF Button.

5.17 Set the ORDERMAN® Touch Terminal back to factory defaults

This resets the settings / registry of your ORDERMAN® Touch Terminal. All installed programs are lost and must be re-installed. The Registry is set back to default.

- Go to "My Computer" (the root directory).
- Start "RegClear".
- Follow the screen instructions.

6 Programs on the ORDERMAN® Touch Terminal

6.1 OM-TT Process Viewer

You can find the "OM-TT Process Viewer" in "My Computer".
The OM-TT Process Viewer can be used to end running processes.



This tool is for software developers only.

6.2 SDAuthUtilDevice

You can find it in “My Computer”



This tool is for software developers only.

6.3 RegClear

You can find it in “My Computer”

This program resets the system. All installed programs and settings are lost.

See [“5.17 Set the ORDERMAN® Touch Terminal back to factory defaults”](#)

6.4 RegFlush

You can find it in “My Computer”.

“RegFlush” creates a backup of the registry.

6.5 RegEditSave

“RegEditSave” can be found in “My Computer”.

“RegEditSave” launches a registry editor, that automatically creates the backup for the registry.

For details see [“4 Saving files and settings \(registry\)”](#)

6.6 Installation Backup / FileSystemWatcher

The “Installation Backup” link in the “Start Menu” starts the “FileSystemWatcher.exe”. This Program can be found in the “Windows” directory. It is used to create a backup of installed programs. For details see [“4 Saving files and settings \(registry\)”](#)

6.7 TextEditor

The “TextEditor” can be found in the “Flashdisk\ORDERMAN” directory.

6.8 OMTTHWManager



This section is for software developers only.

The “OMTTHWManager” is a software running on the ORDERMAN® Touch Terminal which handles the optional hardware, the keyboard and the MenuCard. You can access the “OMTTHWManager” with the “OMTTHWHandler” (part of the Integration Package provided by Think Dig).

The following settings can be taken in the configuration file of the OMTTHWManager (Flash-disk\ORDERMAN\OMTTHWManager\OMTTHWManager.exe.config)

- ServerTCPSocketPort

The Port used by the OMTTHWManager. This has to go conform with the settings of the OMTTHWHandler.

- StartupType

This starts the OMTTHWManager visible or hide.

- HardwarePort

This setting must not be changed.

- Transponder_Animation:

Enable or disables the animation during the Transponder is running. (the Transponder is optional)

- AutoWaiterLockWakeUp

This enables or disables the waiter lock wake up.

7 Special Files/Folders on the ORDERMAN® Touch Terminal

These files are necessary to guarantee that the ORDERMAN® Touch Terminal runs correctly and must not be changed.

- Windir.txt
- Omtt_menucardbuffer40_file
- OutOfTouch
- Flashdisk\Windows:

A System required folder that must not be changed.

- Flashdisk\ORDERMAN\

“Flashdisk\ORDERMAN\” contains the following sub folders:

- \AVR: A System required folder that must not be changed.
- \MenuCard: This folder contains the definitions for your Menu Card.
See “[2 The MenuCard](#)” for details.
- \OMTTHWManager:

A System required folder that must not be changed.
See “[6.8 OMTTHWManager](#)” for details.

8 FAQ's

8.1 What's the Installation Backup good for ?

See “[4 Saving files and settings \(registry\)](#)”

The Installation Backup creates a backup file for your current settings and installed programs.

If you restart your ORDERMAN® Touch Terminal your settings are restored.

8.2 My settings are lost after re-starting the system.

See „[4 Saving files and settings \(registry\)](#)” section.