

5 Omni-Directional Antennas

5.1 Omni-Directional Antenna for 2.4 GHz band

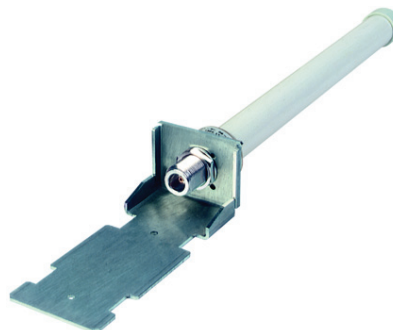
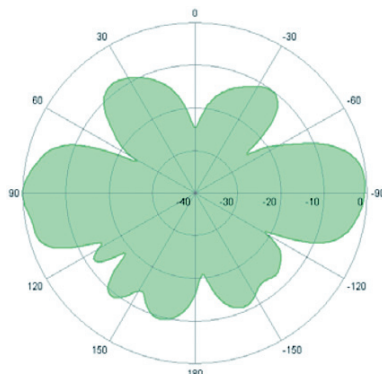
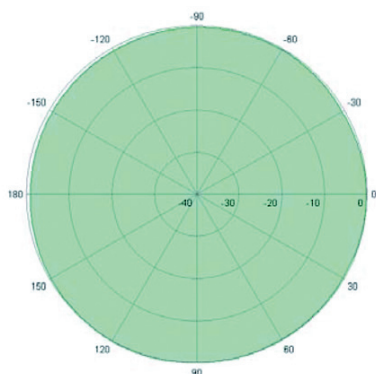
■ BAT-ANT-N-6G-IP65

Order Number: 943 981-002

Radiation Pattern

horizontal

vertical



To be placed in the middle of the illuminated area.
Indoor and outdoor use is possible.

Frequency range	2400 MHz - 2500 MHz
Gain	6.0 dBi
VSWR (voltage standing wave ratio)	< 1.8
Polarization	Linear, vertical
HPBW (half power bandwidth)	horizontal 360°
Downtilt	0°
Max. Power	25 W
Impedance	50 Ω
Connector	N female

Table 3: Electrical Specification

Temperature	- 40 °C to +80 °C, - 40 °F to 176 °F
Radome color	Grey-white
Radome material	Fiber glass
Weight	0.34 kg, 0.75 lb
Dimensions	ø 22 mm x 250 mm, ø 0.87 in x 9.84 in
Protection class	IP65

Table 4: Environmental & Mechanical Characteristics

1 m, 3.28 ft with N male connectors at both ends.
Pigtail, R-SMA male to N female
Mounting material

Table 5: Cable and Accessories

5.2 Omnidirectional antenna for 5 GHz band

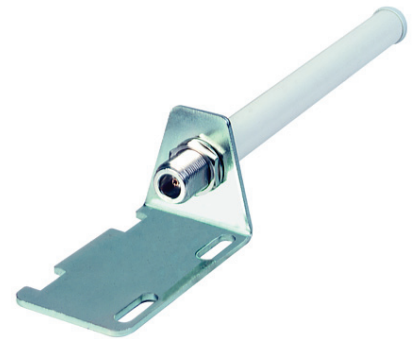
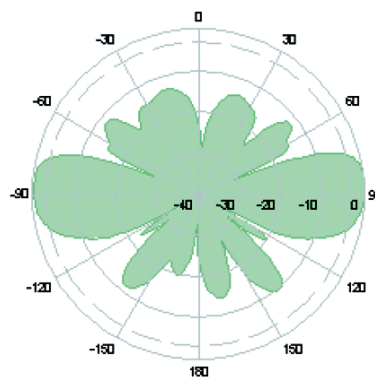
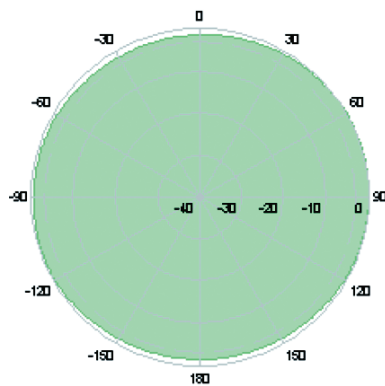
■ BAT-ANT-N-5A-IP65

Order Number: 943 981-003

Radiation Pattern

horizontal 5470 MHz

vertical 5470 MHz



To be placed in the middle of the illuminated area.
Indoor and outdoor use is possible.

Frequency range	5150 MHz - 5875 MHz
Gain	5 dBi
VSWR (voltage standing wave ratio)	1.5
Polarization	Linear, vertical
HPBW (half power bandwidth)	horizontal 360°
HPBW (half power bandwidth)	vertical 25°
Max. Power	6 W
Impedance	50 Ω
Connector	N female

Table 6: Electrical Specification

Temperature	- 45 °C to +70 °C, - 49 °F to +158 °F
Radome color	Grey-white
Radome material	Polypropylene
Weight	0.3 kg, 0.66 lb
Dimensions	16 mm x 160 mm, 0.63 in x 6.3 in
Protection class	IP65

Table 7: Environmental & Mechanical Characteristics

1 m, 3.28 ft with N male connectors at both ends.
Pigtail, R-SMA male to N female
Mounting material

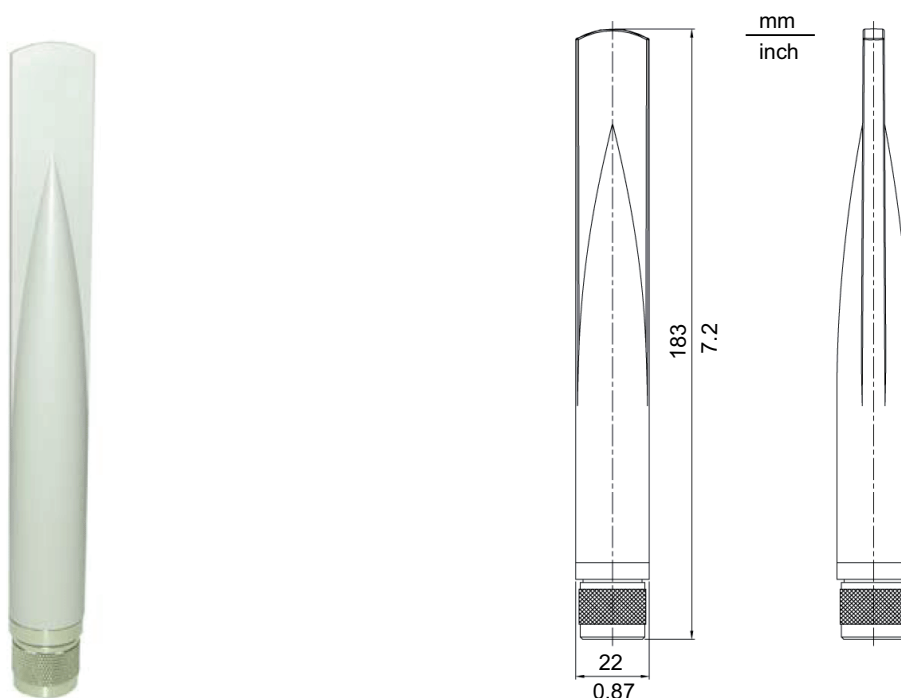
Table 8: Cable and Accessories

5.3 Omnidirectional Antenna for 2.4 and 5 GHz band

■ BAT-ANT-N-3AGN-F

Order Number: 942 047-001 (10 pcs.)

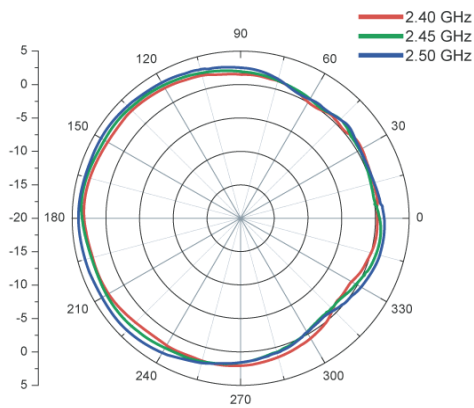
The antenna is supplied with all BAT-F and BAT-C devices.



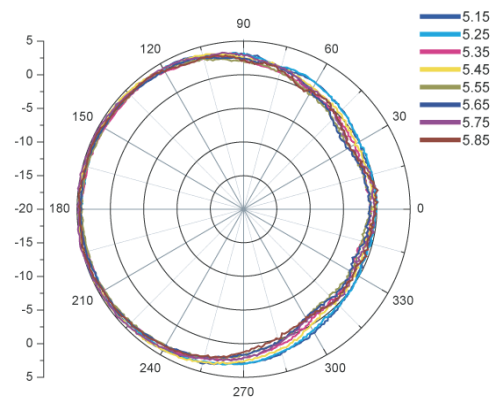
The antenna is directly screwed on the BAT.

Radiation Pattern

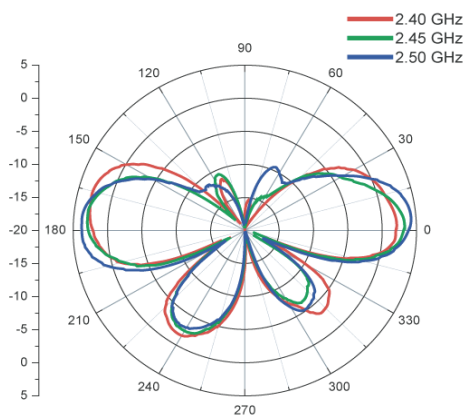
horizontal 2400 MHz



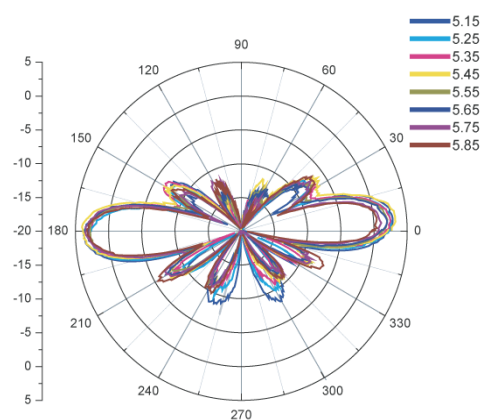
horizontal 5000 MHz



vertical 2400 MHz



vertical 5000 MHz



Frequency range	2400 MHz - 2500 MHz	5150 MHz - 5875 MHz
Gain	2.5 dBi	5.0 dBi
VSWR (voltage standing wave ratio)	2.0	
Polarization	Linear, vertical	
HPBW (half power bandwidth)	horizontal 360°	
HPBW (half power bandwidth)	vertical 30°	vertical 15°
Max. Power	2 W	
Impedance	50 Ω	
Connector	N-type male	

Table 9: Electrical Specification

Temperature	-40 °F ... +158 °F (-40 °C ... +70 °C)
Radome color	Grey-white
Radome material	ABS
Weight	70 g (0.15 lb)
Dimensions	22 mm x 183 mm (0.87 in x 7.20 in)
Protection class	IP65

Table 10: Environmental & Mechanical Characteristics

5.5 Dual band Hemispherical Antenna for 2.4 and 5 GHz band

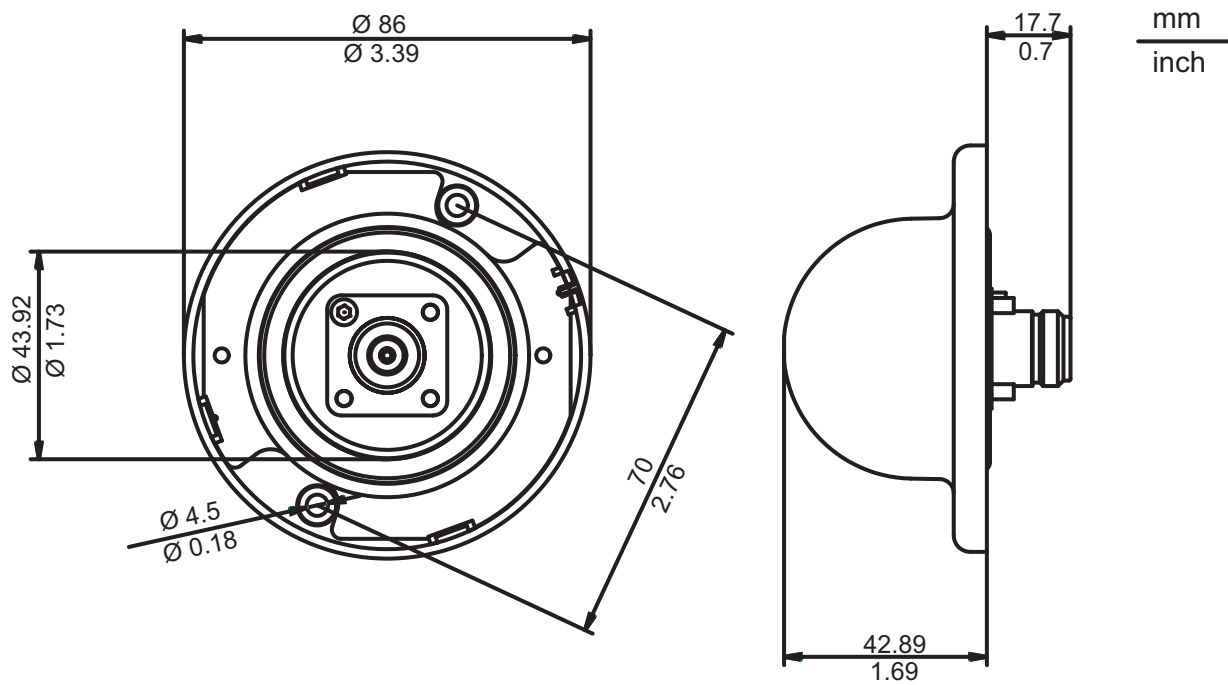
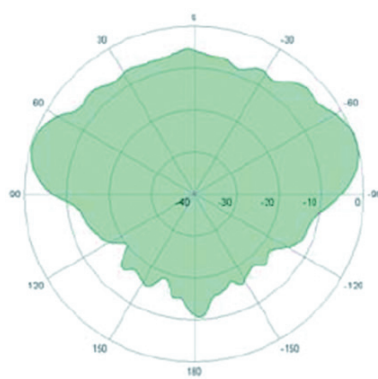
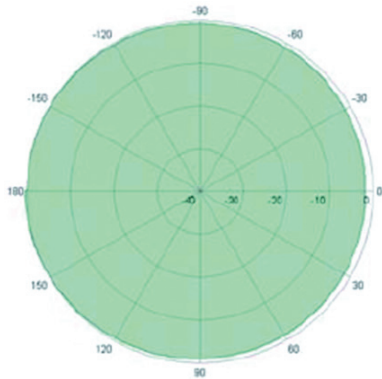
■ BAT-ANT-N-6ABG-IP65

Order Number: 943 981-004

Radiation Pattern

horizontal

vertical



To be placed on moving parts, vehicles or boxes.

Frequency range	2300 - 2500 and 4900 - 5935 MHz
Impedance	50 Ω
VSWR (voltage standing wave ratio)	1.8
Polarization	Linear, vertical
Gain	6dBi @2.4 GHz, 8dBi @5 GHz
3 dB beamwidth horizontal	@ 2.4 GHz 360°
3 dB beamwidth horizontal	@ 5 GHz 173°
Max. Power	75 W (CW) at 25 °C, 77 °F

Table 16: Electrical Specification

1 m, 3.28 ft with N male connectors at both ends.
Pigtail, R-SMA male to N female

Table 17: Cable and Accessories