

# CB-0941-02 (OWS451 AND OWL253) ELECTRICAL AND MECHANICAL DATASHEET

---

**Document Revision**

Release: 16 May, 2011 10:39

Document version: 77

*Copyright © 2010 connectBlue AB. The contents of this document can be changed by connectBlue AB without prior notice and do not constitute any binding undertakings from connectBlue AB. connectBlue AB is not responsible under any circumstances for direct, indirect, unexpected damage or consequent damage that is caused by this document. All rights reserved. All brand and product names are trademarks or service marks of their respective owners.*

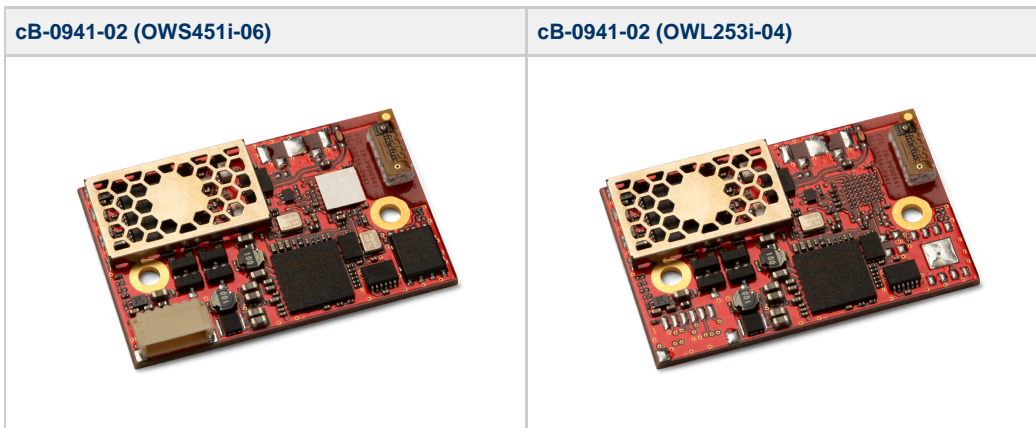
# 1 Table of Content

- 1 Table of Content
- 2 Introduction
  - 2.1 Key features
  - 2.2 Product variants
  - 2.3 Block diagram
- 3 Electrical interface and connectors
  - 3.1 Pin numbering
  - 3.2 Pin description
  - 3.3 Characteristics
  - 3.4 Hardware Reset
  - 3.5 Power Control
- 4 Antenna Information
  - 4.1 Surface mounted antenna (internal)
  - 4.2 External antennas
  - 4.3 Antenna accessories
  - 4.4 Antennas
- 5 Mounting information
  - 5.1 Module dimensions
  - 5.2 Using the J2/J3 board-to-board connectors
  - 5.3 Using press-fit nuts for mounting
  - 5.4 Recommended M2 screw
  - 5.5 Antenna issues
- 6 WLAN information
  - 6.1 Radio sensitivity OFDM
  - 6.2 Radio sensitivity DSSS
- 7 Regulatory information
  - 7.1 Declaration of conformity
  - 7.2 IC and FCC compliance
  - 7.3 UL listing information
  - 7.4 Compliance with RoHS directive
- 8 Guidelines for efficient and safe use
  - 8.1 General
  - 8.2 Product care
  - 8.3 Radio frequency exposure
  - 8.4 Electronic equipment
  - 8.5 Potentially explosive atmospheres
  - 8.6 Safety compliance
- 9 Design examples
  - 9.1 Basic design

## 2 Introduction

The IEEE 802.11abgn OEM Modules from connectBlue has been developed for integration in industrial devices. The modules are providing state of the art low power features, compatibility, robustness, and reliability. The modules minimizes the work needed to implement IEEE 802.11 in a device as it provides, together with the driver package, all software, hardware, type approval, EMC certification etc. It is developed for reliable, high demanding industrial devices and applications and delivers high performance. The connectBlue wireless LAN modules are available in different versions (see Product variants).

The wireless LAN modules are complete IEEE 802.11 implementations. The IEEE 802.11 modules has small form factors and the interface layout is the same as the Bluetooth and IEEE 802.15.4 modules from connectBlue, which enables customers to prepare their device for both wireless LAN, IEEE 802.15.4, and Bluetooth.



### 2.1 Key features

- Dual-band operation (IEEE 802.11-2007, abg, incl. single stream IEEE 802.11n)
- WEP, AES, and CRC-32 hardware accelerators
- WPA and WPA2 support - both personal and enterprise modes
- UART host interface
- SPI host interface
- Quality of Service: 802.11e and WMM
- Ad-hoc and infrastructure mode
- Bluetooth co-location with PTA (Packet Traffic Arbitration) support
- Radio type approved for Europe.
- Unlicensed Modular Transmitter Approval for US (FCC) and Canada (IC).
- Compliant with EMC standards.
- Industrial temperature range -40 to +85 °C.
- Support for low power modes.
- Compatible with connectBlue Bluetooth and IEEE 802.15.4 modules
- Internal or external antenna
- Receive diversity

## 2.2 Product variants

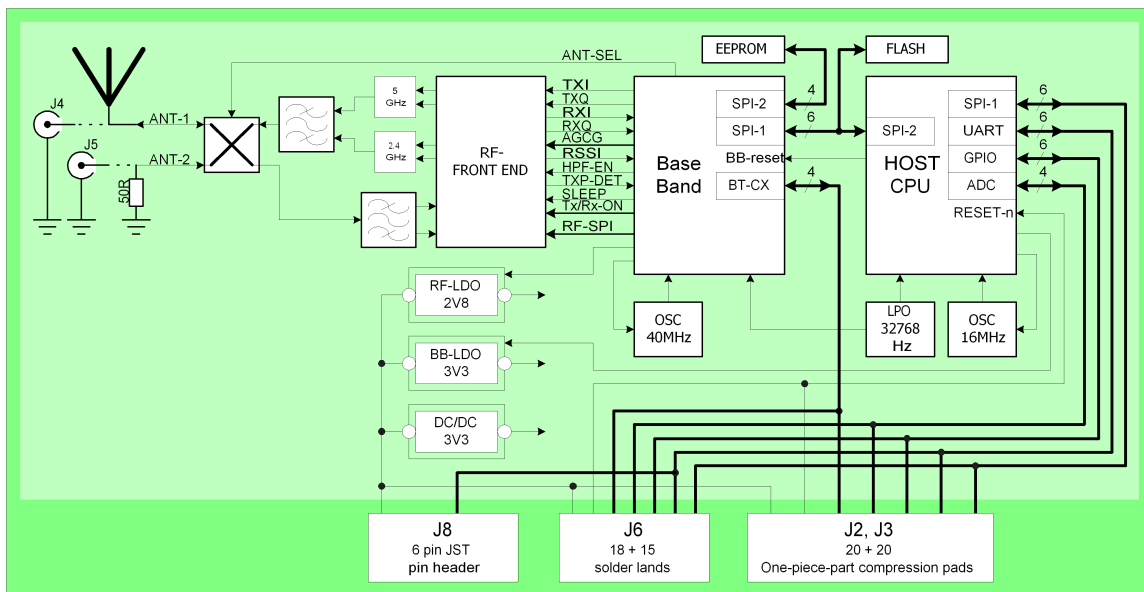
This electrical & mechanical data sheet is applicable to the following wireless LAN modules from connectBlue:

- cB-0941-02

The different mounting options of cB-0941-02 hardware (OWS451i/x -04/06 and OWL253i/x-04) are all based on the same PCB. The module is Type Approved and referred in this document with the model name cB-0941-02.

Model Family	Mounting option	FCC ID	IC	Description
cB-0941-02	OWL253i-04	PVH0941	5325A-0941	IEEE802.11abgn LAN module with internal antenna, board-to-board connector, solder-lands, high-speed SPI host interface
cB-0941-02	OWL253x-04	PVH0941	5325A-0941	IEEE802.11abgn LAN module with dual external antenna U.FL. connectors, board-to-board connector, solder-lands, high-speed SPI host interface
cB-0941-02	OWS451i-04	PVH0941	5325A-0941	IEEE802.11abgn Serial Port Adapter module with internal antenna, board-to-board connector, solder-lands, UART host interface
cB-0941-02	OWS451x-04	PVH0941	5325A-0941	IEEE802.11abgn Serial Port Adapter module with dual external antenna U.FL. connectors, board-to-board connector, solder-lands, UART host interface
cB-0941-02	OWS451i-06	PVH0941	5325A-0941	IEEE802.11abgn Serial Port Adapter module with internal antenna, board-to-board connector, solder-lands, JST connector, UART host interface
cB-0941-02	OWS451x-06	PVH0941	5325A-0941	IEEE802.11abgn Serial Port Adapter module with dual external antenna U.FL. connectors, board-to-board connector, solder-lands, JST connector, UART host interface

### 2.3 Block diagram



## 3 Electrical interface and connectors

This section describes the signals available on the module interface connectors. There are three ways of connecting:

- Via the PCB solder lands on the edge of the PCB, J6 (see figure below: Secondary side connectors). For more information see Section J6 Solder Lands Description.
- Via the 2 x 20-pin 1mm pitch board-to-board (one piece part) connectors J2 and J3. The J2 and J3 connectors exist on the module only as compression pads (see figure below: Secondary side connectors). These pads mates with the carrier board one-piece part connector. For more information see Section J2 Connector Description and J3 Connector Description.

Optional:

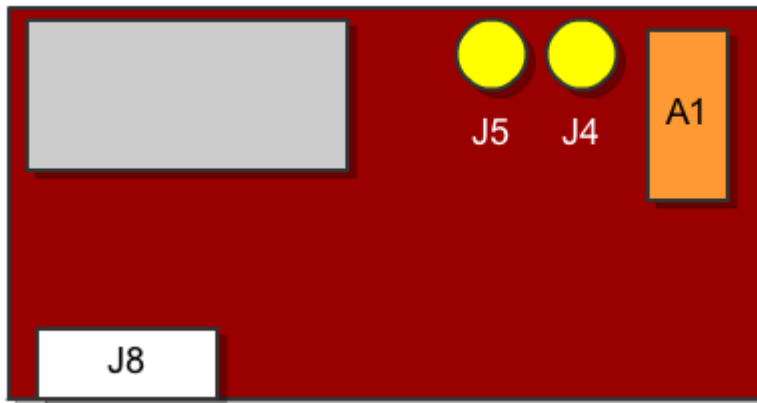
- Via the JST connector, J8 (see figure below: Primary side connectors). The connector is a 6 poles pin header. The pitch is 1mm and the connector is from JST with part number SM06B-SRSS-TB. For more information see section J8 Connector Description.

### 3.1 Pin numbering

#### 3.1.1 Primary side connectors

J8 is the JST connector located on the primary side of the module. A1 is the internal antenna.

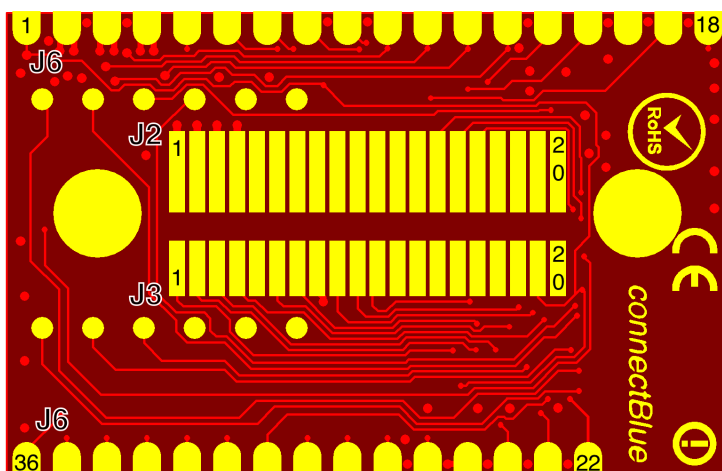
J4 and J5 are U.FL connectors for external antennas. J4 is the primary antenna connector and J5 the auxiliary antenna connector.



#### 3.1.2 Secondary side connectors

J2 and J3 is the connectBlue board-to-board connector. The pin layout of the connector is compatible with all OEM Serial Port Adapters from connectBlue.

The J6 is the solder land connector.



The solder lands of connector (J6) have a new layout compared to cB-OWSPA311g.

## 3.2 Pin description

### 3.2.1 J2, J3, J6, J8 connector description

J2 Pin Nr	J3 Pin Nr	J6 Pin Nr	J8 Pin Nr	Signal Name	Signal Level	Type	Description
1,2	8	3, 25***	1	VSS	Ground	Power	GND
3,4	-	4	2	VCC	3.3 V	Power	3.3 - 5.5 VDC power supply
11	-	7		RED/Mode	CMOS	Out/In	<p>This signal is multiplexed:</p> <p>RED: red LED logic signal valid 600ms after power-up (see the <a href="#">Operating status</a> section), active low.</p> <p>Mode: Mode signal is valid as input only during the first 600ms after startup, after that its function changes to red LED. The Mode pin is active low with internal weak pull-up</p>
12	-	6		Switch-0	CMOS	In	<p>Used for the "Connect on external signal" function, see the Serial Port Adapter AT command Specification for more information on the Function switch, active low. The Switch-0 pin has internal weak pull-up</p> <p>A secondary function is that the module will restore all factory settings if both the Switch-1 and Switch-0 signals are low during start up. See the Serial Port Adapter AT command Specification for more information on the Restoring Default Configuration functionality.</p> <p>See section <a href="#">Switch-0 Signal</a> for design examples.</p>
13	-	8		GREEN/Switch-1	CMOS	Out/In	<p>This signal is multiplexed:</p> <p>GREEN: green-LED logic signal valid 500ms after power-up (see the <a href="#">Operating status</a> section), active low.</p> <p>Switch-1: Switch-1 signal is valid as input only during the first 500ms after power-up, after that its function changes to green-LED. If this pin is pulled-down** the unit goes back to default serial settings. The Switch-1 signal is active low with internal weak pull-up</p> <p>The module will restore all factory settings if both the Switch-1 and Switch-0 signals are pulled-down during power-up. See the Serial Port Adapter AT command Specification for more information on the Restoring Default Configuration functionality.</p> <p>See section <a href="#">GREEN/Switch-1</a> for design examples</p>
14	-	9	5	BLUE	CMOS	Out	<p>Logic Blue LED Signal (see the <a href="#">Operating status, table 9</a> section). Active low.</p> <p>Note: Blue LED will flash when data is transferred.</p> <p>See section <a href="#">BLUE Signal</a> for design examples.</p>
15	-	10	5	UART-CTS*	CMOS	In	Logic level UART Clear To Send, active low.
16	-	11	3	UART-TxD*	CMOS	Out	Logic level UART Transmit Data, "0" = Low, "1" = High
17	-	12	6	UART-RTS*	CMOS	Out	Logic level UART Request To Send, active low.
18	-	13	4	UART-RxD*	CMOS	In	Logic level UART Receive Data, "0" = Low, "1" = High
19	-	5	-	UART-DTR*	CMOS	Out	Logic level UART Data Terminal Ready, active low.
20	-	18, 30***	-	UART-DSR*	CMOS	In	Logic level UART Data Set Ready, active low.
	6	28	-	SPI-CS0n	CMOS	In	Logic level SPI chip select, active low.
	7	27	-	SPI-MOSI	CMOS	In	Logic level SPI Master Output Slave Input
	9	36	-	SerialSelect-0	CMOS	Out	Control signal for external serial transceivers. See <a href="#">Appendix Serial Interface</a> section for more info.

	10	35	-	SerialSelect-1	CMOS	Out	Control signal for external serial transceivers. See <a href="#">Appendix Serial Interface</a> section for more info.
	11	26	-	SPI-CLK	CMOS	In	Logic level SPI Clk input
-	13	24	-	SPI-MISO	CMOS	Out	Logic level SPI Master Input Slave Output
-	14	23	-	SPI-Int	CMOS	In	Logic level SPI external interrupt.
-	19	1	-	Reset-n	CMOS	In	Hardware reset. Active low. internal 100k ohm pull-up
-	20	2	-	VCC-3V	3.0 V	Out	Regulated interface voltage for voltage level shifting, max 10mA.
5 - 10	1 - 5, 12, 15 - 18	14 - 17, 19 - 21, 29, 31 - 34	-				Reserved, do not connect.


\*\*\* Alternative signal pin recommended to use in new designs (both signal pins should be connected).

- Logic level signals are CMOS logic level ( $-0.3V < V_{IL} < 0.8V$ ,  $2.3V < V_{IH} < 3.3V$ ).

### 3.2.2 J4 Primary external antenna connector

J4 is the primary external antenna connector. It is used for both transmit and receive. The port impedance to match is 50 ohm.


J4 pin nr	Pin name	Signal level	Type	Description
1	Ant-1	RF	I/O	Primary external antenna port (50 ohm)

 This connector is only available on OWS451x and OWL253x.

### 3.2.3 J5 Auxiliary external antenna connector

J5 is the auxiliary external antenna connector. It is used only for receiving and if the unit is configured for receive diversity mode. The unit never transmits RF through this antenna connector. The port impedance to match is 50 ohm.

J5 pin nr	Pin name	Signal level	Type	Description
1	Ant-1	RF	I	Auxiliary external antenna port (50 ohm)

 This connector is only available on OWS451x and OWL253x.

1. UART signals are CMOS logic level ( $-0.3V < V_{IL} < 0.9V$ ,  $2.1V < V_{IH} < 3.3V$ )



### 3.3 Characteristics

The cB-0941-02 family is designed to be fully interchangeable with the connectBlue Bluetooth product range. If the host product has space for the board, it is possible to choose freely between Bluetooth modules, e.g. cB-OEMSPA311i/x or cB-OEMSPA331i/x, or WLAN modules, e.g. OWSPA311gi/x, without any change of the host product. If you design your power supply for OWS451i/x the modules will be fully interchangeable.

#### 3.3.1 Power supply



Read the safety notes in section Guidelines for Efficient and Safe Use before using the modules.

##### 3.3.1.1 Supply voltage

Symbol	Parameter	Min	Typ.	Max	Unit
VDD	Supply voltage	3.3		5.5	V

### 3.3.1.2 Current consumption

#### 3.3.1.2.1 cB-0941-02 (OWS451)

Symbol	Power Mode	State	Band	DTIM	Min	Typ.	Max	Unit			
IDD @3.3VDC	Global	Reset				16		mA			
		Start-up				130	150	mA			
		Peak					350	mA			
	Sleep	Idle, no connection				26		mA			
		Managed, connected	2.4GHz	1		26		mA			
		Managed, connected	5GHz	1		28		mA			
			Managed, connected	2.4GHz	5		26		mA		
			Managed, connected	5GHz	5		28		mA		
			Managed, data throughput 1Mbit/s	2.4GHz			180		mA		
			Managed, data throughput 1Mbit/s	5GHz			230		mA		
			Online	Idle, no connection					26		mA
				Managed, connected	2.4GHz	1		26		mA	
	Managed, connected	5GHz		1		28		mA			
			Managed, connected	2.4GHz	5		26		mA		
			Managed, connected	5GHz	5		28		mA		
			Managed, data throughput 1Mbit/s	2.4GHz			180		mA		
			Managed, data throughput 1Mbit/s	5GHz			230		mA		
			Stop	Idle, no connection					7		mA
Managed, connected				2.4GHz	1		26		mA		
Managed, connected	5GHz	1			28		mA				
Managed, connected	2.4GHz	5			26		mA				
Managed, connected	5GHz	5			28		mA				
Managed, data throughput 1Mbit/s	2.4GHz				180		mA				
		Managed, data throughput 1Mbit/s	5GHz			230		mA			



Power consumption in sleep, online, and stop mode are measured in managed mode using firmware release 2.8.1.

#### 3.3.1.2.2 OWS253

Symbol	Mode	Min	Typ.	Max	Unit
--------	------	-----	------	-----	------

### 3.3.2 Input/output signals

Symbol	Parameter	Min	Typ	Max	Unit
VIN Low	Logic LOW level input voltage on all logic	-0.3		0.85	V
VIN High	Logic HIGH level input voltage	2.1		3.3	V
VOUT Low	Logic LOW level output voltage			0.4	V
VOUT High	Logic HIGH level output voltage	2.5			V
I GPIO	Sink and source current			4.0	mA
C GPIO	Input capacitance		8		pF

### 3.4 Hardware Reset

A hardware-reset input is available on the J1 and J3 connectors. An external reset source must be open drain or collector. The RESET-n pin is pulled-up internally with 56 kohm.

### 3.5 Power Control

The wireless LAN modules can be operated in several different power modes.

- Standard IEEE802.11 power save
- UAPSD/WMM Power Save Support

## 4 Antenna Information

This chapter gives a quality overview of the different antenna options.

There are 2 different antenna options available:

- An internal surface mounted (SMD) dual band antenna.
- Two U.FL connectors for external antennas. Different types of external antennas are available.

### 4.0.0.1 Caution



This radio transmitter IC: 5325A-0941 cB-0941-02 has been approved by Industry Canada to operate with the antenna types listed below with the maximum permissible gain and required antenna impedance for each antenna type indicated. Antenna types not included in this list, having a gain greater than the maximum gain indicated for that type, are strictly prohibited for use with this device.

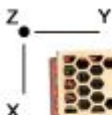
Cet émetteur radio IC: 5325A-0941 cB-0941-02 a été approuvé par Industry Canada pour fonctionner avec les types d'antenne énumérés ci-dessous avec le gain maximum autorisé et l'impédance nécessaire pour chaque type d'antenne indiqué. Les types d'antenne ne figurant pas dans cette liste et ayant un gain supérieur au gain maximum indiqué pour ce type-là sont strictement interdits d'utilisation avec cet appareil.

### 4.1 Surface mounted antenna (internal)

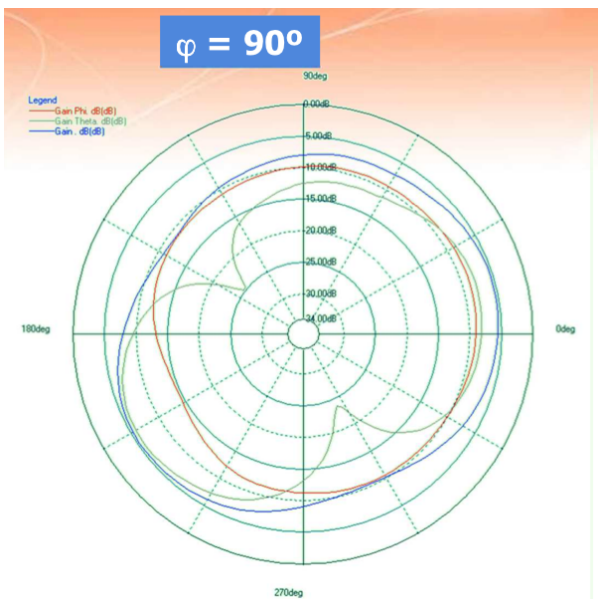
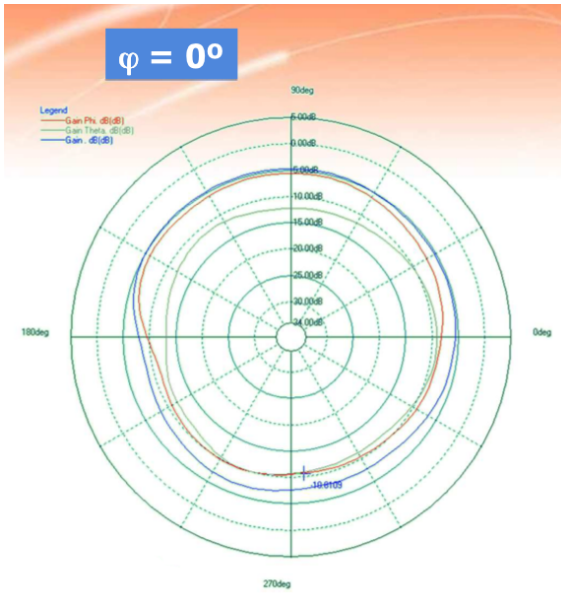


Part number	cB-0941-02 (OWL253i / OWS451i)
Antenna	FR05-S1-NO-1-004
Manufacturer	Fractus
Gain	0 dBi @ 2.4GHz, 3 dBi @ 5GHz
avg. VSWR	3.1 @ 2.4GHz, 2.3 @ 5GHz
avg. Efficiency	22% @ 2.4GHz, 39% @ 5GHz
Antenna size (LxWxH)	7 x 3 x 2 mm
Comments	The antenna gain is very dependent of the mounting of the module. The unit cannot be mounted in a metal-shielded enclosure with this antenna.

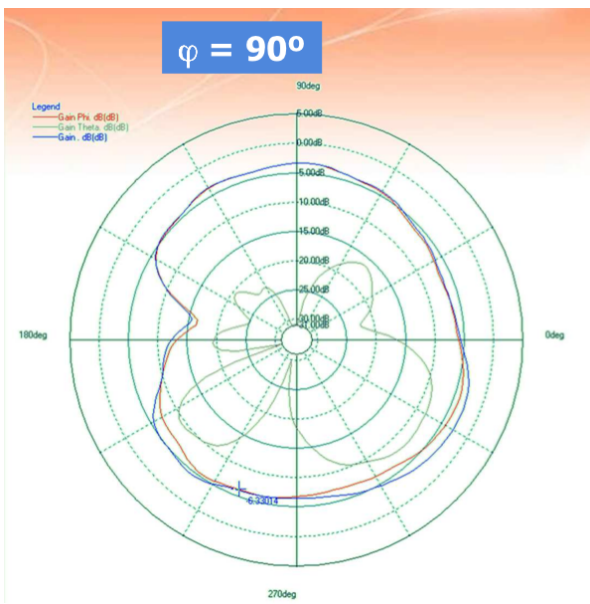
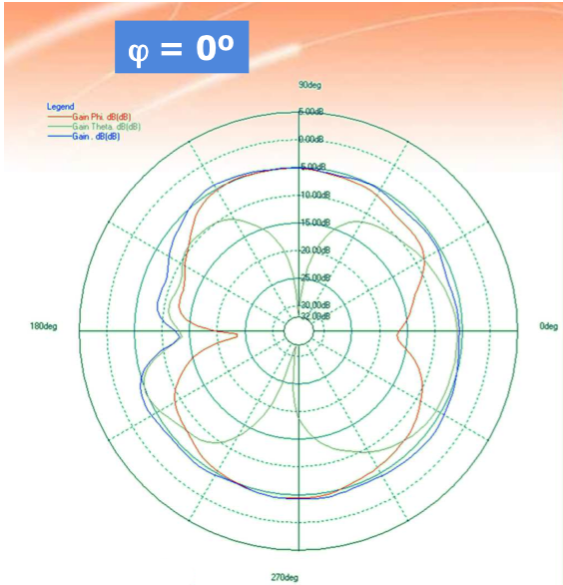
#### 4.1.1 Radiation patterns



4.1.1.1 Radiation Pattern Cuts @2450 MHz – Free Space



### 4.1.1.2 Radiation Pattern Cuts @5400 MHz – Free Space



## 4.2 External antennas

The external antennas are connected to the module with the on board U.FL connectors. Some antennas are connected directly to the U.FL connector and some are connected via a U.FL to SMA (cB-ACC-18 or cB-ACC-48) or U.FL to reversed polarity SMA (cB-ACC-38) adapter cable.


The sections below lists the antennas that are included in the radio type approvals of the module. For each antenna the "Approvals" field defines in what country/region the antenna is allowed to use. Definitions of the "Approvals" field are:


- **FCC** - The antenna is included in the FCC test reports, and thus approved for use in countries that accept the FCC radio approvals, primarily US.
- **IC** - The antenna is included in the IC (Industrie Canada) test reports, and thus approved for use in countries that accept the IC radio approvals, primarily Canada.
- **R&TTE** - The antenna is included in the R&TTE test reports, and thus approved for use in countries that accept the R&TTE radio approvals, primarily the European countries.

In general, antennas with Reverse Polarity SMA connector or U.FL connector are included in FCC, IC and R&TTE radio tests. Antennas with SMA connector are not allowed to be used in Canada and USA due to FCC/IC regulations but are in general included in R&TTE radio tests.

Antennas with a part number in the form "cB-ACC-XX" are available for orders via the connectBlue distribution network. For information about other antennas please contact connectBlue

### 4.3 Antenna accessories


Part Number	cB-ACC-18 / cB-ACC-48	
Name	U.FL to SMA adapter cable	
Connector	U.FL and SMA jack (outer thread and pin receptacle)	
Cable length	120 mm	
Cable loss	Less than 0.5 dB	
Comment	The SMA connector may be mounted in a panel.	
Approval	Approved for use in Europe but NOT approved for use in the US and Canada.	


Part Number	cB-ACC-38	
Name	U.FL to Reverse Polarity SMA adapter cable	
Connector	U.FL and Reverse Polarity SMA jack (outer thread and pin)	
Cable length	120 mm	
Cable loss	Less than 0.5 dB	
Comment	The Reverse Polarity SMA connector may be mounted in a panel.	
Approval	Approved for use in US, Canada and Europe.	




## 4.4 Antennas

### 4.4.1 Recommended antennas

Part Number	cB-ACC-53	
Name	Ex-IT WLAN RP-SMA (dual-band)	
Manufacture	ProAnt	
Polarization	Vertical	
Gain / Imp.	+3.0 dBi / 50ohm @ 2.4 GHz, +3.0 dBi / 50ohm @ 5 GHz	
Size	Ø 10 x 107 mm	
Connector	Reverse Polarity SMA plug (inner thread and pin receptacle)	
Comment	To be used together with the U.FL to Reverse Polarity SMA adapter cable (cB-ACC-38). An alternative SMA version antenna is available but not recommended (cB-ACC-54 / Ex-IT WLAN SMA).	
Approval	The antenna is approved for use in US, Canada and Europe. The alternative SMA version is approved for use in Europe but NOT approved for use in the US and Canada.	

Part Number	cB-ACC-55	
Name	InSide WLAN (dual band)	
Manufacture	ProAnt	
Polarization	Vertical	
Gain / Imp.	+3.0 dBi / 50ohm @ 2.4 GHz +3.0 dBi / 50ohm @ 5 GHz	
Size	27 x 12 mm (triangular)	
Cable length	100 mm	
Connector	U.FL	
Comment	To be connected to the U.FL connector on the PCB.	
Approval	The antenna is approved for use in US, Canada and Europe.	

<b>Part Number</b>	<b>cB-ACC-66</b>	
Name	FlatWhip 2400	
Manufacture	ProAnt	
Gain / Imp.	+3.0 dBi / 50ohm	
Size	Ø 50.0 x 30.0 mm	
Connector	SMA plug (inner thread and pin)	
Comment	To be used together with the U.FL to SMA adapter cable.	
Approval	The antenna is approved for Europe but NOT approved for use in the US and Canada. Please contact connectBlue for information about US and Canada approved versions of the antenna with Reverse Polarity SMA connector.	

#### 4.4.2 Alternative antennas

The alternative antennas are available for backward compatibility but not recommended for new designs.

Part Number	cB-ACC-21	
Name	R380.500.127	
Manufacture	Pulse	
Polarization	Vertical	
Gain / Imp.	+2.0 dBi / 50ohm	
Size	Ø 14.3 x 61.4 mm	
Connector	SMA plug (inner thread and pin)	
Comment	To be mounted on the U.FL to SMA adapter cable (cB-ACC-18 or cB-ACC-48). A Reverse Polarity SMA version is also available (R380.500.125).	
Approval	The SMA version is approved for use in Europe but NOT approved for use in the US and Canada. The alternative Reverse Polarity SMA version antenna is approved for use in the US, Canada and Europe.	

<b>Part Number</b>	—	
Name	R380.500.139	
Manufacture	Pulse	
Polarization	Vertical	
Gain / Imp.	+2.0 dBi / 50 ohm	
Size	Ø 14.3 x 61.1 mm	
Connector	Reverse Polarity SMA plug (inner thread and pin receptacle)	
Comment	The difference compared to the R380.500.125 antenna is that the R380.500.139 antenna has a seal ring. To be mounted on the U.FL to Reverse Polarity SMA adapter cable (cB-ACC-38). An SMA version antenna is also available (R380.500.124).	
Approval	The Reverse Polarity SMA version antenna is approved for use in the US, Canada and Europe. The alternative SMA version is approved for use in Europe but NOT approved for use in the US and Canada.	

#### 4.4.3 Customer specific antennas

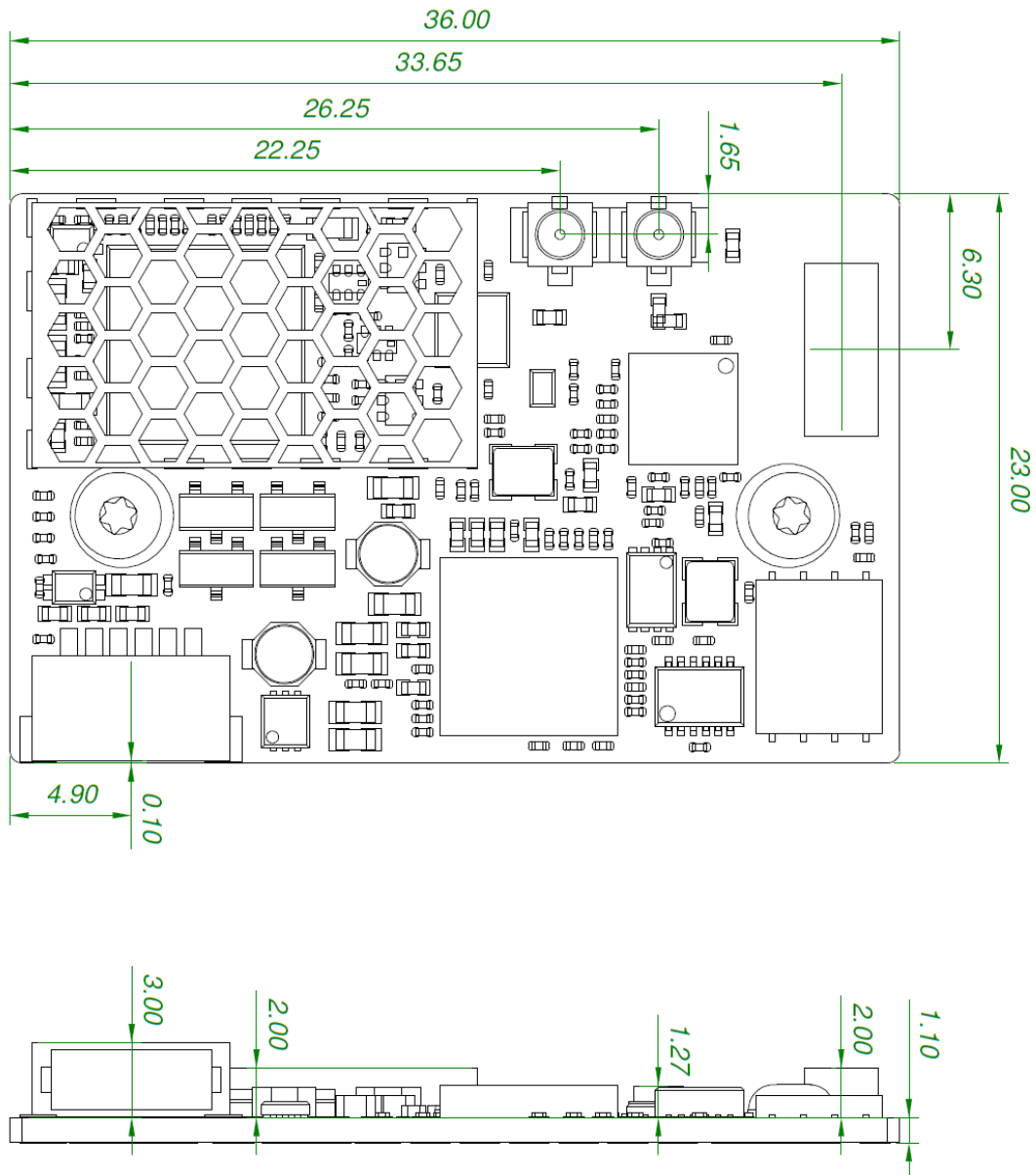
<b>Part Number</b>	—
Name	InSide EPA WLAN
Manufacture	ProAnt
Polarization	Circular
Gain / Imp.	+3.0 dBi / 50 ohm
Size	66 x 90 x 36 mm
Connector	U.FL-R-SMT
Comment	Frequency 5150 - 5350 MHz (5.0 - 6.0 GHz)
Approval	approved for use in the US, Canada and Europe.

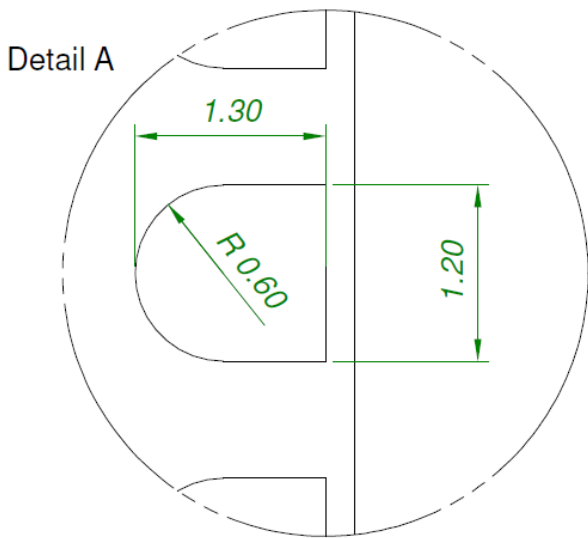
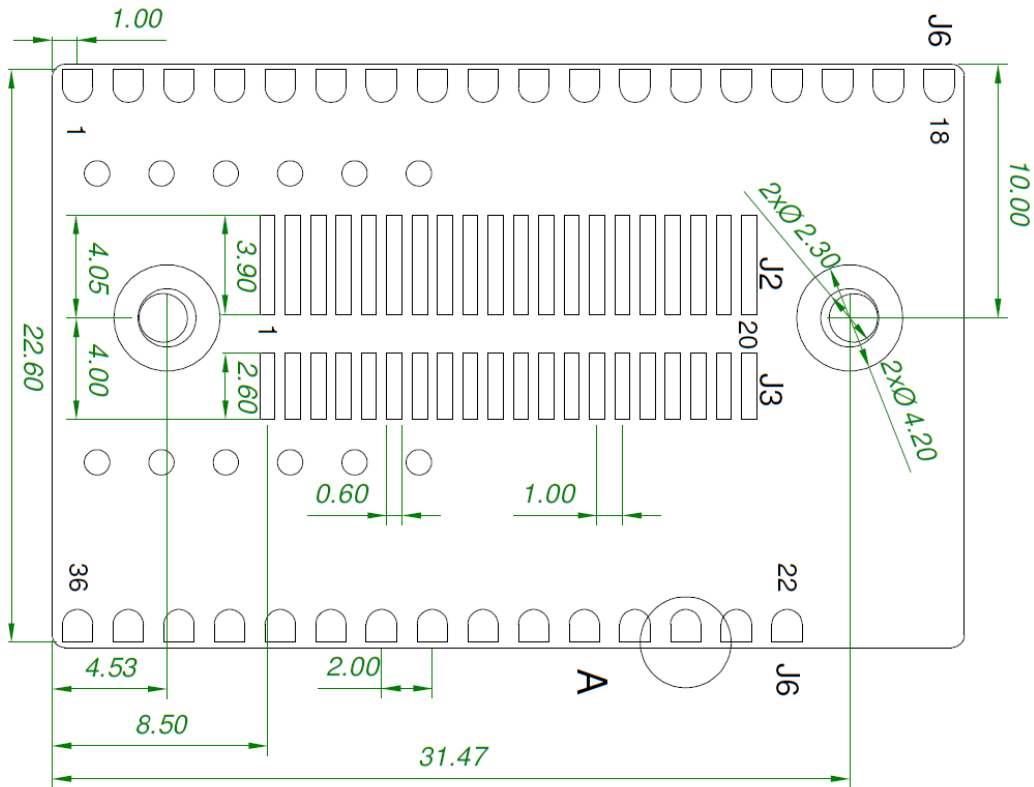
<b>Part Number</b>	—
Name	Inside EPA 2400
Manufacture	ProAnt
Polarization	Mixed horizontal and vertical
Gain / Imp.	+3.0 dBi / 50 ohm
Size	66 x 90 x 36 mm
Connector	U.FL-RSMT
Comment	Frequency 2400 - 2485 MHz
Approval	approved for use in the US, Canada and Europe.

<b>Part Number</b>	—
Name	SDM2-2400 / 1575
Manufacture	Mobile Mark
Polarization	Vertical
Gain / Imp.	+2.0 dBi / 50 ohm
Size	Ø 65.0 x 28.6 mm
Cable length	200 mm
Connector	U.FL
Comment	Frequency 2400 - 2500 MHz
Approval	approved for use in the US, Canada and Europe.

## 5 Mounting information

### 5.1 Module dimensions



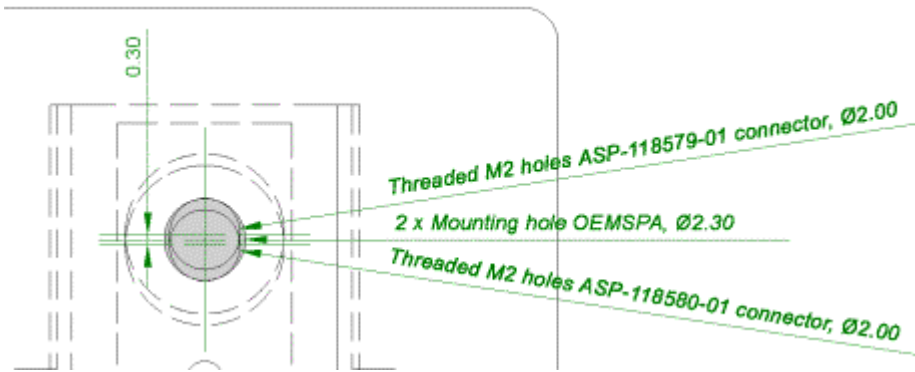


Tolerances:

1. Outline dimensions +/- 0.1mm
2. Drilled hole to outline: +/- 0.05mm

**5.1.1 Mounting holes**

There are 2 x 2.3mm mounting holes on cB-0942. The reasons for the 2.3mm holes are that the threaded M2 holes on the single and double row connectors (see section 4.2.1) are not aligned. The outer tangents of the 2.3mm holes align the module if the single row connectors are used and the inner if double row connectors are used (see Figure 11). Choose the outer tangent (CC distance 27.24mm) if the module is aligned and mounted with some other technique based on M2 screws (e.g. press-fit nuts), see Figure 12.



## 5.2 Using the J2/J3 board-to-board connectors

The board-to-board connector should be a 1 mm pitch one-piece part connector. The recommended manufacture is Samtec with many connector options available; see section 4.2.1.1. Chapter 2 contains more information about the connector and the electrical interface.

### 5.2.1 Suitable one-piece part connectors

#### 5.2.2 Double row ASP-118580-01 / ASP-118581-01 connectors

This connector is a double row connector and connects both J2 and J3. It connector has a height of 3.0 mm and this has to be considered if components are to be mounted on the motherboard under the board. The connector is also available with a height of 6.0 mm and 10.0 mm (The FSI-120 serie from Samtec).

There are alignment pins on the bottom side of the connector.

The connector is available with M2 threaded inserts (ASP-118580-01) that fit the mounting holes on the board. You may screw the board directly into these inserts. If you want to have a tighter and more secure mounting you may use longer screws and secure it using a nut on the backside of the motherboard.

Another way to mount the module is to use press-fit nuts on the motherboard and skip the M2 threads on the connector (ASP-118581-01), see section 4.3 for more information about press-fit nuts.

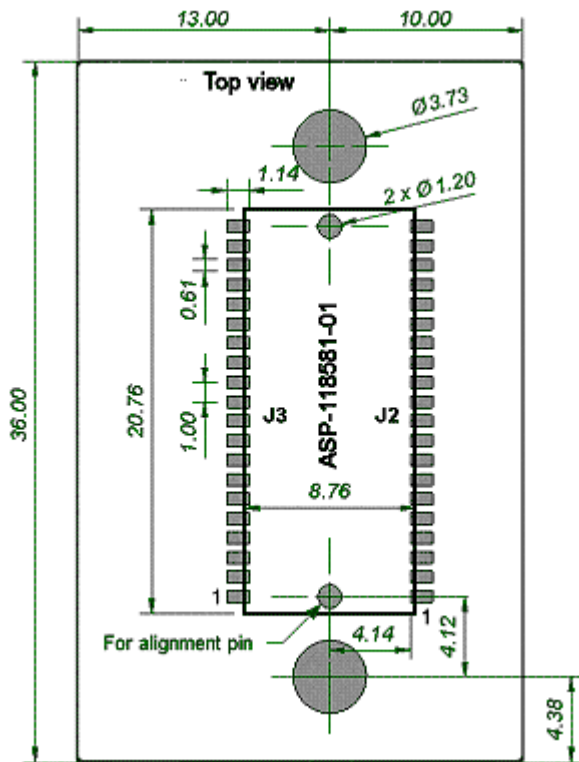
Samtec order number	Quote number	Equivalent part	Package	Remark
REF-120021-01	55392	FSI-120-03-G-D-AB	Tube	Align pin on bottom side only
REF-120021-02	55392	FSI-120-03-G-D-AB-K-TR	Tape-n-Reel	Align pin on bottom side only
REF-120018-01	55392	FSI-120-03-G-D-M-AB	Tube	With M2 threaded inserts and align pin on bottom side only
REF-120018-02	55392	FSI-120-03-G-D-M-AB-K-TR	Tape-n-Reel	With M2 threaded inserts and align pin on bottom side only



When ordering connectors from Samtec or an official Samtec distributor, please use the REF order number and refer to the connectBlue global quote number for best price. For technical questions regarding the Samtec connectors please contact connectBlue or Samtec at [Scandinavia@samtec.com](mailto:Scandinavia@samtec.com).

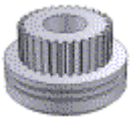
See figure below for more information about the connector and necessary measurements on the motherboard. The large mounting holes on the motherboard are designed for press-fit nuts and could be smaller if press-fit nuts are not used.





### 5.3 Using press-fit nuts for mounting

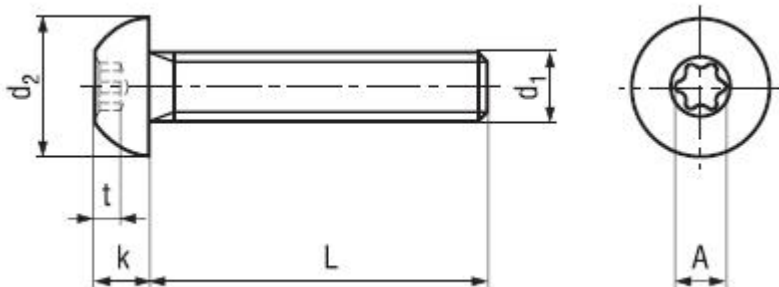
A press-fit nut is pressed into the PCB from the bottom side with a special press tool. M2 sized press-fit nuts are suitable for the modules (see figure below) and are manufactured by PEM Fastening Systems, [www.pemnet.com](http://www.pemnet.com), part no KFS2-M2. Be careful with the distance between the nuts regarding alignment.



Spacer-pipes are recommended to use between the PCBs when press-fit nuts are used.

## 5.4 Recommended M2 screw

If a double-row connector with threaded inserts or press-fit nuts are used, then recommended for mounting of modules is a ISO 7380 M2 compatible screw. A suitable screw is the BN6404 from Bossard, [www.bossard.com](http://www.bossard.com), with TORX T6 head cap. See figure below.



Parameter	Value	Unit
d2	3.5	mm
k max	1.3	mm
t max	0.8	mm
A	2.0	mm



If other type of screw is used please ensure that  $d_2$  is less than 3.8 mm otherwise components near the mounting holes can be damaged.

## 5.5 Antenna issues

The unit cannot be mounted arbitrary, because of the radio communication. The unit with an internal surface mounted antenna cannot be mounted in a metal enclosure. No metal casing or plastics using metal flakes should be used, avoid also metallic based paint or lacquer. Keep a minimum clearance of 10 mm between the antenna and the casing. Keep 10 mm free space from metal around the antenna. If a metal enclosure is required, one of the external antenna options has to be used. See section 3.2 for more information on the antenna options available.

## 6 WLAN information

In the tables below you can find information about WLAN properties.

Parameter	Data
Radio	Redpine Signals RS9110 + Airoha 8230
RF output power	802.11b (CCK): +20dBm (typ.)
	802.11g (OFDM): +17dBm (typ.)
	802.11a (OFDM): +10dBm (typ.)
Receiver sensitivity	See table below
Receive input level (max)	-10 dBm
Output frequency	2.412 - 2.462 GHz, channel 1 - 11
	5 MHz channel separation
	5.180 - 5.240 GHz, U-NII-1, channel 36, 40, 44, 48
	20 MHz channel separation
Bluetooth co-existence	CSR traditional 3-wire

### 6.1 Radio sensitivity OFDM

Data rate	802.11gn (channel 6, 2437MHz, dBm)	802.11an (channel 36, 5180MHz, dBm)
MCS7	-69	-68
MCS6	-70	-70
MCS5	-72	-72
MCS4	-76	-76
MCS3	-79	-79
MCS2	-82	-82
MCS1	-84	-83
MCS0	-87	-86
54	-73	-72
48	-75	-73
36	-78	-78
24	-83	-80
18	-85	-83
12	-87	-85
9	-88	-86
6	-89	-87

## 6.2 Radio sensitivity DSSS

Data rate	802.11b (channel 6, 2437MHz, dBm)
11	-86
5.5	-89
2	-91
1	-94

## 7 Regulatory information

### Limitations

With current type approvals the module is allowed to operate only on the 2.4 GHz ISM band and on the 5 GHz U-NII band 1.

### 7.1 Declaration of conformity



We, connectBlue AB, of  
Norra Vallgatan 64 3V  
SE-211 22 Malmö, Sweden

declare under our sole responsibility that our product:

- cB-0941-02 (OWL253i)
- cB-0941-02 (OWL253x)
- cB-0941-02 (OWS451i)
- cB-0941-02 (OWS451x)

to which this declaration relates, conforms to the following product specifications:

#### **R&TTE Directive 1999/5/EC**

EN 300 328 V1.7.1 (2006-10)

EN 301 893 V1.5.1 (2008-12)

EN 301 489-1 V1.8.1 (2008-04)

EN 301 489-17 V2.1.1 (2009-05)

EN 61000-6-2 (2005)

#### **Safety Compliance**

IEC 60950-1: 2005 (2nd Edition) and/or EN 60950-1: 2006

#### **Medical Electrical Equipment**

IEC 60601-1-2 : 2007

2011-03-11 Malmö, Sweden



Mats Andersson

Mats Andersson  
CTO of connectBlue AB

If cB-0941-02 is used within EU a notification may be necessary to be made to each of the national authorities responsible for radio spectrum management of the intention to place radio equipment that uses frequency bands whose use is not harmonized throughout the EU, on its national market.

More information at: <http://europa.eu.int/comm/enterprise/rtte/gener.htm>

## 7.2 IC and FCC compliance

See [Product variants](#) for information about the different product variants.

### 7.2.1 IC Compliance

This device complies with Industry Canada licence-exempt RSS standard(s). Operation is subject to the following two conditions:

1. this device may not cause interference, and
2. this device must accept any interference, including interference that may cause undesired operation of the device.

Under Industry Canada regulations, this radio transmitter may only operate using an antenna of a type and maximum (or lesser) gain approved for the transmitter by Industry Canada. To reduce potential radio interference to other users, the antenna type and its gain should be so chosen that the equivalent isotropically radiated power (e.i.r.p.) is not more than that necessary for successful communication.

Within the band 5150 - 5250 MHz the operation of this device is restricted to indoor use to reduce the potential for harmful interference to co-channel mobile satellite systems.

This equipment complies with IC RSS-102 radiation exposure limits set forth for an uncontrolled environment. This equipment should be installed and operated with minimum distance 20 cm between the radiator & your body.

### 7.2.2 Conformité aux normes d'IC

Cet appareil est conforme à la(aux) norme(s) RSS sans licence d'Industry Canada. Son utilisation est soumise aux deux conditions suivantes :

1. Cet appareil ne doit pas causer d'interférences et
2. il doit accepter toutes interférences reçues, y compris celles susceptibles d'avoir des effets indésirables sur son fonctionnement.

Conformément aux réglementations d'Industry Canada, cet émetteur radio ne peut fonctionner qu'à l'aide d'une antenne dont le type et le gain maximal (ou minimal) ont été approuvés pour cet émetteur par Industry Canada. Pour réduire le risque d'interférences avec d'autres utilisateurs, il faut choisir le type d'antenne et son gain de telle sorte que la puissance isotrope rayonnée équivalente (p.i.r.e) ne soit pas supérieure à celle requise pour obtenir une communication satisfaisante.

Dans la bande de fréquences 5150 - 5250 MHz, le fonctionnement de cet appareil est limité à une utilisation à l'intérieur pour réduire le potentiel d'interférences brouillant les systèmes satellites mobiles d'un même canal.

Cet équipement respecte les limites d'exposition aux rayonnements IC RSS-102 définies pour un environnement non contrôlé. Il doit être installé et utilisé en maintenant une distance minimum de 20 cm entre le radiateur et votre corps.

### 7.2.3 FCC statement

This device complies with Part 15 of the FCC Rules. Operation is subject to the following two conditions:

1. this device may not cause harmful interference, and
2. this device must accept any interference received, including interference that may cause undesired operation.



This equipment has been tested and found to comply with the limits for a Class B digital device, pursuant to Part 15 of the FCC Rules. These limits are designed to provide reasonable protection against harmful interference in a residential installation. This equipment generates, uses and can radiate radio frequency energy and, if not installed and used in accordance with the instructions, may cause harmful interference to radio communications. However, there is no guarantee that interference will not occur in a particular installation. If this equipment does cause harmful interference to radio or television reception, which can be determined by turning the equipment off and on, the user is encouraged to try to correct the interference by one or more of the following measures:

- Reorient or relocate the receiving antenna
- Increase the separation between the equipment and receiver
- Connect the equipment into an outlet on a circuit different from that to which the receiver is connected

Consult the dealer or an experienced radio/TV technician for help.

### 7.2.3.1 End product labelling requirements

For an end product using the product cB-0941-02 there MUST be a label containing, at least, the following information:

This device contains FCC ID: PVH0941 IC: 5325A-0941
-----------------------------------------------------------

The label must be affixed on an exterior surface of the end product such that it will be visible upon inspection in compliance with the modular approval guidelines developed by the FCC.

#### 7.2.3.1.1 FCC End product labelling

In accordance with 47 CFR § 15.19 the end product shall bear the following statement in a conspicuous location on the device:

"This device complies with Part 15 of the FCC Rules. Operation is subject to the following two conditions:

1. this device may not cause harmful interference, and
2. this device must accept any interference received, including interference that may cause undesired operation."

When the device is so small or for such use that it is not practicable to place the statement above on it, the information shall be placed in a prominent location in the instruction manual or pamphlet supplied to the user or, alternatively, shall be placed on the container in which the device is marketed. However, the FCC ID label must be displayed on the device.

In case, where the final product will be installed in locations where the end-consumer is not able to see the FCC ID and/or this statement, the FCC ID and the statement shall also be included in the end-product manual.

#### 7.2.3.1.2 IC End product labelling

User manuals for licence-exempt LPDs shall contain the following or equivalent statements in a conspicuous position:

Operation is subject to the following two conditions:

1. this device may not cause interference, and
2. this device must accept any interference, including interference that may cause undesired operation of the device.

#### 7.2.3.1.3 Étiquetage du produit final conforme à IC

Les manuels d'utilisation d'appareils de faible puissance, sans licence, feront figurer à un endroit bien visible les mentions suivantes ou équivalentes :

Son utilisation est soumise aux deux conditions suivantes :

1. Cet appareil ne doit pas causer d'interférences et
2. il doit accepter toutes interférences reçues, y compris celles susceptibles d'avoir des effets indésirables sur son fonctionnement.

### 7.2.3.2 Antenna

Our module cB-0941-02 are for OEM integrations only. In the end-user product the module shall be professionally installed in such a manner that only the authorized antennas can be used.

### 7.2.3.3 Caution



Any changes or modifications NOT explicitly APPROVED by connectBlue AB could cause the module to cease to comply with FCC rules part 15, and thus void the user's authority to operate the equipment.



Within the 5150 to 5250 MHz band (5 GHz radio channels 34 to 48) the module type cB-0941-02 is restricted to indoor operations to reduce any potential for harmful interference to co-channel MSS operation.



§15.407 statement; in case of absence of information to transmit or operational failure the module types cB-0941-02 will automatically discontinue transmission.

### 7.2.3.4 Ad-hoc frequencies

Module cB-0941-02 when operating under the definition of a client in 47 CFR §15.202 is preconfigured to use the most restrictive regulatory domain. For this reason the available operating frequency range is limited to channel 1 - 11 (2412 - 2462 MHz) for IEEE802.11b/g. For IEEE802.11a the available operating frequency range is limited to channels 36 - 48 (5180 - 5240 MHz).

### 7.2.3.5 RF-exposure statement

This equipment complies with FCC radiation exposure limits set forth for an uncontrolled environment. This equipment should be installed and operated with minimum distance 20 cm between the radiator & your body.

This equipment complies with IC RSS-102 radiation exposure limits set forth for an uncontrolled environment. This equipment should be installed and operated with minimum distance 20 cm between the radiator & your body.

Cet équipement est conforme aux limites d'exposition de rayonnement d'IC RSS-102 déterminées pour un environnement non contrôlé. Cet équipement devrait être installé et actionné avec la distance minimum 20 cm entre le radiateur et votre corps.

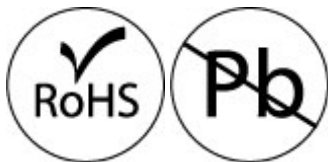
Any notification to the end user of installation or removal instructions about the integrated radio module is NOT allowed.

## 7.3 UL listing information

If a customer intends to UL list a product including the cB-0941 this information is useful. The printed circuit board is produced according to the following specification:

- UL recognized ZPMV2 min. 130 °C flame class V-0 or better.

## 7.4 Compliance with RoHS directive



The cB-0941-02 are produced according to the RoHS (Restriction of the use of certain Hazardous Substances in electrical and electronic equipment) directive and complies with the directive.



## 8 Guidelines for efficient and safe use

### 8.1 General

Read this information before using your cB-0941-02 module.

For any exceptions, due to national requirements or limitations, when using your WLAN module cB-0941-02, please contact connectBlue AB.



Changes or modifications to the product not expressly approved by connectBlue AB will void the user's authority to operate the equipment.

### 8.2 Product care

- Do not expose your product to liquid or moisture.
- Do not expose your product to extreme hot or cold temperature.
- Do not expose your product to lit candles, cigarettes, cigars, open flames, etc.
- Do not drop, throw or try to bend your product since rough treatment could damage your product.
- Do not attempt to disassemble your product. Doing so will void warranty. The product does not contain consumer serviceable or replaceable components. Service should only be performed by connectBlue AB.
- Do not paint your product as the paint could prevent normal use.
- If you will not be using your product for a while, store it in a place that is dry, free from damp, dust and extreme heat and cold.
- The clearance and creepage distances required by the end product must be withheld when the module is installed.
- The cooling of the end product shall not negatively be influenced by the installation of the module when the module is installed.

### 8.3 Radio frequency exposure

The cB-0941-02 WLAN module contains a small radio transmitter and receiver.

During communication with other WLAN products the cB-0941-02 module transmits and receives radio frequency (RF) electromagnetic fields (microwaves) in the frequency range 2412 - 2462 MHz and 5180 - 5240 MHz. The output power of the radio transmitter is very low. When using the cB-0941-02, you will be exposed to some of the transmitted RF energy. This exposure is well below the prescribed limits in all national and international RF safety standards and regulations.

### 8.4 Electronic equipment

Most modern electronic equipment, for example, in hospitals and cars, is shielded from RF energy. However, certain electronic equipment is not. Therefore:



This equipment emits RF energy in the ISM (Industrial, Scientific, Medical) band. Please insure that all medical devices used in proximity to this device meet appropriate susceptibility specifications for this type of RF energy.

### 8.5 Potentially explosive atmospheres

Turn off your electronic device before entering an area with potentially explosive atmosphere. It is rare, but your electronic device could generate sparks. Sparks in such areas could cause an explosion or fire resulting in bodily injury or even death.

Areas with a potentially explosive atmosphere are often, but not always, clearly marked. They include fuelling areas, such as petrol station, below deck on boats, fuel or chemical transfer or storage facilities, and areas where the air contains chemicals or particles, such as grain, dust, or metal powders.

### 8.6 Safety compliance

In order to fulfill the safety standard EN 60950-1:2006 the WLAN module cB-0941-02 must be supplied by a Class-2 Limited Power Source.

#### 8.6.1 Power supply

- Connect your power supply only to designated power-sources as marked on the product.
- To reduce risk of electric shock, unplug the unit from any power source before attempting to clean it.

## **9 Design examples**

### **9.1 Basic design**