

**UNIQUE**

Unique Electronic INT'L Limited  
香港优力科电子有限公司

Tel +86 755 8836 3580

Fax +86 755 8253 1204

[sammi@ylk-ic.com](mailto:sammi@ylk-ic.com)

<http://www.ylk-ic.com>

Unit 1001, Fourseas Building 208-212,  
Nathan Road, Kowloon,  
Hong Kong

2011.01

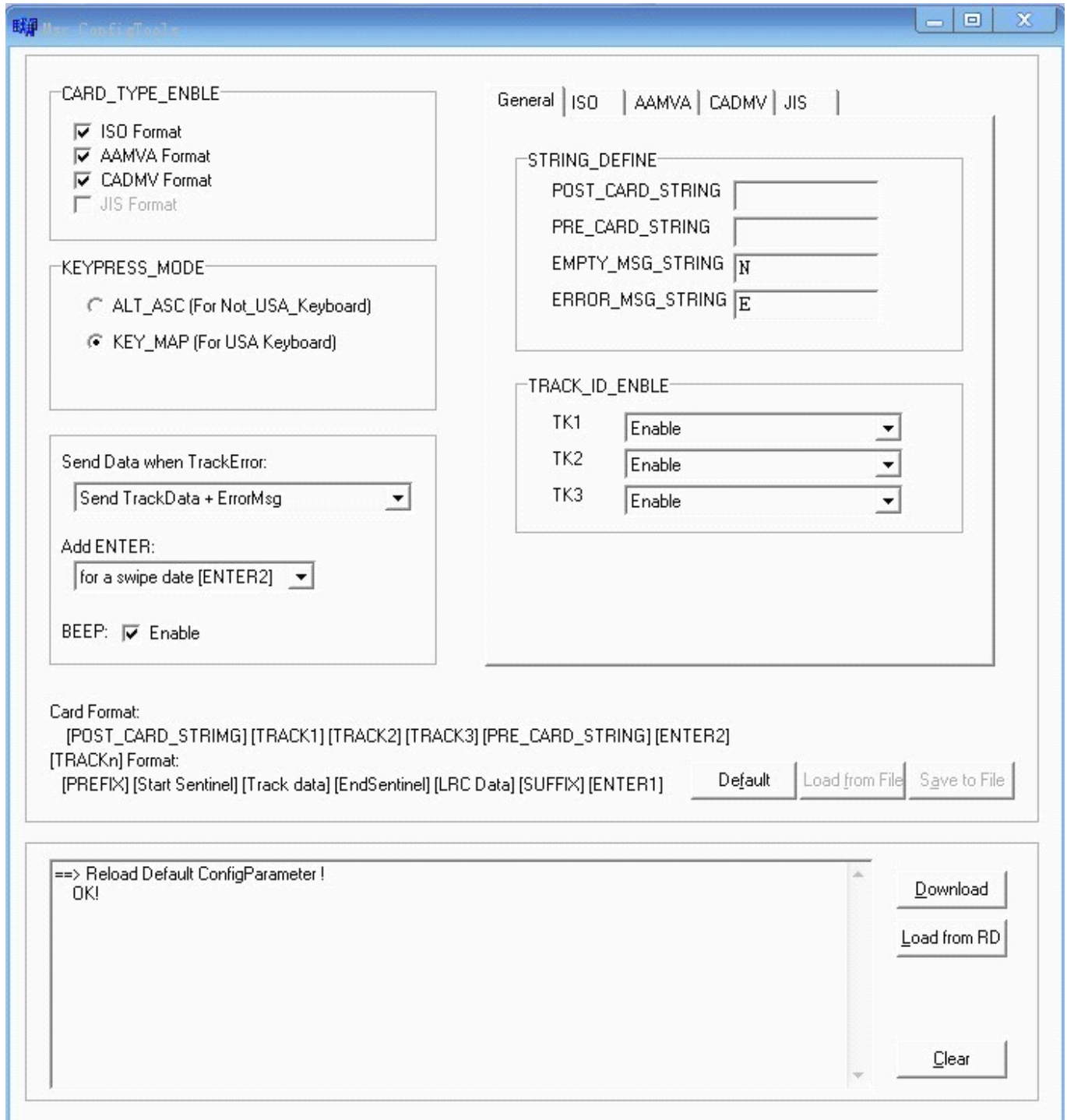
## **Fetures**

- With indication of light
- Low power consumption, good compatibility
- ISO 7811/12/13/14
- Easy Programmable
- RS232/PS2/USB
- Cards can be swiped and read in both directions.
- Readers can be affixed to most computer keyboards or to any flat surface,
- Can be connected to any PC or Mac via keyboard wedge or USB interface.

## **Specification**

- Technic Details: Recording Density: 201 BPI, 75 BPI or 210 BPI
- Recording Capacity: 79 Characters, 40 Characters or 107 Characters
- Power Supply: +5V DC  $\pm 5\%$
- Power Consumption: 65mA(max.)
- Head Function: Read only 1.5mm
- Card Thickness: Plastic  $0.76 \pm 0.08\text{mm}$
- Operation Speed: 10- 150cm/sec
- Error Rate: Less than 0.5%
- Interface: PS/2, RS232 or USB is available
- Dimension: 90 x 26 x 28mm
- Operation Locus: Indoors only
- Cable Length: 150cm
- Lifetime of Header: 800,000 card passes (1 pass : one swipe)
- Weight: Appro. 100g

# Driver



**FCC ID: N9W-MSR100**

This device complies with Part 15 of the FCC Rules. Operation is subject to the following two conditions: (1) this device may not cause harmful interference, and (2) this device must accept any interference received, including interference that may cause undesired operation.

Changes or modifications not expressly approved by the party responsible for compliance could void the user's authority to operate the equipment.

NOTE: This equipment has been tested and found to comply with the limits for a Class B digital device, pursuant to Part 15 of the FCC Rules. These limits are designed to provide reasonable protection against harmful interference in a residential installation. This equipment generates, uses and can radiate radio frequency energy and, if not installed and used in accordance with the instructions, may cause harmful interference to radio communications. However, there is no guarantee that interference will not occur in a particular installation. If this equipment does cause harmful interference to radio or television reception, which can be determined by turning the equipment off and on, the user is encouraged to try to correct the interference by one or more of the following measures:

- Reorient or relocate the receiving antenna.
- Increase the separation between the equipment and receiver.
- Connect the equipment into an outlet on a circuit different from that to which the receiver is connected.
- Consult the dealer or an experienced radio/TV technician for

help.