

Smart 4 fun User manual



Some services and apps may not be available in all countries. Please ask in-store for details.

Android is a trademark of Google Inc. The Android robot is reproduced or modified from work created and shared by Google and used according to terms described in the Creative Commons 3.0 Attribution Licence.

© Vodafone Group 2014. Vodafone and the Vodafone logos are trade marks of Vodafone Group. Any product or company names mentioned herein may be the trade marks of their respective owners.



Notice

Copyright © 2010 TCT Mobile Limited

All Rights Reserved

Your phone is made exclusively for Vodafone by TCT.

No part of this manual may be reproduced or transmitted in any form or by any means without prior written consent of TCT.

Trademarks

VODAFONE, the Vodafone logos are trade marks of the Vodafone Group. Other product and company names mentioned herein may be trade marks of their respective owners.

TCT is a trademark of TCT.

The Bluetooth® word mark and logos are owned by Bluetooth® SIG, Inc. Bluetooth® QDID (Qualified Design ID): B021282

microSD™ is a trade mark of SD Card Association.

PC suite copyright © 2010 Chengdu Singularity Software Co.,Ltd.

Licences



microSD Logo is a trademark.



The Bluetooth word mark and logos are owned by the Bluetooth SIG, Inc. and any use of such marks by TCT Mobile Limited and its affiliates is under license. Other trademarks and trade names are those of their respective owners.

VF685 Bluetooth Declaration ID B021282



The Wi-Fi Logo is a certification mark of the Wi-Fi Alliance.

Google, the Google logo, Android, the Android logo, Google Search™, Google Maps™, Gmail™, YouTube, Google Play Store, Google Latitude™ and Hangouts™ are trademarks of Google Inc.

The Android robot is reproduced or modified from work created and shared by Google and used according to terms described in the Creative Commons 3.0 Attribution License (the text will show when you touch and hold **Google legal in Settings > About phone > Legal information**)⁽¹⁾.

⁽¹⁾ This may not be available depending on your country.

You have purchased a product which uses the open source (<http://opensource.org/>) programs mtd, msdosfs, netfilter/iptables and initrd in object code and other open source programs licensed under the GNU General Public License and Apache License.

We will provide you with a complete copy of the corresponding source codes upon request within a period of three years from the distribution of the product.

You may download the source codes from vodafone.com/devices/smart4fun. The provision of the source code is free of charge from the internet.

Notice

The information in this manual is subject to change without notice. Every effort has been made in the preparation of this manual to ensure accuracy of the contents, but all statements, information, and recommendations in this manual do not constitute a warranty of any kind, expressed or implied. Read the safety precautions and safety information carefully to ensure that you use this wireless device in a correct and safe manner.

TCT Mobile Limited Address:

Room 1910-12A, Tower 3, China HK City, 33 Canton Road, Tsimshatsui, Kowloon, Hong Kong

1 Table of Contents

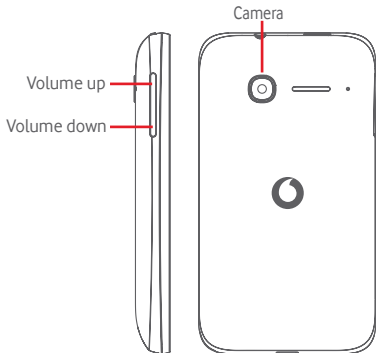
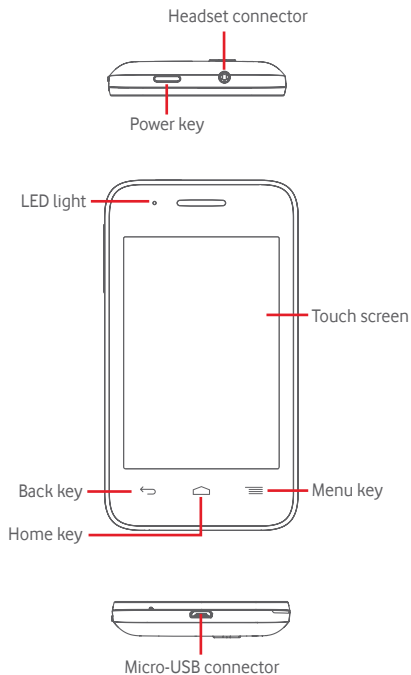
1	Your phone	7
1.1	Keys and connectors	7
1.2	Getting started	9
1.3	Home screen.....	13
1.4	Widgets list.....	21
2	Text input.....	21
2.1	Using the onscreen keyboard.....	21
2.2	Text editing	22
3	Phone call, Call log & Contacts.....	23
3.1	Phone call	23
3.2	View your call history	30
3.3	People.....	30
4	Messaging & Email.....	37
4.1	Messaging	37
4.2	Gmail/Email	44
5	Calendar, Alarm clock & Calculator	47
5.1	Calendar.....	47
5.2	Clock.....	49
5.3	Calculator	50
6	Getting connected.....	52
6.1	Connecting to the Internet	52
6.2	Browser	55

6.3	Connecting to Bluetooth devices	60
6.4	Connecting to a computer via USB	61
6.5	Sharing your phone's mobile data connection.....	62
6.6	Connecting to virtual private networks	64
7	Google Play Store	66
8	Multimedia applications	67
8.1	Camera.....	67
8.2	Gallery.....	69
8.3	Play music.....	72
8.4	Video player.....	74
9	Google Maps	75
9.1	Get My Location.....	75
9.2	Search for a location	76
9.3	Save a location	76
9.4	Open Street View for a location	77
9.5	Get driving, public transportation or walking directions.....	77
10	Others.....	78
10.1	File Manager.....	78
10.2	Sound Recorder.....	78
10.3	Radio.....	79

11	Settings.....	81
11.1	Wireless & networks.....	81
11.2	Device.....	84
11.3	Personal.....	86
11.4	Accounts.....	93
11.5	System.....	93
12	Update your phone's system.....	100
13	Product safety information.....	101
14	Telephone warranty	111
15	Accessories	113
16	Specifications.....	114

1 Your phone

1.1 Keys and connectors



Menu key

- Touch: display menu options. On the Home screen, touch to access **Wallpapers, Widgets and Settings**.
- Touch & hold: this shows you images of your most recently-used apps. Touch an image to open the associated app, or swipe it left or right to remove it from the list.



Home key

- While on any app or screen, touch the **Home** key to return to the main Home screen.
- Touch & hold this key to access **Google Now & Voice Search**.



Back key

- Touch to go back to the previous screen, or to close a dialogue box, options menu, the Notification panel, etc.



Power key

- Press: activate the lock screen/wake up the screen.
- Press and hold: show the pop-up menu to select from **Power off**, **Restart**, **Airplane mode**, and icons for ringing modes.
Press and hold: power on.
- Press and hold the **Power** key and the **Volume down** key to capture a screenshot.



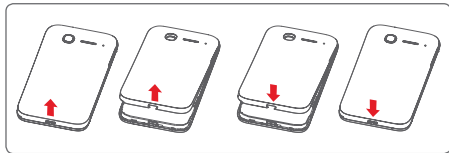
Volume keys

- During a call, they adjust the earpiece or headset volume.
- In Music/Video/Streaming mode, they adjust the media volume.
- In general mode, they adjust the ringtone volume.
- Mute the ringtone of an incoming call.
- In Camera mode, pressing either volume key captures a photo.

1.2 Getting started

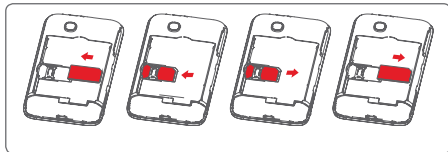
1.2.1 Set-up

Removing or installing the back cover



Inserting or removing the SIM card

You must insert your SIM card to make phone calls. Please power off your phone before inserting or removing the SIM card.



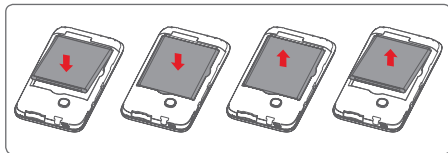
Place the SIM card with the chip facing downwards and slide it into its housing. Make sure that it is correctly inserted. To remove the SIM card, press and slide it out.



Your phone only supports mini-SIM cards. Do not attempt to insert other SIM card types, like micro-SIMs or nano-SIMs, otherwise this may cause damage to your phone.

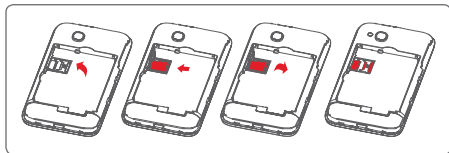
Installing or removing the battery

Please power off your phone before removing the battery.



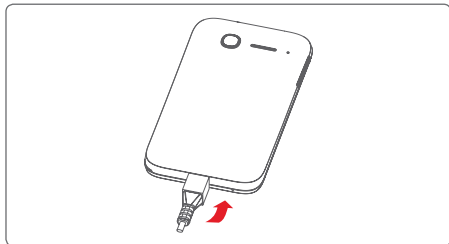
- Insert the battery and click it into place, then close the cover.
- Unclip the cover, then remove the battery.

Installing the microSD card



First remove the battery. Slide the microSD holder to the left to unlock it, then lift it up. Place the microSD card in the space provided, with the gold contacts facing down. Then fold the microSD holder down and slide it to the right until it locks.

Charging the battery



To charge the battery, connect the charger to your phone and mains socket. You can also charge your phone via a USB cable.



To reduce energy wastage, disconnect your charger from the plug when the battery is fully charged.

To reduce your phone's power consumption, switch off Wi-Fi, Bluetooth or apps running in the background when not needed. In Settings you can also lower the brightness of the screen, and shorten the length of time before the screen goes to sleep.

1.2.2 Power on your phone

Hold down the **Power** key until the phone powers on. It will take a few seconds before the screen lights up. Unlock your phone (Slide, PIN, password or pattern) if necessary and confirm. The Home screen will be displayed.

If you do not know your PIN code or if you have forgotten it, contact your network operator. Do not leave your PIN code with your phone. Store this information in a safe place when not in use.

Set up your phone for the first time

The first time you power on the phone you will be asked to set the following options: language, mobile data, Google account, date & time, etc.

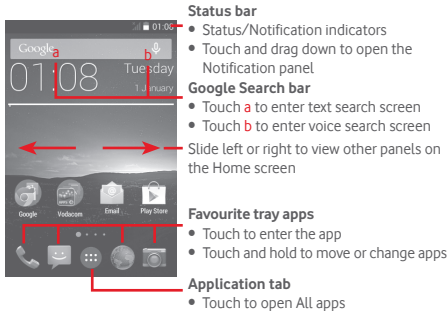
- 1 Select the phone's language, then touch **Start**.
 - 2 Select **Mobile Data**, then touch **Next**.
 - 3 **Setup Google account:** Touch **Setup now**. If you have a Google Account, touch Existing to sign in, then enter your user name and password. If you forget your password, you can go to <http://www.google.com/> to retrieve it. If you don't own a Google Account, you are prompted to create one by touching **New**.
 - 4 Touch **Next** to go to **Date & Time**, to set your date and time zone (you can also choose Automatic time zone), then touch **Finish** to confirm.
- If you power on your phone with no SIM card inserted you will still be able to connect to a Wi-Fi network to sign into your Google account and to use some features.

1.2.3 Power off your phone

Hold down the **Power** key from the Home screen until the Phone options appear, then select **Power off**.

1.3 Home screen

You can bring all your favourite items (apps, shortcuts, folders and widgets) to your Home screen for quick access. Touch the **Home** key to switch to the Home screen.



The Home screen extends on the right side of the screen to allow more space for adding apps, shortcuts, etc. Slide the Home screen horizontally left and right to get a complete view of the Home screen. The white spot in the lower part of the screen indicates which screen you are viewing.

1.3.1 Using the touchscreen

Touch 

To access an app, touch it with your finger.

Touch and hold 

Touch and hold the Home screen to access the available options for setting the wallpaper.

Drag 

Touch and hold an item to be able to drag it to another location.

Slide/Swipe 

Slide the screen to scroll up and down lists, screens of apps, images, web pages, etc.

Flick 

Similar to swiping, but flicking makes it move quicker.

Pinch/Spread 

Place your fingers of one hand on the screen surface and draw them apart or together to scale an element on the screen.





























Rotate 

Automatically change the screen orientation from portrait to landscape by turning the phone sideways.





























1.3.2 Status bar

From status bar, you can view both phone status (on the right side) and notification information (on the left side).

Status icons

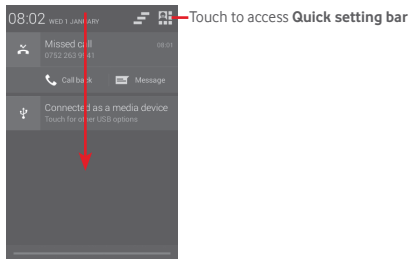
	GPRS connected		Alarm is set
	GPRS in use		Roaming
	EDGE connected		No SIM card inserted
	EDGE in use		Vibrate mode
	3G connected		Ringer is silenced
	3G in use		Phone microphone is mute
	HSPA (3G+) connected		Battery is very low
	HSPA (3G+) in use		Battery is low
	HSPAP (3G+) connected		Battery is partially drained
	HSPAP (3G+) in use		Battery is full
	Connected to a Wi-Fi network		Battery is charging
	Bluetooth is on		Headset connected
	Connected to a Bluetooth device		No signal
	Airplane mode		Signal strength

Notification icons


	New Gmail™ message		Call in progress
	New text or multimedia message		Missed call
	Problem with SMS or MMS delivery		Call on hold
	New Hangouts message		Call forwarding is on
	New voicemail		Uploading data
	Upcoming event		Downloading data
	Data is synchronising		Download finished
	No microSD card installed		An open Wi-Fi network is available
	Song is playing		Phone is connected via USB cable
	Screenshot error		Radio is on
	USB tethering is on		System update available
	Portable Wi-Fi hotspot is on		Connected to VPN
	Screenshot captured		International Roaming is enabled
	Carrier data use threshold approaching or exceeded		International Roaming is disabled

Notification panel

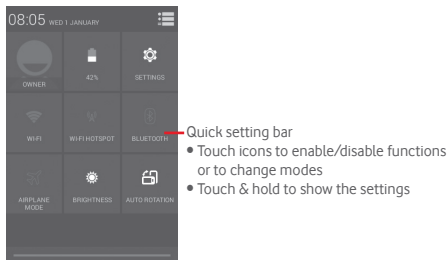
Touch and drag down the Status bar to open the Notification panel. Touch and drag up to close it. From the Notification panel, you can open items and other reminders indicated by notification icons or view wireless service information.



Touch a notification and slide it sideways to delete it.

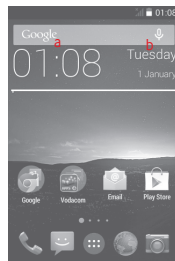
Touch the icon  to clear all event-based notifications (other ongoing notifications will remain).

Touch  and then the Settings icon  to access **Settings**.




1.3.3 Search bar


The phone provides a Search function which can be used to locate information within applications, the phone or the web.



a Search by text

- Touch Search bar from the Home screen.
- Enter the text/phrase you want to search for.
- Touch  on the keyboard if you want to search on the web.



b Search by voice

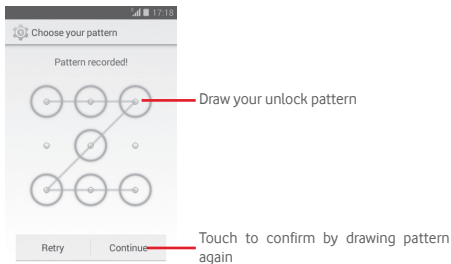
- Touch  from Search bar to display a dialogue screen.
- Speak the word/phrase you want to search for. A list of search results will display for you to select from.

1.3.4 Lock/Unlock your screen

To protect your phone and privacy, you can lock your phone screen with a variety of patterns, PIN or password, etc. through **Settings > Security > Screen lock**.

To create a screen unlock pattern (Follow onscreen instructions)

- Drag down the Notification panel and touch  and then the Settings icon  to access **Settings**, then touch **Security > Screen lock > Pattern**.
- Draw your own pattern.



To create a screen unlock PIN/Password


- Touch **Settings > Security > Screen lock > PIN** or **Password**.
- Set your PIN or password.

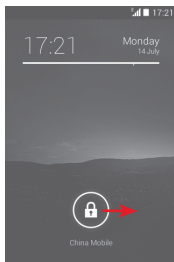
To lock phone screen

Press the **Power** key once to lock the screen.

To unlock phone screen


Press the **Power** key once to light up the screen, draw the unlock pattern you have created or enter PIN or password to unlock the screen.

If you have chosen **Slide** as the screen lock, touch and drag the icon  right to unlock the screen.



1.3.5 Personalise your Home screen

Add an app or widget

Touch the Application tab  or Menu key, then touch and hold the app or widget to activate the Move mode, and drag the item to any Home screen.

Move an app or widget

Touch and hold the item to be repositioned to activate the Move mode, drag the item to the desired position and then release. You can move items both on the Home screen and the Favourite tray. Hold the icon on the left or right edge of the screen to drag the item to another Home screen.

Remove an app or widget

Touch and hold the item to be removed to activate the Move mode, drag the item up to the top of the **Remove** icon, and release after the item turns red.

Create folders

To make it easier to organise apps and shortcuts on the Home screen and the Favourite tray, you can add them to a folder by stacking one item on top of another. To rename a folder, open it and touch the folder's title bar to input the new name.

Wallpaper customisation

Touch and hold an empty area on the Home screen or go to **Settings > Display > Wallpaper** to customise your wallpaper.

1.3.6 Application tab

Touch  from the Home screen to show a list of all your apps.

To return to the Home screen, touch the **Home** key.

1.3.7 Volume adjustment

You can set the ringer, media and phone ringtone volume by pressing the **Volume up/down** key or go to **Settings > Sound**.

1.4 Widgets list

The list contains all pre-installed and newly installed widgets.


To open the list, touch the **Menu** key and then **Widgets**. To return to the Home screen, touch the **Home** key or the **Back** key.

Touch the icon  to access the Play Store.

2 Text input

2.1 Using the onscreen keyboard

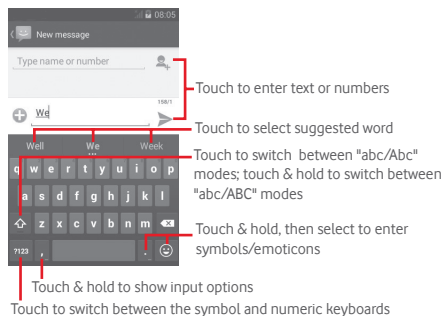
Onscreen keyboard settings

Touch the Application tab from the Home screen, select **Settings > Language & input**, then touch the Settings icon  on the right of **Google Keyboard**.

Adjust the onscreen keyboard orientation





Turn the phone sideways or upright to adjust the Onscreen Keyboard orientation. You can also adjust it by changing the settings (go to **Settings > Display > Auto rotate screen**).

2.1.1 Google Keyboard



2.2 Text editing

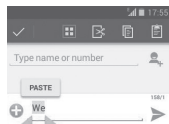
You can edit the text you have entered.

- Touch and hold or double-tap on the text you would like to edit.
- Drag the end points to change the highlighted selection.
- The following options will show: **Select all** , **Cut** , **Copy**  and **Paste** .

Touch the icon  to confirm.

You can also insert new text

- Touch where you want to type, or touch and hold a blank space, the cursor will blink and the tab will show. Drag the tab to move the cursor.
- If you have selected any text, touch the tab to show **PASTE** icon which allows you to paste any text you have previously copied.



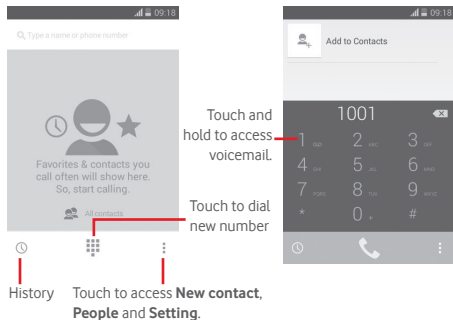
3 Phone call, Call log & Contacts

3.1 Phone call



3.1.1 Placing a call

You can easily make a call using **Phone**. Touch the Application tab from the Home screen and select **Phone**.



Enter the number you want from the dialpad directly or select a contact from **Contacts** or **History** by sliding or touching tabs, then touch to place the call.

The number you entered can be saved to **Contacts** by touching key and selecting **Add to Contacts**.

If you make a mistake, you can delete the incorrect digits by touching .

To hang up a call, touch .

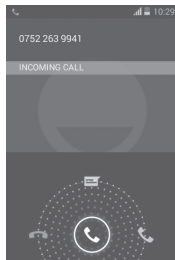
International call

To dial an international call, touch and hold to enter "+", then enter the international country prefix followed by the full phone number and finally touch **Call**.

Emergency call

If your phone has network coverage, dial emergency number and touch to make an emergency call. This works even without a SIM card and without typing the PIN code.

3.1.2 Answering or rejecting a call



When you receive a call, touch .

- Slide the icon right to answer the call;
- Slide the icon left to reject the call;
- Slide the icon up to reject the call by sending a preset message.


To mute incoming calls, press the **Volume up/down** key or turn the phone face down if **Turn over to mute** is active (to turn this on, go to **Settings > Gestures > Turn over to mute**).

3.1.3 Calling your voicemail

Your voicemail is provided by your network to avoid missing calls. It works like an answering machine that you can consult at any time.

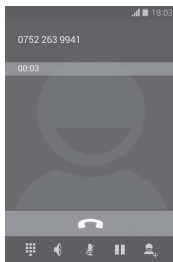
To access your voicemail, touch and hold on **Phone** tab.


To set your voicemail number, touch key and touch **Settings > Voice call > Voicemail**.


If you receive a voicemail, a voicemail icon  appears on the Status bar. Open the Notification panel, touch **New voicemail**.


3.1.4 During a call


To adjust the volume during a call, press the **Volume up/down** key.




 Touch to hold the current call. Touch this icon again to retrieve the call.

 Touch to display Dialpad.

 Touch to end the current call.

 Touch to mute the current call. Touch this icon again to unmute the call.

 Touch to activate the speaker during the current call. Touch this icon again to deactivate the speaker.

Touch  and select **Start recording** to record.









To avoid misoperation on touchscreen during a call, screen will be locked automatically when you put the cellphone close to your ear; and it will be unlocked when the cellphone is taken away from your ear.

3.1.5 Managing multiple calls

With this phone you can handle multiple calls at the same time.

Conference calls ⁽¹⁾

You can set up a conference call.

- Place a call to the first participant of the conference call.
- Enter the phone number of the person you want to add to conference and touch . You can also add participants from **People** or **History**.
- Touch icon  to start a conference call.
- During a conference call, touch  to drop a participant or to talk privately to one of the participants. Touch  to drop the participant from the conference, touch  to talk privately to the participant and hold on other participants.
- Touch  to end the conference call and disconnect all callers.

⁽¹⁾ Depending on your network operator.

3.1.6 Call settings

Touch  key and select **Settings** from Dial screen, the following options are available:

Voice call

- **Voicemail**

Service Opens a dialogue box where you can select your carrier's voicemail service or another service.

Voicemail settings If you are using your carrier's voicemail service, this opens a dialogue box where you can enter the phone number to use for listening to and managing your voicemail. You can enter a comma (,) to insert a pause into the number — for example, to add a password after the phone number.

- **Call forwarding**

Touch to configure how your calls are always forwarded or when you are busy, unanswered or unreachable.

- **Call barring**

You can activate or deactivate the call barring for outgoing and incoming calls. The various options are:

All outgoing calls All outgoing calls are barred.

International outgoing calls Outgoing international calls are barred.

International except home Outgoing international calls except those to your country of subscription are barred.

All incoming calls All incoming calls are barred.

Incoming calls in roaming Incoming calls are barred when you are abroad.

Cancel all Deactivate all call barring.

Change barring password Change the original barring password for activating call barring.

- **Additional settings**

Caller ID Opens a dialogue box where you can set whether your phone number is displayed when making calls.

Call waiting Mark the check box to notify you of a new incoming call.

Call waiting status Check the call waiting status of your phone.

Other settings

- **Fixed dialing numbers**

Fixed Dialing Number (FDN) is a service mode of SIM, where outgoing calls are restricted to a set of phone numbers. These numbers are added to the FDN list. The most common practical application of FDN is for parents to restrict the phone numbers which their children can dial.

For security reasons, you'll be prompted to enable FDN by entering SIM PIN2 which is usually acquired from your service provider or SIM maker.

- **Minute reminder**

Mark the check box to enable minute reminder at 50s of every minute during a call.

- **Turn over to mute**

Mark the check box to enable mute incoming call by turning phone over.

- **Dual mic noise reduction**

Mark the checkbox to turn on dual mic for noise reduction.

- **Quick responses**

Touch to edit quick responses which will be used when you reject a call with messages.


- **International dialing assist**

Mark the checkbox to activate.

- **Hearing aids**

Mark the checkbox to turn on hearing aid compatibility.

3.2 View your call history

You can view your call history by touching  from the Dial screen to view call history in categories of Incoming calls, Outgoing calls, and Missed calls.

Touch a contact or number to view information or further operations.

You can view detailed information of a call, launch a new call or send messages to a contact or number, or add numbers to **People** (only available for unsaved phone numbers), etc.

Touch the photo  to open the Quick Contact panel.

To clear the entire call memory, touch  key and **Delete**.

3.3 People



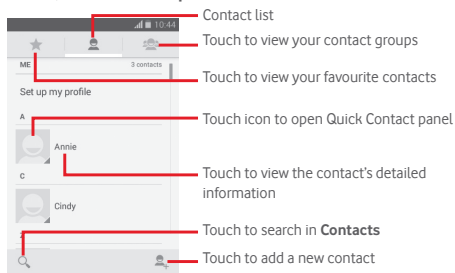
You can view and create contacts on your phone and synchronise these with your Gmail contacts or other apps on the web or on your phone.




When using People for the first time you are asked to add new contacts, import contacts from your SIM card or synchronise contacts from other app accounts to your phone.

3.3.1 View your contacts

To access **People** app, touch the Application tab on the Home screen, then select **People**.





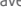
Touch  key to display contacts list option menu.

Following actions are enabled:


- **Delete contact** Select and delete unwanted contacts.
- **Contacts to display** Choose contacts to display.
- **Import/Export** Import or export contacts between phone, SIM card, and microSD card, or share contacts.
- **Accounts** Manage the synchronisation settings for different accounts.
- **Settings** Access to contact display settings.
- **Share visible contacts** Share contacts with others by sending the contact's vCard to them via Bluetooth, Email, SMS, etc.

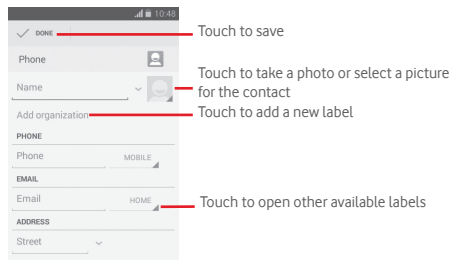
3.3.2 Managing contact groups

The contact group helps you to improve the organisation of your contacts. You can add, remove and view groups in the **Contact group** screen.

Touch the icon  to view local groups. To create a new group, touch the icon , enter the new name and touch **DONE** to confirm. If you have added accounts to your phone, touch the icon  to view groups in accounts.


3.3.3 Adding a contact

Touch the Application tab on the Home screen, select the **People**, then touch the icon , in the contact list to create a new contact.



If you want to add more information, touch **Add another field** to add a new category.

When finished, touch **DONE** to save.

To exit without saving, you can touch  key and then **Discard**.

Add to/remove from Favourites

To add a contact to favourites, you can touch a contact to view details then touch ★ to add the contact to favourites.

To remove a contact from favourites, touch ★ on contact details screen.



Only phone and account contacts can be added to favourites.

3.3.4 Editing your contacts

To edit contact information, touch ≡ key in the contact details screen, then touch **Edit**. When finished, touch **DONE**.

Change a contact's default phone number

The default phone number (the number which has priority when making a call or sending a message) will always be displayed under the contact name.

To change the default phone number, touch and hold the number you want to set as the default number from the contact's details screen, then select **Set default**. A ✓ appears after the number.

This choice is only available when the contact has more than one number.

Delete a contact

To delete a contact, touch ≡ key and touch **Delete** from contact (details) screen.

On contacts list screen, touch ≡ key and then **Delete contact**, select the contact(s) you want to remove and touch **OK** to confirm. Touch **Select all** and then ✓ to select all contacts, touch ✓ again to deselect.



The contact you have deleted will also be removed from other applications on the phone or web the next time you synchronise your phone.

3.3.5 Communicating with your contacts

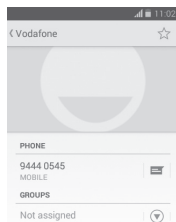
From contact details screen, you can communicate with your contacts by making a call or exchanging messages.

To launch a call, touch the phone number.

To send a message, touch the icon ≡ on the right side of the number.


Use quick contact for Android

Touch a contact's picture to open Quick Contact for Android, then you can touch the number or the icon ≡ for the way you want to connect.




The icons available on Quick Contact panel depend on the information you have for the contact and the applications/accounts on your phone.

3.3.6 Importing, exporting and sharing contacts


From the Contacts screen, touch  key to open the options menu, touch **Import/Export**, then select to import/export contacts from/to your SIM card, Phone, microSD card, Phone storage, Accounts, etc.


To import/export a single contact from/to your SIM card, choose an account and target SIM card(s), select the contact you want to import/export, and touch **OK** to confirm.

To import/export all contacts from/to your SIM card, choose an account and target SIM card(s), touch **Select all** and touch **OK** to confirm.

You can share a single contact or contacts with others by sending the contact's vCard to them via Bluetooth, Gmail, etc. To do this, touch a contact you want to share, touch  key and **Share** from contact details screen, then select the app to perform this action.



3.3.7 Displaying contacts

You can configure which group of contacts, for each account, you want to display in the Contacts list. Touch  key and then **Contacts to display** from contacts list screen, then you can choose contacts to display.



Touch  key and then **Settings**, you can **Sort list by** Given name or Family name, as well as **View contact names as** Given name first or Family name first.

3.3.8 Joining/Discarding contacts

To avoid duplication, you can add any new contact information to existing contacts in a single action.

Touch the contact which you want to add information to, touch  key and then **Edit**, then touch  key in edit screen and touch **Join**.

At this time, you are required to select the contact whose information you want to join with the first contact. The information from the second contact is added to the first one, and the second contact will no longer be displayed in the Contacts list.

To separate contact information, touch the contact whose information you want to separate, touch  key and then **Edit**, then touch  key in edit screen and touch **Separate**, touch **OK** to confirm.


3.3.9 Synchronising contacts in multiple accounts

Contacts, data or other information can be synchronised from multiple accounts, depending on the apps installed on your phone.


To add an account, touch  on Quick setting bar to get to **Settings**, then touch **Add account**.

You are required to select the kind of account you are adding, like Google, Corporate, etc.

As with other account set-ups, you need to enter detailed information, like username, password, etc.

You can remove an account and all associated information from the phone. Open the **Settings** screen, touch the account you want to delete, touch  key and then select **Remove account**, then confirm.

Sync

You can synchronise an account on **Accounts** screen, touch an account in the list, then touch  key and select **Sync now**.

4 Messaging & Email

4.1 Messaging



Your phone can create, edit and receive SMS and MMS messages.

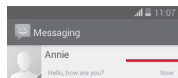
Touch the Application tab from the Home screen, then select **Messaging**.



All messages you receive or send out can be saved in your phone memory or SIM card. To view SMS messages stored on your SIM card, touch key from Messaging screen, then touch **Settings > Text messages (SMS) > Manage SIM messages**.

4.1.1 Create a new message

On the message list screen, touch the new message icon to write new text/multimedia messages.



- Touch to view the whole message thread
- Touch & hold message threads to delete messages or to add shortcut



Touch to create a new message

Touch to search in all messages

Sending a text message

Enter the mobile phone number of the recipient on the **Type name or number** bar or touch to add recipients, then touch the **Enter message** bar to enter the text of the message. When you've finished, touch to send the text message.



An SMS of more than 160 characters will be charged as several SMS. Specific letters (like accents, for example) will also increase the size of the SMS, so this may cause multiple SMS to be sent to your recipient.

Sending a multimedia message


MMS enables you to send video clips, images, photos, animations, slides and audio to other compatible phones and email addresses.

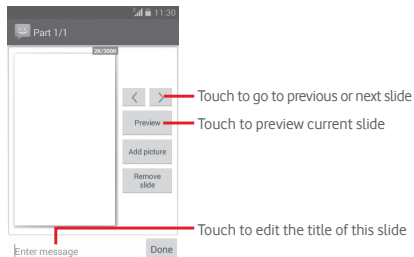
An SMS will be converted to MMS automatically when media files (image, video, audio, slides, etc.) are attached or Subject or email addresses are added.

To send a multimedia message, enter the recipient's phone number in the **Type name or number** bar, touch **Enter message** bar to enter the text of the message, touch key to open the option menu, touch **Add subject** to insert a subject, and touch to attach picture, video, audio and so on.


When finished, touch to send the multimedia message.

Attach options:


- **Pictures** Access Gallery or File manager to select a picture as attachment.
- **Capture picture** Access Camera to capture a new picture for attaching.
- **Videos** Access Gallery or File manager to select a video as attachment.
- **Capture video** Access Camcorder to record a new video for attaching.
- **Record audio** Access Sound Recorder to record a new record.
- **Audio** Access music from **Ringtone** or **Audio**.
- **Slideshow** Enter Edit slide show screen, touch **Add slide** to create a new slide, and touch currently existing slide to edit it (see following picture). Touch  to get more options, like slide duration setting, music adding, etc.
- **Contact** Access **People** to select one or more contact(s) to attach.
- **Calendar** Access **Calendar** to select one or more event(s) to attach.



4.1.2 Manage messages

When a new message comes, an icon  will appear on status bar as notification. Drag down the status bar to open the Notification panel, touch the new message to open it. You can also access **Messaging** and touch the new message to open it.

Messages are displayed in conversational order.

To reply to a message, touch the current message to enter message-composing screen, enter the text, then touch .

Touch and hold a message in message details screen, the following options will be available:

- **Copy** This option is only available for SMS. Touch to copy current message content and past it to **Enter message** bar of the new message you are going to compose.
- **Forward** Touch to forward the message to another recipient.
- **Delete message** Delete the current message.
- **Lock/Unlock message** Touch to lock/unlock message.
- **View message details** Touch to view details of the message.
- **Select text** Touch to select text to **Enter message** bar as new message.
- **Save message to SIM card** This option displays when the message is an SMS. Touch to save the message to SIM card.

4.1.3 Adjust message settings

In message list screen, touch  key and select **Settings**.

Text messages (SMS)

- **Delivery reports** Mark to request a delivery report for each text message you send.
- **Manage SIM messages** Touch to view or manage messages on your SIM card.
- **Edit quick text** Touch to add or edit message templates.
- **SMS service centre** Touch to view or edit your SMS service centre.
- **Validity period** Touch to select SMS validity period.
- **SMS storage location** Touch to select phone or SIM card to store messages.
- **Alphabet management** Touch to manage alphabet.

Multimedia messages (MMS)

- **Group messaging** Mark the checkbox to send a single message to multiple recipients.
- **Delivery reports** Select to request a delivery report for each multimedia message you send.
- **Read reports** Select to request a report on whether each recipient has read a multimedia message sent by you.
- **Send read report** Select to request a report on whether the multimedia message is sent out.
- **Auto-retrieve** Select to download full MMS message (including message body and attachment) automatically to your phone. Otherwise, download only the MMS message header.
- **Roaming auto-retrieve** Select to download full MMS message (including message body and attachment) automatically when roaming. Otherwise, download only the MMS message header to avoid extra charges.
- **Creation mode** Touch to set MMS creation mode when composing message.
- **Maximum message size** Select to edit the message size, but it should not be more than 300KB.
- **Priority** Set MMS priority as **High**, **Normal** or **Low**.

Notifications

- **Notifications** Select to display message notifications in status bar.
- **Mute** Select to make phone mute as a notification when receiving a new message.
- **Select ringtone** Touch to select a ringtone as a new message notification tone.
- **Popup notification** Select to show popup for push notifications.

General

- **Chat wallpaper** Touch to select wallpaper for message background.
- **Message font size** Touch to select message font size.
- **Show email address** Mark the checkbox to include email address in contact results.
- **Delete old messages** Select to delete old messages when maximum number of stored messages is reached.
- **Text message limit** Touch to set the number of text messages to be saved per conversation.
- **Multimedia message limit** Touch to set the number of multimedia messages to be saved per conversation.
- **Enable CB ringtone** Mark/unmark the checkbox to enable/disable cell broadcast ringtone.
- **Select CB ringtone** Touch to select a ringtone for cell broadcast.
- **Cell broadcast** Touch to enable or disable cell broadcast service or to choose language and channel for it.
- **Enable WAP PUSH** Mark the checkbox to enable to receive WAP PUSH.

4.2 Gmail/Email

The first time you set up your phone, you can select to use an existing Gmail account or to create a new Email account.

4.2.1 Gmail





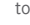



As Google's web-based email service, Gmail is configured when you first set up your phone. Gmail on your phone can be automatically synchronised with your Gmail account on the web. Unlike other kinds of email account, each message and its replies in Gmail are grouped in your inbox as a single conversation; all emails are organised by labels instead of folders.

To access Gmail

From the Home screen, touch the Application tab to enter the applications list, then touch **Gmail**.


To create and send emails

- 1 Touch  from Inbox screen.
- 2 Enter recipient(s)'s email address in **To** field.
- 3 If necessary, touch  key and touch **Add Cc/Bcc** to add a copy or a blind copy to the message.
- 4 Enter the subject and the content of the message.
- 5 Touch  key and select **Attach file** to add an attachment.
- 6 Finally, touch the icon  to send.
- 7 If you do not want to send the mail out right away, you can touch  key and then **Save draft** or touch the **Back** key to save a copy. To view the draft, touch your account name to display all labels, then select **Drafts**.

If you do not want to send or save the mail, you can touch  key and then touch **Discard**.



To add a signature to emails, touch the account of inbox and then touch **Settings** from inbox screen, choose an account, then touch **Signature**.

To receive and read your emails




When a new email arrives, you will be notified by a ringtone or vibration, and an icon  will appear on Status bar.

Touch and drag down the Status bar to display the Notification panel, touch the new email to view it. Or you can also access the Gmail Inbox label and touch the new mail to read it.

You can search for an email by sender, recipient, subject, etc.

- Touch the icon  from Inbox screen.
- Enter the keyword you want to search for in the searching box and touch  on the software keyboard.

To reply or forward emails

- **Reply** When viewing an email, touch  to reply this mail.
- **Reply all** Touch  and select **Reply all** to send message to all people in a mail loop.
- **Forward** Touch  and select **Forward** to forward the received mail to other people.


4.2.2 Email




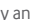


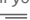
Besides your Gmail account, you can also set up external email accounts on your phone.

Touch the Application tab from the Home screen, then select **Email**.

An email wizard will guide you through the steps to set up an email account.

- 1 Enter the email address and password of the account you want to set up.
- 2 Touch **Next**. If the account you entered is not provided by your service provider in the phone, you will go to the email account settings screen to enter settings manually. Or you can touch **Manual setup** to directly enter the incoming and outgoing settings for the email account you are setting up.
- 3 Enter the account name and display name in account setup.
- 4 To add another email account, you can touch  key and **Settings**. Touch **ADD ACCOUNT** on the right of the title to create a new account.

To create and send emails

- 1 Touch the icon , on Inbox screen.
- 2 Enter recipient(s) email address(es) in the **To** field.
- 3 If necessary, touch  key and touch **Add Cc/Bcc** to add a copy or a blind copy to other recipients.
- 4 Enter the subject and the content of the message.
- 5 Touch  key, then touch **Attach file** to add an attachment.
- 6 Finally, touch  to send.
- 7 If you do not want to send the mail right away, you can touch  key and **Save draft** or touch the **Back** key to save a copy.

5 Calendar, Alarm clock & Calculator

5.1 Calendar




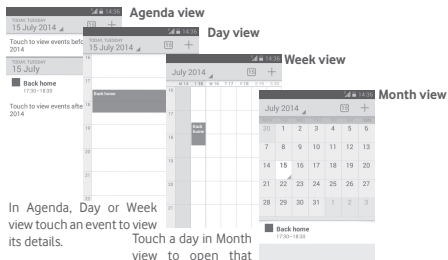
Use Calendar to keep track of important meetings, appointments, etc.

To access this function, touch the Application tab from the Home screen, then touch **Calendar**.

5.1.1 Multimode view

You can display the Calendar in daily, weekly, monthly, or agenda view.

To change your Calendar view, touch the date title to open a drop-down menu for your options. Touch the icon  to return to Today's view.




In Agenda, Day or Week view touch an event to view its details.

Touch a day in Month view to open that day's events.




5.1.2 To create new events

You can add new events from any Calendar view.


- Touch the icon  to access new event edit screen.
- Fill in all required information for this new event. If it is a whole-day event, you can select **All day**.
- When finished, touch **DONE** from the top of the screen.

To quickly create an event from Day, Week view screen, touch and hold an empty spot or an event to open Option menu, then touch **New event** to enter the event details screen of the time you have previously selected. Or you can also touch an empty spot till it turns blue, then tap again to enter new event editing screen.

5.1.3 To delete or edit an event

To share, delete or edit an event, touch the event to enter details screen, touch the icon  to share the event to other people by Bluetooth, Email and messaging, etc., touch the icon  to edit the event, and touch the icon  to delete.


5.1.4 Event reminder

If a reminder is set for an event, the upcoming event icon  will appear on Status bar as a notification when the reminder time arrives.

Touch and drag down the status bar to open the Notification panel, touch event name to view Calendar notification list.

Touch **Snooze** to turn off all event reminders for 5 minutes.

Touch **Back** key to keep the reminders pending in the status bar and the Notification panel.

Important options by touching  key from Calendar main screen:


- **Refresh** To refresh the calendar.
- **Search** To search in the calendar.
- **Calendars to display** To show or hide the synchronised calendars.
- **Clear events** To clear events in the calendar.
- **Go to** Select to go to specific date.
- **Settings** To set a series of Calendar settings.

5.2 Clock





Your mobile phone has a built-in clock.

To access this function, touch the Application tab from the Home screen, then touch **Clock**.

Touch  to add or set an alarm.


5.2.1 To set an alarm

From **Time** screen, touch  to enter **Alarms** screen, touch  to add a new alarm. Following options will show:

- **Time** Touch numbers to set the time for your alarm.
- **Label** Touch to set a name for the alarm.
- **REPEAT** Touch to select days you want alarm to work.
- **OCEAN** Touch to select an alarm ringtone.
- **VIBRATE** Select to activate vibration.

Touch and hold an already existing alarm and touch  to delete the selected alarm.

5.2.2 To adjust alarm settings

Touch  key from **Alarms** screen. The following options will be available under **Settings**:

CLOCK

- **Style** Touch to set **Analog** or **Digital** style.
- **Automatic home clock** Touch to set home clock while travelling outside.
- **Home time zone** Touch to set home time zone.

ALARMS

- **Silence after** Touch to set time silence.
- **Snooze length** Touch to choose length of snooze.
- **Alarm volume** Touch to set alarm volume.
- **Volume buttons** Touch to choose **Snooze**, **Dismiss** or **Do nothing** as volume buttons.
- **Turn over to activate** Touch to choose **Snooze** or **Stop** as turn over behaviour.

5.3 Calculator




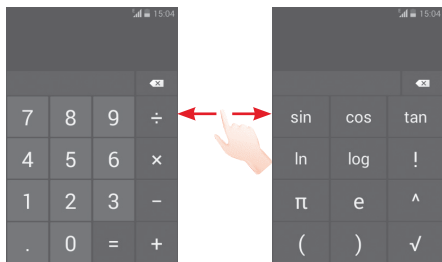
With Calculator, you can solve many mathematical problems.

To access this function, touch the Application tab from the Home screen, then touch **Calculator**.

There are two panels available: Basic panel and Advanced panel.

To switch between panels, select one of the following two ways:

- Touch and drag the basic screen to the left to open the Advanced panel.
- Or touch  key from basic panel to open option menu and touch **Advanced panel**.



6 Getting connected

Your phone can connect to the Internet using either GPRS/EDGE/3G or Wi-Fi.

6.1 Connecting to the Internet




6.1.1 GPRS/EDGE/3G

The first time you turn on your phone with the SIM card inserted, it will automatically configure a mobile network service: GPRS, EDGE or 3G. If the network is not connected, you can turn on **Mobile data** on **Settings > Data usage**.

To check the network connection you are using, touch the Application tab on the Home screen, then touch **Settings > More... > Mobile networks > Access Point Names** or **Network operators**.


To create a new access point

A new GPRS/EDGE/3G network connection can be added to your phone with the following steps:

- 1 Touch  on Quick setting bar to get to **Settings**.
- 2 Touch **More... > Mobile networks > Access Point Names**.
- 3 Then touch  key and select **New APN**.
- 4 Enter the required APN information.
- 5 When finished, touch  key and **Save**.

To activate/deactivate Data roaming



When roaming, you can decide to connect/disconnect to a data service.

- 1 Touch  on Quick setting bar to get to **Settings**.
- 2 Touch **More... > Mobile networks**.
- 3 Mark/Unmark the checkbox to activate or deactivate data roaming.
- 4 When Data roaming is deactivated, you can still perform data exchange with a Wi-Fi connection (refer to "**6.1.2 Wi-Fi**").

6.1.2 Wi-Fi



You can connect to the Internet when your phone is within range of a wireless network. Wi-Fi can be used on the phone even without a SIM card inserted.

To turn Wi-Fi on and connect to a wireless network

- 1 Touch  on the Quick setting bar to go to **Settings**.
- 2 Touch the switch  beside Wi-Fi to turn on/off Wi-Fi.
- 3 Touch **Wi-Fi**: detailed information of all detected Wi-Fi networks is displayed in the Wi-Fi networks section.
- 4 Touch a Wi-Fi network to connect to it. If the network you selected is secured, you are required to enter a password or other credentials (contact network operator for details). When you're finished, touch **Connect**.



To activate notification when a new network is detected

When Wi-Fi is on and the network notification is activated, the Wi-Fi icon will appear on the status bar whenever the phone detects an available wireless network within range. The following steps activate the notification function when Wi-Fi is on:

- 1 Touch  on Quick setting bar to get to **Settings**.
- 2 Touch **Wi-Fi**, then  key and select **Advanced**.
- 3 Mark/Unmark the **Network notification** checkbox to activate/deactivate this function.

To add a Wi-Fi network

When Wi-Fi is on, you may add new Wi-Fi networks according to your preference.

- 1 Touch  on Quick setting bar to get to **Settings**.
- 2 Touch **Wi-Fi**, and then touch .
- 3 Enter the name of the network and any required network information.
- 4 Touch **Save**.

When successfully connected, your phone will be connected automatically the next time you are within range of this network.

To forget a Wi-Fi network

The following steps prevent automatic connections to networks which you no longer wish to use.

- 1 Turn on Wi-Fi, if it's not already on.
- 2 In the Wi-Fi screen, touch & hold the name of the saved network.
- 3 Touch **Forget network** in the dialogue that opens.

6.2 Browser

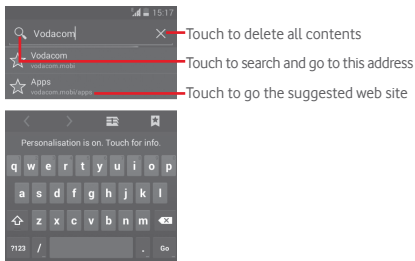


Using the Browser you can enjoy surfing the Web.

To get onto the Web, touch the Application tab from the Home screen, then touch **Browser**.

To go to a web page

On Browser screen, touch the URL box at the top, enter the address of the web page, then touch **Go** to confirm.



To set homepage

- 1 Touch key from Browser screen to display option menu, touch **Settings > General > Set homepage**.
- 2 Choose a page or most visited website as your homepage.
- 3 If you choose **Other**, enter the URL of the website you want to set as your homepage, touch **OK** to confirm.

6.2.1 Viewing web pages

When opening a website, you can navigate on web pages by sliding your finger on the screen in any direction to locate the information you want to view.

To find text on a web page

- 1 Touch key from web page screen, then touch **Find on page**.
- 2 Enter the text or phrase you want to find.
- 3 The first word with matching characters will be highlighted on the screen, and subsequent matches will be boxed.
- 4 Touch the up or down arrow to switch to the previous or next matching items.
- 5 When finished, you can touch or the **Back** key to close the search bar.

To open new window/switch between windows

Multiple windows can be opened at the same time for your convenience.

- 1 Touch to open all windows' thumbnails.
- 2 Slide up and down to view all windows, touch one to view it.
- 3 Touch to open a new window.
- 4 To close a window, touch on the window you want to close or slide it sideways.

Other options:


- **Refresh** To refresh the current page.
- **Stop** To stop opening the current page.
- **Home page** To get back to the homepage you set.
- **Save to bookmarks** To add the current website page as bookmark.
- **Close** To close all tabs and exit.
- **Share page** To share the current page with your friends via various ways, like Message, Email, Bluetooth, etc.
- **Find on page** To input contents you want to find on the current page.
- **Request desktop site** To enable/disable computer version websites.
- **Bookmarks/History** To see the bookmarks and browsing history.
- **Settings** To access a series of Browser settings.
- **Version** To see the version of browser.

6.2.2 Manage links, history, downloads

To manage a link, phone number or address displayed on a web page

- **Link** Touch the link to open the web page.
Touch and hold the link to open options for further operation, like open in new window, save link, Copy link URL, etc.
- **Phone number** Touch to call the phone number.
- **Address** Touch to open Google Maps and locate the address.


To view Browser history

- Touch  key from Browser screen.
- Touch **Bookmarks/History**.
- Touch **History** tab to view browser history.

To download a web application/view your downloads

Before downloading a web application, you need to enable your phone to install web applications (touch the Application tab from the Home screen, touch **Settings > Security**, mark checkbox of **Unknown sources**, finally touch **OK** to confirm).


To download a item, touch the item or the link you want to download.

To cancel a download, touch the downloaded item from the Notification panel, touch and hold the item to be deleted, and touch  to confirm.



To view items you have downloaded, touch the Application tab, then touch **DOWNLOADED**.

Manage bookmarks

To bookmark a web page

- Open the web page you want to bookmark.
- Touch  key and touch **Save to bookmarks**, or from the **History** screen, touch the star beside the URL.
- Enter the name and the location if needed and touch **OK** to confirm.


To open a bookmark

- Touch  key and touch **Bookmarks/History**, or touch the icon  to enter the Bookmarks screen.
- Touch the bookmark you want to open.
- You can also touch and hold to display the options screen, then touch **Open** or **Open in new window**.

Touch and hold a bookmark in the bookmark list to view additional options:


- **Edit bookmark** To edit the bookmark.
- **Add shortcut to Home** To add a bookmark shortcut to the Home screen.
- **Share link** To share the bookmark.
- **Copy link URL** To copy the bookmark link.
- **Delete bookmark** To delete the bookmark link.
- **Set as homepage** To set this page as the homepage.

6.2.3 Settings



A series of settings are available for your adjustment. To access Browser settings, touch  key from Browser screen, and touch **Settings**.

6.3 Connecting to Bluetooth devices



Bluetooth is a short-range wireless communication technology that you can use to exchange data, or connect to other Bluetooth devices for various uses.

To access this function, touch  on Quick setting bar to get to **Settings**, then touch **Bluetooth**, your device and other available ones will show on the screen.



To turn on Bluetooth

- 1 Touch  on Quick setting bar to get to **Settings**.
- 2 Touch  to activate/deactivate this function.

To make your phone more recognisable, you can change your phone name which is visible to others.


- 1 Touch  on Quick setting bar to get to **Settings**.
- 2 Touch **Bluetooth**.
- 3 Touch  key and select **Rename phone**.
- 4 Enter a name, and touch **Rename** to confirm.

To make device visible

- 1 Touch  on Quick setting bar to get to **Settings**.
- 2 Touch **Bluetooth**.
- 3 Touch your device to make it visible or invisible.
- 4 Touch  key and select **Visibility timeout** to select the visible time.

To pair/connect your phone with a Bluetooth device

To exchange data with another device, you need to turn Bluetooth on and pair your phone with the Bluetooth device with which you want to exchange data.

- 1 Touch  on Quick setting bar to get to **Settings**.
- 2 Touch **Bluetooth**.
- 3 Touch **SEARCH FOR DEVICES**.
- 4 Touch a Bluetooth device you want to be paired with in the list.
- 5 A dialogue will popup, touch **Pair** to confirm.
- 6 If the pairing is successful, your phone connects to the device.

To disconnect/unpair from a Bluetooth device

- 1 Touch the device name you want to unpair.
- 2 Touch **Unpair** to confirm.

6.4 Connecting to a computer via USB

With the USB cable, you can transfer media files and other files between your phone and computer.

To connect/disconnect your phone to/from the computer:

Use the USB cable that came with your phone to connect the phone to a USB port on your computer. You will receive a notification that the USB is connected.


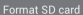
If you want to change the USB connection type, open the Notifications panel and touch .

To locate data you have transferred or downloaded in the internal storage:

- 1 Touch the Application tab from the Home screen to open the apps list.
- 2 Touch **File Manager**.

All data you have downloaded is stored in **File Manager**, where you can view media files (videos, photos, music and others), rename files, install apps onto your phone, etc.


To format a microSD card

- 1 Touch  on Quick setting bar to get to **Settings**.
- 2 Touch **Storage**.
- 3 Touch **Format SD card**, a popup message appears to warn you that formatting the microSD card will erase its contents.
- 4 Touch  to confirm.

6.5 Sharing your phone's mobile data connection

You can share your phone's mobile data connection with a single computer via a USB cable (USB tethering) or with up to eight devices at once by turning your phone into a portable Wi-Fi hotspot.

To turn on USB tethering or Portable Wi-Fi hotspot



- 1 Touch  on Quick setting bar to go to **Settings**.
- 2 Touch **More... > Tethering & portable hotspot**.
- 3 Mark the checkbox of **USB tethering** or turn on **Wi-Fi hotspot** to activate this function.






Sharing data may incur additional charges from your network operator. Extra fees may also be charged in roaming areas.

To share your phone's data connection via USB

Use the USB cable that along with your phone to connect the phone to a USB port on your computer.



- 1 Drag down the Notification panel and touch  then the Settings icon  to access **Settings**.
- 2 Touch **More... > Tethering & portable hotspot**.
- 3 Mark/unmark the checkbox of **USB tethering** to activate/deactivate this function.

To share your phone's data connection as a portable Wi-Fi hotspot

- 1 Drag down the Notification panel and touch  then the Settings icon  to access **Settings**.
- 2 Touch **More... > Tethering & portable hotspot**.
- 3 Touch the switch  beside **Wi-Fi hotspot** to activate/deactivate this function.

To rename or secure your portable hotspot



When Portable Wi-Fi hotspot is activated, you could change the name of your phone's Wi-Fi network (SSID) and secure its Wi-Fi network.

- 1 Drag down the Notification panel and touch  then the Settings icon  to access **Settings**. Drag down the Notification panel and touch then the Settings icon to access **Settings**.
- 2 Touch **More... > Tethering & portable hotspot > Wi-Fi hotspot**.
- 3 Touch **Set up Wi-Fi hotspot** to change the network SSID or set your network security.
- 4 Touch **Save**.

6.6 Connecting to virtual private networks

Virtual private networks (VPNs) allow you to connect to the resources inside a secured local network from outside that network. VPNs are commonly deployed by corporations, schools, and other institutions so that their users can access local network resources when not inside that network, or when connected to a wireless network.

To add a VPN

- 1 Touch  on Quick setting bar to get to **Settings**.
- 2 Touch **More... > VPN** and then touch .
- 3 In the screen that opens, follow the instructions from your network administrator to configure each component of the VPN settings.
- 4 Touch **Save**.


The VPN is added to the list on the VPN settings screen.



Before adding a VPN, you should set a lock screen pattern, PIN code or password for your phone.

To connect/disconnect to a VPN

To connect to a VPN:


- 1 Touch  on Quick setting bar to get to **Settings**.
- 2 Touch **More... > VPN**.
- 3 VPNs you have added are listed; touch the VPN you want to connect with.
- 4 In the dialogue that opens, enter any requested credentials and touch **Connect**.

To disconnect:

- Open the Notification panel and touch the resulting notification for VPN disconnection.

To edit/delete a VPN

To edit a VPN:

- 1 Touch  on Quick setting bar to get to **Settings**.
- 2 Touch **More... > VPN**.
- 3 VPNs you have added are listed; touch & hold the VPN you want to edit.
- 4 Touch **Edit profile**.
- 5 After finished, touch **Save**.

To delete:

- Touch and hold the VPN you want to delete, in the dialogue that opens, touch **Delete profile**.

7 Google Play Store ⁽¹⁾



Google Play Store is an online software store, where you can download and install applications and games to your Android Powered Phone.

To open Google Play Store:

- Touch the Application tab from the Home screen, then touch **Play Store**.
- For the first time you access Google Play Store, a screen with terms of service pops up for your attention, touch **Accept** to continue.

Touch the top left corner, then touch **HELP** to enter Google Play Shop help page for more information on this function.

⁽¹⁾ Depending on your country and operator.

8 Multimedia applications

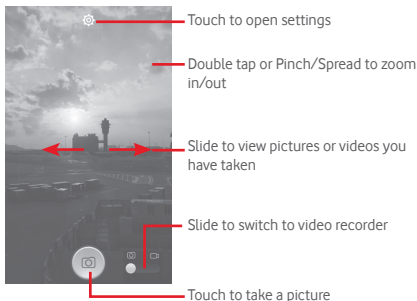
8.1 Camera




Your mobile phone is fitted with a Camera for taking photos and shooting videos.

Before using the Camera, please be sure to open the protective lens cover before use to avoid it affecting your picture quality.




To access this function, touch the Application tab from the Home screen and then touch **Camera**.



To take a picture

The screen acts as the viewfinder. First position the object or landscape in the viewfinder, touch  icon to take the picture which will be automatically saved.


To shoot a video

First position the object or landscape in the viewfinder, and touch  icon to start recording. Touch  to stop recording. Touch , to save the video.

Further operations when viewing a picture/video you have taken

- Touch the icon of Gmail, Bluetooth, Messaging, etc to share the photo or video you have taken.
- Slide right to access **Gallery**.

8.1.1 Settings in framing mode

Before taking a photo/shooting a video, touch the icon  to adjust a number of settings in framing mode.

Camera settings

- **HDR** Touch to switch to HDR mode.
- **Panorama** Touch to switch to Panorama mode.
- **Night** Touch to switch to Night mode.
- **Filter** Touch to switch to Filter mode.
- **Full screen** Touch to turn on/off the full screen view.
- **Shutter sound** Touch to turn on/off shutter sound.
- **Restore defaults** Touch to restore camera settings to default.
- **Advanced** Touch to show series of advanced options: Location Tag, picture size, timer, exposure, etc.
- **Location Tag** Touch to turn on/off Location Tag.
- **Picture size** Touch to select picture size.
- **Timer** Touch to select pause duration before capturing pictures.
- **Exposure** Touch to adjust the value of exposure.

Camcorder settings

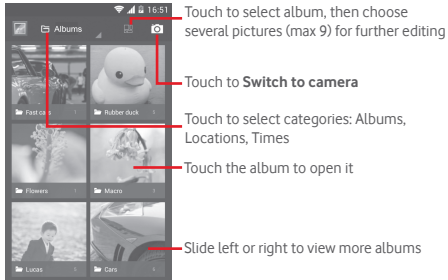
- **Video quality** Touch to set Video quality as **Superfine, Fine or Normal**.
- **Sound recording** Touch to turn on/off sound recording.

8.2 Gallery



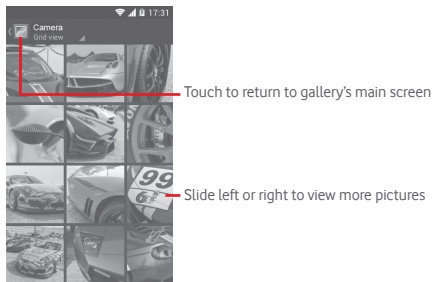
Gallery acts as a media player for you to view photos and playback videos. In addition, a set of further operations to pictures and videos are available for your choice.

To access this function, touch the Application tab from the Home screen, then touch **Gallery**.



To view a picture/play a video



Pictures and videos are displayed by albums in **Gallery**.



- Touch an album and all pictures or videos will spread the screen.
- Touch the picture/video directly to view or play it.
- Slide left/right to view previous or next pictures/videos.

Working with pictures

You can work with pictures by rotating or cropping them, sharing them with friends, setting them as contact photo or wallpaper, etc.

Locate the picture you want to work on, touch the picture from full-screen picture view. Touch icon  to share the picture, touch  icon above and confirm **OK** to delete the picture.



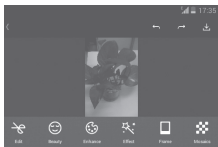
Touch to share the picture through selected apps

Touch to edit the picture: **Beauty, Enhance, Effect, Frame, Mosaics**, etc.

Touch to set the picture as contact photo or wallpaper

Touch to play the slideshow

Touch  from full-screen picture view to edit a picture.



Edit Touch to **Crop, Rotate** or **Sharpen** the picture.

Beauty Touch to beautify the picture by **Dermabrasion, Whitening, Complexion**.

Enhance Touch to open **Color mixing** and **Smart fill light**.

Effect Touch to set effect of **Lomo, Portrait, Fashion** or **Art**.




Frame Touch to choose frame.

Mosaics Touch to add mosaics to the picture.

Word Touch to edit words onto the picture.




Bokeh Touch to set **Circle bokeh** or **Line bokeh**.



After activating the crop mode, the cropping square appears in the middle of the picture. Select the portion to crop, touch  to confirm and  Save, touch  icon to exit without saving.

Batch operation

Gallery provides a multi-select function, so that you can work with pictures/videos in batches.

Open the main Gallery window or an album, touch  key and touch **Select album** to activate batch operation mode (you can also touch and hold one album/picture), then touch albums/pictures you want to work on. Touch  to delete. Touch  to share selected ones.

8.3 Play music



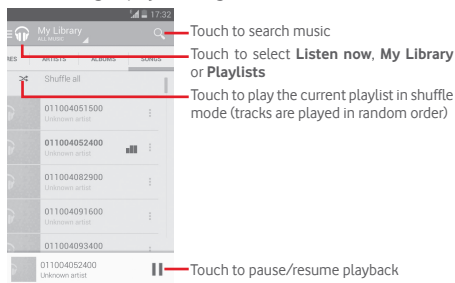
Using this menu, you can play music files stored on the microSD card in your phone. Music files can be downloaded from computer to microSD card using a USB cable.

To access this function, touch the Application tab from the Home screen, then touch **Play Music**.

You will find four categories in which all songs are classified: **GENRES, ARTISTS, ALBUMS** and **SONGS**. Slide left and right to view all. Touch **Shuffle all** to shuffle all songs.

8.3.1 Playing music

Touch a song to play the song.



Touch to search music

Touch to select **Listen now, My Library** or **Playlists**

Touch to play the current playlist in shuffle mode (tracks are played in random order)

Touch to pause/resume playback

Touch the top left corner to get to **SETTINGS**.

GENERAL

Google Account Touch to choose account.

My devices Touch to access your music from up to 10 devices.

Equaliser Touch to get to audio settings.

DEVELOPER

Open-source licences Touch to read licences.

Music version Check version of Music.



While playing songs with Music, the operation of pause, play or skip is still available even if the screen is locked.

Touch  to get available options:

Play next Touch to play the song you choose next.

Add to queue Touch to add the song into playing queue.

Add to playlist Touch to add to playlist.

Go to artist Touch to go to artist.

Go to album Touch to go to album.

Delete Touch to delete the song.

8.4 Video player



To access this function, touch the **Application** tab from the Home screen, then touch **Video player**.

Video player is a small built-in video player that lists all your videos.



Touch an item from the list to play. While playing, touch a point on the timeline to jump to and play from.

9 Google Maps




9.1 Get My Location

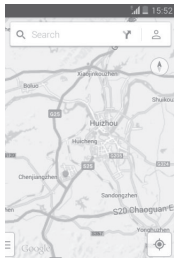
To activate your phone's positioning using Wi-Fi or mobile data connection network:

- 1 Touch  on Quick setting bar to go to **Settings**.
- 2 Touch **Location**.
- 3 Touch the switch  beside Location to turn on.

Touch the Application tab from the Home screen, then touch **Maps**.

Touch  icon on the map to view **My Location**.


The map will then centre on a blue dot. Your actual position at the blue dot.



To move the map, drag the map with your finger.

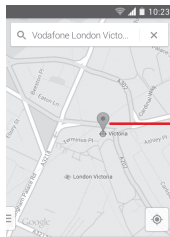
To zoom in and out of a map, pinch or spread your fingers, or you can also zoom in by double-tapping a location on screen.

9.2 Search for a location

While viewing a map, touch the search icon  to activate search function.

In the search box, enter an address, a city or a local business.

Touch the search icon to search, your search results will appear on the map as red dots. You can touch one to show a label.



Touch to show more information

Vodafone London V...
No reviews

Slide left or right to view more search results

9.3 Save a location


Just like bookmarking a web address on the Internet, you can star any position on the map for later use.

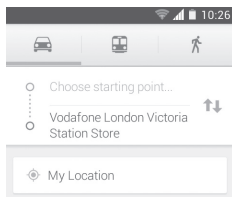
9.4 Open Street View for a location


- 1 Touch and hold a location to display its address at the bottom of the maps screen.
- 2 Drag up the details screen to display a Street View thumbnail.
- 3 Touch **Street view**.

9.5 Get driving, public transportation or walking directions

9.5.1 Get suggested routes for your trip

Touch icon  from Maps screen.



- 1 Touch enter bar to edit your start point by entering an address or selecting a saved item.
- 2 Do likewise for your end point.
- 3 To reverse directions, touch .
- 4 Then select a transport mode: driving by car, using public transportation, or walking directions.
- 5 Touch **Route options** to select **Avoid motorways**, **Avoid tolls** or **Avoid ferries**.
- 6 A couple of suggested routes will appear in a list. Touch any route to view its respective detailed direction.

10 Others

10.1 File Manager



To access this function, touch the Application tab from the Home screen, then touch **File Manager**.

File Manager works with both microSD card and phone storage.

File Manager displays all data stored on both microSD card and phone storage, including applications, media files; videos, pictures or audios you have captured; other data transferred via Bluetooth, USB cable, etc.

When you download an application from PC to microSD card, you can locate the application on File Manager, then touch it to install it in your phone.

File Manager allows you to perform and be really efficient with the following common operations: create (sub) folder, open folder/file, view, rename, move, copy, delete, play, share, etc.

10.2 Sound Recorder



To access this function, touch the Application tab from the Home screen, then touch **Sound Recorder**.

Sound Recorder allows you to record voice/sound for seconds/hours.

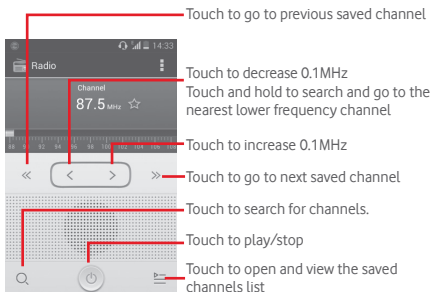
10.3 Radio



Your phone is equipped with a radio⁽¹⁾. You can use the application as a traditional radio with saved channels or with parallel visual information related to the radio program on the display if you turn to stations that offer Visual Radio service.

To access this function, touch the Application tab from the Home screen, then touch **Radio**.

Please insert a headset to improve the FM Radio reception quality.




Available options:

- **Save channel** Save the current tuned station to the channels list.
- **Audio mode** Listen to the radio using loudspeaker or headset.
- **Delete** Delete the channel.
- **Enter frequency** Enter the frequency manually.
- **Station info** Mark the checkbox to get the station information.
- **Exit** Turn off the radio.

⁽¹⁾ The quality of the radio depends on the coverage of the radio station in that particular area.

11 Settings



Drag down the Notification panel and touch  then the Settings icon  to access **Settings**.

11.1 Wireless & networks

11.1.1 Wi-Fi

Using Wi-Fi you can now surf the Internet without using your SIM card whenever you are in range of a wireless network. The only thing you have to do is to enter the **Wi-Fi** screen and configure an access point to connect your phone to the wireless network.


For detailed instructions on using Wi-Fi, please refer to "**6.1.2 Wi-Fi**".

11.1.2 Bluetooth


Bluetooth allows your phone to exchange data (videos, images, music, etc.) in a small range with another Bluetooth supported device (phone, computer, printer, headset, car kit, etc.).

For more information on Bluetooth, please refer to "**6.3 Connecting to Bluetooth devices**".

11.1.3 Data usage

To enable/disable mobile data by touching the switch .

Mark the checkbox of **Set mobile data limit**, then you can drag the limit line and the warning line according to your limitation. Your mobile data connection will be disabled when the specified limit is reached. You can also choose a data usage cycle to view the statistics and related applications of used data by your phone.

Touch  key, and you can view more settings related to your data usage.



Data usage is measured by your phone, and your carrier may count differently. Please consider using a conservative limit.

11.1.4 Airplane mode

Through **More... > Airplane mode** to simultaneously disable all wireless connections including Wi-Fi, Bluetooth and more.

You can also open Airplane mode by touching **AIRPLANE MODE** on Quick setting bar or in phone options when pressing **Power** key.

11.1.5 VPN

A mobile virtual private network (mobile VPN or mVPN) provides mobile devices with access to network resources and software applications on their home network, when they connect via other wireless or wired networks. Mobile VPNs are used in environments where workers need to keep application sessions open at all times, throughout the working day, as the user connects via various wireless networks, encounters gaps in coverage, or suspend-and-resumes their devices to preserve battery life. A conventional VPN cannot survive such events because the network tunnel is disrupted, causing applications to disconnect, time out, fail, or even the computing device itself to crash.

For more information on VPN, please refer to "**6.6 Connecting to virtual private networks**".

11.1.6 Tethering & portable hotspot

This function allows you to share your phone's mobile data connection via USB or as a portable Wi-Fi access point (Please refer to "6.5 Sharing your phone's mobile data connection").

11.1.7 Mobile networks

- **Data connection**

Touch to turn on/off data connection.

- **Data roaming**

Mark the check box to connect to data services when roaming.

- **Preferred networks**

Touch to view/edit/delete preferences.

- **Network mode**

Touch to select network mode.

- **Access Point Names**

You can select your preferred network with this menu.

- **Network operators**

You can select a network operator.

11.1.8 USB Internet

Mark the checkbox to share Windows PC internet via USB cable.

- 1 Connect your phone to your PC with USB cable.
- 2 Select PC system version, then touch **Next**.
- 3 Finish connection as instructed, then touch **Done**.

11.2 Device

11.2.1 Gestures

Mark the checkbox or touch to enable the following gestures:
Turn over to mute, Turn over to activate.

11.2.2 Sound

Use the Sound settings to configure ringtones for different events and environments.

VOLUME

- **Vibrate** Mark the check box to vibrate phone for incoming calls.
- **Silent mode** Mark the check box to silence all sounds except media & alarms.
- **Ringtone & notifications** Slide to adjust volume of Ringtone and notifications.
- **Music, video, games and other media** Slide to adjust multimedia volume of music, video, games, etc.
- **Alarms** Slide to adjust Alarms ringtone volume.

RINGTONES & NOTIFICATIONS

- **Phone ringtone** Touch to select your default incoming call ringtone.
- **Ascending ring** Mark the check box to enable Ascending ring.
- **Notification sound** Touch to select your default notification ringtone.

SYSTEM

- **Dial pad touch tones** Mark the check box to enable playing tones when using dial pad.
- **Touch sounds** Mark the check box to enable playing sound when making screen selection.
- **Screen lock sound** Mark the check box to enable sounds to play when locking and unlocking the screen.
- **Vibrate on touch** Mark the check box to activate vibration when pressing soft keys and on certain UI interactions.

11.2.3 Display

- **Lock screen notifications** Mark the checkbox to show notifications on lock screen.
- **Wallpaper** Touch to set the wallpaper.
- **Brightness** Touch to adjust the brightness of the screen.
- **Auto rotate screen** Mark the checkbox to select whether rotate screen automatically or not.
- **Sleep** Touch to set screen timeout.
- **Daydream** Touch to select from **Clock, Colours, Photo Frame** and **Photo Table**.
- **Font size** Touch to set the font size.
- **Pulse notification light** Mark the checkbox to show pulse notification light.

11.2.4 Status bar notifications

Touch the switch to open all notifications of 3rd-party applications to be shown on the top left of the status bar.

You can also touch some apps icons to deactivate their notifications in status bar.

11.2.5 Storage

Use these settings to monitor the total and available space on your phone and on your microSD card; to manage your microSD card.



If a warning message comes up saying that phone memory is limited, you are required to free up space by deleting some unwanted applications, downloaded files, etc.

11.2.6 Battery

In battery screen you can view the battery usage data since you last connected the phone to a power source. The screen also shows your battery status and how long it has been used since last charging. Touch one category, then you can learn its specific power consumption.

You can adjust power use via the screen brightness or screen timeout in Display screen.

11.2.7 Applications

You use the Applications settings to view details about the applications installed on your phone, to manage their data and force them to stop, and to set whether you want to permit installation of applications that you obtain from web sites and emails.

11.3 Personal

11.3.1 Location

Use your wireless network to pinpoint your location within an accuracy as close as several meters ("street level").

11.3.2 Security

Set up screen lock

- **None** Touch to disable screen unlock security.
- **Slide** Touch to enable slide unlock mode.
- **Voice Unlock** Touch to record voice to unlock screen.
- **Pattern** Touch to draw pattern to unlock screen.
- **PIN** Touch to enter a numeric PIN to unlock screen.
- **Password** Touch to enter a password to unlock screen.

Owner info

Touch to input owner information which will display on the lock screen.

Encrypt phone

You can encrypt your accounts, settings, download apps and their data, media and other files by touching Encrypt phone.

Set up SIM card lock

Choose a SIM card you want to configure.

Mark the checkbox of **Lock SIM card** to lock the SIM card with PIN code.

Touch **Change SIM PIN** to change the PIN code.

Make passwords visible

Mark the checkbox to show passwords as you type.

Device administrators

Touch to view or deactivate device administrators.

Unknown sources

Mark the checkbox to permit installation of applications that you obtain from web sites, emails, or other locations other than Android Market.

To protect your phone and personal data, download applications only from trusted sources, such as Android Market.

Verify apps

Mark the checkbox to disallow or warn before installing apps which may cause harm.

Storage type

Touch to display the storage type.

Trusted credentials

Touch to display trusted CA certificates.

Install from phone storage

Touch to install encrypted certificates from the phone storage.

Clear credentials

Touch to remove all credentials.

11.3.3 Language & input

Use the Language & input settings to select the language for the text on your phone and for configuring the onscreen keyboard. You can also configure voice input settings and the pointer speed.

Language

Touch to select the language and the region you want.


Spell checker

Mark the checkbox to enable the system to show suggested words.

Personal dictionary

Touch to open a list of the words you've added to the dictionary. Touch a word to edit or delete it. Touch the add button (+) to add a word.

Default

Touch to select a default input method. Touch the Settings icon  on the right of selected input method, a series of settings are available for your selection.

Google keyboard

The Google keyboard settings apply to the onscreen keyboard that is included with your phone. The correction and capitalisation features affect only the English version of the keyboard. Available options are as follows:

- **Input languages**

Touch to set input language.

- **Auto-capitalisation**

Mark the checkbox to have the onscreen keyboard automatically capitalise the first letter of the first word after a period, the first word in a text field, and each word in name fields.

- **Vibrate on keypress**

Mark the checkbox to have the phone vibrate briefly each time you touch a key on the onscreen keyboard.

- **Sound on keypress**

Mark the checkbox to play a brief sound each time you touch a key on the onscreen keyboard.

- **Popup on keypress**

Mark the checkbox to popup the key that you touched.

- **Voice input key**

Mark the checkbox to enable voice input.

- **Personal dictionary**

Touch to use personal dictionary.

- **Add-on dictionaries**

Touch to Install or Delete the language dictionaries.

- **Block offensive words**

Mark the checkbox to block the offensive words.

- **Auto correction**

Touch to turn on/off auto correction, or you can also adjust the sensitivity of correction.

- **Show correction suggestions**

Touch to show or not the correction suggestions while typing.

- **Personalised suggestions**

Mark the checkbox to popup word prediction.

- **Enable gesture typing**

Mark the checkbox to enable input a word by sliding through the letters.

- **Dynamic floating preview**

Mark the checkbox to see the suggested word while gesturing.

- **Show gesture trail**

Mark the checkbox to show gesture trail.

- **Phrase gesture**

Mark the checkbox to enable input spaces during gestures by sliding to the space key.

- **Next-word suggestions**

Mark the checkbox to use the previous word when making suggestions.

- **Advanced settings**


Touch to view more advanced settings for Google keyboard, such as **Key popup dismiss delay**, **Suggest Contact names**, etc.

Voice search

Touch to view settings about voice search, such as Language, Speech output, etc.

Text-to-speech output

- **Preferred engine**

Touch to choose a preferred text-to-speech engine, touch the Settings icon  to show more choices for each engine.

- **Speech rate**

Touch to open a dialogue where you can select how quickly you want the synthesiser to speak.

- **Listen to an example**

Touch to play a brief sample of the speech synthesiser, using your current settings.

Pointer speed

Touch to open a dialogue where you can change the pointer speed, touch **OK** to confirm.


11.3.4 Backup and reset

Data backup

This phone enables you to back up your phone's settings and other app data to Google Servers, using your Google Account.

If you replace your phone, the settings and data you've backed up can be restored onto the new phone the first time you sign in with your Google Account.


To activate this function:

- 1 Touch  on Quick setting bar to go to **Settings**.
- 2 Touch **Backup and reset > Back up my data**.
- 3 Mark the checkbox.

If you've turned on this function, a wide variety of settings and data are backed up, including your Wi-Fi passwords, bookmarks, a list of the apps you've installed, the words you've added to the dictionary used by the onscreen keyboard, and most of the settings that you configure with the Settings app. If you turn this option off, it will stop backing up your settings, and any existing backups are deleted from Google Servers.

Factory data reset

To activate a factory data reset:

- 1 Touch  on Quick setting bar to go to **Settings**.
- 2 Touch **Backup and reset > Factory data reset**.

- 3 Touch **Reset phone > Erase everything**.

Reset phone will erase all of your personal data from internal phone storage, including information about your Google Account, any other accounts, your system and app settings, and any downloaded apps. Resetting the phone does not erase any system updates you have downloaded. If you reset the phone in this way, you are prompted to re-enter the same kind of information as when you first started Android.

If you're unable to turn your phone on, there is another alternative to perform a factory data reset by pressing the **Volume up** key and the **Power** key at same time under power off mode until the screen lights up.

11.4 Accounts

Use the settings to add, remove, and manage your Email and other supported accounts. You can also use these settings to control how and whether all applications send, receive, and synchronise data on their own schedules, and whether all applications can synchronise user data automatically.

11.4.1 Add account

Touch to add an account for selected app.

11.5 System

11.5.1 Date & time

Use Date & Time settings to customise your preferences for how date and time are displayed.

Automatic date & time

Touch to select Use network provided time or Off.

Mark the checkbox to use network provided time.

Automatic time zone

Mark the checkbox to use network-provided time zone. Or unmark to set all values manually.

Set date

Touch to open a dialogue where you can manually set the phone's date.

Set time

Touch to open a dialogue where you can manually set the phone's time.

Select time zone

Touch to open a dialogue where you can set the phone's time zone.

Use 24-hour format

Mark the checkbox to display the time using 24-hour clock format.

Choose date format

Touch to open a dialogue where you can select the format for displaying dates.

11.5.2 Schedule power on/off

Touch to preset the power on/off time and repeat mode.

11.5.3 Accessibility

You use the Accessibility settings to configure any accessibility plug-ins you have installed on your phone.

TalkBack

Touch to turn on/off TalkBack.

Captions

Touch to turn on/off Captions.

Magnification gestures

Touch to turn on/off to activate/deactivate zoom in/out function by triple-tapping the screen.

Large text

Mark the checkbox to enlarge the screen text.

Power button ends call

Mark the checkbox to end a call by pressing **Power** key during the call.

Auto rotate screen

Mark the checkbox to rotate screen automatically.

Speak passwords

Mark the checkbox to speak passwords while typing.

Accessibility shortcut

Touch to turn on/off to enable/disable accessibility features.

Text-to-speech output

Touch to open Text-to-speech output options.

Touch & hold delay

Touch to adjust the duration of touch and hold delay. This function enables your phone to differ touch and touch & hold, which may avoid incorrect operations.

Quick boot

Mark the checkbox to enable quick boot.

11.5.4 Developer options

To access this function, touch **Settings > About phone**, then touch **Build number 7** times. Now **Developer options** is available.

The Development screen contains settings that are useful for developing Android applications. For full information, including documentation of the Android applications and development tools, see the Android developer web site (<http://developer.android.com>).

Take bug report

Touch to select to collect information about your current device state and send as an email message.

Desktop backup password

Touch to set/change/remove desktop full backup password.

Stay awake

Mark the checkbox to prevent the screen from dimming and locking when the phone is connected to a charger or to a USB device that provides power. Don't use this setting with a static image on the phone for long periods of time, or the screen may be marked with that image.

Select runtime

Touch to choose Use Dalvik or Use ART.

Enable Bluetooth HCI snoop log

Mark the checkbox to capture all bluetooth HCI packets in a file.

Process status

Touch to display the status about running processes.

USB debugging

Mark the checkbox to permit debugging tools on a computer to communicate with your phone via a USB connection.

Revoke USB debugging authorizations

Touch to revoke access to USB debugging from all computers you've previously authorized.

Power menu bug report

Mark the checkbox to select to include option in power menu for submitting a bug report.

Allow mock locations

Mark the checkbox to permit a development tool on a computer to control where the phone believes it is located, rather than using the phone's own internal tools for this purpose.

Select debug app

Touch to select debug app.

Wait for debugger

Mark the checkbox to wait for debugger to attach before executing.

Verify apps over USB

Mark the checkbox to check apps over USB.

Wireless Display certification

Mark the checkbox to show options for Wireless Display certification.

Show touches

Mark the checkbox to show visual feedback for touches.

Pointer location

Mark the checkbox to show current touch data.

Show screen updates

Mark the checkbox to show screen updates.

Show layout bounds

Mark the checkbox to show clip bounds, margins, etc.

Force RTL layout direction

Mark the checkbox to force screen layout direction to RTL for all locales.

Window animation scale

Touch to adjust the animation scale for your window.

Transition animation scale

Touch to adjust the animation scale while performing transition.

Animator duration scale

Touch to adjust the animator duration scale.

Simulate secondary displays

Touch to adjust the Simulate secondary displays.

Force GPU rendering

Mark the checkbox to use 2D hardware acceleration in applications.

Show GPU view updates

Mark the checkbox to show GPU view updates.

Show hardware layers updates

Mark the checkbox to show hardware layers updates.

Debug GPU overdraw

Mark the checkbox to show GPU overdraw.

Debug non-rectangular clip operations

Mark the checkbox to show non-rectangular clip operations.

Force 4x MSAA

Mark the checkbox to enable 4x MSAA.

Disable HW overlays

Mark the checkbox to select to always use GPU for screen compositing.

Strict mode enabled

Mark the checkbox to enable strict mode. After enabled, the screen will flash when applications do long operations on the main thread.

Show CPU usage

Mark the checkbox to show current CPU usage.

Profile GPU rendering

Mark the checkbox to use 2D hardware acceleration in applications.

Enable OpenGL traces

Touch to adjust OpenGL traces.

Don't keep activities

Mark the checkbox to remove all activities as soon as you leave.

Background process limit

Touch to change the limit for background processes.

Show all ANRs

Mark the checkbox to show "Application Not Responding" dialogue for background applications.

11.5.5 Regulatory & Safety

Touch to view Regulatory & Safety information, including Product model, Manufacturer name, etc.

11.5.6 About phone

This contains information about things ranging from Legal information, Model number, Android version, Baseband version, Kernel version, Build number, Custom build version to those listed below:

System updates

Touch to check for system updates.

System updates (storage)

Touch to check for system updates (storage).

Status




This contains the status of the Battery status, Battery level, My phone number, Network, Signal strength, etc.

Legal information


Touch to view legal information.

12 Update your phone's software

Using the FOTA (Firmware Over The Air) Upgrade tool you can update your phone's software.

To access **System updates**, open the Notification panel and touch  and then , then touch **About phone > System updates**. Or you can directly touch  and access **Settings > About phone > System updates**. Touch **Check for updates**, and the phone will search for the latest software. If you want to update the system, please touch **Download**, and when that's finished, touch **Install** to complete the upgrade. Now your phone will have the latest version of the software.

You should turn on data connection before searching for updates. Settings for auto-check intervals and reminders about upgrades are also available once you restart the phone.



















If you have chosen auto-check, when the system discovers the new version, the  will appear in the status bar. Touch the notification to access the **System updates** directly.



During FOTA downloading or updating, to avoid errors in locating the correct update packages, do not change your default storage location.

13 Product safety information

Pictograms and graphic symbols

-  Read the Safety Information section of this user guide on page 102
-  Do not use while re-fuelling
-  Do not use hand-held while driving
-  This device may produce a bright or flashing light
-  When using the phone, make sure it is kept at least 10 mm away from your head or body
-  Do not dispose of in a fire
-  Small parts may cause a choking hazard
-  Avoid contact with magnetic media
-  This device may produce a loud sound
-  Avoid extreme temperatures
-  Keep away from pacemakers and other personal medical devices
-  Avoid contact with liquid, keep dry
-  Switch off when instructed in hospitals and medical facilities
-  Do not try to disassemble
-  Switch off when instructed in aircraft and airports
-  Do not rely on this device for emergency communications
-  Switch off in explosive environments
-  Only use approved accessories

Product safety information

RF exposure

General statement on RF energy

Your phone contains a transmitter and a receiver. When it is ON, it receives and transmits RF energy. When you communicate with your phone, the system handling your call controls the power level at which your phone transmits.

Specific Absorption Rate (SAR)

Your mobile device is a radio transmitter and receiver. It is designed not to exceed the limits for exposure to radio waves recommended by international guidelines. These guidelines were developed by the independent scientific organisation ICNIRP and include safety margins designed to ensure the protection of all persons, regardless of age and health.

The guidelines use a unit of measurement known as the Specific Absorption Rate, or SAR. The SAR limit for mobile devices is 2 W/kg and the highest SAR value for this device when tested at the ear was 0.932 W/kg⁽¹⁾. As mobile devices offer a range of functions, they can be used in other positions, such as on the body as described in this user guide.

As SAR is measured utilising the device's highest transmitting power, the actual SAR of this device while operating is typically below that indicated above. This is due to automatic changes to the power level of the device to ensure it only uses the minimum power required to communicate with the network.

Body worn operation

Important safety information regarding radiofrequency radiation (RF) exposure.

To ensure compliance with RF exposure guidelines the phone must be used with a minimum of 10 mm separation from the body.

Failure to observe these instructions could result in your RF exposure exceeding the relevant guideline limits.

"The highest SAR value for this mobile phone when tested for use at the body and compliance against the standard is 1.01 W/kg. While there may be differences between the SAR levels on various phones and at various positions, they all meet the relevant International guidelines and EU requirements for RF (radio-waves) exposure".

⁽¹⁾ The tests are carried out in accordance with IEC standard PT62209-1.

Limiting exposure to radio frequency (RF) fields

For individuals concerned about limiting their exposure to RF fields, the World Health Organisation (WHO) provides the following advice:

Precautionary measures: present scientific information does not indicate the need for any special precautions for the use of mobile phones. If individuals are concerned, they might choose to limit their own or their children's RF exposure by limiting the length of calls, or using 'hands-free' devices to keep mobile phones away from the head and body.

Further information on this subject can be obtained from the WHO home page <http://www.who.int/peh-emf> WHO Fact sheet 193: June 2000.

Regulatory information

The following approvals and notices apply in specific regions as noted.

TCT Mobile

TCT Mobile Europe SAS
55 Avenue des Champs Pliereux,
Immeuble Le Capitole 92000 Nanterre, France
+33 1 46 22 61 00

EC declaration of conformity / Déclaration de conformité CE

Product / Produit : HSDPA+HSPA/LMDS dual bands / GSM dual bands handheld station with Bluetooth technology, W/FI, FM radio / HSDPA+HSPA/LMDS bisbande / GSM bisbande avec technologie Bluetooth, W/fi, radio FM

Product Identification / Identification du produit : VF885 type Soul 3.5 VF

We / Nous : TCT Mobile Europe SAS
55, avenue des Champs Pliereux
92000 Nanterre
France

Declare under our sole responsibility that the product above mentioned is conform to the applicable essential requirements of the directive 1999/5/CE and that all essential radio test suites have been carried out. Conformity assessment procedure : annex IV of the directive. / Déclarons sous notre entière responsabilité que le produit ci-dessus est en conformité avec ses exigences essentielles applicables de la directive 1999/5/CE et que toutes les séries d'essais radio essentielles ont été effectuées. Procédure d'évaluation de conformité : annexe IV de la directive.

Applied standards / Normes appliquées :

- Item 3.1.a (protection of the health and of the safety of the user) / Article 3.1.a (protection de la santé et de la sécurité de l'utilisateur)
 - EN 50500 : 2009 + A11:2009 + A1:2010 + A12:2011
 - EN 50 300 : 2001/IA1:2012, EN 50 566 : 2013, EN 62479 : 2010.
- Item 3.1.b (protection requirements with respect to electromagnetic compatibility) / Article 3.1.b (exigences de protection en ce qui concerne la compatibilité électromagnétique)
 - EN 301 489-1 v.1.9.2 (2011-09), EN 301 489-7 v.1.3.1 (2005 - 11), EN 301 488-17 v.2.2.1 (2012-09), EN 301 489-24 v1.5.1 (2010-10), EN 55013:2001 + A1:2003 + A2:2006, EN 55022:2007/A11:2011
- Item 3.2 (effective use of spectrum so as to avoid harmful interferences) / Article 3.2 (utilisation efficace du spectre radioélectrique de façon à éviter les interférences dommageables)
 - EN 301 511 v.9.0.2 (2003-03), EN 301 908-1 v.5.2.1 (2011-05), EN 301 908-2 v.5.2.1 (2011-07), EN 300 328 v.1.8.1 (2012-06)

This product also conforms to the applicable requirements of following directives, / Ce produit est en conformité avec la directive,

- directive 2011/65/EU (RoHS - restriction of the use of certain hazardous substances)

This product can connect with a Common Mobile Phone Charger which complies with below standards: (Ce produit peut être utilisé avec un chargeur universel pour téléphones portables conformes aux standards suivants)

- EN 301 489.34 v1.3.1 (2010-10)
- EN 62684:2010

The chargers delivered with this product also conform to the applicable requirements of the directive 2009/125/EC(Energy Related Products) / Les chargeurs livrés avec ce produit est en conformité avec la directive 2009/125/EC(écoconception des produits)

Conformity of this product with the essential requirements of the R&TE Directive 1999/5/CE has been reviewed by the following Notified Body. / La conformité de ce produit a été vérifiée par l'organisme de certification (notified body) suivant,

American Certification Body, Inc.
Suite C110, Whittier Avenue 6731, 22101 McLean, Virginia, United States
Identification number: 1588

Date 2014-06-16
Signature

Christophe BENOIT
TCT Mobile Europe SAS / Deputy General Manager, EMEA/ANCE
Immeuble Le Capitole
55 Avenue des Champs Pliereux
92000 Nanterre cedex 22

CE 1588

TCT Mobile Europe SAS - Siège social : 55 Avenue des Champs Pliereux, Immeuble Le Capitole 92000 Nanterre France
SAS au capital de 23 031 072 euros - RCS Nanterre B 440 039 222 - Siret 440 039 222 009 38 APE 4602Z

Distraction

Driving

Full attention must be given to driving at all times in order to reduce the risk of an accident. Using a phone while driving (even with a hands free kit) causes distraction and can lead to an accident. You must comply with local laws and regulations restricting the use of wireless devices while driving.

Operating machinery

Full attention must be given to operating machinery in order to reduce the risk of an accident.

Product handling

General statement on handling and use

You alone are responsible for how you use your phone and any consequences of its use.

You must always switch off your phone wherever the use of a phone is prohibited. Use of your phone is subject to safety measures designed to protect users and their environment.

- Always treat your phone and its accessories with care and keep it in a clean and dust-free place.
- Do not expose your phone or its accessories to open flames or lit tobacco products.
- Do not expose your phone or its accessories to liquid, moisture or high humidity.
- Do not drop, throw or try to bend your phone or its accessories.
- Do not use harsh chemicals, cleaning solvents, or aerosols to clean the device or its accessories.
- Do not paint your phone or its accessories.
- Do not attempt to disassemble your phone or its accessories, only authorised personnel must do so.
- Do not expose your phone or its accessories to extreme temperatures, minimum -10 and maximum +50 degrees Celsius.
- Please check local regulations for disposal of electronic products.

Do not carry your phone in your back pocket as it could break when you sit down.

Small children

Do not leave your phone and its accessories within the reach of small children or allow them to play with it.

They could hurt themselves or others, or could accidentally damage the phone.

Your phone contains small parts with sharp edges that may cause an injury or which could become detached and create a choking hazard.

Demagnetisation

To avoid the risk of demagnetisation, do not allow electronic devices or magnetic media close to your phone for a prolonged time.

Electrostatic discharge (ESD)

Do not touch the SIM card's metal connectors.

Antenna

Do not touch the antenna unnecessarily.

Normal use position

When placing or receiving a phone call, hold your phone to your ear, with the bottom towards your mouth or as you would a fixed line phone.



Air bags

Do not place a phone in the area over an air bag or in the air bag deployment area.

Store the phone safely before driving your vehicle.

Seizures/Blackouts

This phone is capable of producing bright flashing lights.

Repetitive motion injuries

To minimise the risk of RSI, when texting or playing games with your phone:

- Do not grip the phone too tightly.
- Press the buttons lightly.
- Make use of the special features in the handset which minimise the number of buttons which have to be pressed, such as message templates and predictive text.
- Take lots of breaks to stretch and relax.

Emergency calls

This phone, like any wireless phone, operates using radio signals, which cannot guarantee connection in all conditions. Therefore, you must never rely solely on any wireless phone for emergency communications.

Loud noise

This phone is capable of producing loud noises which may damage your hearing. Prolonged exposure to music at full volume on the music player may damage the listener's hearing. Use the recommended headphones only.



PROTECT YOUR HEARING

To prevent possible hearing damage, do not listen at high volume levels for long periods. Exercise caution when holding your device near your ear while the loudspeaker is in use.

Bright light

This phone is capable of producing flashes of light, do not use it too close to the eyes.

Phone heating

Your phone may become warm during charging and during normal use.

Electrical safety

Accessories

Use only approved accessories.

Do not connect with incompatible products or accessories.

Take care not to touch or allow metal objects, such as coins or key rings, to contact or short-circuit the battery terminals.

Connection to a car

Seek professional advice when connecting a phone interface to the vehicle's electrical system.

Faulty and damaged products

Do not attempt to disassemble the phone or its accessories.

Only qualified personnel must service or repair the phone or its accessories.

If your phone or its accessories have been submerged in water, punctured, or subjected to a severe fall, do not use them until you have taken it to be checked at an authorised service centre.

Battery handling & safety

Always switch the device off and disconnect the charger before removing the battery.

Only use the battery and charger supplied, or manufacturer approved replacements intended for use with your phone. Using other batteries and chargers could be dangerous.

Do not disassemble or short-circuit the battery. Accidental short-circuiting can occur if a metallic object such as a key, paper clip, or pen touches the terminals of the battery. Improper battery use may result in a fire, explosion, or other hazard. If you believe the battery has been damaged, do not use it, take it to a service centre for testing.

Interference

General statement on interference

Care must be taken when using the phone in close proximity to personal medical devices, such as pacemakers and hearing aids.

Pacemakers

Pacemaker manufacturers recommend that a minimum separation of 15 cm be maintained between a mobile phone and a pacemaker to avoid potential interference with the pacemaker. To achieve this use the phone on the opposite ear to your pacemaker and do not carry it in a breast pocket.

Hearing aids

People with hearing aids or other cochlear implants may experience interference noises when using wireless devices or when one is nearby. The level of interference will depend on the type of hearing device and the distance from the interference source, increasing the separation between them may reduce the interference. You may also consult your hearing aid manufacturer to discuss alternatives.

Medical devices

Please consult your doctor and the device manufacturer to determine if operation of your phone may interfere with the operation of your medical device.

Hospitals

Switch off your wireless device when requested to do so in hospitals, clinics or health care facilities. These requests are designed to prevent possible interference with sensitive medical equipment.

Aircraft

Switch off your wireless device whenever you are instructed to do so by airport or airline staff.

Consult the airline staff about the use of wireless devices on board the aircraft, if your device offers a 'flight mode' this must be enabled prior to boarding an aircraft.

Interference in cars

Please note that because of possible interference to electronic equipment, some vehicle manufacturers forbid the use of mobile phones in their vehicles unless a handsfree kit with an external antenna is included in the installation.

Explosive environments

Petrol stations and explosive atmospheres

In locations with potentially explosive atmospheres, obey all posted signs to turn off wireless devices such as your phone or other radio equipment.

Areas with potentially explosive atmospheres include fuelling areas, below decks on boats, fuel or chemical transfer or storage facilities, areas where the air contains chemicals or particles, such as grain, dust, or metal powders.

Blasting caps and areas

Turn off your mobile phone or wireless device when in a blasting area or in areas posted with notifications requesting "two-way radios" or "electronic devices" are turned off to avoid interfering with blasting operations.

Your telephone is a transceiver that operates on GSM in dual-band (900/1800 MHz) or UMTS in dual-band (900/2100 MHz).

CE 1588

This equipment is in compliance with the essential requirements and other relevant provisions of Directive 1999/5/EC. The entire copy of the Declaration of Conformity for your telephone can be obtained through our website: vodafone.com/devices/smart4fun.

Protection against theft⁽¹⁾

Your telephone is identified by an IMEI (phone serial number) shown on the packaging label and in the product's memory. We recommend that you note the number the first time you use your telephone by entering *#06# and keep it in a safe place. It may be requested by the police or your operator if your telephone is stolen. This number allows your mobile telephone to be blocked preventing a third person from using it, even with a different SIM card.



This symbol on your telephone, the battery and the accessories means that these products must be taken to collection points at the end of their life:

- Municipal waste disposal centres with specific bins for these items of equipment.
- Collection bins at points of sale.

They will then be recycled, preventing substances being disposed of in the environment, so that their components can be reused.

In European Union countries:

These collection points are accessible free of charge.

All products with this sign must be brought to these collection points.

In non-European Union jurisdictions:

Items of equipment with this symbol are not to be thrown into ordinary bins if your jurisdiction or your region has suitable recycling and collection facilities; instead they are to be taken to collection points for them to be recycled.

CAUTION: RISK OF EXPLOSION IF BATTERY IS REPLACED BY AN INCORRECT TYPE. DISPOSE OF USED BATTERIES ACCORDING TO THE INSTRUCTIONS.

⁽¹⁾ Contact your network operator for service availability.

14 Telephone warranty

WARRANTY TERMS AND CONDITIONS

1. Vodafone undertakes the warranty of this Mobile Phone for a period of two (2) years from the date of Purchase by the original owner (not transferable) under normal use.
2. The Battery has a limited warranty for twelve (12) months, and Charger for twenty-four (24) months against manufacturing defects. Other accessories have a limited warranty for twenty-four (24) months against manufacturing defects.
3. This Warranty does not cover damage resulting from:
 - a) Normal wear & tear of the equipment;
 - b) Defects and damages due to the equipment being used other than its normal and customary manner;
 - c) An unauthorised disassembly, repair, alteration or modification being carried out;
 - d) Misuse, abuse, negligence or accident howsoever caused;
 - e) Defects or damage arising from improper testing, operation, maintenance, installation, or any alteration or modification;
 - f) Defects or damage due to spillage of food or liquids, corrosion, rust or the use of wrong voltage;
 - g) Scratches or damage to plastic surfaces and all other externally exposed parts that are due to normal customer use;
4. The phone needing service/repair must be delivered at the user's cost.

5. This warranty will be null and void in any of the following events:
 - a) If the serial number or warranty seal on the equipment has been defaced or removed.
 - b) If any term contained in this warranty has been altered or modified in any way without prior written consent of Vodafone.
6. The limited warranty extends only to customer who purchase the product in one of the countries (or areas) set forth at the end of this document. The limited warranty is only valid in Vodafone's intended country (or area) of sale of the Product.
7. If the product is returned to Vodafone after the expiration of the warranty period, Vodafone's normal service policies shall apply and the Consumer will be charged accordingly.
 - a) Vodafone neither assumes for it any other obligation or liability beyond that which is expressly provided for in this limited warranty.
 - b) All warranty information, product features and specifications are subject to change without notice.
8. THIS WARRANTY IS IN LIEU OF ANY AND OTHER WARRANTIES EXPRESSED OR IMPLIED, SPECIFICALLY INCLUDING ANY IMPLIED WARRANTY OF MERCHANTABILITY OR FITNESS FOR A PARTICULAR PURPOSE. VODAFONE ASSUMES NO LIABILITY FOR THE BREACH OF THE WARRANTY BEYOND CORRECTING THE BREACH IN THE MANNER DESCRIBED ABOVE. IN NO EVENT SHALL VODAFONE BE LIABLE FOR CONSEQUENCES.

15 Accessories

The latest generation of Vodafone GSM mobile phones offers a built-in handsfree feature that allows you to use the telephone from a distance, placed on a table for example. For those who prefer to keep their conversations confidential, an earpiece is also available known as the headset.

1. Charger
2. Battery
3. Rock headset



Only use your telephone with the batteries, chargers and accessories in your box.

16 Specifications

Processor	MT6572M
Platform	Android™ 4.4
Memory	ROM: 4 GB RAM: 512 MB
Dimensions (LxWxT)	112.2 x 62 x 11.95 mm
Weight	Around 100 grams with battery
Display	3.5-inch TFT-LED touchscreen with 480 x 320 HVGA Capacity resolution
Network	GSM: Dual band 900/1800 MHz UMTS: Dual band 900/2100 MHz (Band frequency and data speed are operator dependent.)
Connectivity	Bluetooth V4.0/A2DP, AVRCP, OPP, PAN, PBAP, SPP Wi-Fi IEEE 802.11 b/g/n 3.5 mm audio jack Micro-USB
Camera	2.0 megapixel embedded camera
Audio supported formats	AMR-NB, AMR-WB, AAC, MP3, MIDI, Vorbis, APE, FLAC, G711, RAW
Video supported formats	H.263, MPEG4, H.264, AVC, VP80, DIVX, MJPEG

Battery ⁽¹⁾	Rechargeable Lithium battery Capacity: 1400 mAh
Expansion Slot	microSD™ memory card (Availability of microSD card depends on market)
Special Features	G-sensor

Note: Specifications are subject to change without prior notice.

⁽¹⁾ The original battery has undergone rigorous safety inspections to meet qualification standards, the use of non-original batteries may be dangerous.