

## B2 Power Wireless Headphones



### USERS GUIDE

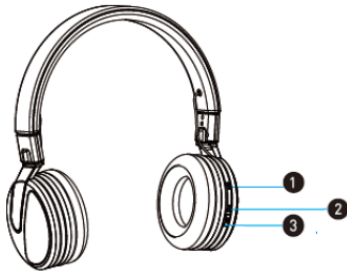
## PACKAGE CONTENTS



- B2 Power Wireless Headphone
- Audio Cable
- Micro USB Charging Cable
- Users Guide

2

## HEADPHONE BUTTON



1. "+" Next Song/Volume Increasing
2. "-" Previous Song/Volume Decreasing
3. "o" Multi-Function Button
  - Power On /Off
  - Pairing
  - Call Functionalities-Answer/End/Redial/Reject Call
  - Music Functionalities-Play/Pause

3

## HEADPHONE CONTROL

### Power ON/OFF

Hold down "o" to turn the device ON/OFF

### Volume Control/Change songs

Hold down "+" button to increase the volume, quickly press

"+" button to skip to the next song

Hold down "-" button to decrease the volume, quickly press

"-" button to skip to the previous song

### Phone Calls

To answer a call, quickly press "o" button

To end a call, quickly press "o" button

To redial the last number, quickly press "o" twice.

### Charging

To charge B2 Power Wireless Headphone, connect USB charging cable into a wall adaptor.

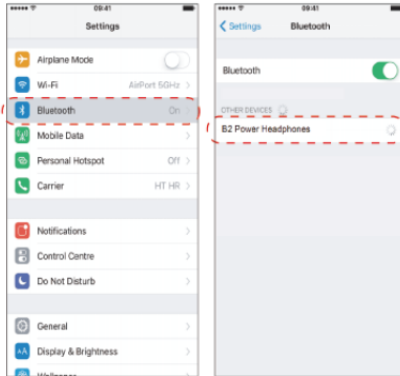
While charging, LED is red.

When it is full charge the light will turn off.

4

## BLUETOOTH CONNECTION

1. When turning on, hold "o" button until the blue and red light flashes
2. On your bluetooth enabled mobile devices, select "B2 Power Headphone" in your list of bluetooth devices



5

## SPECIFICATION

Wireless Standard: V4.1  
Support Profiles: A2DP, AVRCP, HFP  
Output power: 10mw/32  
Range: Up to 10m (33ft.)  
Battery volume: 3.7V 400mA li-ion battery  
Charge time: approx. 2 hours  
Playtime: More than 6 hours

6

## FCC STATEMENT

This device complies with Part 15 of the FCC rules. Operation is subject to the following two conditions:

- 1) this device may not cause harmful interference,
- 2) this device must accept any interference received, including interference that may cause undesired operation.

Note:

This equipment has been tested and found to comply with the limits for a Class B digital device, pursuant to part 15 of the FCC Rules.

These limits are designed to provide reasonable protection against harmful interference in a residential installation. This equipment generates uses and can radiate radiofrequency energy and, if not installed and used in accordance with the instructions, may cause harmful interference to radio communications.

However, there is no guarantee that interference will not occur in a particular installation. If this equipment does not cause harmful interference to radio or television reception, which can be determined by turning the equipment off and on, the user is encouraged to try to correct the interference by one or more of the following measures:

7

- Reorient or relocate the receiving antenna.
- Increase the separation between the equipment and receiver.
- Connect the equipment into an outlet on a circuit different from that to which the receiver is connected
- Consult the dealer or an experienced radio/TV technician for help.

Changes or modifications not expressly approved by the party responsible for compliance could void the user's authority to operate the equipment.

This device is measured RF output power is less than the SAR exclusion threshold value for human head and body. Therefore, SAR test is not necessary.

8